



Altronic[®]

**ALTRONIC CPU-85
IGNITION SYSTEM**

PART NO. 100-000000 SN 100000

DO NOT REMOVE LABEL

NEVER INSTALL FOR FORM CRUISE
NEVER REPROGRAM CRUISE

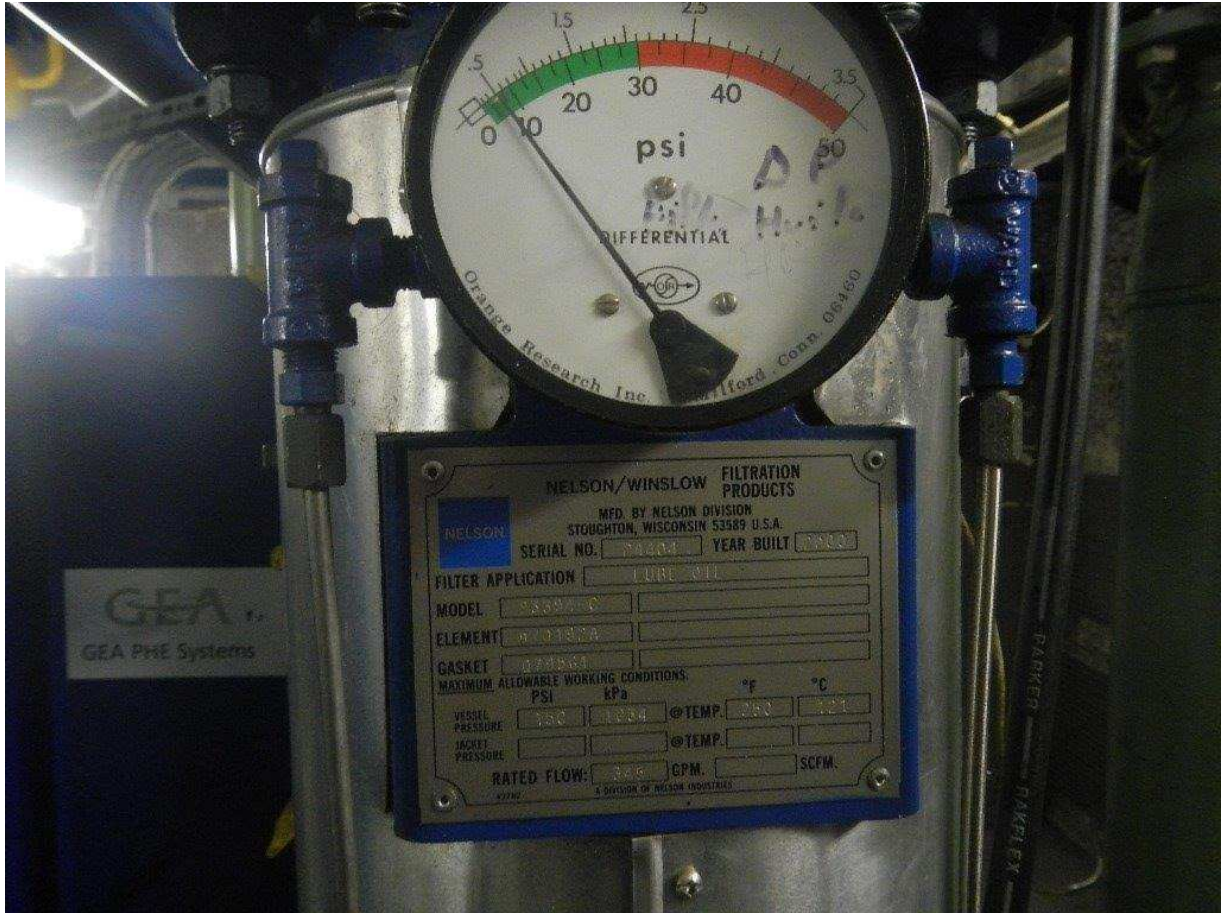


WARNING - KEEP ELECTRICAL
WIRE CONTACT AREA LUBR.
EXCESSIVE OIL MAY CAUSE
FAILURE TO START

CLASS - GROUP 9, 10, 11, 12, 13, 14

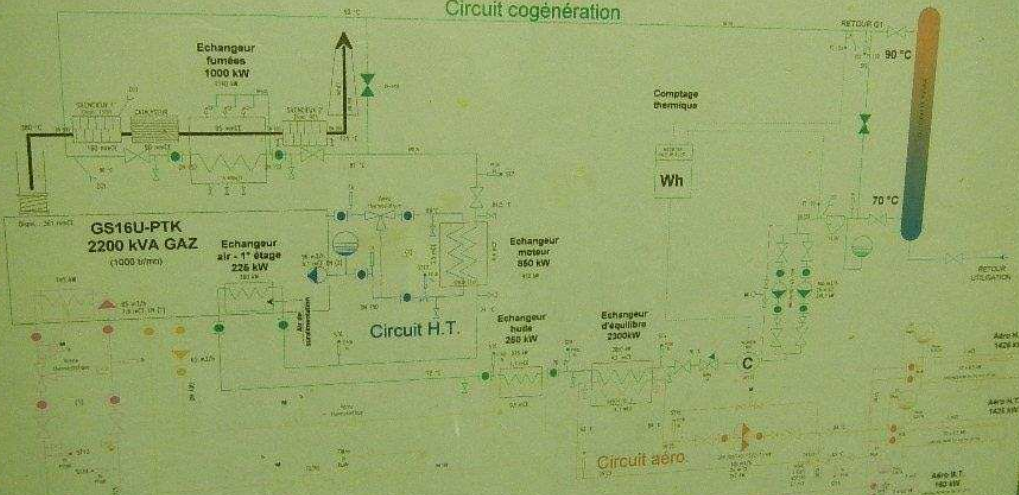
ALTRONIC, INC. - YOUNGSTOWN, OHIO





PUISANCE THERMIQUE TOTALE : 2325 kW

Circuit cogénération



CIRCUIT HYDRAULIQUE
Centrale de cogénération
C.H.I. de POISSY - St GERMAIN
Dess: CG Appr.: GL
Ech.: Date: 02/03/00
N° PLAN: 100SGM10_C







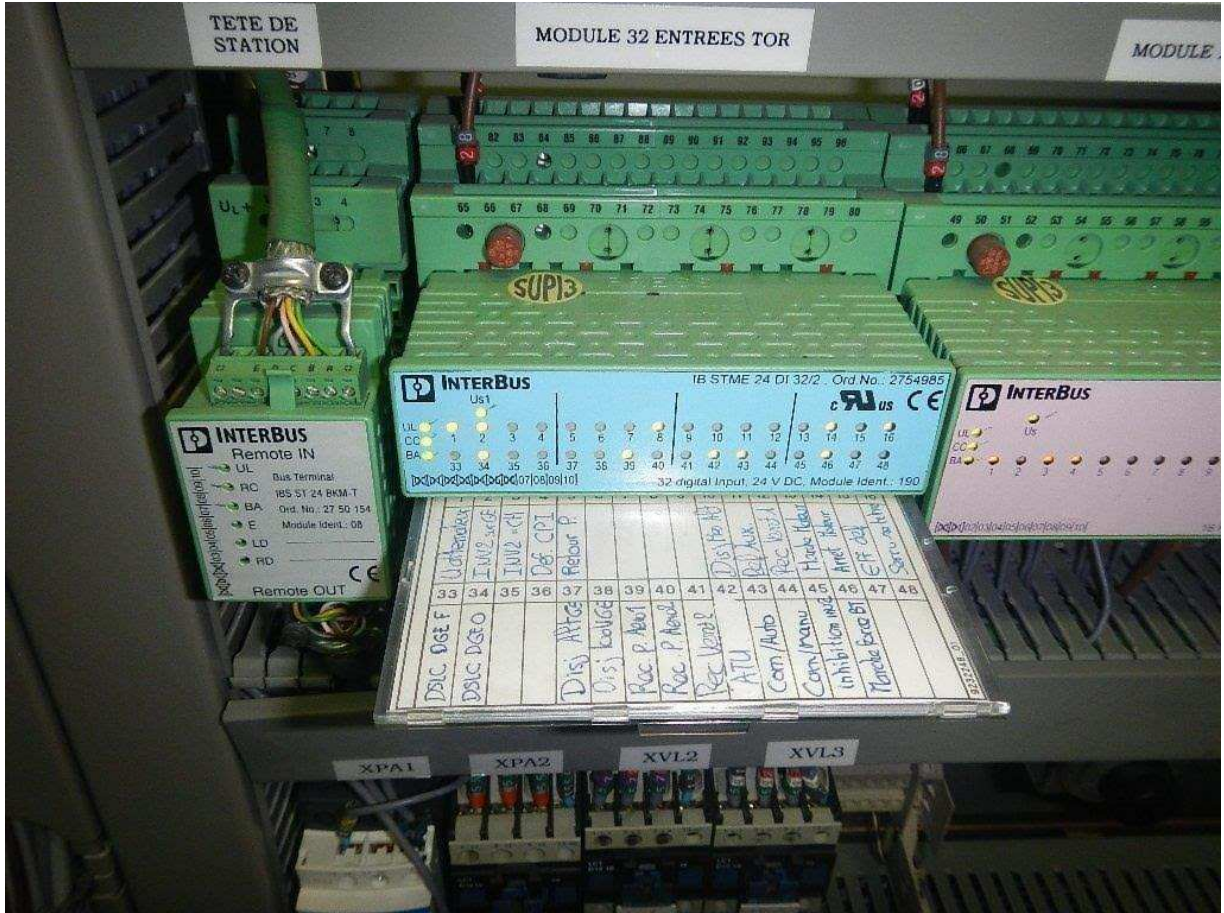






Date	Time	How	Observations	Actions	Date	Time	How	Observations	Actions	Date
2/21/13	09:55	5500	Adult dead of 100	Release cage	2/21/2013	09:55	6381	Appointer vacuumed exp. side of aluminum chamber	Adult cage 30 - de-25 H.E.P.E. 2600	14:2
22/02/13		6561	Δ filica - 0.5	Release cage + netpage	14/02/2013	8:10	6384	Rid of animal down from aluminum chamber	Adult cage 2 6" 35	14:20
28/02/13	10:53	6356	Release Knack 3/4 10	Release - at house in enclosure 36 Knack 1 9:50	FRN	15/03/2013	6390	Δ filica - 0.5 b.	Release cage 2 7:15	14:20
1/3/13	8:00	6350	Release Knack 10 3/4	Release cage 3:00	FRN		6390	Release of IMON	Release cage + netpage + side of enclosure (release)	14:20
02/03/2013	2:30	6345	not a dead mouse - 20 86/12 stuck covered with 7500	6345 mouse had to be pegged to 5 separate goal	FRN	16/03/2013	6392	Knack of RST	Release cage	14:20
02/03/2013		6344	Δ filica - 0.5 b	Release cage + netpage	17/03/2013	07:30 AM	6392	Knack of 10 7/8	Release cage	14:20
02/03/2013	08:15	6357	Introduce HEEP	Chy. Knack 3/4 Release 9:30	HEEP ED	18/03/13	6604	Δ filica - 0.5	Release cage + netpage	14:20
02/03/13		6361	Δ filica - 0.5 b	Release cage + netpage	18/03/13		6606	Δ filica - 0.5	Release cage + netpage	14:20
02/11/13	8:00	6360	compare with E.S.G.S. FRN	Release cage 8:10	FRN					
1/13		6320	Sorte pore capers Brit Sur BT chamber VERITAC	net cage 30 - 2 13/4	FRN					
1/13		6321	Adult cage on Gilou	Release cage 2 6" 35	FRN					
1/13		6322	Release cage + netpage + control of mic change	Appointer vacuumed exp. Rupture pneumatic chamber	FRN					
1/13		6323	Release Knack New BT	Appointer Glade & bidors	FRN					
1/13		6323	Δ filica - 0.5 b	Release cage + netpage	FRN					



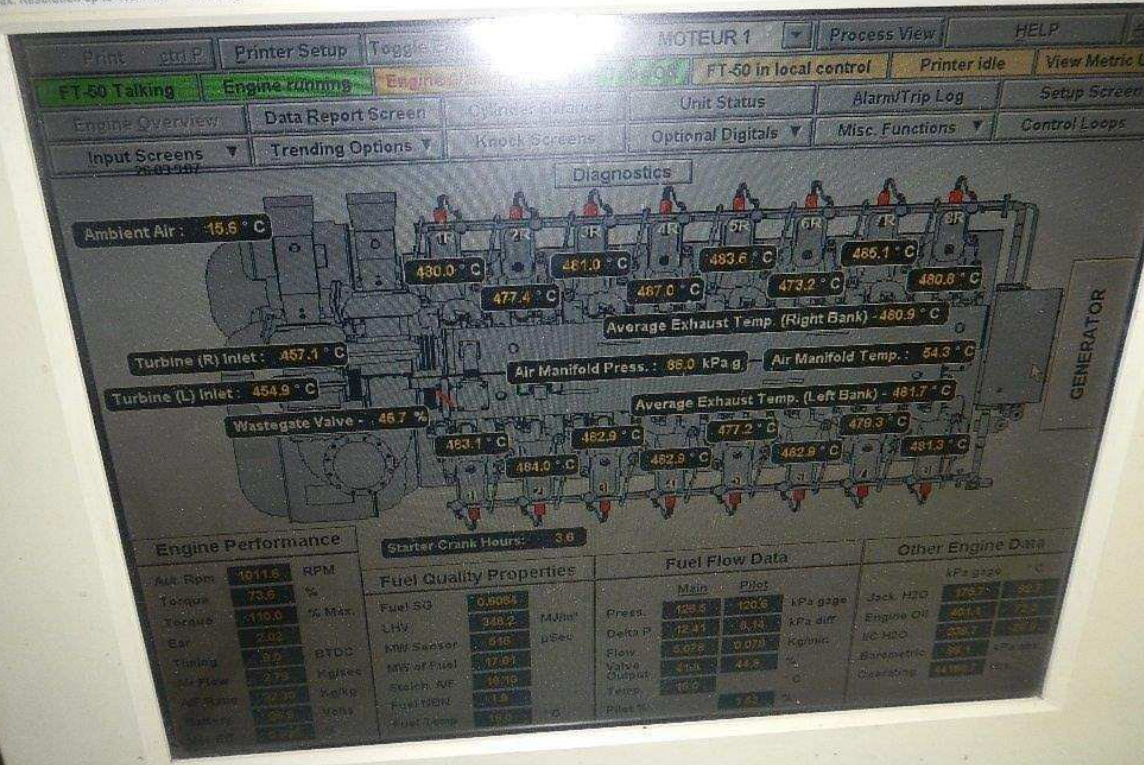








- 36cm (14.1") TFT LCD Monitor
- Three Button operated OSD
- Max. Resolution up to 1024x768
- Analog Interface
- Windows® 95/98/...



hyama

Hopital St Germain en Laye

RELEVÉ COGE

MITSUBISHI GS16U-PTK

DECI

Date 01-mars 05-mars 08-mars 12-mars 15-mars 19-mars 22-mars 26-mars 29-mars

H de Marche	12667	13665	14713	15859	16965	18044	19106	20166
Couple mot. Toeq	7.6	7.5	7.6	7.6	7.7	7.7	7.7	7.6
P. Av filtre	7.8	7.7	7.6	7.6	7.5	7.4	7.4	7.4
P. Ap filtre	6.5	6.4	6.2	6.2	6.2	6.1	6.1	6.1
T° ent ech HT	65	64	66	66	66	65	65	64
T° sort ech HT	80.3	81	84	85.3	85.5	85.3	85.3	84.9
P. aéro HT pomp	0.6	0.6	0.6	0.6	0.6	0.6	0.6	0.5
pmp HT en serv	0	0	0	0	0	0	0	0
T° ent aéro BT	44.6	44.1	44	43.8	43.8	43.8	43.8	43.8
T° dep aéro BT	53.1	51.7	51.7	51.6	51.6	51.6	51.6	51.6
niveau vase HT/HT	OK	OK	OK	OK	OK	OK	OK	OK
elta P filtre Ho	0.1	0.1	0.1	0.1	0.1	0.1	0.1	0.1
elta P vap Hu 1								
elta P vap Hu 2								

e huile Neuve	750	750	750	750	750	750	750	650
e huile Usagée	50	50	50	50	50	50	50	50
e condensats	OK	OK	OK	OK	OK	OK	OK	OK
D/dét	54/16	54/19	70/12	55/16	58/16	57/16	57/16	56/16
au huile mot	Bin	Bin	OK	Bin	Bin	Bin	Bin	Bin
az	3.3	3.3	3.2	3.1	3.1	3.2	3.2	3.1
	46.4	46.6	45.4	46.1	46.6	45.5	45.5	45.5
	48.3	48.3	48.0	48.3	48	48.2	48	48
	48.1	48.1	46.3	47.1	47.5	48.2	48.4	48.4
2/3	40.5	40.3	39.8	39.6	39.6	39.7	39.6	39.6
	1.51	1.48	1.49	1.49	1.69	1.69	1.69	1.69
AR	0.67	0.63	0.65	0.62	0.63	0.63	0.63	0.63
A	1.64	1.61	1.63	1.63	1.66	1.67	1.63	1.63
L -0.92	0.91	0.90	0.91	0.91	0.89	0.91	0.91	0.91
	80	89.3	49.9	49.9	60	60	69.9	69.9
gaz cor.	8110832	819066	827600	835328	843025	850713	858400	866088
gaz brute	813252	819066	825880	832696	839512	846328	853144	860000
Elec auxiliaire	575604	576798	577992	579186	580380	581574	582768	583962
Puis. Instant Mw	2.02	1.98	1.99	2.06	2.01	2.08	2.15	2.15
Calories Mwh	8444	84625	84796	84969	85142	85315	85488	85661

Date	43556	déf Knoutis LB 3/4	402.403	226.50	1h
2/02/13	43562	déf Knoutis LB 3/4	de 2h00	3h00	1h
5/03/13	43680	Annat suite 2550	6.6	de 8h30	0.30
7/03/13	43715	Annat suite pose capteurs	Boit de 13h00	13h00	0.30
8/03/13	43732	=	=	de 6h00 à 6h35	0.35

Total MOIS Ar. : 00:00

Hopital St Germain en Laye

RELEVÉ COGE

MITSUBISHI GS16U-PTK

DECI

Date 01-mars 05-mars 08-mars 12-mars 15-mars 19-mars 22-mars 26-mars 29-mars

H de Marche	12667	13665	14713	15859	16965	18044	19096	
Couple mot. Toeq	7.6	7.7	7.6	7.6	7.5	7.4	7.6	
P. Av filtre	6.5	6.4	6.2	6.2	6.2	6.1	6.1	
P. Ap filtre	6.5	6.4	6.2	6.2	6.2	6.1	6.1	
T° ent ech HT	80.3	81	81	81.6	82.3	82.6	82.9	
T° sort ech HT	0.6	0.6	0.6	0.6	0.6	0.6	0.6	
P. aéro HT pomp	0	0	0	0	0	0	0	
pmp HT en serv	4.6	4.6	4.6	4.6	4.6	4.6	4.6	
T° ent aéro BT	53.1	53.7	54.2	54.6	54.9	55.1	55.4	
T° dep aéro BT	OK	OK	OK	OK	OK	OK	OK	
niveau vase HT/HT	OK	OK	OK	OK	OK	OK	OK	
elta P filtre Ho	0.1	0.1	0.1	0.1	0.1	0.1	0.1	
elta P vap Hu 1								
elta P vap Hu 2								

e huile Neuve	750	750	750	750	750	750	750	
e huile Usagée	50	50	50	50	50	50	50	
e condensats	OK	OK	OK	OK	OK	OK	OK	
D/dét	54/16	54/19	70/12	55/10	58/16	57/10	56/16	
au huile mot	Bin	Bin	OK	Bin	Bin	Bin	Bin	
az	3.3	3.3	3.2	3.1	3.1	3.2	3.1	
	46.4	46.6	46.4	46.4	46.6	46.5	46.8	
	48.2	48.3	48.0	48.3	48	48.2	48	
	48.1	48.1	48.3	48.1	48.1	48.2	48.4	
2/3	60.5	60.3	60.8	60.6	60.6	60.7	60.6	
	1.57	1.68	1.49	1.63	1.69	1.69	1.69	
AR	0.67	0.63	0.66	0.67	0.63	0.63	0.69	
A	1.64	1.61	1.63	1.63	1.66	1.67	1.63	
L -0.92	0.91	0.92	0.91	0.91	0.89	0.91	0.92	
	80	89.3	49.9	49.9	60	60	49.9	
gaz cor.	8110832	819066	827600	836330	845325	854115	863029	
gaz brute	813252	819066	827600	836330	845325	854115	863029	
Elec auxiliaire	576604	576793	577100	577640	577947	578365	578660	
Puis. Instant Mw	2.02	1.98	1.99	2.06	2.01	2.08	1.5	
Calories Mwh	8444	84625	84726	84819	84912	85018	85114	

Date	43556	déf Knovets LB 3/4	de 2h30 à 2h30	2h
2/02/13	43562	déf Knovets LB 3/4	de 2h30 à 2h30	2h
5/03/13	43680	Annat suite 6550 G6	de 2h30 à 2h30	0,30
7/03/13	43715	Annat suite pose capteurs	de 2h30 à 2h30	0,30
8/03/13	43732	" " " " "	de 2h30 à 2h30	0,35

Total MOIS Ar : 00:00









