



CATERPILLAR

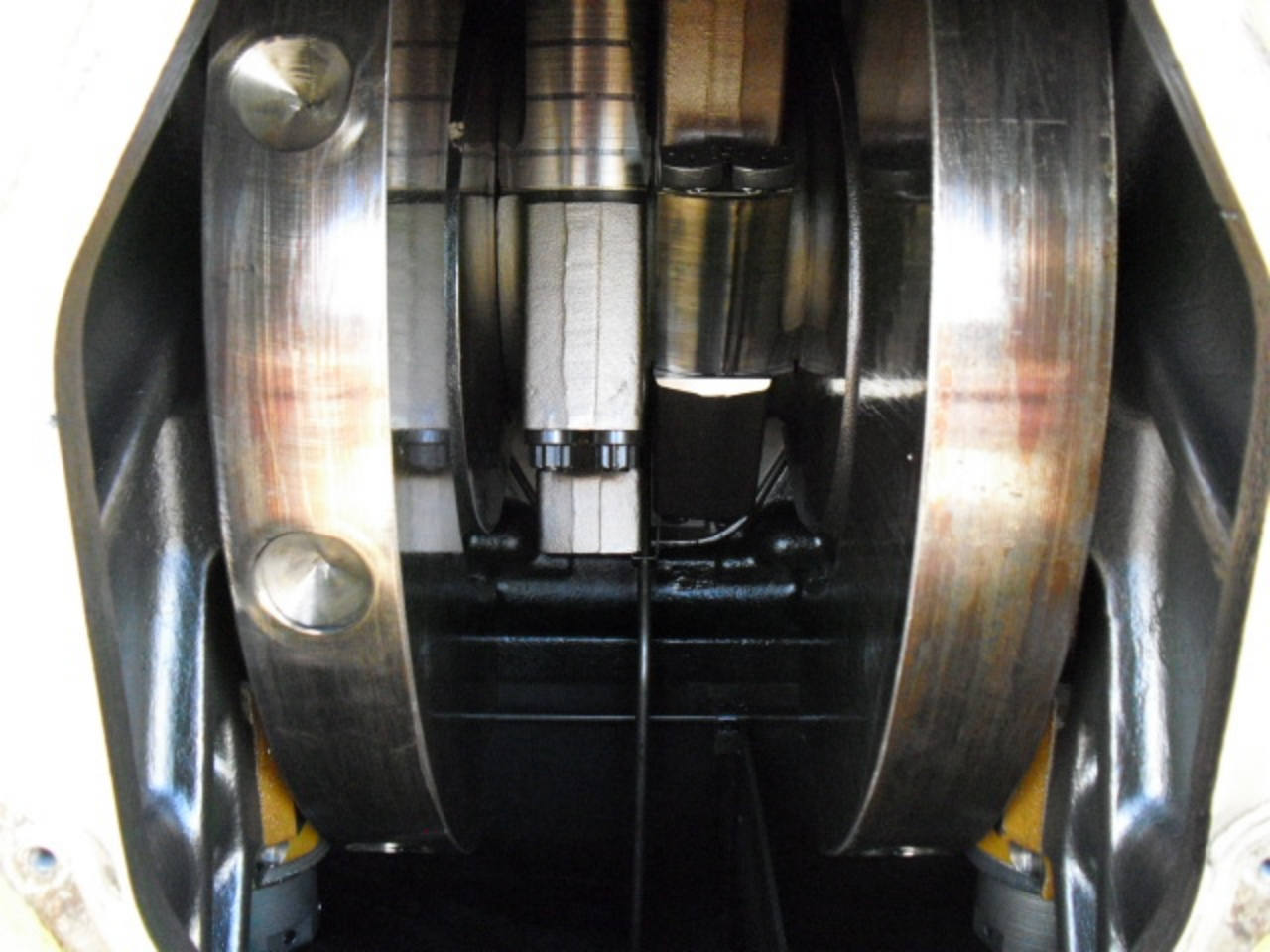


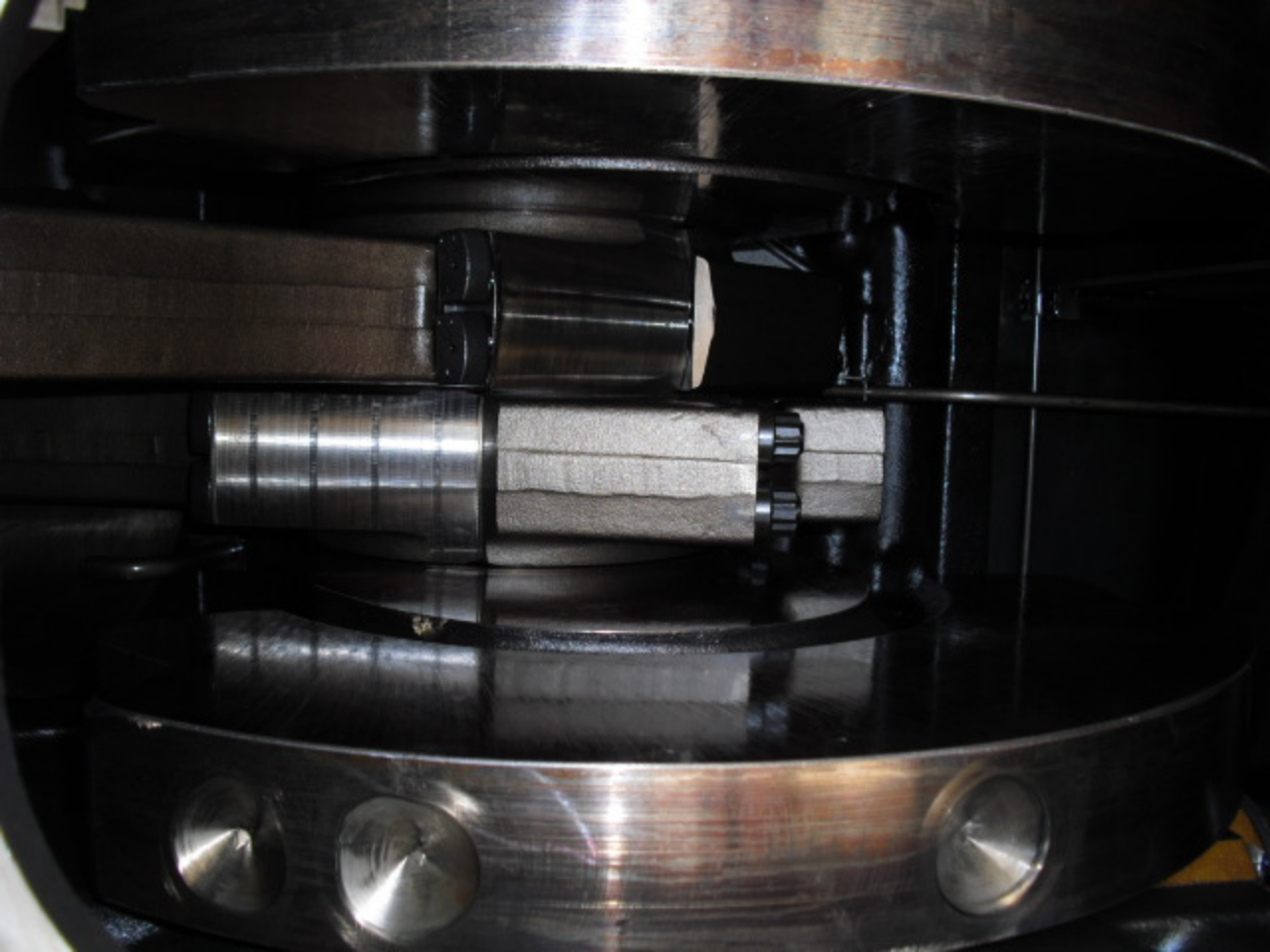


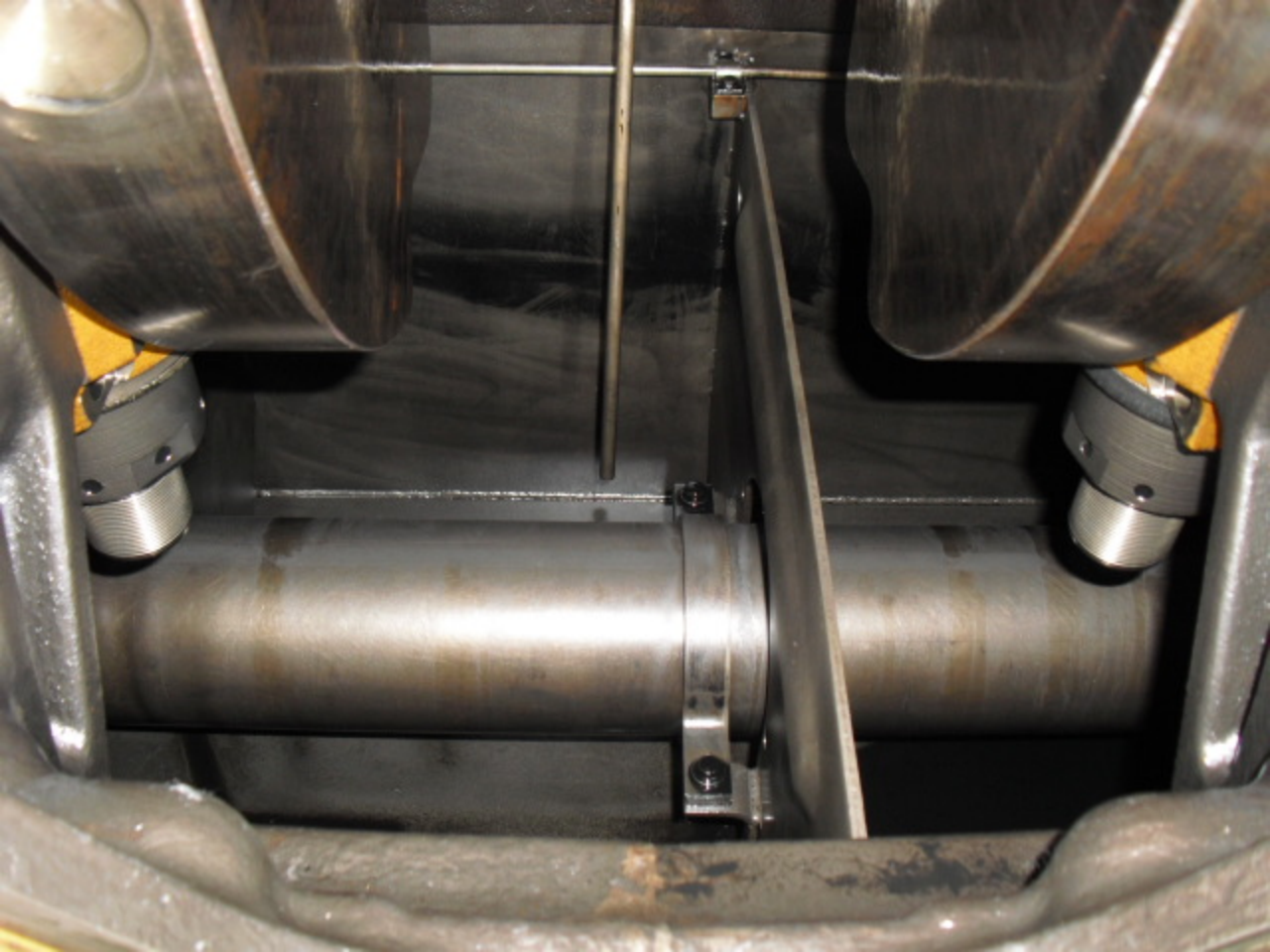








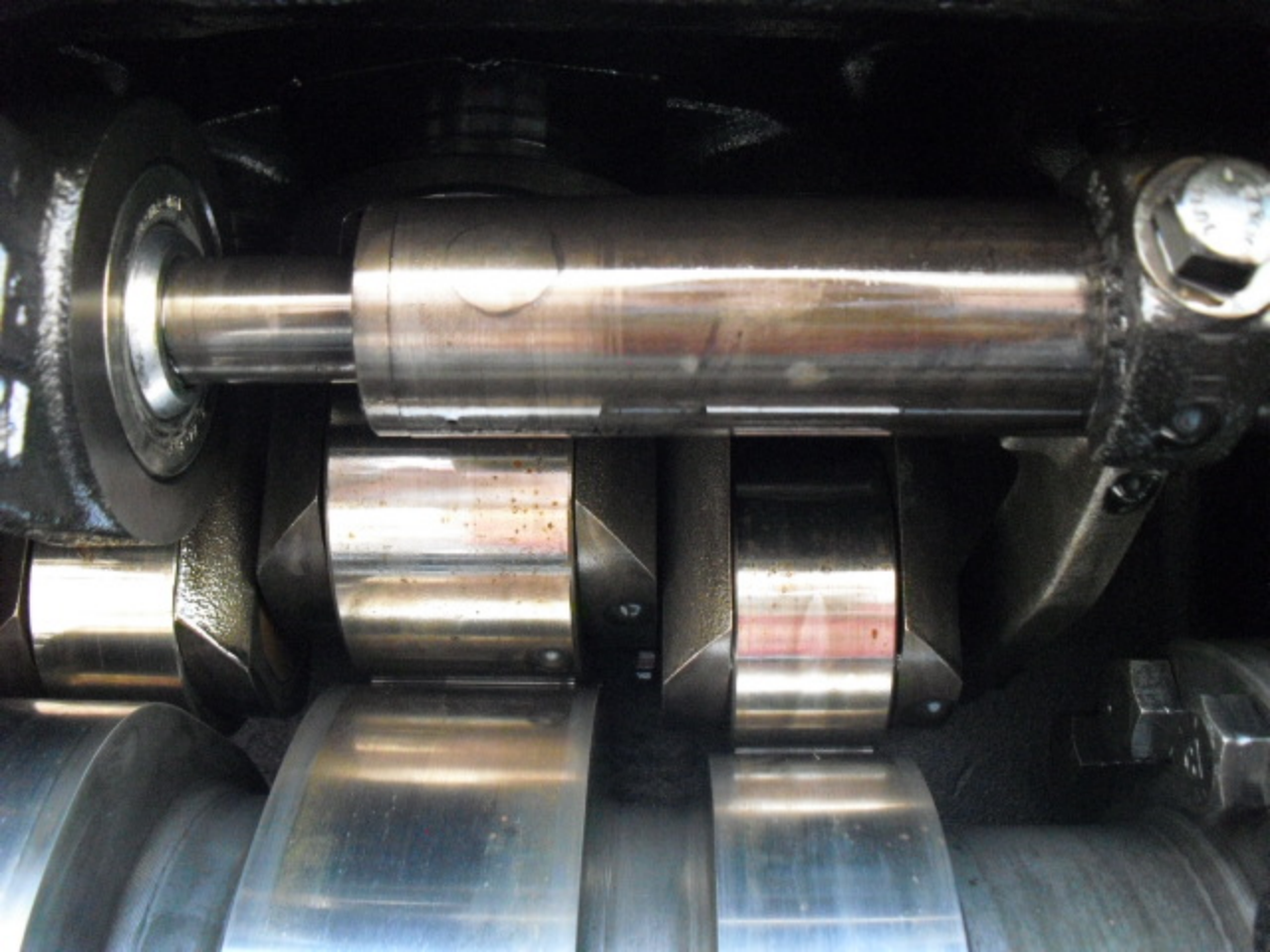


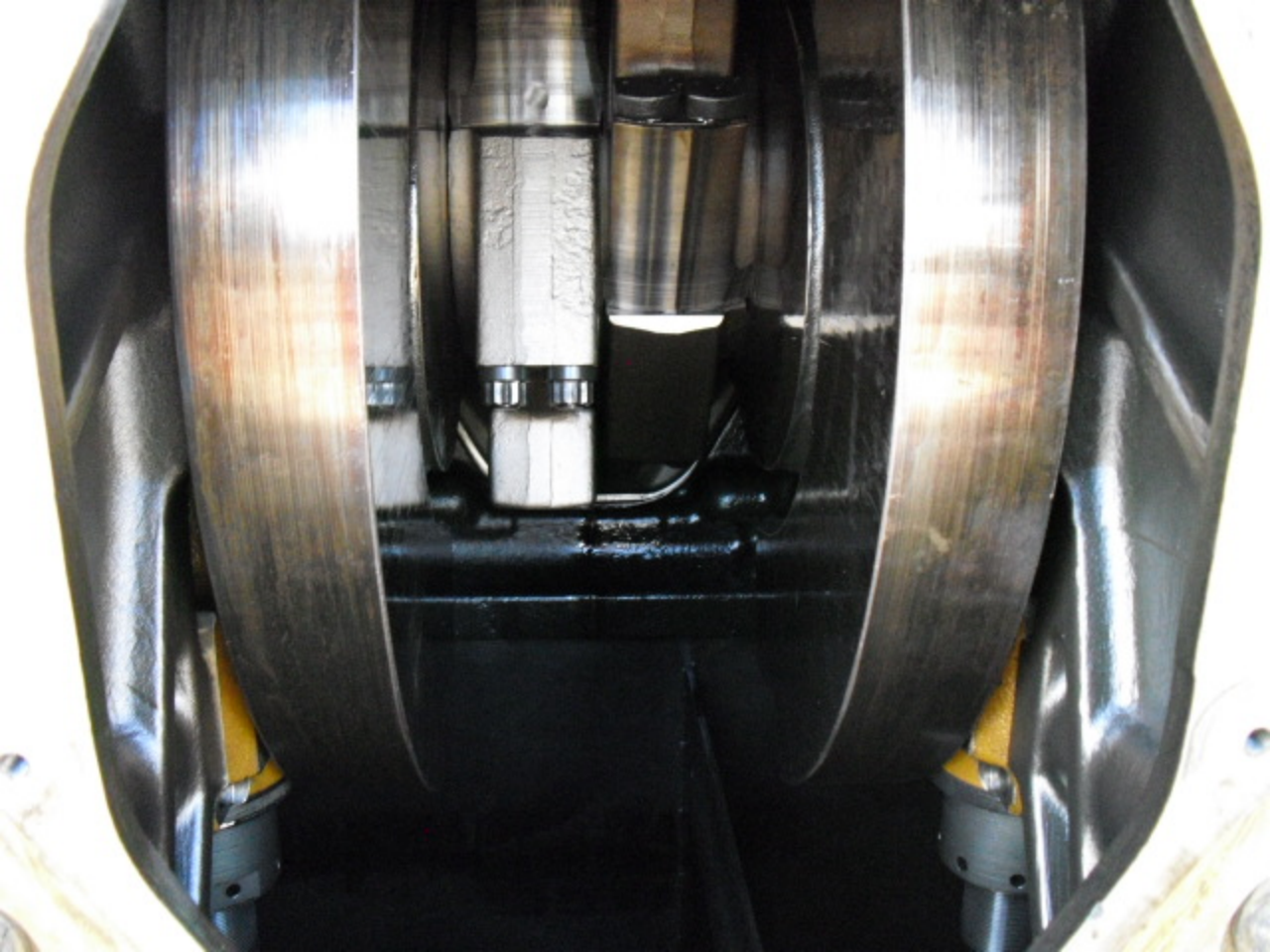


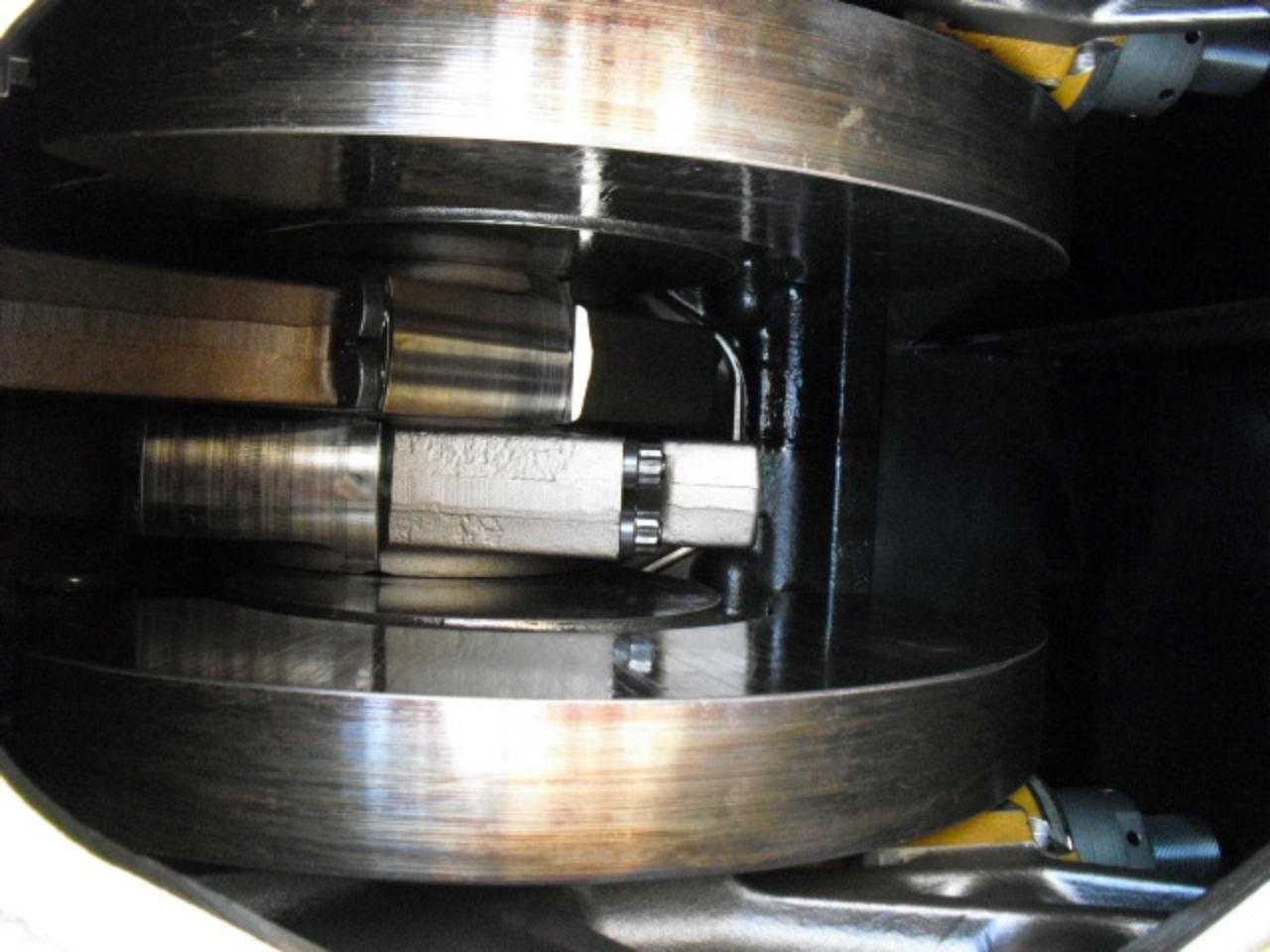












SYNCHRONOUS AC GENERATOR

BRUSHLESS

SERIAL NUMBER

CATALOG

MODEL NUMBER

TYPE NUMBER

94113

8P10-4000

A240730000

24073

IMPORTANT: WHEN ORDERING PARTS INCLUDE SERIAL AND TYPE NUMBERS.

ALTERNATOR

KW CONT.

3300

KW STANDBY

PHASE

HZ

60

KVA CONT.

4125

KVA STANDBY

P.F.

RPM

900

VOLTAGE

GEN. FLD. VOLTS

2400/4160

AMPERES

GEN. FLD. AMPS

572.5

TEMP. RISE

DESIGN AMB.

INSUL. CLASS

WIRE

100 °C

40 °C

F

5

EXCITER

EXC. ARM. "C" NUMBER

39037-55

EXC. FLD. "C" NUMBER

39073-55

FIELD
AMPS

EXC. FLD.
VOLTS

520

200

MANKATO, MINNESOTA U.S.A.

KATO ENGINEERING
RELIANCE ELECTRIC

157-00103-00

SYNCHRONOUS AC GENERATOR

BRUSHLESS

SERIAL NUMBER

94113

CATALOG

8P10-4000

MODEL NUMBER

A240780000

TYPE NUMBER

24078

IMPORTANT: WHEN ORDERING PARTS INCLUDE SERIAL AND TYPE NUMBERS.

ALTERNATOR

KW CONT.

3300

KW STANDBY

PHASE

3

HZ

60

KVA CONT.

4125

KVA STANDBY

P.F.

.8

RPM

900

VOLTAGE

2400/4160

GEN. FLD. VOLTS

AMPERES

572.5

GEN. FLD. AMPS

TEMP. RISE

50°C

DESIGN AMB.

40°C

INSUL. CLASS

WIRE

6

EXCITER

EXC. ARM. "C" NUMBER

39037-55

EXC. FLD. "C" NUMBER

39073-55

FIELD
AMPS

530

EXC. FLD.
VOLTS

100

MANKATO, MINNESOTA U.S.A.

KATO ENGINEERING
RELIANCE ELECTRIC

157-00103-00

WOODWARD
PART NO. B8251-760
SERIAL NO. 14495918
UG-A CCW ACTUATOR
WOODWARD 0510
MANUFACTURED BY WOODWARD CONTROL SYSTEMS
A DIVISION OF

OIL LEVEL
FILL TO MARK ON
GLASS WITH ENGINE
RUNNING OR MUST
BE VISIBLE IN
GLASS UNDER ALL
NORMAL CONDITIONS

WARNING
CONTROLLING DEVICE
TO PREVENT BODY INJURY
AND/OR PROPERTY DAMAGE
READ INSTALLATION, OPERATING
AND SERVICE INSTRUCTIONS

52096



ENGINE MODEL	3612 DL
SERIAL NUMBER	9RC00017
ARRANGEMENT NUMBER	7C6798
CATERPILLAR	
(ALWAYS GIVE ALL NUMBERS)	
PERFORMANCE SPECIFICATION	
MODIFICATION NUMBER	9Z5290
MADE IN U.S.A.	3N3780-6

CAT®

SER. NO. 9RC00017

MODIFICATION NO. 925290

AR NO. 706798

PERF SPEC

0T7108

MAX ALT

1800

OEM NO.

FULL LOAD

STATIC FUEL

6.1

FULL LOAD

STATIC FUEL

6.1

POWER

4627 HP

3450 kW

A/F RATIO DYNAMIC

-2.00

BARE ENG. IDLE RPM

907

FULL LOAD RPM

900

FUEL TIMING

118.0

9L6531-12

CAT®

CORE AR

ENGINE MODEL

36.2

SER. NO.

9RC00017

FACTORY INSTALLED COMPRESSION BRAKE

MODIFICATION NO.

925290

MAX ALT

FT

AR NO.

706798

PERF SPEC

0T-7108

OEM NO.

FULL LOAD

FULL TORQ. STATIC FUEL

CAT®

SER. NO. 9RC00017

DATE 01/10/06

MODIFICATION NO. 9Z5290

FILE CODE

AR NO. 7C6798

PERF SPEC

0T7108

MAX ALT

1800

OEM NO.

FULL LOAD

STATIC FUEL

6.1

FULL LOAD

STATIC FUEL

6.1

POWER

4627 HP

3450 kW

A/F RATIO

-2.00

BARE ENG. MIDDLE RPM

907

FULL LOAD RPM

900

FUEL TIMING

118.0

9L6531-12

CAT®

CORE AR

001 6/2006

ENGINE MODEL

3612

SER. NO.

9RC00017

FACTORY INSTALLED COMPRESSION BRAKE

MODIFICATION NO.

DI3495

AR NO.

7C6798

OEM NO.

PERF SPEC

0T7108

MAX

POWER	4627 HP	3450 kW	STATIC FUEL	6.1	
BARE ENG. HI IDLE RPM	907	FULL LOAD RPM	900	DYNAMIC FUEL TIMING	-2.00

9L6531-12



CORE AR

Oct 6/2006

ENGINE MODEL

3612

SER. NO.

9RC00017

FACTORY INSTALLED
COMPRESSION BRAKE

MODIFICATION NO.

P13475

AR NO.

7C6708

PERF SPEC

OT-708

MAX ALT

M FT

OEM NO.

FULL LOAD
STATIC FUEL

6.55 mm

FULL TORQ.
STATIC FUEL

RATED

HP

kw AT

RPM

BARE ENG.
HIGH IDLE
RPM

FUEL
TIMING

119 mm

with NEW
A/F RATIO DYNAMIC

TOR 1252

INJECTORS

POWER	4627 HP	3430 kW	DYNAMIC	= 2.0	
BARE ENG. HIGH IDLE RPM	907	FULL LOAD RPM	900	FUEL TIMING	118.0

9L6531 12



OCT 6/2006

CORE AR

ENGINE MODEL

3612

SER. NO.

9RC00017

FACTORY INSTALLED
COMPRESSION BRAKE

MODIFICATION NO.

D13475

AR NO.

706798

PERF SPEC

OT-7108

MAX
ALT

M
FT

OEM NO.

FULL LOAD
STATIC FUEL

6.55 min

FULL TORQ.
STATIC FUEL

RATED

HP

kw AT

RPM

BARE ENG.
HIGH IDLE
RPM

FUEL
TIMING

119 min

with New
AVE RATIO DYNAMIC

10R1252

INJECTORS

W. WOODWARD

PART NO. **B8251-760**

SERIAL NO. **14495918**

CUST NO. _____

UG-A **CCW**
ACTUATOR

W. WOODWARD 0510

MANUFACTURED BY WOODWARD GOVERNOR COMPANY
IN TIANJIN, CHINA.