

















REPUBLIC ELECTRIC & DEVELOPMENT CO.
PEORIA, ILLINOIS



HOLD IN

TO START

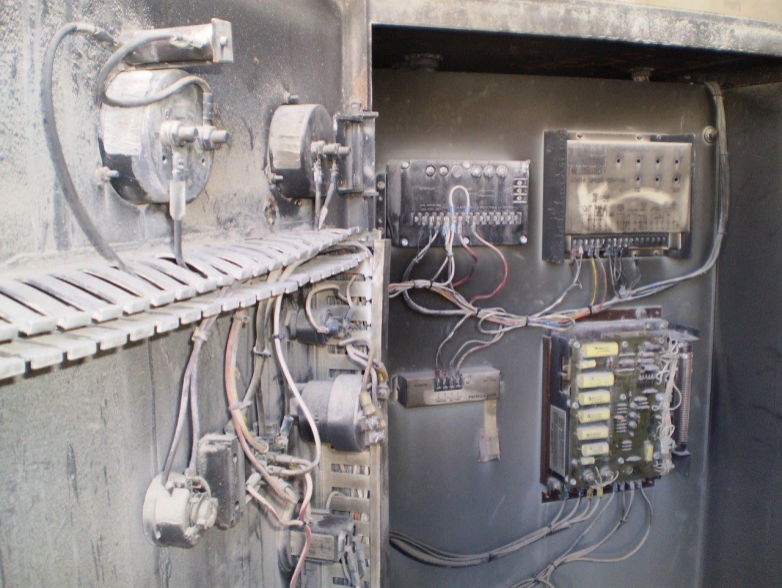


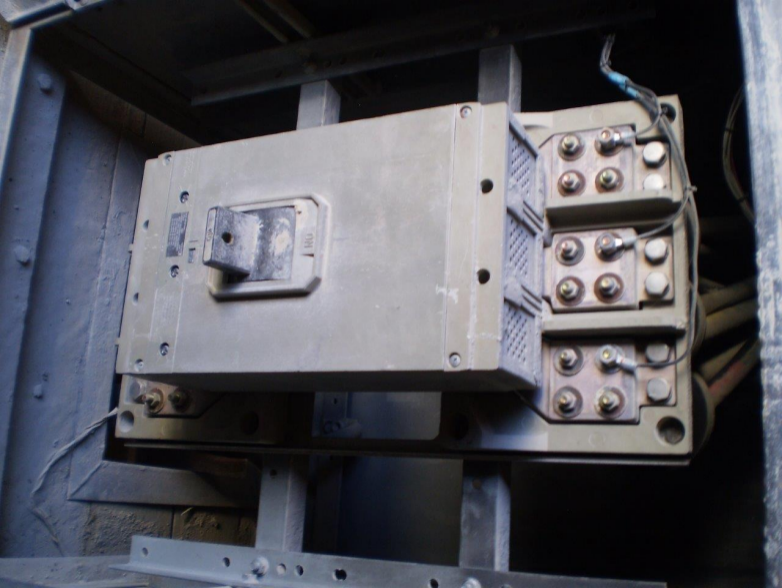
REG ON



Frederic Construction Company Service Record

Date	Time	By	Remarks
607 X		XXX	6-12-20







1 2 0

BEARING LUBRICATION

REPLENISH GREASE IN BEARINGS USING APPROXIMATELY THE AMOUNTS OF GREASE LISTED BELOW AND AT INTERVALS SHOWN IN RUNNING TIME HOURS OR MONTHS, WHICHEVER OCCURS FIRST. STOP FILLING WHEN GREASE BEGINS TO DRAIN FROM RELIEF VALVE OR FROM AROUND SHAFT.

USE DI-ESTER OIL-LITHIUM SOAP GREASE WHICH WILL LUBRICATE SATISFACTORILY TO A TEMPERATURE OF PLUS 250°F.

GREASE CONFORMING TO SPECIFICATION MIL-G-23827A IS RECOMMENDED.

BEARING NUMBER
DRIVE END

[REDACTED]

BEARING NUMBER
EXCITATION END

012-21202-00

REPLENISH INTERVAL IN RUNNING TIME HOURS

[REDACTED]

3000

REPLENISH INTERVAL IN MONTHS

[REDACTED]

24

REPLENISH AMOUNT IN OUNCES

[REDACTED]

1.0

KATO *Engineering*

MEMBER OF RELIANCE ELECTRIC



BRUSHLESS SYNCHRONOUS AC GENERATOR

SERIAL NUMBER

CATALOG

MODEL NUMBER

TYPE NUMBER

IMPORTANT: WHEN ORDERING PARTS INCLUDE SERIAL AND TYPE NUMBERS.

ALTERNATOR

KW CONT.

KW STANDBY

PHASE

HZ

173

3

60

KVA CONT.

KVA STANDBY

P.F.

RPM

127.3

.8

1200

VOLTAGE

GEN. FLD. VOLTS

347/600

AMPERES

GEN. FLD. AMPS

1240

EMP. RISE DESIGN AMB. INSUL. CLASS WIRE

C

C

EXCITER

EXC. ARM. "C" NUMBER

EXC. FLD. "C" NUMBER

FIELD
AMPSEXC. FLD.
VOLTS

WABICATO, MINNESOTA U.S.A.

KATO ENGINEERING

RELIANCE ELECTRIC



MODEL NO. OF CYL. BORE STROKE

16 6.25 8

ENGINE SERIAL NO. 35B234

DATE DELIVERED

DEALER

S/M HOURS OR MILES

HIGH IDLE ENGINE R.P.M. 1200

FULL LOAD ENGINE R.P.M. 1200

RACK SETTING .275

H.P. SETTING AT SEA LEVEL 1215

INJECTION TIMING

LIFTER SETTING AT T.C.

BILL OF MAT'L OR ESO NO. 5266

WARNING: TURBOCHARGED ENGINES ONLY — ENGINE HAS BEEN CORRECTLY SET TO OPERATE AT ALTITUDE LIMIT SHOWN.

5000 FT. OR BELOW

GOVERNOR AND TURBOCHARGER ARE SEALED. DO NOT CHANGE RACK SETTING, TURBINE NOZZLE OR ENGINE SPEED WITHOUT PROPER INSTRUCTIONS. THE RACK SETTING MUST BE CHANGED BY YOUR CATERPILLAR DEALER BEFORE OPERATING AT A HIGHER ALTITUDE.