



G

USED OIL
HAZARDOUS WASTE
10

PORTABLE TOILET

ELECTRICAL CABINET





HWR

HWS

NO SMOKING

USED OIL



HAZARDOUS
WASTE

LUBE OIL RETURN



LUBE OIL SUPPLY



PLANT AIR

PLANT AIR

PLANT AIR

CAUTION

PLANT AIR

PLANT AIR

WARNING
THIS UNIT
MAY START
AUTOMATICALLY
AT ANY TIME

4431-98

4431-98





GAS Regulator kit
190608

FISHER

190607
OIL PUMP KIT

00-11288-450

M5-12







POWER

ALARM



Waukesha
CUSTOM[®]
ENGINE
CONTROL

AIR/FUEL MODULE

AUTO OFF	STOP YES	ALARM OFF	STOP NO
LEFT MAN	LEFT FAST	LEFT SLOW	LEFT LEAN
RIGHT MAN	RIGHT FAST	RIGHT SLOW	RIGHT LEAN
F1	F2	F3	F4

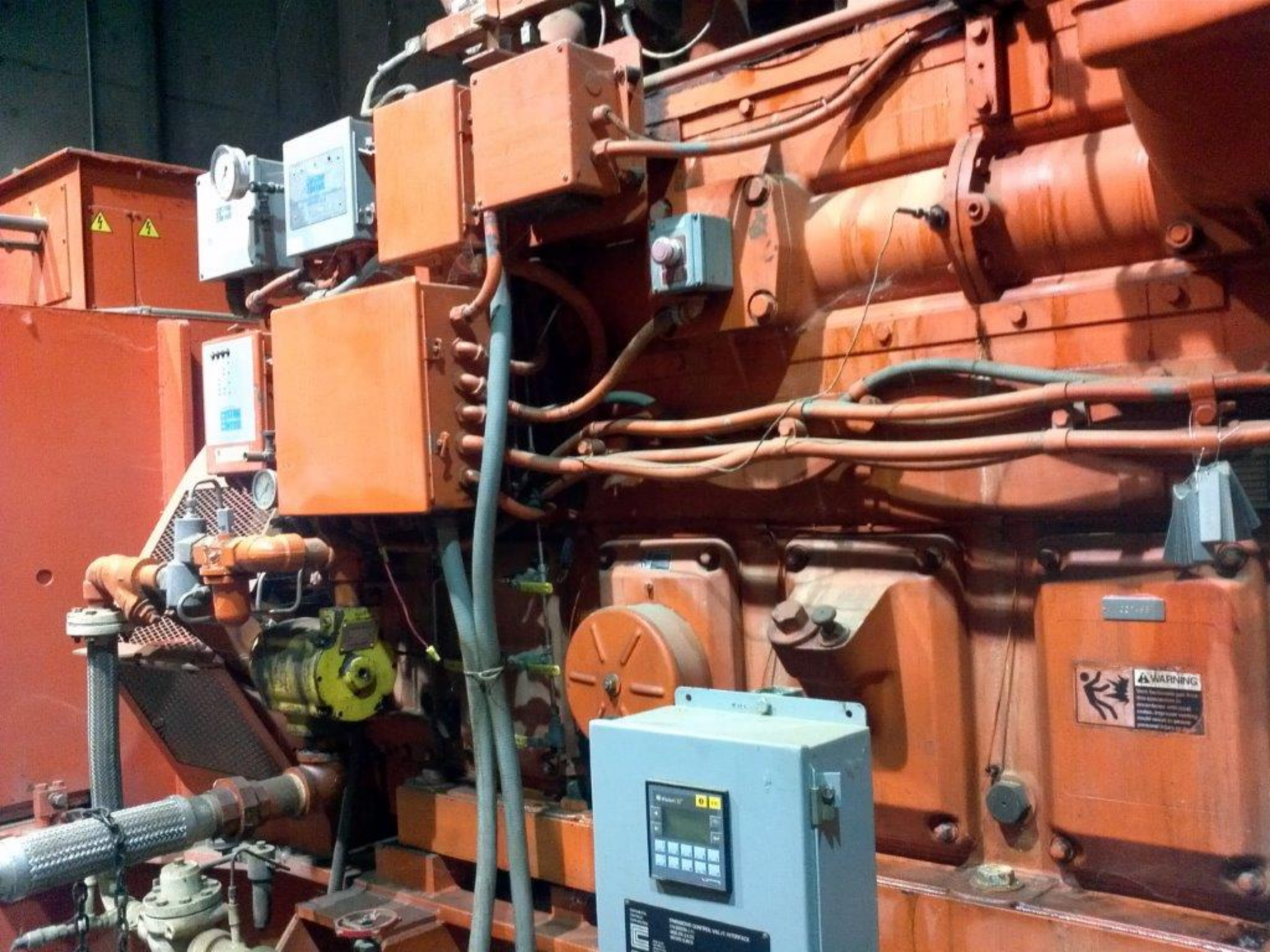




HWR

HWS





WARNING
Slip, Trip and Fall Hazard
Caution: Wet Surfaces
Caution: Oil Spills
Caution: Moving Parts

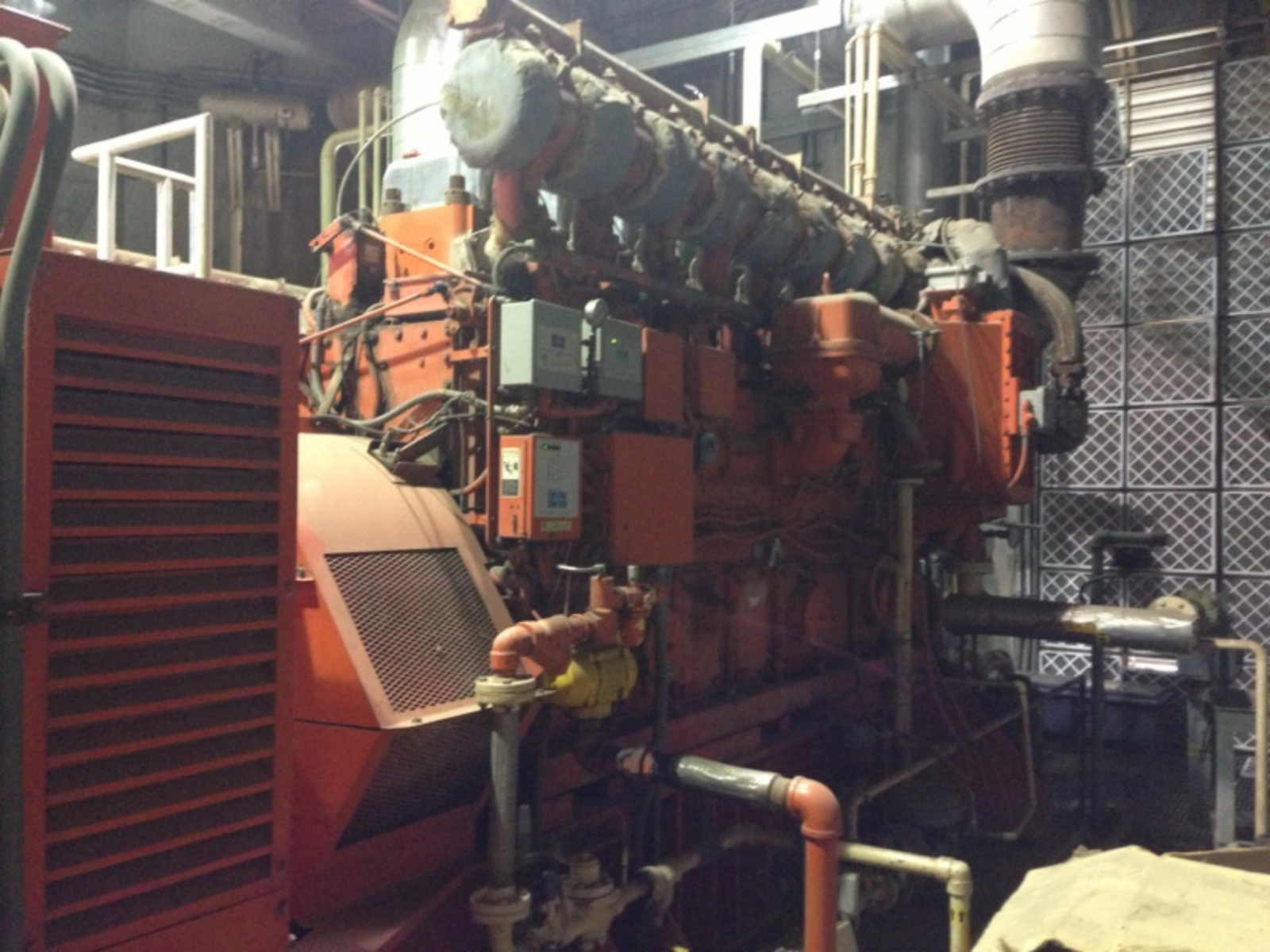
ENGINE CONTROL VALVE INTERFACE
MANUAL CONTROL VALVE INTERFACE
MANUAL CONTROL VALVE INTERFACE
MANUAL CONTROL VALVE INTERFACE







WAUKESHA





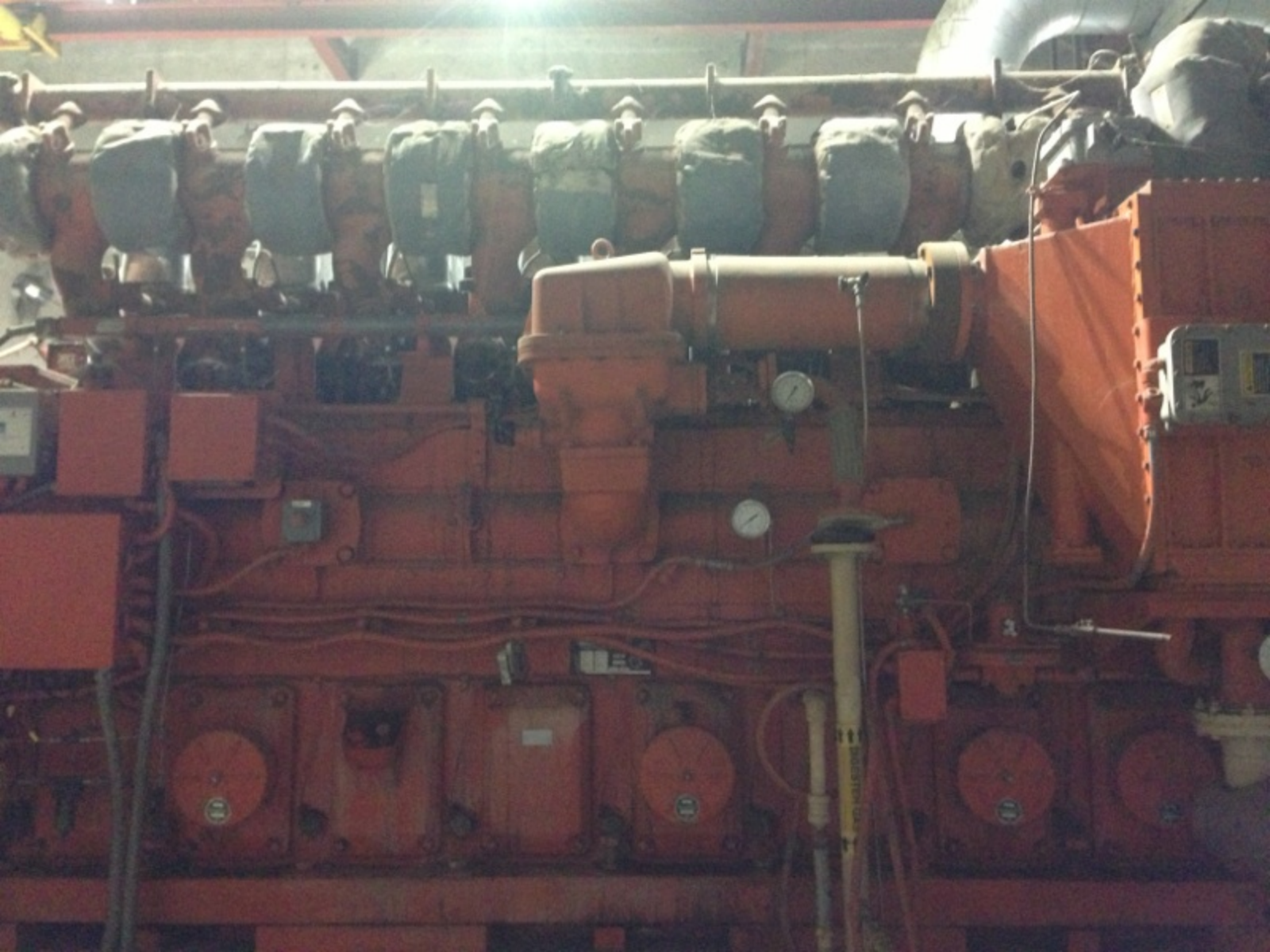
Type	LSA 56 S5-8P		N°	165194-2		IP	23	
Puissance Power rating	1400 kW	Cos φ	0.8		Δ		V	A
	1750 kVA	Rend Eff. %			Y	12470	V	A
tr/mn R.P.M.	900	60 Hz	Ph	3		Isolation Insulation Cl.		PdB WP
Service Duty	S1	Echauffement Temperature rise			K	Amb.	°C	
Régulat. A.V.R.	IEC 34	Excitation				En charge	V	
Date		A vide No load			A	Rated load	A	
Masse Weight		kg	Rlt côté entrainement DE BRG					
Quant.		g	Rlt côté opposé NDE BRG		CE			
Périodicité de graissage Grease every		h	Avec With					
Graisser en rotation Regrease in running	Ou tous les 6 mois Or every 6 months		Ou graisse équivalente - Or any equivalent grease Graisser à la mise en service - Regrease at the start up					

ALTERNATEUR IEC 34 A.C. GENERATOR

CE 30000376

Fabriqué par
Manufactured by

MOTEURS LEROY - SOMER - DPT. ACEO 45005 ORLEANS CEDEX 1 (FRANCE)









GARDNER DENVER

DANGER



