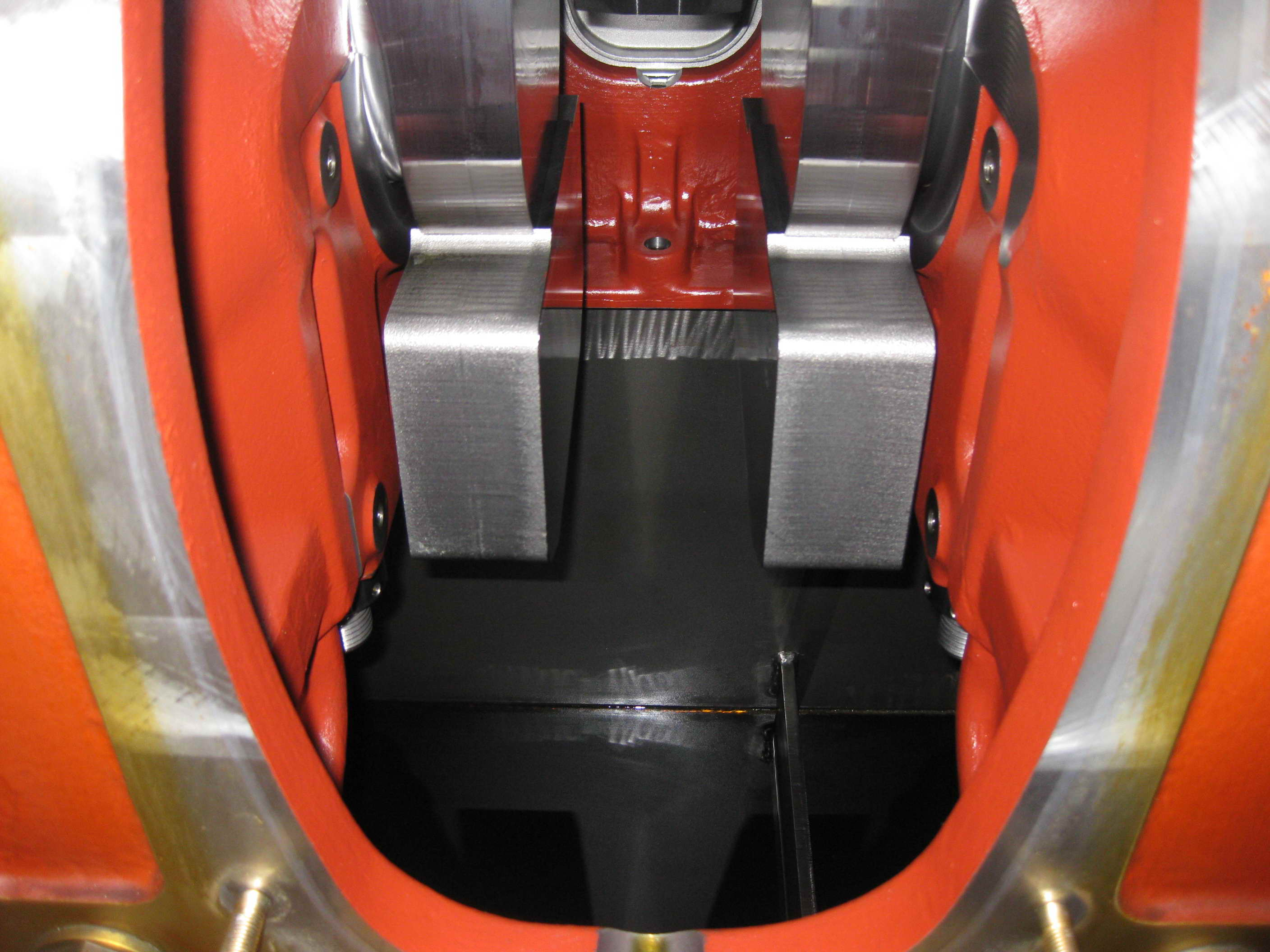
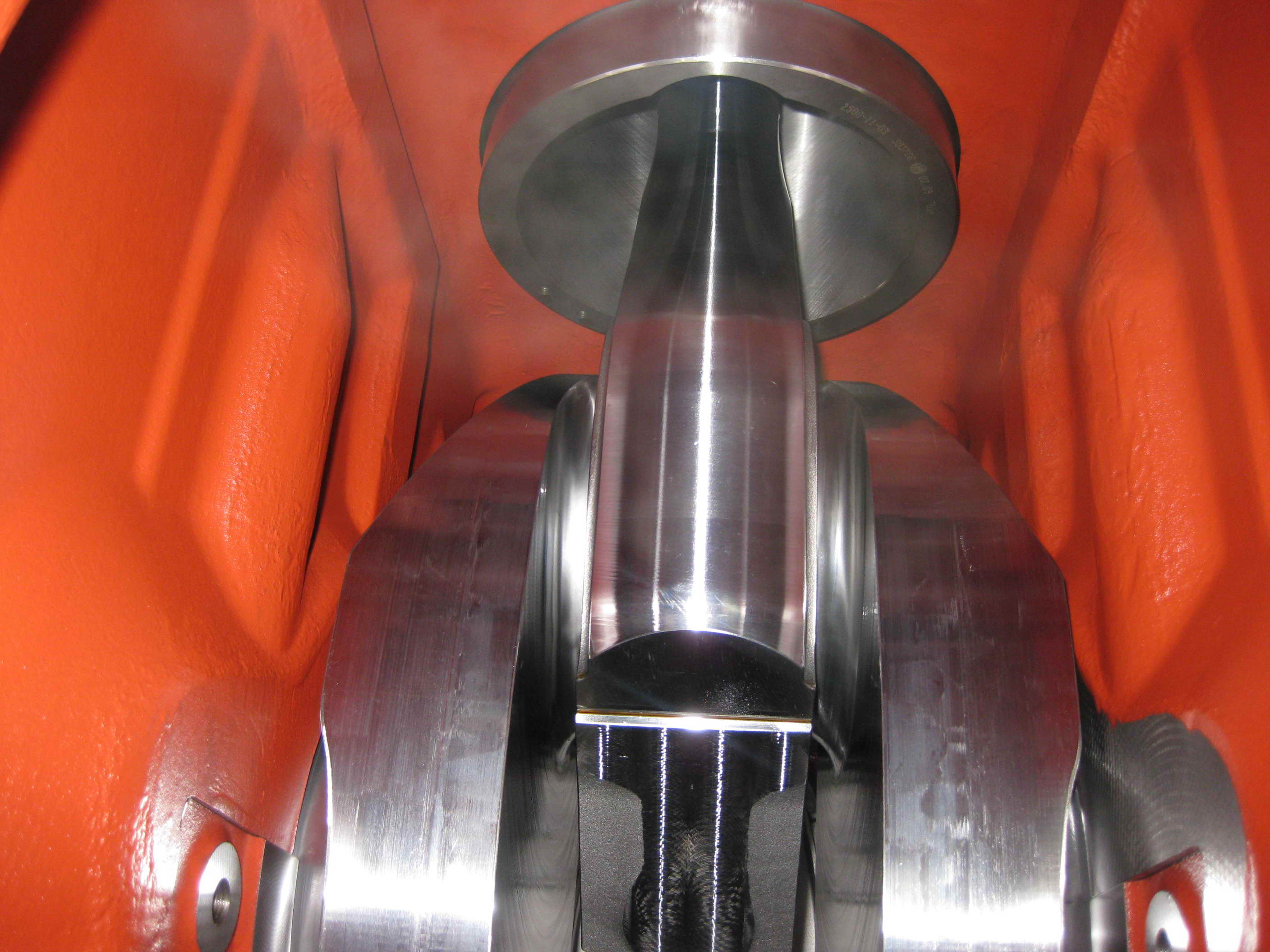


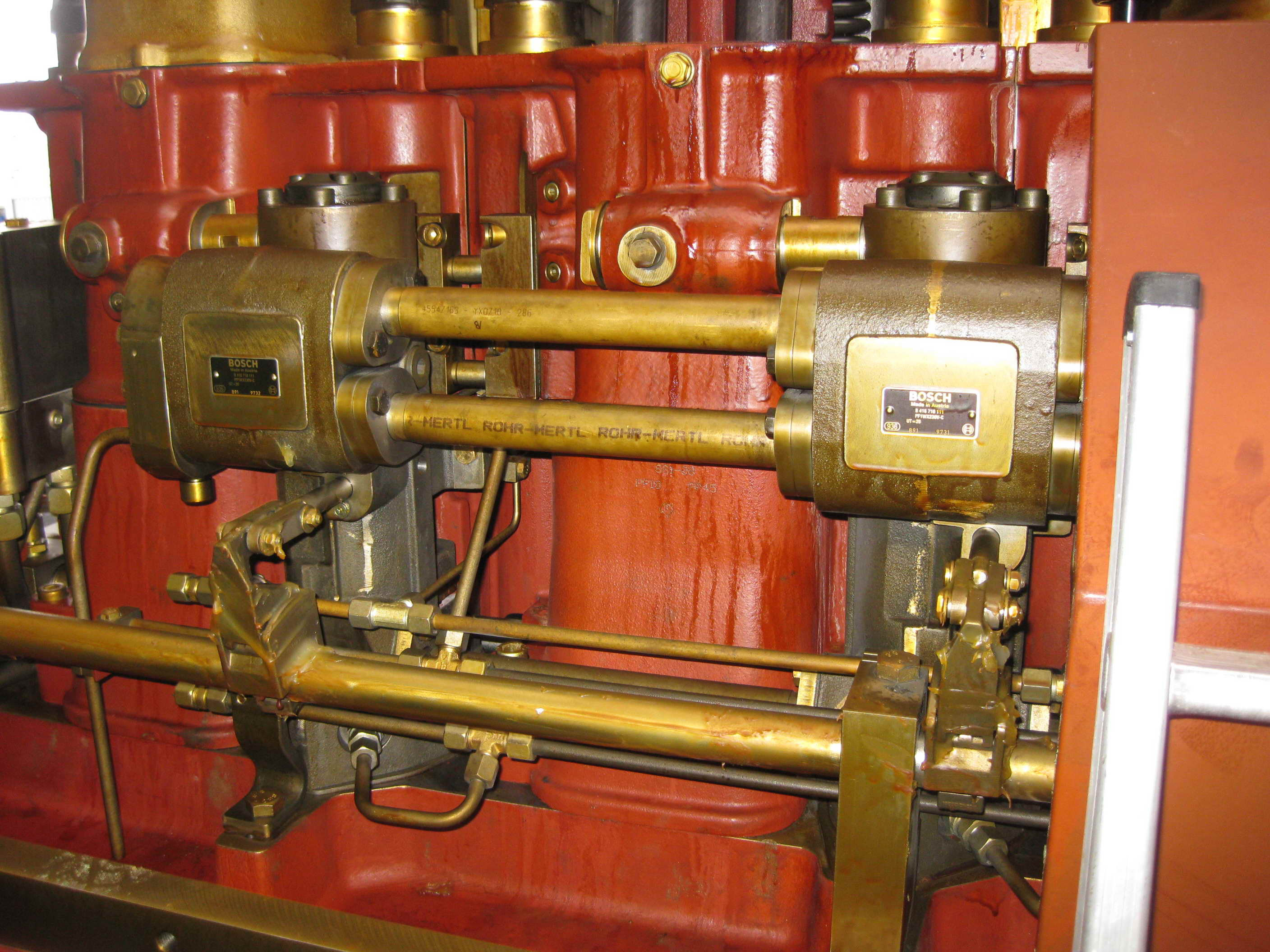
washing oil

Explosion-protected valve
CE

Explosion-protected valve
CE







BOSCH
Made in Austria
B 416 710 111
PP18122001-C
UT-20
891 9732

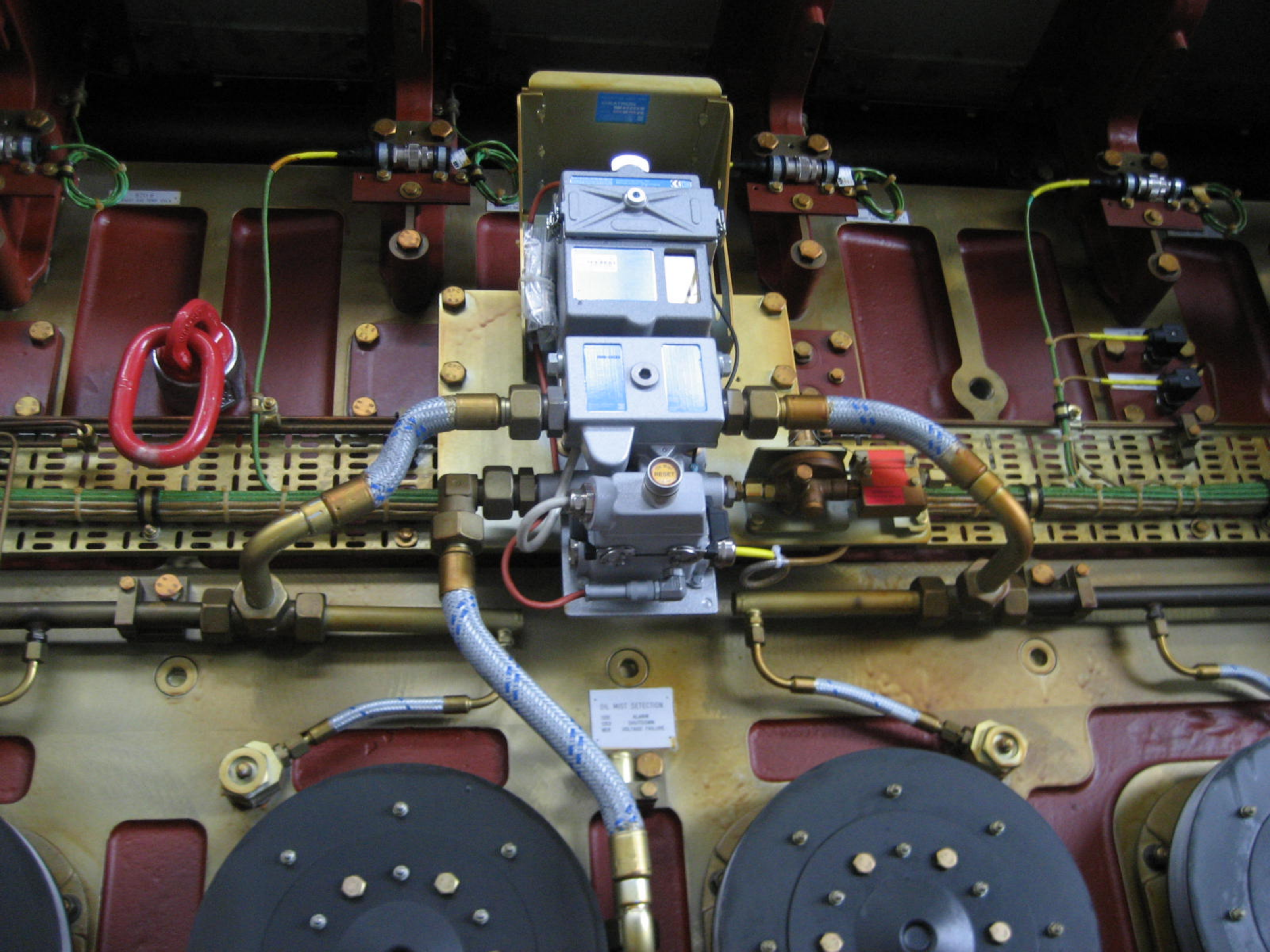
BOSCH
Made in Austria
B 416 710 111
PP18122001-C
UT-20
891 9731

45947103 - YXQZ10 - 286
R

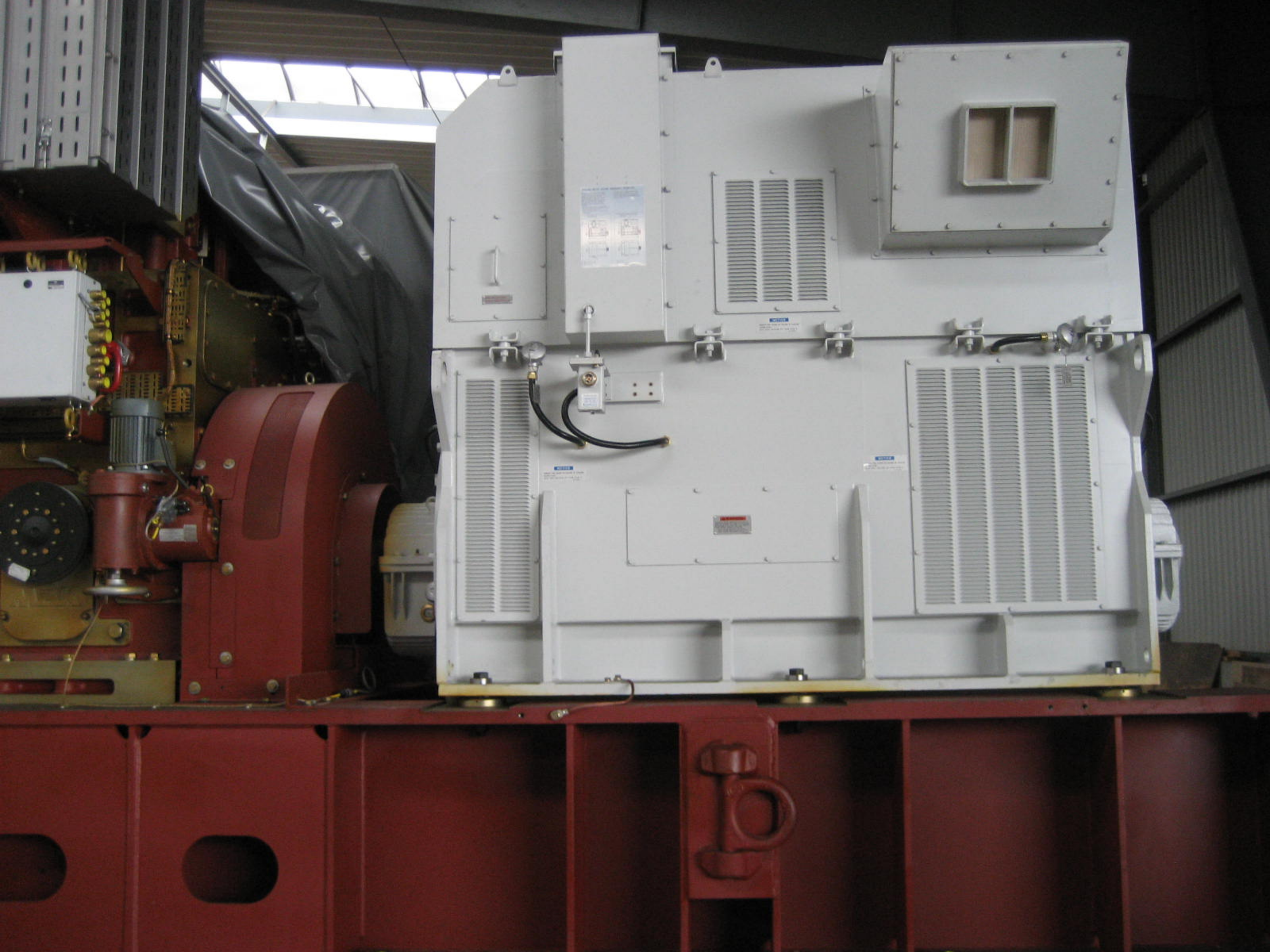
MERTL ROHR-MERTL ROHR-MERTL ROHR

891-50
PP121 PP45





OIL MIST DETECTOR
OIL SLAM
SYSTEM
MIST







HYUNDAI

3~SYN. GENERATOR

MAIN	2850	KVA	AC	690	V	2384.7	AMP	60	HZ
TYPE			HFJ7 716-14E		CONNECTION / RATING		Y/CONT		
RULE			GL		INSULATION CLASS		F		
PROTECTION DEGREE			IP 44		EXCITER VOLTAGE		95 VDC		
REVOLUTION			720		RPM	EXCITER AMP		10 ADC	
AMBIENT TEMP.			45		°C	TEMP. RISE(ARMATURE)		F	
POWER FACTOR			0.9		PF	TEMP. RISE(FIELD)		F	
MOUNTING			B20		OIL TYPE		ISO VG 32		
BEARING(D.E)			φ 180*L210		BEARING(N-D.E)		φ 150*L180		
INITIAL SUPPLY(D.E)			6.8 LITER		INITIAL SUPPLY(N-D.E)		5.5 LITER		
SPACE HEATER			1 φ		230 V		1000 W		
WEIGHT			11200		KG	MANUFACTG DATE		2008.10	
SERIAL NO.			20080532RAL12801		APPLICABLE CODE : IEC 60024		4M-078993		

MADE IN KOREA