



CATERPILLAR

140-1421
-00-







49-0710



CATERPILLAR

Small white label with illegible text, possibly a maintenance or safety instruction.





⚠ WARNING
⚡
⚠

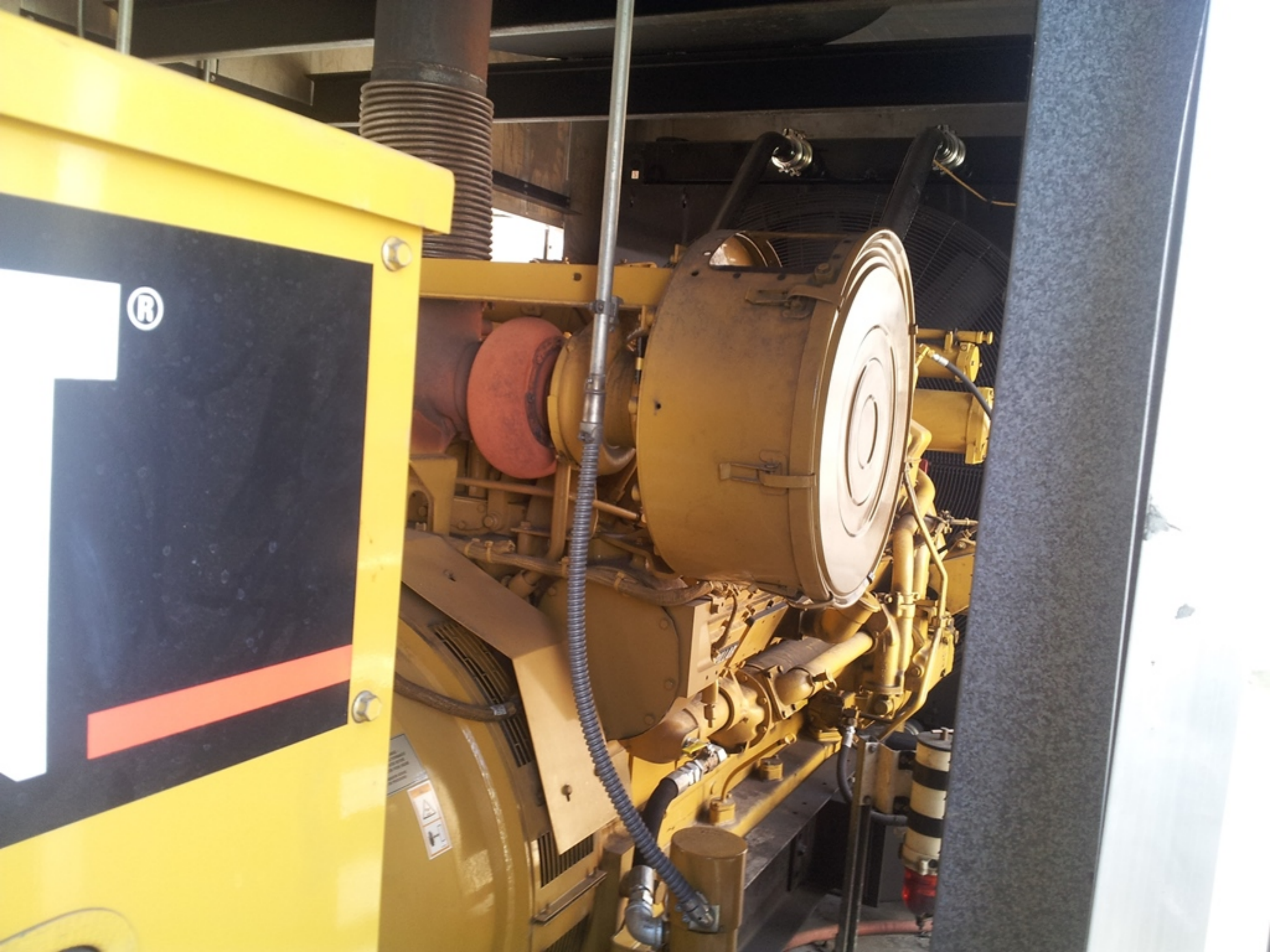
⚠ WARNING
⚡ HIGH VOLTAGE ⚡
POWER SOURCE MUST BE
DISCONNECTED BEFORE
WORKING ON EQUIPMENT.
FAILURE TO DISCONNECT POWER
SOURCE COULD RESULT IN
DEATH OR INJURY.

⚠ WARNING
⚡

⚠ WARNING
⏻ AUT ⏻

⚠ WARNING
⚡





SERVICED BY
TAW POWER SYSTEMS
 FOR 24 HR SERVICE CALL:
 1-800-452-9999
 TAMPA FL 33607
 ORLANDO FL 32803
 JACKSONVILLE FL 32202

CAT®

WARNING
 DO NOT CONNECT GENERATOR TO A UTILITY ELECTRICAL DISTRIBUTION SYSTEM UNLESS IT IS ISOLATED FROM THE SYSTEM. ELECTRICAL FEEDBACK INTO THE DISTRIBUTION SYSTEM CAN OCCUR AND COULD CAUSE PERSONAL INJURY OR DEATH.
 OPEN AND SECURE MAIN DISTRIBUTION SYSTEM SWITCH OR IF THE CONNECTION IS PERMANENT, INSTALL A DOUBLE THROW TRANSFER SWITCH TO PREVENT ELECTRICAL FEEDBACK. SOME GENERATORS ARE SPECIFICALLY APPROVED BY A UTILITY TO RUN IN PARALLEL WITH THE DISTRIBUTION SYSTEM AND ISOLATION MAY NOT BE REQUIRED. ALWAYS CHECK WITH YOUR UTILITY AS TO THE APPLICABLE CIRCUMSTANCES.

WARNING
HIGH VOLTAGE
 POWER SOURCE MUST BE DISCONNECTED BEFORE WORKING ON EQUIPMENT. FAILURE TO DISCONNECT POWER SOURCE COULD RESULT IN INJURY OR DEATH.

WARNING

WARNING
AUT

WARNING

