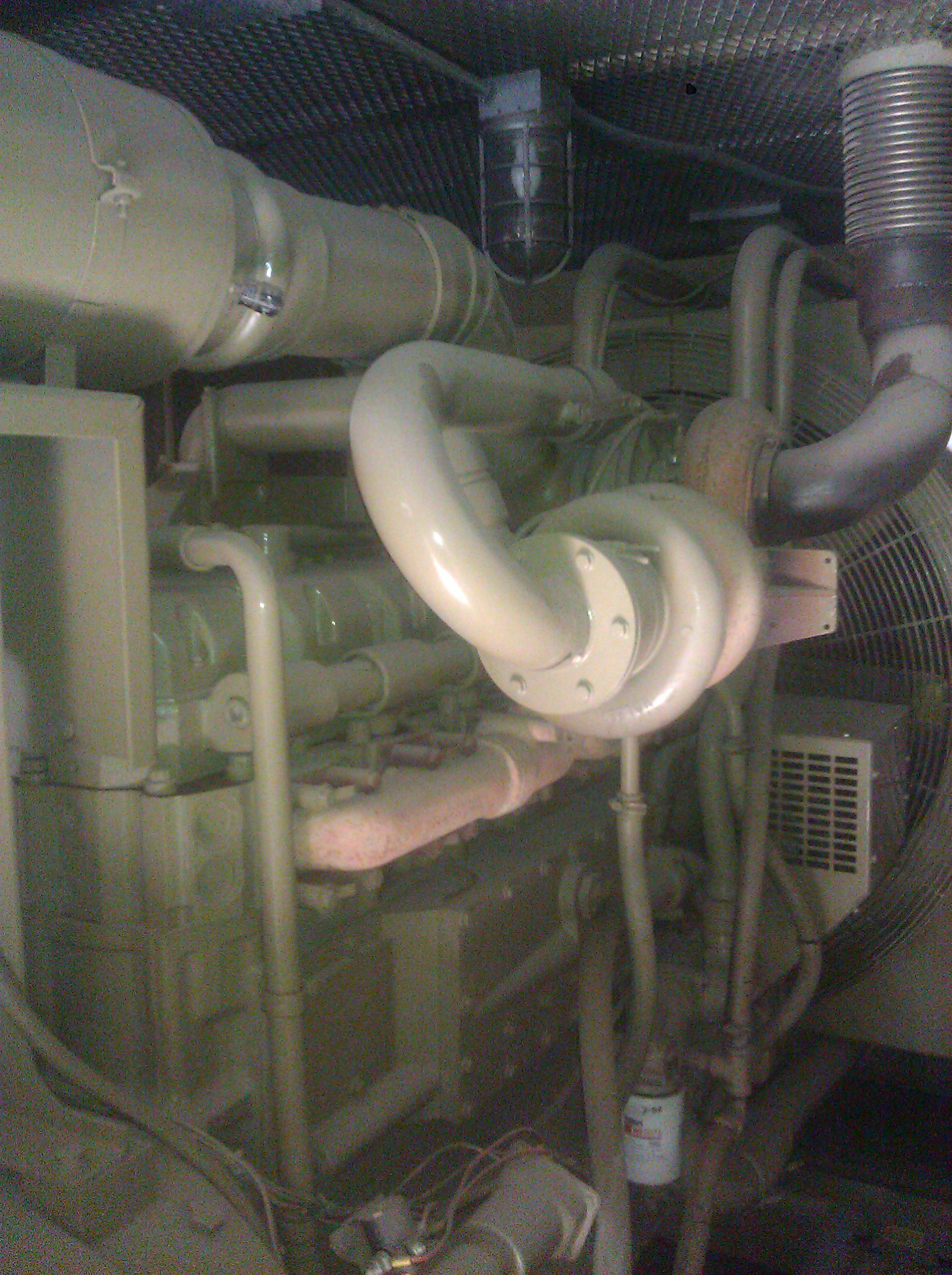




**DANGER**







Voltage



Three Phase  
2-1-3  
L2  
1-1-2  
L1  
L1-L2  
L2  
L3-1  
L3  
L3-L2  
L3  
Single Phase

Field  
Breaker



**▲ DANGER**  
  
Hazardous voltage.  
Will cause severe  
injury or death.  
Disconnect all  
electrical supply  
sources before  
servicing.



Stop  
(Reset)



Run

Reset  
Lamp Test

Remote

Panel  
Lamp



Frequency



1110

Push For  
Emergency Stop



Set







ABSOLUTELY  
**NO**  
PARKING  
ANYTIME  
CPHAT FORM 10-25 104

**NO TRESPASSING**  
1. No entry without permission from the owner.  
2. No entry without permission from the City of...  
3. No entry without permission from the...  
4. No entry without permission from the...  
5. No entry without permission from the...

UNLAWFUL  
VEHICLE  
PARKING  
AT ALL  
TIMES

**MARCHE**  
VOLT FLOAT

1146-6124V-01  
3-3987-3

W	S	120 VAC
AC AMPS	3	
PHASE	1	NZ 58/68
NO. CELLS	4	DC VOLTS 24V
	12	TYPE GELL LG

MARCHÉ S.A. 4000 GOR. DES BOULEV. IL 60115  
TEL. 2.85.00.01. OTHERS PENDING - MADE IN U.S.A.



UL LISTED BATTERY CHARGER 573L  
NOL SP LR14209



EQUALIZE  
FLOAT

DISC  
BEFORE  
AV  
DECON  
AVANT



# AC Generator Set

Model **KTTA-19-62**

kw 500      kva 625      pf .8      phase 3

voltage 277/480      amps 752

duty STANDBY      overload

rpm 1800      hz 60

class of insulation H      pmg voltage

field amp max      field voltage max

generator model no. HC534D      S/N Y3613-11

voltage regulator model no.

ID no. 500KTT12/36241E

generator set serial no. A900296430

BS5000 Part 99

NEMA MG1-22

3080803  
00-2388