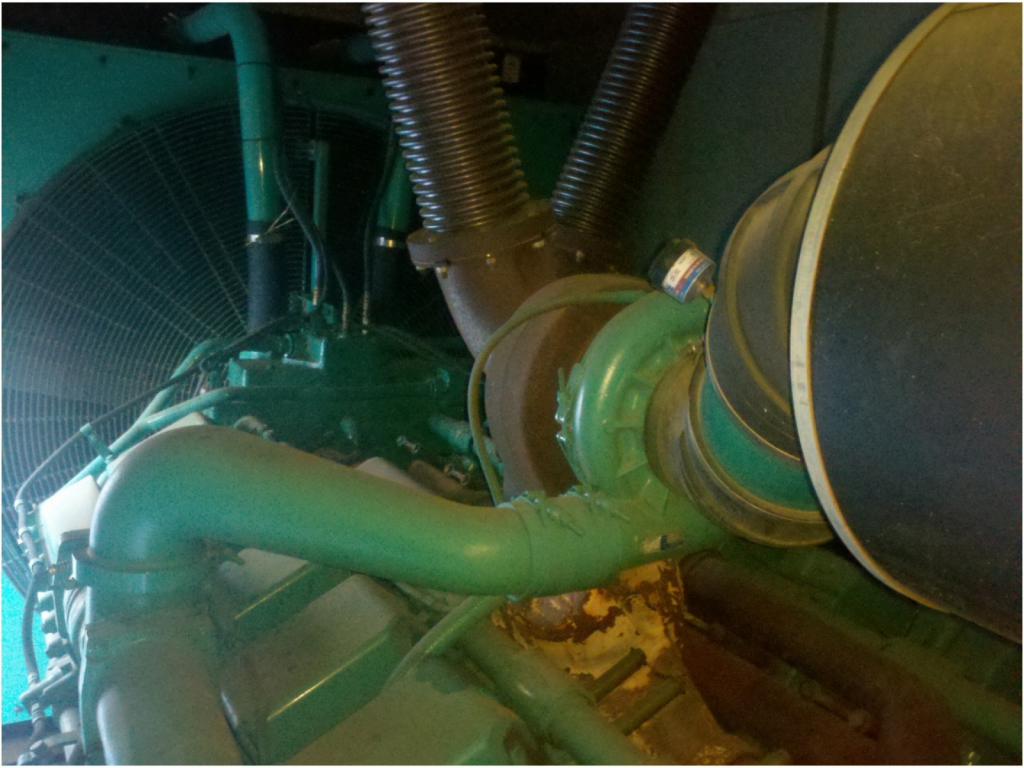




1993



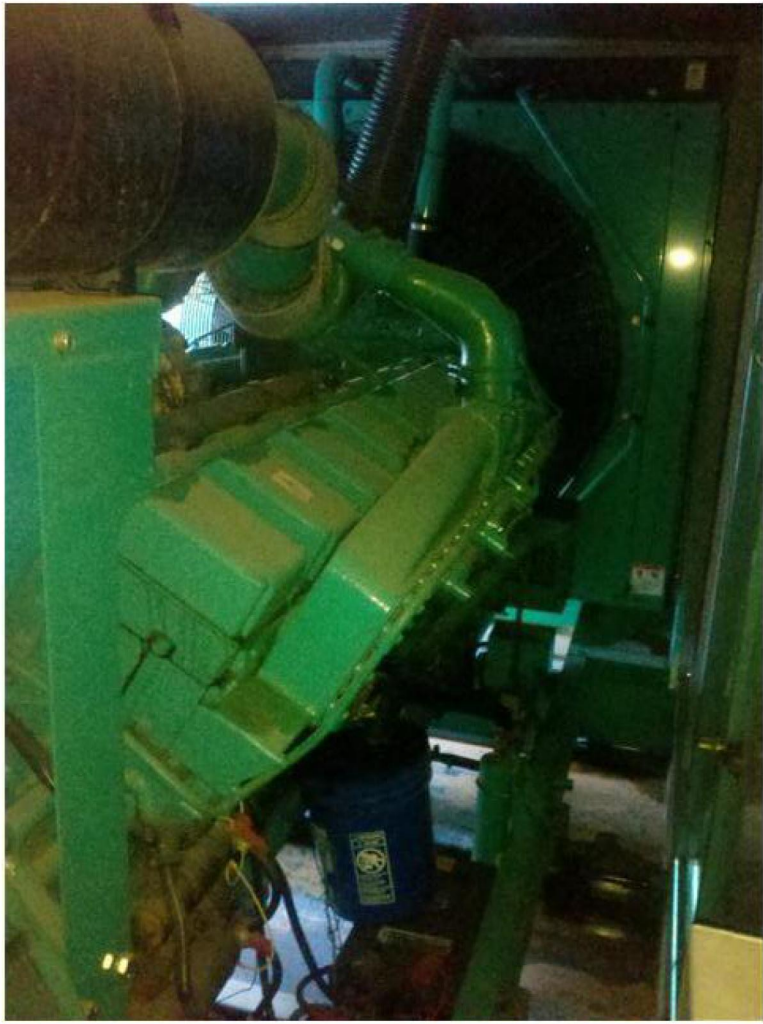












OUT BEFORE SERV

GEN NORMAL



GEN SHUT DOWN

SERIAL PORT T  

EN	TRIP	INST	COMM	SOFT	S0	S1	S1
IN	IN	IN	IN	IN	IN	IN	IN
A	B	C	G	N	RS	CY	LO
FAULT TYPES							

  
 METER EVENTS STATUS OTHER SET CHTR. GROUP  
 TARGET LAMP CANCEL SELECT LEFT RIGHT UP DOWN EXIT  
 TEST TEST

SEL-351  
 DIRECTIONAL OVERCURRENT RELAY  
 RECLOSING RELAY  
 FAULT LOCATOR  
 SELogic<sup>®</sup> CONTROL EQUATIONS

**SEL** SCHWEITZER ENGINEERING LABORATORIES  
 PULLMAN WASHINGTON USA  
U.S. Patents 5,241,725 5,209,545 5,317,472 5,346,440 5,360,556 5,479,915  
 Foreign Patents 10447 10448 U.S. and Foreign Patents Pending 199-0123

REMOVAL OF THIS PANEL EXPOSES CIRCUITRY WHICH MAY CAUSE ELECTRICAL SHOCK THAT CAN RESULT IN DEATH OR SERIOUS INJURY

SERVICE DISCONNECT  
NORMAL DISCONNECT





Power Generation

# PowerCommand Transfer Switch



Source 1

Source 2

Connected

Available

Transfer operation cannot be delayed by external control

Not In Run

Test/Exercise Active

Test  
Push 2 Sec

Override

Reset /  
Lamp Test



Home

Previous  
Menu

52

# PowerCommand



## Digital Paralleling Control

- Non-Automatic
- Warning
- Shutdown

### Paralleling Error(s)

- Close
- Open



STARTS 414 <<  
MPS 80965.3



Reset

More

Self Test

Panel Lights

- Upper Scale
- Lower Scale

Voltage	Amperage
0.0	0.0
0.00	0.00
0.00	0.00
0.00	0.00

Phase Shift



### ⚠ WARNING

Read and understand all safety instructions and warnings provided with all equipment. Read and understand the manual for the equipment. Do not use the equipment unless you are qualified to do so. Do not use the equipment unless you are qualified to do so.

Always wear your safety glasses. Do not touch the equipment unless you are qualified to do so. Do not touch the equipment unless you are qualified to do so.

For more information, contact the manufacturer. Do not use the equipment unless you are qualified to do so.

For Service Call

**Customs Onan**  
SOUTH

8 West Market Court  
Sarasota, FL 34231-1001  
813-557-1000



SERIAL NUMBER	0195313/002
MACHINE ID NUMBER	A05E406771
FRAME / CORE	PI734B1
KVA BASE RATE (BR)	1690.0
KW BASE RATE (BR)	1352.0
HZ	60
RPM	1800
VOLTS	480
PHASE	3
AMPS BASE RATE (BR)	2032.8
PF	0.80
RATING	CONT.
EX. VOLTS	62
EX. AMPS	3.20
AMBIENT TEMP. C	40 C
ENCLOSURE	IP23
INSULATION CLASS	H:UL1446
STATOR WDG.	12
STATOR CONN.	STAR
AVR	CPG SP

# NEWAGE

NEWAGE INTERNATIONAL LTD  
BARNACK ROAD  
STAMFORD, LINCOLNSHIRE.  
PE9 2NB, ENGLAND

BS 5000: PART 3 IEC 34-1  
NEMA MG 1-32 ISO 8528-3

# STAMFORD

AC GENERATORS



LR 11305

Model No.  
Modelle

**DFLC-5708735**

Serial No.  
Série

**F050798803**

Spéc. W

IMPORT/MTI

Model & Serial No. Request When Ordering Parts  
Modèle & No. Série Requies Pour Commander Des Pièces.

99-2433

**CUMMINS POWER GENERATION**

1400 73RD AVE., N.E.

MINNEAPOLIS, MN 55432 U.S.A.

MFG. IN U.S.A.

FREQUENCY

SERVICE RATING

PHASE

RATED KW

POWER FACTOR

RATED AVA

1 $\phi$  CAPABILITY

CONNECTION

W.E.

BATTERY

24-VDC

AC Hz	STANDBY	PRIME
1PH	1250.0	1PH 3PH
0.0	0.0	0.0 0.0
0.0	0.8	0.0 0.0
0.0	150.0	0.0 0.0

AVR

1070.5

AVR

ROTATING

SPEED

1800RPM

NORMAL

RATED

FUEL

Class 1

WIRING DIAGRAM

0612-6615



For Electrical Equipment Only  
Pour Matériel Electrique Seulement