

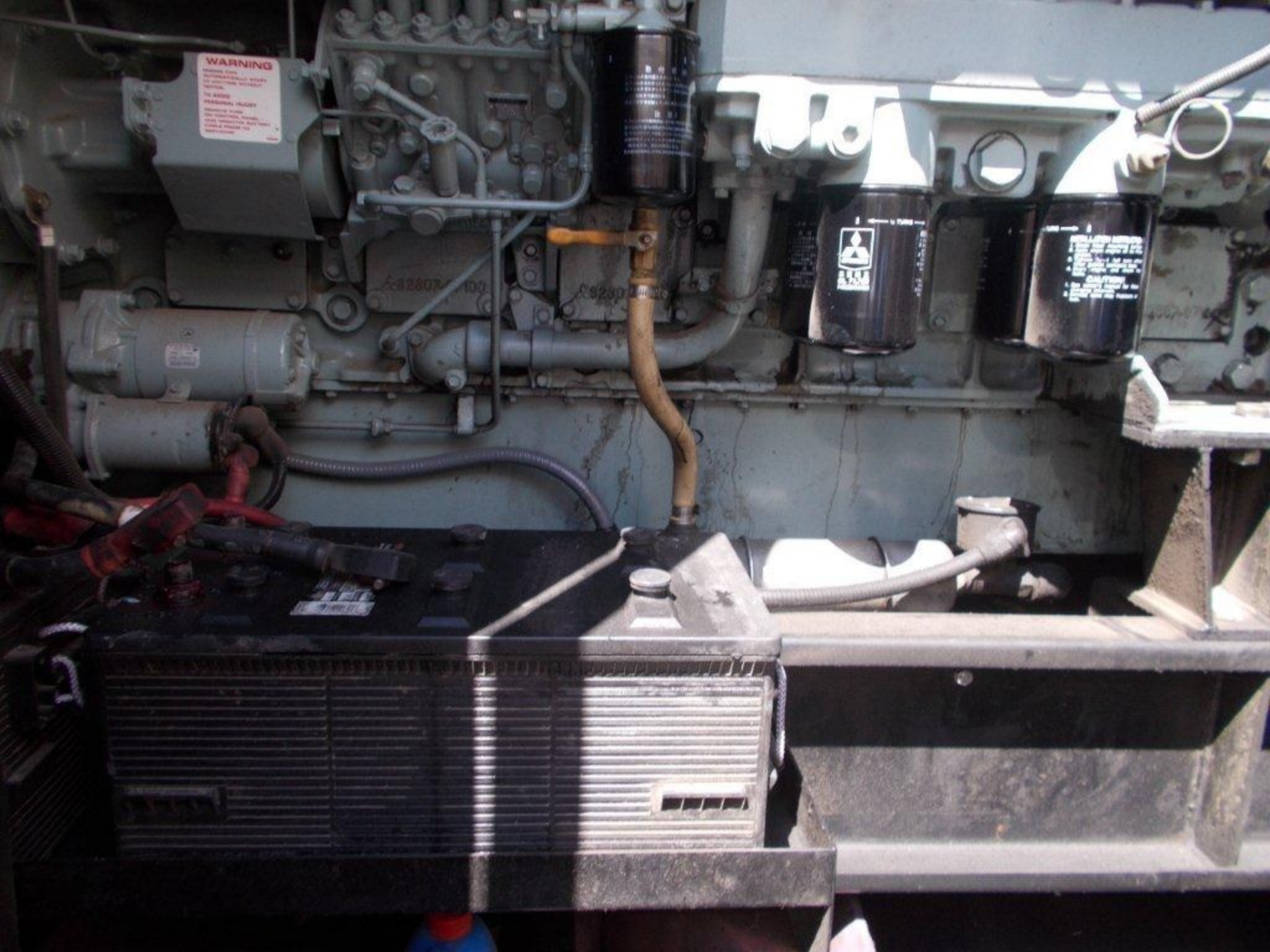
**WARNING**  
AVOID CONTACT WITH MOVING PARTS  
TO AVOID PERSONAL INJURY  
DO NOT TOUCH MOVING PARTS  
DO NOT OPERATE WITH GUARD REMOVED  
SEE MANUAL FOR ADDITIONAL INFORMATION

5-22907-01

5-22907-01

CHAMPION  
MOTOR OIL  
SAE 15W-40

CHAMPION  
MOTOR OIL  
SAE 15W-40



**WARNING**

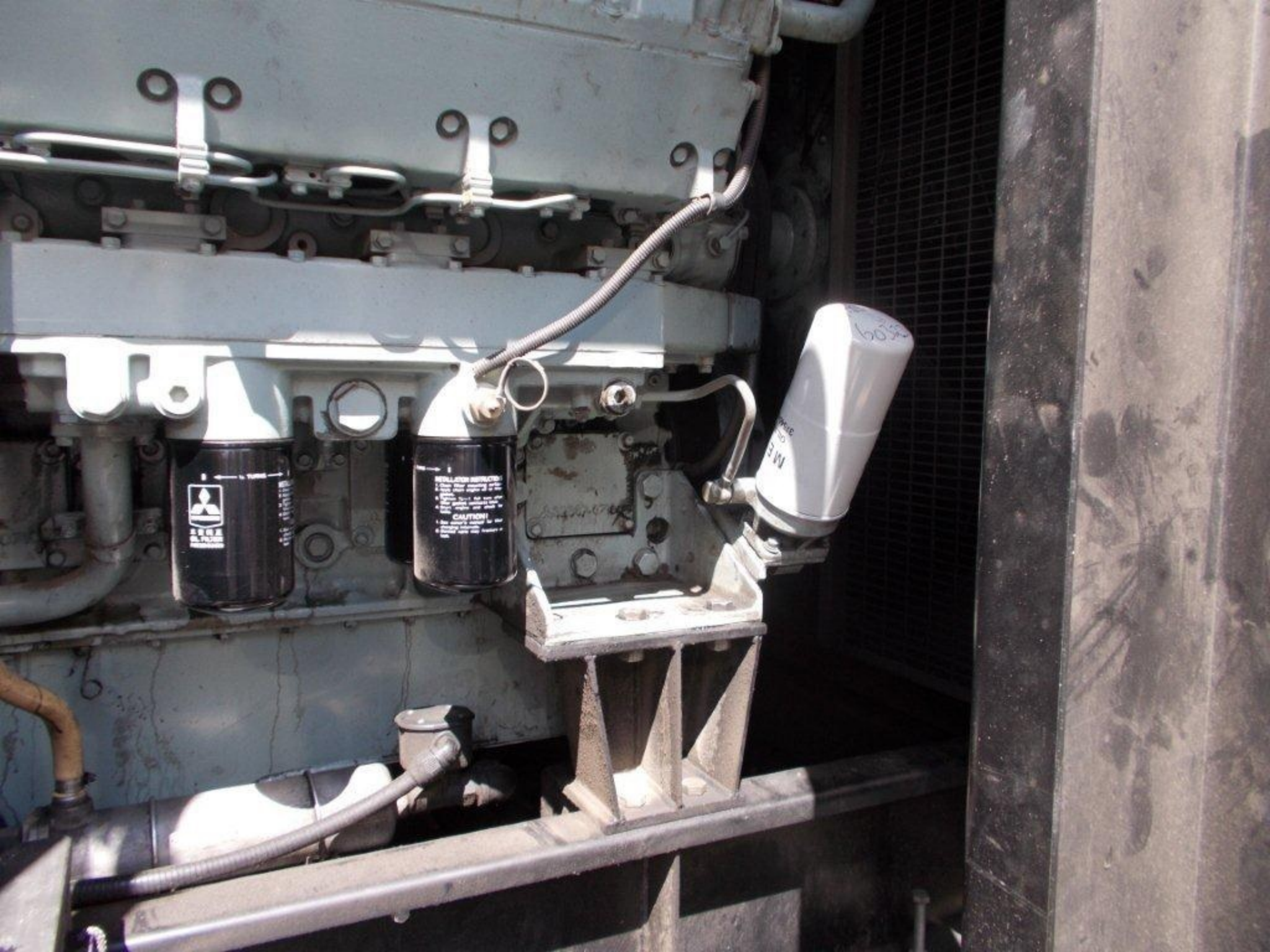
CAUTION: THIS  
EQUIPMENT IS NOT  
TO BE USED IN  
A MANNER WHICH  
MAY BE DANGEROUS  
TO THE OPERATOR  
OR OTHER PERSONS.  
READ THE OPERATING  
INSTRUCTIONS  
FOR THIS EQUIPMENT  
BEFORE USING IT.

A-88807-100

ES2800-100



PLEASE READ INSTRUCTIONS  
FOR PROPER USE OF THIS  
EQUIPMENT. THIS EQUIPMENT  
IS NOT TO BE USED IN A  
MANNER WHICH MAY BE  
DANGEROUS TO THE OPERATOR  
OR OTHER PERSONS.  
READ THE OPERATING  
INSTRUCTIONS FOR THIS  
EQUIPMENT BEFORE USING IT.



# GENERA

MODEL	573RSL4035		
SERIAL	WA-527263-0301		
FRAME	573	RPM	1800
PH	3	HZ	60
ENCL.	OPEN		AM
INS.CLASS	H1	RISE BY RE	
FIELD AMPS	2.2	FIELD VOLT	

---

CONTINUOUS

# GENERAC

573RSL4035

A-527263-0301

TYPE RSL

73

RPM 1800

HZ 60

PF 0.8

EN

AMB. 40 °C

H1

RISE BY RES. 150 °C

.2

FIELD VOLTS 55

CONTINUOUS

---

KW

VOLTS

KVA

AMPS

STANDBY SERVICE

GREASING INSTRUCTIONS

LUBRICATE GENERATOR EVERY 5600 OPERATING HOURS OR ANNUALLY WITH 2.6 CUBIC INCHES OF CHEVRON SRI OR EQUIVALENT GREASE WITH A TEMPERATURE RANGE OF  $-30^{\circ}\text{C}$  TO  $175^{\circ}\text{C}$



WAUSAU, WISCONSIN 54401

B-512052









GENERAC  
POWER SYSTEMS

GENERAC  
POWER SYSTEMS





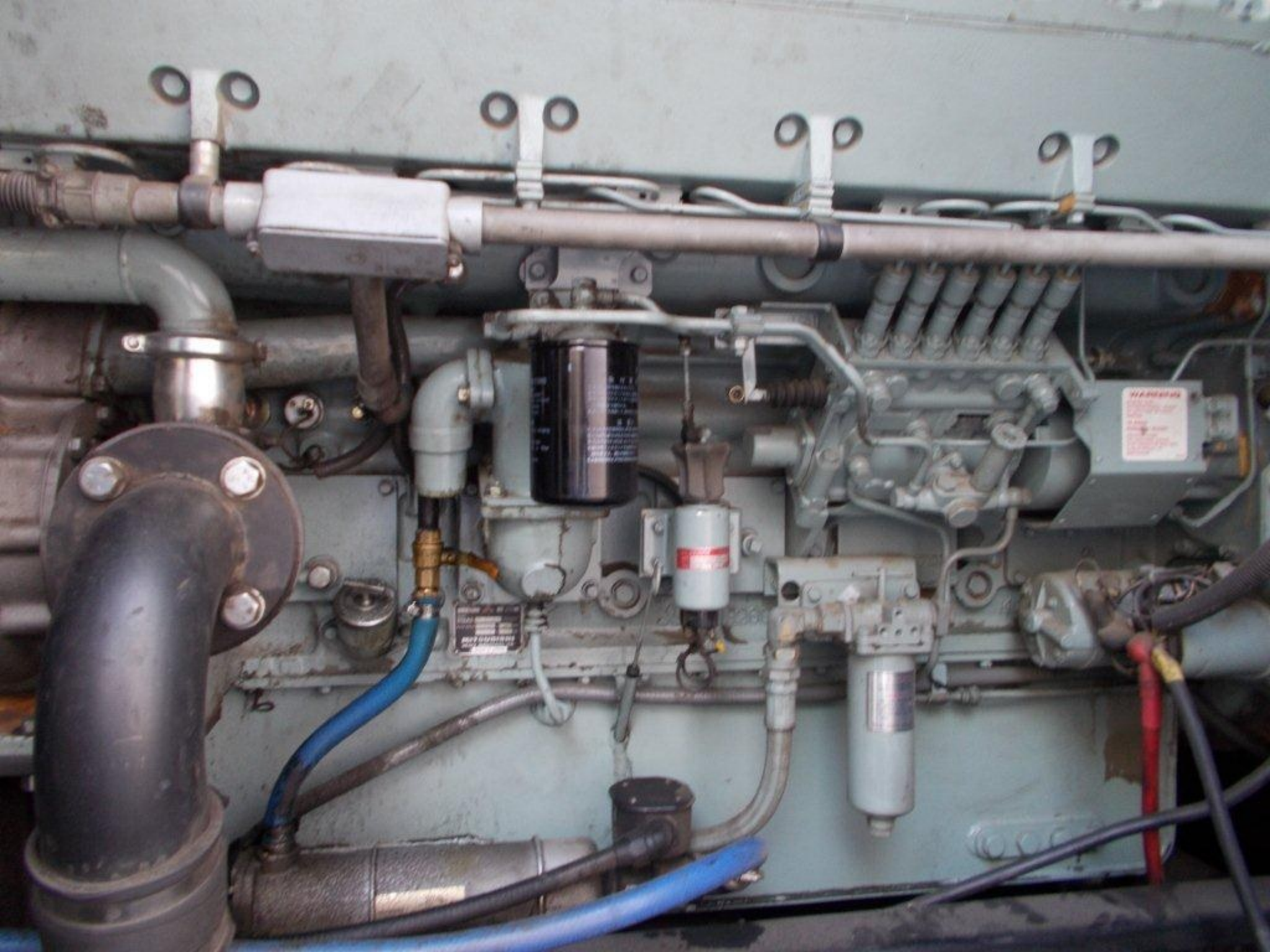


CAUTION - FAN

[Blank white label]

[Small white label with illegible text]







**GENERAC**  
POWER SYSTEMS

**GENERAC**  
POWER SYSTEMS

