

W

W

A

U

K

E

S

H

A



WAUKESHA

WAUKESHA



MOTOR CO

MADE IN U.S.A.

WAUKESHA MOTOR COMPANY
WAUKESHA, WISCONSIN, U.S.A.

DIESEL
ENGINE

MODEL L5792DSU

SIZE 8 1/2 X 8 1/2

SPEC G-32499

SERIAL 288068

GOV. SPEED 1200 LD

ENGINE SERIAL

10-8
10-8
10-8



KESHA

W

DIESEL
ENGINE

MODEL L57920SU

8-17289 1/2

6-32737

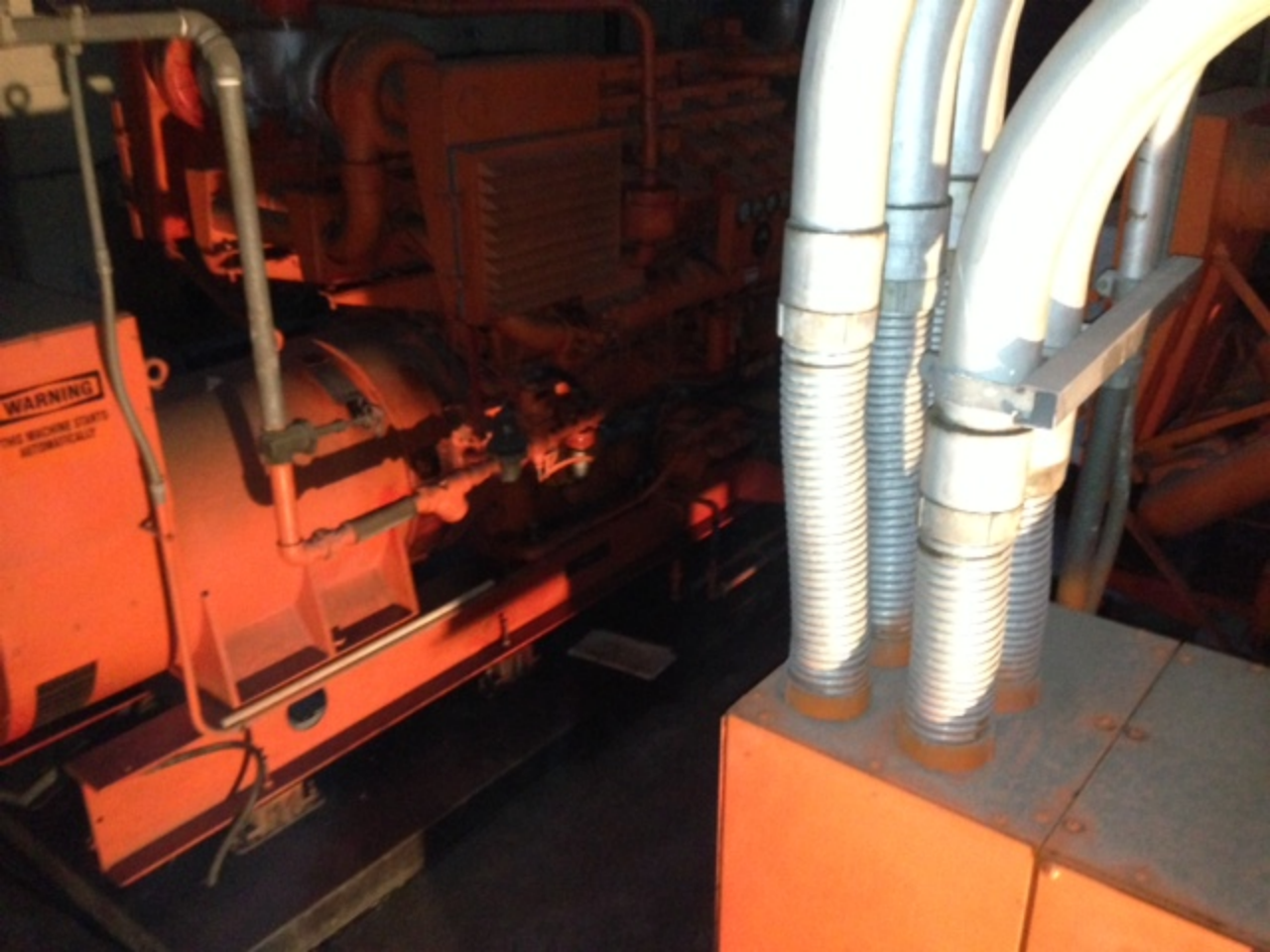
279784

1200 LD

COMPANY
U.S.A.

ENGINE
SERIAL NO. 1200 LD
DATE OF MANUFACTURE
FACTORY NO.

WARNING
THE MACHINE COASTS
AUTOMATICALLY



**SESEL
ENGINE**

17921

**ENGINE FIRING
ORDER**

R-6L-5R-2L-3R-4L-6R-1L-2R-5L-4R-3L
RIGHT BANK AND LEFT BANK ARE
DETERMINED STANDING AT FLYWHEEL
END OF ENGINE FACING FLYWHEEL

WAUKESHA MOTOR COMPANY
WAUKESHA, WISCONSIN, U.S.A. 53184





WAUKESHA



DIESEL
ENGINE

15792091

8 1/2 x 1 1/2

6-32737

279091

1200 LB

WAUKESHA MOTOR COMPANY
WAUKESHA, WISCONSIN, U.S.A.



ENGINE

MODEL L5792DSU

SIZE 8 1/2 X 8 1/2

SPEC. G-32737

SERIAL 279784

GOV
SPEED 1200 LD

FOR COMPANY
U.S.A.





LINCOLN

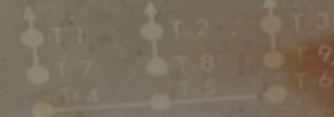


A.C. MOTOR

TEFC

FRAME	234T	RPM	1750	SERIAL	144
HP	15	PHASE	3	INS	B
VOLTS	230/460	AMPERE	40/20	MAX AMB	40
HERTZ	60	SERVICE FACTOR	1.0	TIME RATING	CONT.
LINCOLN CODE	T- 2553			NEMA CODE	6 NEMA DESIGN

LOW VOLTAGE LINE



HIGH VOLTAGE LINE



THE LINCOLN ELECTRIC CO

CLEVELAND OHIO

MADE IN U.S.



WAUKESHA
ENGINEATOR

MODEL NO. _____

SERIAL NO. _____

SPEC. NO. _____

R.P.M. _____

ENGINE _____

SERIAL NO. _____

SPEC. NO. _____

GENERATOR

PART NO. _____

PE1818AA

SERIAL NO. _____

274905211

KW _____

965

VOLTS _____

480/277

KVA _____

1262.5

AMPS _____

1628

PHASE _____

3

P.F. _____

0.8

Hz _____

60

VOLTAGE REGULATOR

PART NO. _____

PE1818AA

SERIAL NO. _____

LINCOLN



A.C. MOTOR

FRAME 254T

RPM 1750

SERIAL 144977

HP 15

PHASE 3

INS B

VOLTS 230/460

AMPERE 48/20

MAX
AMB 40

HERTZ 60

SERVICE
FACTOR 1.0

TIME
RATING

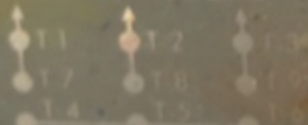
CONT.

LINCOLN
CODE T- 2556

NEMA
CODE B

NEMA
DESIGN B

LOW VOLTAGE LINE



THE LINCOLN ELECTRIC CO

CLEVELAND OHIO

MADE IN U.S.A.



**WAUKESHA
ENGINEATOR**

MODEL NO.
SERIAL NO.
SPEC. NO.
P.F.M.

ENGINE
SERIAL NO.
SPEC. NO.

GENERATOR

PART NO. BE10114
SERIAL NO. 2740052100

KW 1065 VOLTS

KVA 1200.5 AMPS

PHASE 3 P.F.

Hz

VOLTAGE REGULATOR

PART NO. BE1013AA

SERIAL NO.

**WAUKESHA
POWER SYSTEMS**

DRESSER



151

Control panel with multiple indicator lights and labels:

- Row 1: 7 indicator lights with labels: "AIR FLOW", "AIR FLOW", "AIR FLOW", "AIR FLOW", "AIR FLOW", "AIR FLOW", "AIR FLOW".
- Row 2: 7 indicator lights with labels: "AIR FLOW", "AIR FLOW", "AIR FLOW", "AIR FLOW", "AIR FLOW", "AIR FLOW", "AIR FLOW".
- Row 3: 7 indicator lights with labels: "AIR FLOW", "AIR FLOW", "AIR FLOW", "AIR FLOW", "AIR FLOW", "AIR FLOW", "AIR FLOW".
- Row 4: 3 indicator lights with labels: "AIR FLOW", "AIR FLOW", "AIR FLOW".



Control panel with three rotary switches and a central label:

- Three rotary switches are arranged horizontally.
- A central label reads: "WARNING - HIGH VOLTAGE - DO NOT TOUCH".

70

Control panel with a single rotary switch and a label:

- A single rotary switch is mounted.
- A label below it reads: "AIR FLOW".

Control panel with a large rectangular display or window:

- A large rectangular window or display is mounted in the center.
- A label below it reads: "AIR FLOW".

div

Control panel with a large handle and a label:

- A large handle is mounted.
- A label below it reads: "AIR FLOW".



Control panel with a rotary switch and a label:

- A rotary switch is mounted.
- A label below it reads: "AIR FLOW".

Control panel with a rotary switch and a label:

- A rotary switch is mounted.
- A label below it reads: "AIR FLOW".

Control panel with a rotary switch and a label:

- A rotary switch is mounted.
- A label below it reads: "AIR FLOW".

div

Control panel with a rotary switch and a label:

- A rotary switch is mounted.
- A label below it reads: "AIR FLOW".

Control panel with a series of indicator lights:

- A series of indicator lights are mounted vertically.

WHEN ROTATED IN THE
DIRECTION INDICATED,
FOR PROPER PERFORMANCE
WITH OPPOSITE ROTATION
CHANGE THE BLOWER AND
CHECK THE ROTOR BALANCE

126A704F01

WAUKESHA ENGINEATOR®

MODEL NO. VHP5000S

SERIAL NO. RU17364

SPEC. NO. E1918

R.P.M. 1200

ENGINE 15792DS

SERIAL NO. 288068

SPEC. NO. 632499

GENERATOR

PART NO. 6F181A01

SERIAL NO. 270052ED

KW _____ VOLTS _____

KVA _____ AMPS _____

PHASE _____ P.F. _____

Hz _____

VOLTAGE REGULATOR

PART NO.

SERIAL NO.

WAUKESHA
POWER SYSTEMS



WARNING
This instrument panel is not to be used for any other purpose than that for which it was designed. It is not to be used for any other purpose than that for which it was designed. It is not to be used for any other purpose than that for which it was designed.

W A U K E S I







A large, orange industrial generator is shown in a dimly lit room. The generator is mounted on a metal frame and features a prominent warning label on its left side. The label reads "WARNING" in a bold, black box, followed by the text "THIS MACHINE STARTS AUTOMATICALLY". The generator is connected to various pipes and hoses, and a red tag is attached to one of the pipes. The background shows a dark, industrial setting with some equipment and a blue tarp on the floor.

WARNING

THIS MACHINE STARTS
AUTOMATICALLY

WUKESHA
ENGINATOR

MODEL NO. _____
SERIAL NO. _____
SPEC. NO. _____
R.P.M. _____

ENGINE _____
SERIAL NO. _____
SPEC. NO. _____

GENERATOR
PART NO. _____
SERIAL NO. _____
KW _____ VOLTS _____
KVA _____ AMPS _____
PHASE _____ P.F. _____
Hz _____

VOLTAGE REGULATOR
PART NO. _____
SERIAL NO. _____



WUKESHA ENGINE DIVISION - DRESSER INDUSTRIES INC.
WUKESHA, WISCONSIN 53186

ANTI-FRICTION

WAUKESHA GENERATOR

MODEL NO. _____
SERIAL NO. _____
SPEC. NO. _____
R.P.M. _____

ENGINE 1578295
SERIAL NO. 271734
SPEC. NO. 632737

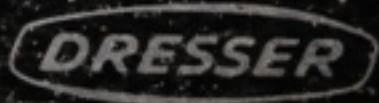
GENERATOR

PART NO. 4959226
SERIAL NO. 174905211
KW 965 VOLTS 480Y/277
KVA 1262.5 AMPS 1898
PHASE 3 P.F. 0.8
Hz 60

VOLTAGE REGULATOR

PART NO. 4959226
SERIAL NO. _____

**WAUKESHA
POWER SYSTEMS**



WARNING

THIS MACHINE STARTS
AUTOMATICALLY

