

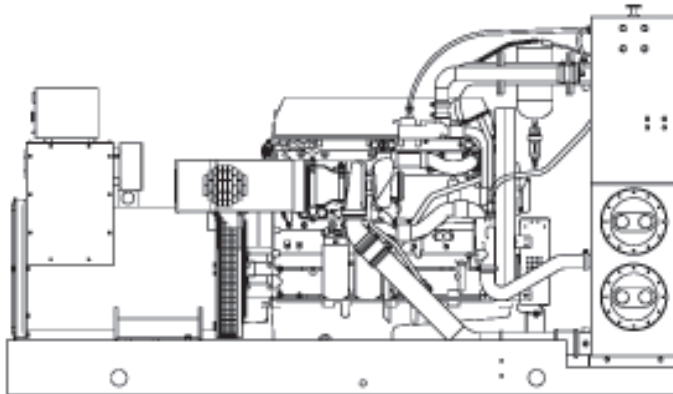
IMPROVED

MODEL: 360P5 50Hz

KOHLER POWER SYSTEMS

Diesel

ISO 9001
KOHLER
POWER SYSTEMS
NATIONALLY REGISTERED



High fuel efficiency up to
4.3kWh / litre of diesel at
75% load.

Standard Features

- Kohler Co. provides one-source responsibility for the generating system and accessories.
- A one-year limited warranty covers all systems and components. Two-, five- and ten-year extended warranties are available.
- Heat Exchanger cooling system.
- Generator features:
 - Brushless, rotating-field generator has broadrange reconnectability.
- Other features:
 - Controllers are available to meet all applications. See controller features inside.
 - Low coolant level shutdown protects generator set from overheating.
 - Integral vibration isolation eliminates the need for installation of vibration spring isolators under the unit.
 - Electronic, isochronous governor provides precise frequency regulation.
 - Electronic engine controls and a generator microprocessor controller combine to make one of the most advanced control systems in today's generator market.

Generator Output Ratings

Model	Voltage	Ph	Hz	Prime Rating (125°C Rise)
				kW / kVA
360P5	380 - 416	3	50	288 / 360

Dimensions & Weights

Model	Dimension, L x W x H, mm	Weight, Kg (lb), Dry
360P5	3140 x 1090 x 1930	2900 (6380)

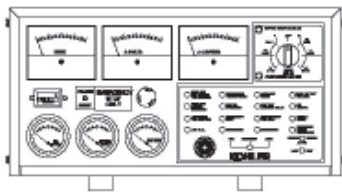
NOTE: Dimensions are provided for reference only and should not be used for planning installation. Contact your local distributor for more detailed information.

Ratings: PRIME RATING: Operating continuously for unlimited hours on a varying load of 75% load factor. No overload rating allowed. Altitude: Derate 0.5% per 305 m (1000 ft) elevation above 1525 m (5000 ft.) up to a maximum elevation of 3660 m (12000 ft.). Temperature: Derate 1.0% per 5.5°C (10°F) temperature above 40°C (104°F). Fuel consumption is calculated at specific gravity of 0.85 (±5%). Cooling air density taken as 1.20kg/m³.

Application Data

Available Cooling System		Operation Requirements	
Cooling System (Heat Exchanger)	50Hz	Air Requirements	50Hz
Ambient temperature, °C (°F)	50	Radiator-cooled cooling air, m ³ /min. (scfm) [†]	N.A.
Engine jacket water capacity, L (gal)	23 (6.1)	Combustion air, m ³ /min (cfm)	24.8 (876)
Engine jacket water flow, Lpm (gpm)	302.4 (80)	Heat rejected to ambient air:	
Heat rejected to cooling water, at rated kW (Btu/min)	121.3 (6900)	Engine kW (Btu/min)	43.9 (2500)
Heat rejected to air charge cooler kW (Btu/min)	65.0 (3700)	Generator kW (Btu/min)	19.4 (1108)
Water pump type	Centrifugal	[†] air density = 0.075 lbm/ftS or 1.20 kg/m	
Max. permissible ext. rest. in CAC circuit, kPa (in Hg)	10.1 (3.0)	Fuel Consumption	50Hz
Max. permissible ext. rest. in JW circuit, kPa (in Hg)	5.07 (1.5)	Diesel, Lph (gph) at % load	Prime Rating
Temperature of raw water available, °C (°F)	32 (89.6)	100%	71.8 (19.0)
Raw water flow rate through JW cooler, Lpm	200	75%	54.4 (14.4)
Raw water flow rate through CAC cooler, Lpm	160	50%	37.4 (9.9)
		25%	20.8 (5.5)

Controller



Decision-Maker™ 3+, 16-Light

Decision-Maker™ 3+, 16-Light Controller

Audiovisual annunciation with NFPA 110 Level 1 capability. Microprocessor logic, AC meters, and engine gauge features. 12- or 24-volt engine electrical system capability. Remote start, prime power, and remote annunciation options.

KOHLER CO., Kohler, Wisconsin 53044 USA
Phone 920-565-3381, Fax 920-459-1646
For the nearest sales and service outlet in the
US and Canada, phone 1-800-544-2444
KohlerPowerSystems.com

Kohler Power Systems
Asia Pacific Headquarters
7 Jurong Pier Road
Singapore 619159
Phone (65) 6264 6422 Fax (65) 6264 6455
www.kohler.com.sg

Accessories

Enclosed Unit

- Weather Housing
- Acoustic Housing
- Containerized Set

Open Unit

- Exhaust Silencer, Residential
- Flexible Exhaust Connector, Stainless Steel

Cooling System

- Block Heater
- Radiator Duct Flange

Fuel System

- Day Tanks
- Flexible Fuel Lines
- Fuel Pressure Gauge
- Subbase Fuel Tanks

Electrical System

- Battery
- Battery Charger, Equalize / Float Type
- Battery Charger, Trickle Type
- Battery Rack and Cables (standard)

Engine and Generator

- Air Cleaner, Heavy Duty
- Air Cleaner Restriction Indicator
- Generator Strip Heater
- Line Circuit Breaker
- Line Circuit Breaker with Shunt Trip

Paralleling System

- Load-Sharing Module
- Reactive Droop Compensator
- Voltage Adjust Potentiometer
- Voltage Regulator Relocation Kit

Maintenance

- General Maintenance Literature Kit
- Maintenance Kit (includes air, oil and fuel filters)

Controller (Decision-Maker™ 3+)

- Common Failure Relay Kit
- Controller Cable, 40ft (12m)
- RS-232 or RS-485 Communication Module
- Dry Contact Kit (Isolated Alarm)
- Engine Prealarm Sender Kit
- Run Relay Kit

Miscellaneous Accessories

- _____
- _____
- _____
- _____
- _____
- _____
- _____
- _____
- _____

Kohler Co. reserves the right to change the design or specifications without notice and without any obligation or liability whatsoever.

Distributed by: