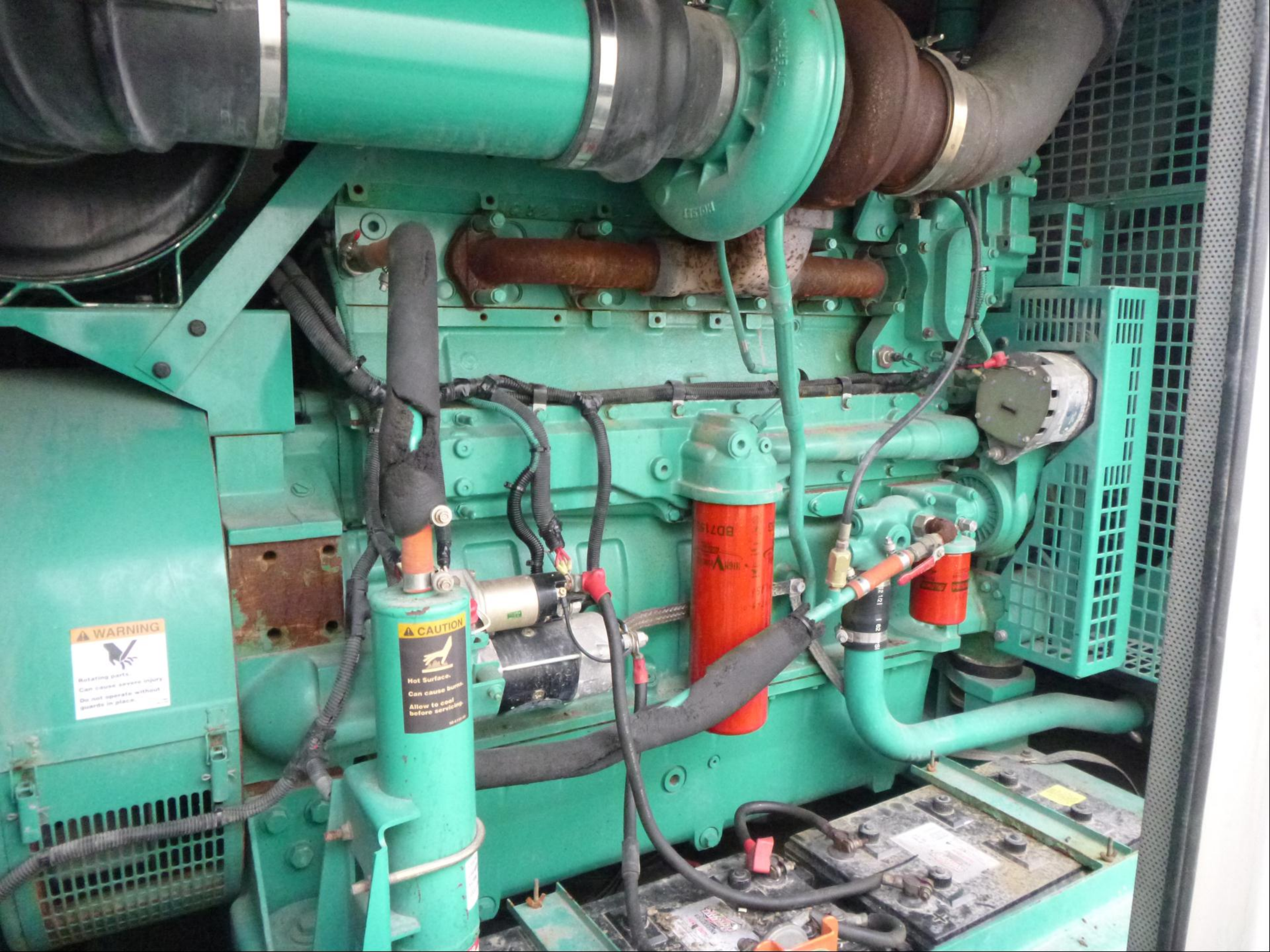


WARNING
Rotating parts.
Can cause severe injury.
Do not operate without
guards in place.

CAUTION
Hot Surface.
Can cause burns.
Allow to cool
before servicing.



⚠ DANGER
Hazardous voltage
Will cause severe injury or death.
Do not operate generator and
equipment that require its power.

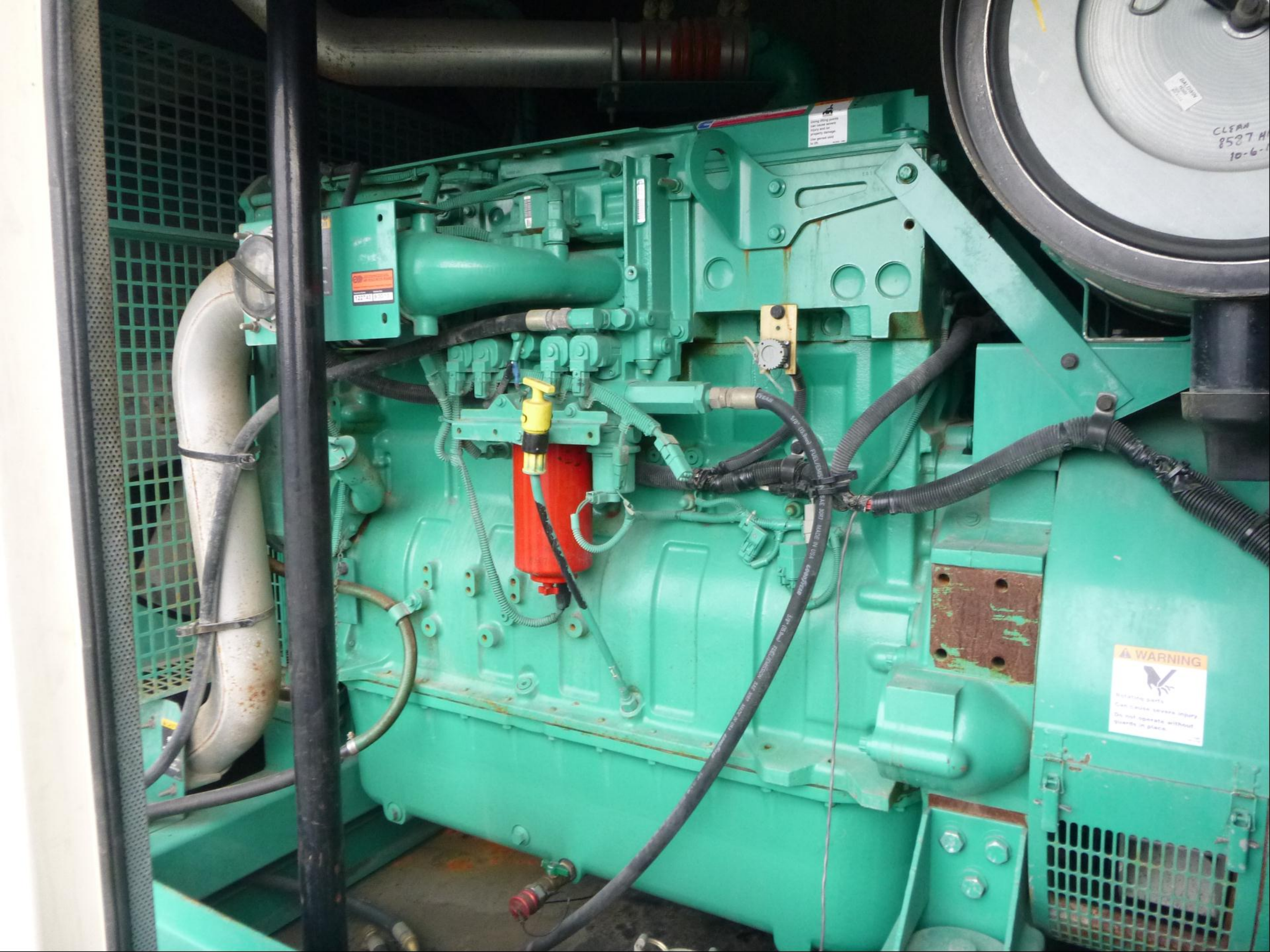


⚠ WARNING
Hazardous voltage
Presented in utility system
and/or equipment
or property damage.
Disconnect all loads
connected to system
before opening or
closing main disconnect
switch.
Do not operate generator and
equipment that require its power.

**Leave
800 AMP
Main Disconnect
on at all times**

⚠ DANGER
Hazardous voltage
Will cause severe
injury or death.
Disconnect all
electrical supply
sources before
servicing.





Always follow safety
instructions before
starting and do
not tamper with
the engine.

CO
12548151000

HALLOW
CLEAN
8527 H
10-6-

WARNING
Rotating parts
Can cause severe injury
Do not operate without
guards in place.

5/8" (16mm) FUEL LINE
BAE 3000 MADE IN USA
1/2" (12mm) ELECTRICAL WIRE
1/2" (12mm) AIR LINE

IMPORTANT ENGINE INFORMATION:

This engine conforms to U.S. EPA and California 2004 Tier 2 regulations for heavy duty nonroad compression ignition diesel cycle engines as applicable.

FOR CONSTANT SPEED USE ONLY.

THIS ENGINE IS CERTIFIED TO OPERATE ON DIESEL FUEL.

3 IN 3 Date of Mtg. 08/04 | Warranty Start Date



California Environmental Protection Agency

AIR RESOURCES BOARD

Statewide Portable Equipment Registration Program

Registration Number:

122740

Expiration Date:

9/30/13