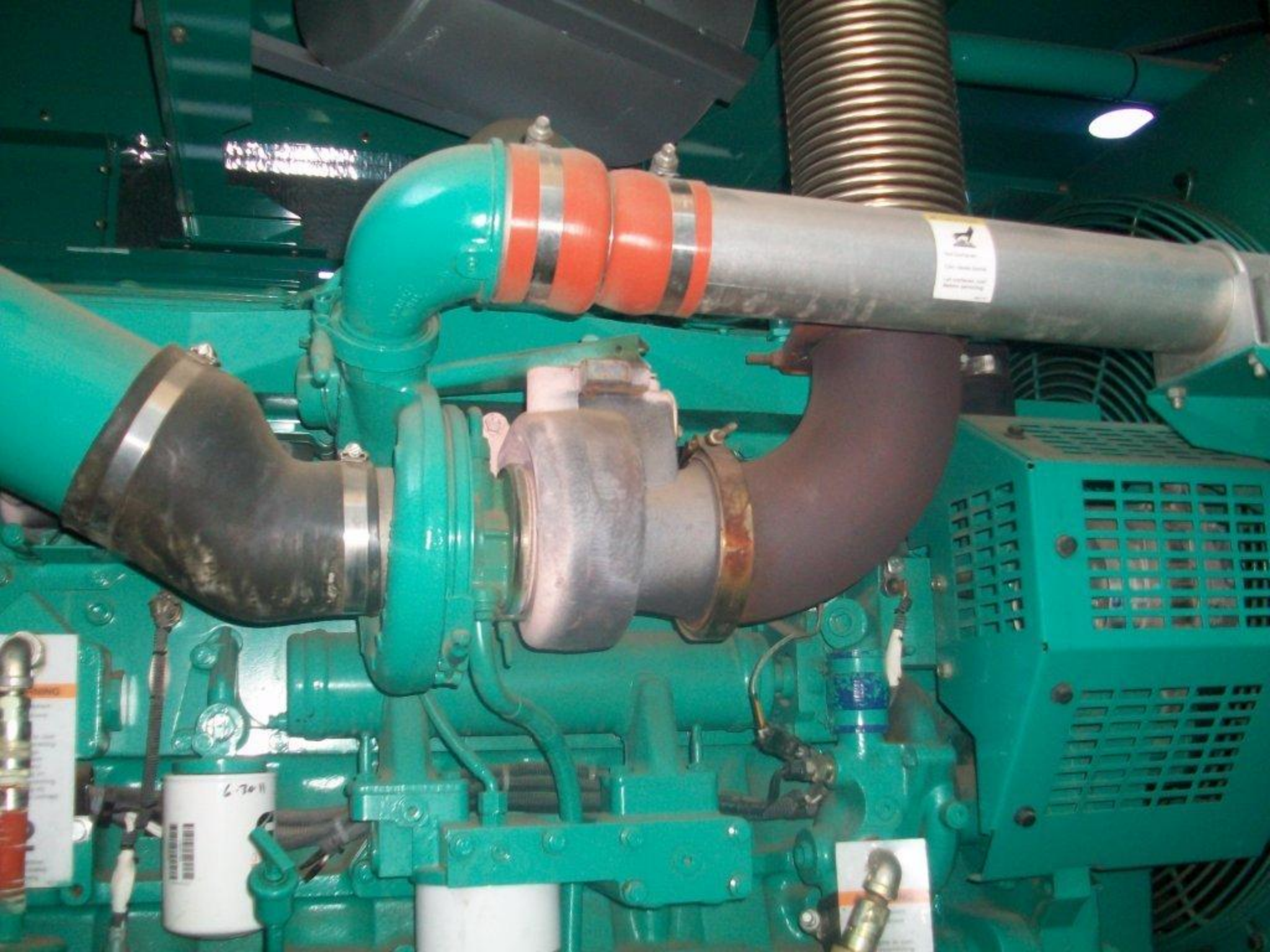


Cummins **QSM11**







WARNING

DO NOT TOUCH THE HOT SURFACE OF THE GENERATOR OR MOTOR. IT IS VERY HOT. IT CAN BURN YOU. ALWAYS WEAR PROTECTIVE GEAR.



CM570

P/N 3408501

S/N 30060021

D/C 05152003

ESN 35079858

E/C L21296.02

GOV

SC



Power
Generation





**Power
Generation**

OFF

0A

Model No. **DQAD-5620183**
Modele

Serial No. **E030504026**
Serie

Spec. **B**

IMPORTANT!

Model & Serial No. Required When Ordering Parts.
Modele & No. Serie Requis. Four Commander Des Pieces. **99-2433**

CUMMINS POWER GENERATION

1400 73RD AVE. N.E.

MINNEAPOLIS, MN 55432 U.S.A.

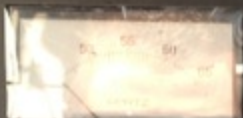
MADE IN U.S.A.

FREQUENCY SERVICE RATING PHASE	60 HZ			
	STANDBY		PRIME	
	1PH	3PH	1PH	3PH
RATED KW	0.0	250.0	0.0	0.0
POWER FACTOR	0.0	0.8	0.0	0.0
RATED KVA	0.0	312.5	0.0	0.0
I2 CAPABILITY CONNECTION	8pct WYE			

BATTERY	VOLTS	AMPS	AMPS
24 VDC	120/ 208	867.4	
	120/ 240	751.8	
	127/ 220	820.1	
ROTATING	133/ 230	784.5	
SPEED	139/ 240	751.8	
1800RPM	240/ 416	433.7	
	255/ 440	410.1	
NOMINAL	266/ 460	392.2	
RATED	277/ 480	375.9	

INSUL:
CLASS H
AMB 40C

PowerCommand



- Non-Automatic
- Warning
- Shutdown

To reset control after shutdown: Turn selector switch to the "Off" position and press the "Reset" button.



Reset

Menu



Panel Lights

- Upper Scale
- Lower Scale

Voltage Amps

2.0

1.0

- L1-L2 L1-L2 1.1
- L2-L3 L1-L2 1.2
- L3-L1 1.3

Phase Select

WARNING

Operation, maintenance, and service present risk of property damage, personal injury, death, or equipment failure. Read and understand all safety instructions identified by state or federal agencies as covering generator or related equipment.

Always start and operate this engine in a well-ventilated area. If operating in an enclosed area, vent the exhaust to the outside. Do not modify or tamper with the exhaust system, or the emission control system.

See Operator's or Service Manual for important safety and health warnings and instructions. 0888-9019-0230

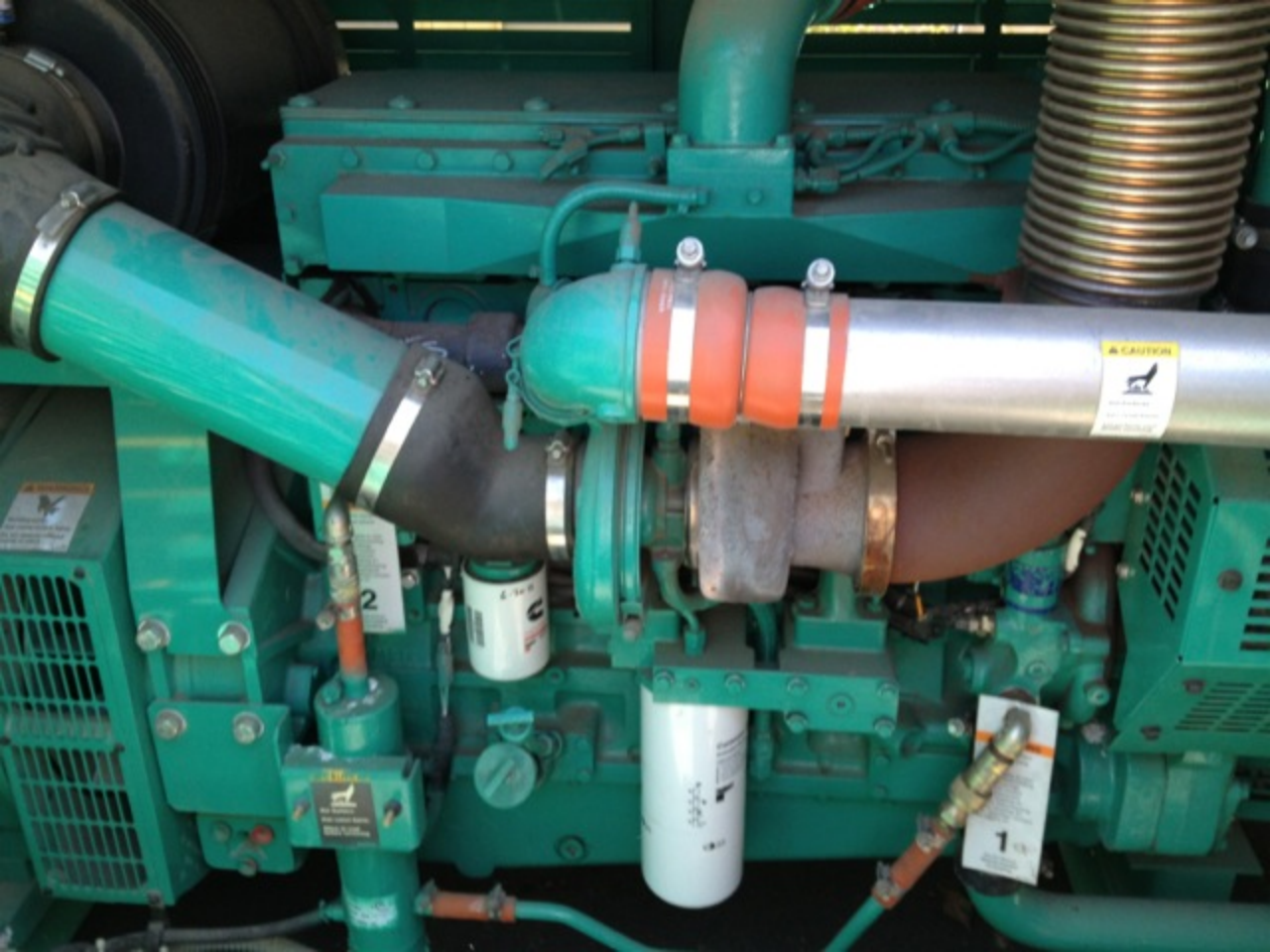
Run Off Auto



This product is covered by the following IP patents: 6,828,000; 6,828,001







CAUTION



WARNING
DO NOT TOUCH
HOT SURFACES

2

1-100

CAUTION



WARNING
DO NOT TOUCH
HOT SURFACES

1

Engine No. 35079858

Family 3CEXL0661AAD

Model QSM11-G1

Date of Mfg. 05/03

Fuel rate at rated Power 217

Inj. Set in/mm .025 LASH

Ref. No. 100-3663-03

$\frac{\text{mm}^3}{\text{stroke}}$

Prin

Valve

LISTED **LABORATORIES INC.®**

SECONDARY CONTAINMENT GENERATOR BASE TANK NO. A-799435

5029030

our.
our.
our.
our.
ur.

Part #: 159-1486-73
Serial #: ODT-26696
Order #: 103493
Date of Manufacture: 12-13-02

Tank Type: SECONDARY CONTAINMENT
Containment:
Capacity: 520 GAL
Height: 30"

5029028

TRAMONT CORPORATION

NO. 10 99 2

