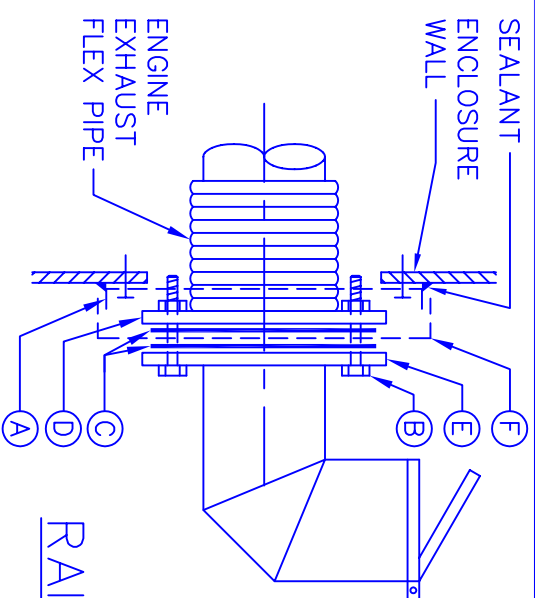


## STANDARD EXHAUST SYSTEM KEYNOTES

- (A) - RAIN COLLAR, RIVETED/SCREWED TO ROOF WITH SILICONE SEALER AROUND PERIPHERY
- (B) - RAIN SHIELD
- (C) - GASKETS (2)
- (D) - EXHAUST FLEX FLANGE
- (E) - MUFFLER INLET FLANGE WITH RAIN CAP
- (F) - BOLTS/NUTS/WASHERS/LOCK WASHERS



## RAIN COLLAR/SHIELD INSTALLATION

### DESCRIPTION

**DESCRIPTION:**

TWO (2) WEATHER PROTECTIVE SOUND ATTENUATED DROP OVER WALK IN TYPE ENCLOSURES WITH BASES AND BUILT IN UL-142 LISTED 450 GALLON BASE DAY TANKS WITH RUPTURE TANKS FOR 1,500-KW DQGAB CUMMINS DIESEL GENERATOR SETS. ENCLOSURES TO REDUCE IN FREE FIELD GENERATOR NOISE TO 75 DB/A AT 3 FEET FROM ENCLOSURE IF GENERATOR NOISE DOES NOT EXCEED 101 DB/A AT 23 FEET FROM GENERATOR.

**AIR INTAKE:**

EXTERNAL SOUND ABSORBER HOOD WITH BIRD SCREEN, INTERNAL SOUND ABSORBER BAFFLE SYSTEM WITH MOTOR OPERATED DAMPER FOR 65,045 CFM COOLING AND COMBUSTION AIR, WITH A VELOCITY OF 950 FEET PER MINUTE

**AIR EXHAUST:**

EXTERNAL SOUND ABSORBER HOOD WITH BIRD SCREEN, INTERNAL SOUND ABSORBER BAFFLE SYSTEM WITH GRAVITY LOUVER FOR RADIATOR DISCHARGE.

**MISCELLANEOUS:**

MUFFLER BRACKETS, MUFFLER STRAPS, RAIN COLLAR AND RAIN SHIELD FOR INTERNAL INSTALLATION OF ASI SUPPLIED MUFFLER. RADIATOR CAP ACCESS. VENT FROM BASE TANK TO OUTSIDE OF ENCLOSURE, ELECTRICAL STUB UP IN BASE, INSULATION FOR MUFFLER, FLEX AND EXHAUST PIPE INSIDE ENCLOSURE. 4GPM 1/3HP FUEL SINGLE FUEL TRANSFER PUMP. LIMITED 5 YEAR WARRANTY.

ENCLOSURE DIMENSIONS: 336" LONG x 138" WIDE x 132" HIGH  
DIMENSIONS OVERALL: 548" LONG x 138" WIDE x 146" HIGH

**EXTERIOR:**

FOURTEEN (14) GAUGE (.063) WHITE OR BRONZE BAKED ENAMEL ALUMINUM, FOURTEEN (14) GAUGE (.063) MILL ALUMINUM, OR TWENTY-FOUR (24) GAUGE COLORKLAD GALVANIZED STEEL PANELS IN SIX STANDARD COLORS.

**INTERIOR:**

FOUR INCH BY TWO INCH (4" X 2") STEEL TUBE FRAME PRIMED AND PAINTED, FILLED 100% WITH FOUR INCH (4") SOUND ABSORBING INSULATION WITH A FLAME SPREAD OF 10, FUEL CONTRIBUTING 0 AND SMOKE DEVELOPED 0, COVERED WITH EIGHTEEN (18) GAUGE (.040) MILL FINISHED PERFORATED ALUMINUM

**BASE DESCRIPTION:**

336" LONG x 138" WIDE x 14" HIGH BUILT FROM 7 GAUGE (3/16") STEEL PLATE, 14" C-CHANNEL, AND 7 GAUGE (3/16") STEEL DIAMOND PLATE FLOOR; WITH ELECTRICAL STUB-UP AREA(S), 8 POINT LIFTING RINGS, AND PRIMED AND PAINTED WITH BLACK ENAMEL.

**ACCESS:**

TWO (2) 72" X 72" SOLID DOUBLE DOORS AND (1) 72" X 90" SOLID DOUBLE DOOR WITH PADLOCKING HANDLES, PANIC RELEASE FROM INSIDE OF ENCLOSURE, 3 POINT LATCH, STAINLESS STEEL BUTT HINGES, STAINLESS STEEL DOOR HOLDERS, AND RAIN GUTTERS ABOVE DOORS.

UL-142 LISTED BASE  
DAY TANK AND  
RUPTURE TANK:  
WEIGHT:

450 GALLON INNER TANK: 90"L X 122"W X 11"H  
OUTER RUPTURE TANK: 100" LONG x 132" WIDE x 14" HIGH  
APPROXIMATELY 34,000 LBS. ASI EQUIPMENT ONLY

### REVISED

DATE	INITIAL	DATE	INITIAL
1/7/09	SP		

© 2004, ACOUSTICAL SHEETMETAL, INC.  
ALL RIGHTS RESERVED

NOTE: DRAWINGS ARE THE PROPERTY OF ACOUSTICAL SHEETMETAL INC. AND MAY NOT BE REPRODUCED WITHOUT PERMISSION.

*Project:* TIME WARNER CABLE-HERNDON, VA

WEATHER PROTECTIVE SOUND ATTENUATED DROP OVER WALK IN TYPE ENCLOSURE WITH BASE AND BUILT IN UL-142 LISTED 450 GALLON BASE DAY TANK WITH RUPTURE TANK FOR A 1,500 KW DQGAB CUMMINS DIESEL GENERATOR SET WITH A 2,500AMP FREE-STANDING CIRCUIT BREAKER  
*Scale:* NONE      *Sheet* 5 of 5      *Date:* 12-15-08

### CUSTOMER APPROVAL

CUMMINS POWER SYSTEMS, LLC., APPROVES THE DESIGN AS SHOWN OR INDICATED AND RELEASES THESE DRAWINGS FOR FABRICATION.

SIGNATURE \_\_\_\_\_

DATE \_\_\_\_\_



**Acoustical Sheetmetal**  
2600 PRODUCTION ROAD  
VA BEACH, VA 23454  
PHONE: (757) 456-9720  
FAX: (757) 557-0245

**Incorporated** (757) 557-0245

VIRGINIA BEACH, VA