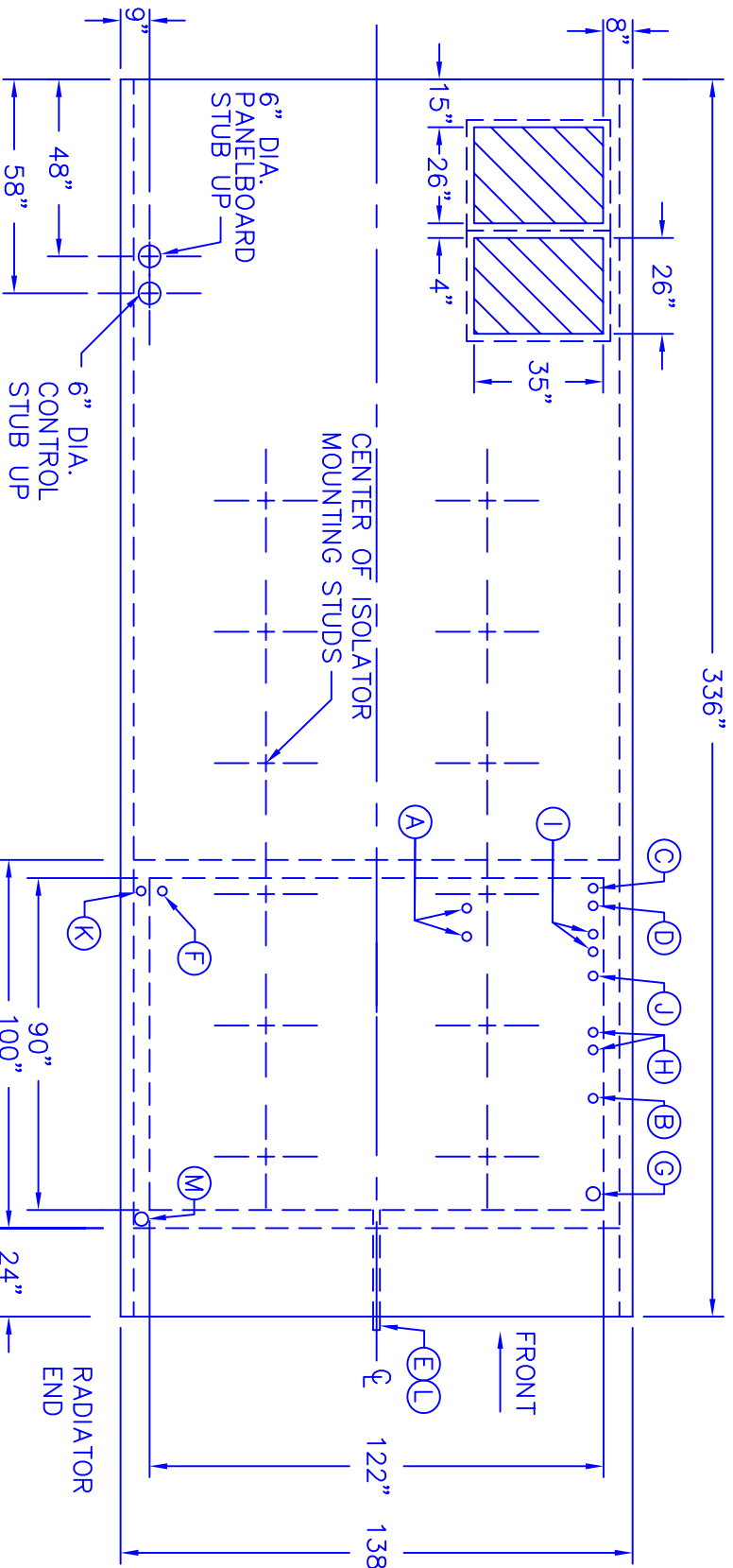


450 GALLON INNER TANK:

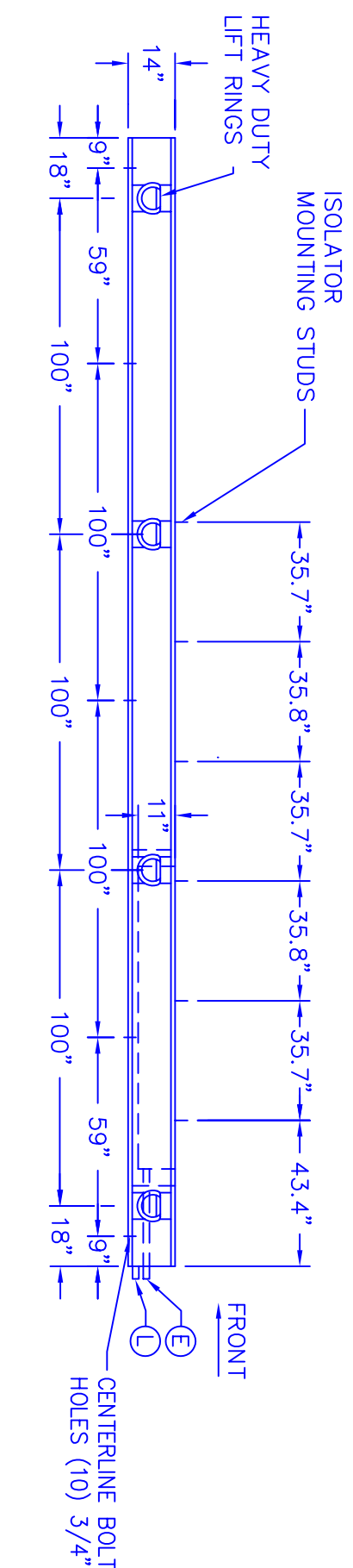
- Ⓐ - 1" GENERATOR PICKUP AND RETURN PIPING
- Ⓑ - 2" VENT TO OUTSIDE FROM ENCLOSURE
- Ⓒ - 1 1/2" MECHANICAL FUEL GAUGE
- Ⓓ - 2" FUEL FILL WITH LOCKABLE CAP
- Ⓔ - 1" DRAIN COUPLING WITH PLUG
- Ⓕ - 1 1/4" HIGH/LOW FUEL ALARM SWITCH
- Ⓖ - EMERGENCY VENT
- Ⓕ - 2" SPARE COUPLINGS
- Ⓛ - 1" FUEL PUMP SUPPLY AND RETURN COUPLINGS
- Ⓜ - 1 1/4" HIGH/LOW SWITCH FOR PUMP OFF/ON
- 150% OUTER RUPTURE TANK:
- Ⓚ - 1 1/4" LEAK ALARM SWITCH
- Ⓛ - 1" DRAIN COUPLING WITH PLUG
- Ⓜ - EMERGENCY VENT

GENERAL NOTES

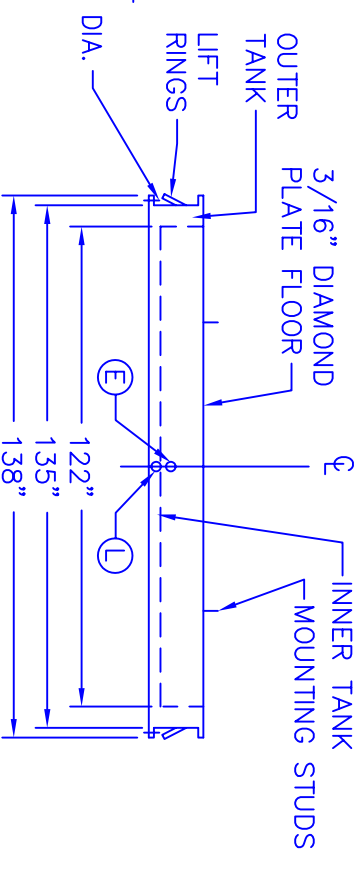
TANK TO BE CONSTRUCTED TO MEET UL LISTED 142 REQUIREMENTS FOR INTEGRITY, PRESSURE, MAINTENANCE AND QUALITY CRAFTSMANSHIP.
 MATERIAL: 3/16" STEEL PLATE AND CHANNEL
 STRENGTH: MEETING ASTM A-36
 WELDERS: CERTIFIED UNDER ASME SECTION IX
 FINISH: PRIMER AND TWO COATS ACRYLIC ENAMEL



TOP VIEW



LEFT SIDE VIEW



FRONT VIEW

NOTE: RIGHT SIDE SIMILAR BUT OPPOSITE HAND

NOTE: ASI RECOMMENDS DRILLING ANCHOR BOLTS HOLES AND PLACEMENT OF ANCHOR BOLTS AFTER UNIT IS LOCATED ON CONCRETE PAD

REVISED

DATE	INITIAL	DATE	INITIAL
12/18/08	MI	2/25/09	MI
1/7/09	SP	3/18/09	MI

© 2004, ACOUSTICAL SHEETMETAL, INC.
 ALL RIGHTS RESERVED

NOTE: DRAWINGS ARE THE PROPERTY OF ACOUSTICALSHEET METAL INC. AND MAY NOT BE REPRODUCED WITHOUT PERMISSION.

Project: TIME WARNER CABLE-HERNDON, VA

WEATHER PROTECTIVE SOUND ATTENUATED DROP OVER WALK IN TYPE ENCLOSURE WITH BASE AND BUILT IN UL-142 LISTED 450 GALLON BASE DAY TANK WITH RUPTURE TANK FOR A 1,500 KW DCGAB CUMMINS DIESEL GENERATOR SET WITH A 2,500AMP FREE-STANDING CIRCUIT BREAKER
 Scale: 1/4"=1'-0" Sheet 4 of 5 Date: 12-15-08

CUSTOMER APPROVAL

CUMMINS POWER SYSTEMS, LLC, APPROVES THE DESIGN AS SHOWN OR INDICATED AND RELEASES THESE DRAWINGS FOR FABRICATION.

SIGNATURE _____

DATE _____

Acoustical Sheetmetal, Incorporated
 2600 PRODUCTION ROAD
 VA BEACH, VA 23454
 PHONE: (757) 456-9720
 FAX: (757) 557-0245