



LN18-4

LN18/1

WARNING
Read the manual before operating this equipment.
Do not touch the engine or other hot parts.
Do not touch the electrical components.
Do not touch the moving parts.
Do not touch the fuel lines.
Do not touch the exhaust system.
Do not touch the cooling system.
Do not touch the oil system.
Do not touch the air intake system.
Do not touch the water system.
Do not touch the battery system.
Do not touch the control panel.
Do not touch the control cables.
Do not touch the control switches.
Do not touch the control buttons.
Do not touch the control knobs.
Do not touch the control levers.
Do not touch the control pedals.
Do not touch the control handles.
Do not touch the control wheels.
Do not touch the control rollers.
Do not touch the control tracks.
Do not touch the control chains.
Do not touch the control sprockets.
Do not touch the control pulleys.
Do not touch the control belts.
Do not touch the control hoses.
Do not touch the control wires.
Do not touch the control cables.
Do not touch the control pipes.
Do not touch the control valves.
Do not touch the control actuators.
Do not touch the control solenoids.
Do not touch the control relays.
Do not touch the control switches.
Do not touch the control buttons.
Do not touch the control knobs.
Do not touch the control levers.
Do not touch the control pedals.
Do not touch the control handles.
Do not touch the control wheels.
Do not touch the control rollers.
Do not touch the control tracks.
Do not touch the control chains.
Do not touch the control sprockets.
Do not touch the control pulleys.
Do not touch the control belts.
Do not touch the control hoses.
Do not touch the control wires.
Do not touch the control cables.
Do not touch the control pipes.
Do not touch the control valves.
Do not touch the control actuators.
Do not touch the control solenoids.
Do not touch the control relays.

www.cumminspower.com



LN18/1

LN18-1

www.combitech.com





LN-18-4

480 VOLTS

CAUTION
Potential Electrical
& Hot Surfaces

Power
Generation

480
VOLTS

www.cumminspower.com

UL 1446 Info.
Newage International LTD
UL File: OBJY2.E195471
Designation: H: UL1446
Factory ID Code: SLP

UL[®] US E305300

SERIAL NUMBER	
PART NUMBER	0249-5108-04
FRAME / CORE	
KVA BASE RATE (BR)	825
KW BASE RATE (BR)	660
HZ	60
RPM	1800
VOLTS	480
PHASE	3
AMPS BASE RATE (BR)	992.3
PF	0.8
RATING	CONT
EX. VOLTS	44
EX. AMPS	2.6
AMBIENT TEMP. °C	40°C
TEMP. RISE °C	125°C
ENCLOSURE	IP23
INSULATION CLASS	H:UL1446
STATOR WDG.	311
STATOR CONN.	Series Star
AVR	NONE

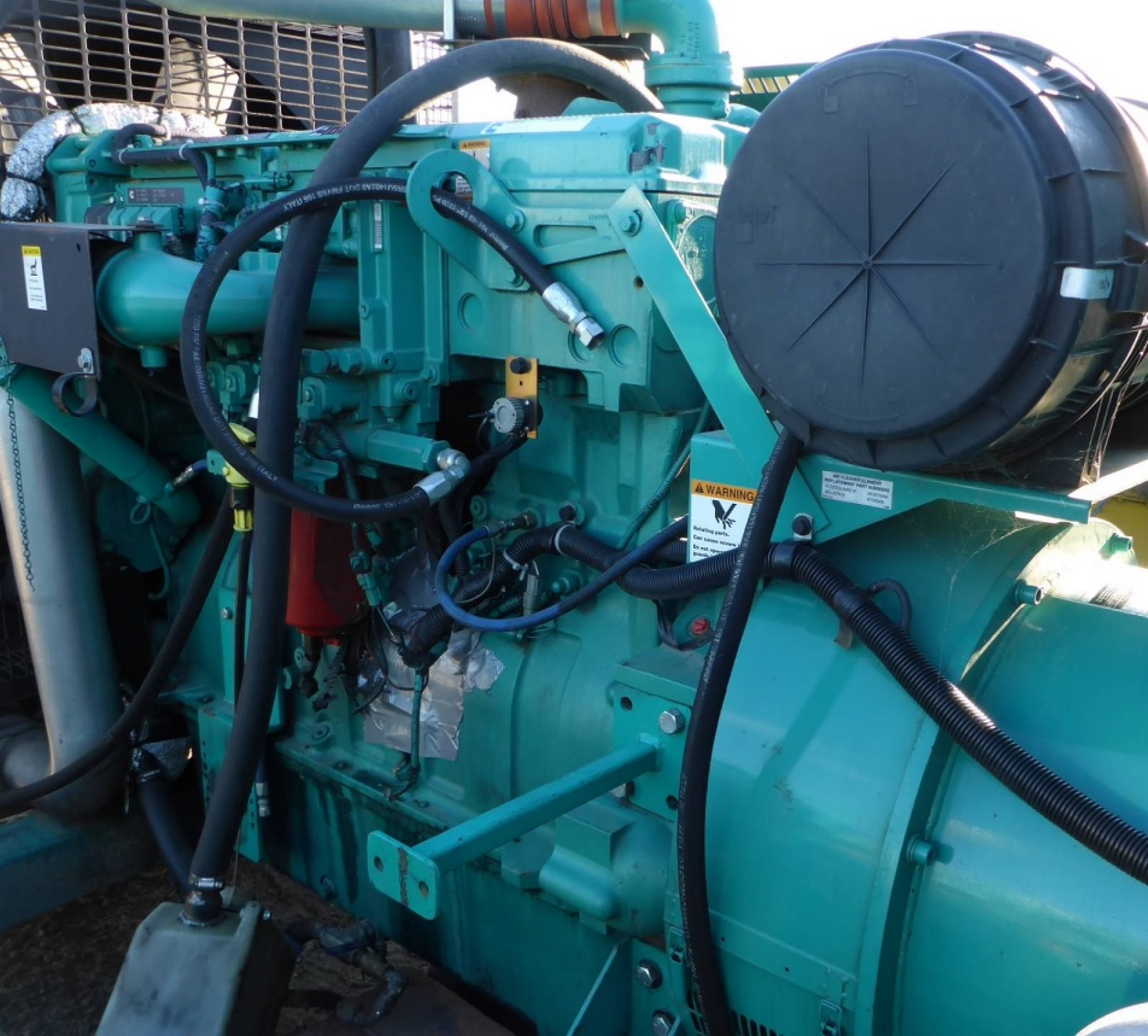
STAMFORD

CIRCUITO MEXICO 185
PARQUE IND. TRES NACIONES
CP 78395 SAN LUIS POTOSI, SLP, MEXICO

WARNING

REFER TO THE INSTRUCTION BOOK BEFORE
FLASH OR MEGGER TEST. RATING
INFORMATION INDICATED HEREIN IS ONLY
APPLICABLE TO THE ALTERNATOR AS
MANUFACTURED. MAY CHANGE FOR
DIFFERENT VOLTAGE CONNECTIONS AND
MAY DIFFER FROM THE GENERATOR SET
RATING.

BS 5000: PART 3 IEC 34-1 ISO 8528-3
NEMA MG 1-32 MADE IN MEXICO



WARNING

Rotating parts.
Can cause severe injury.
Do not operate
guards in place.

30R541402AH D01 64312 DC HT-LLV
Please


Always keep guards
in place when
operating.
Always wear
proper PPE.
See manual for
details.





▲ CAUTION



Hot Surfaces
Can cause burns
Let Surfaces cool
Before servicing



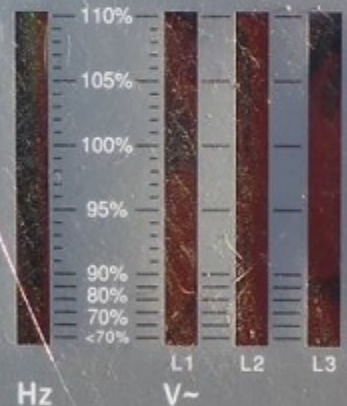
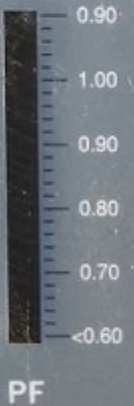
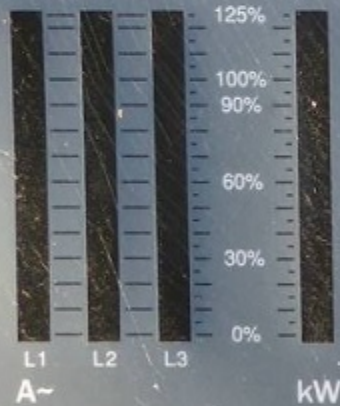
7154

PATENT PENDING
BALDWIN FILTER
Velocity Dual-Flex

PowerCommand



- Running
- Remote Start
- Not in Auto
- Low Oil Pres. Warning
- High Engine Temp Warning
- Low Oil Pres. Shutdown
- Overspeed Shutdown
- Fail To Start



- Shutdown
- Warning
- Fault Acknowledge/Reset
- Panel Lamp/Lamp Test
- Manual Run/Stop
- Manual Auto



2100

This product is covered by one or more of the following US patents: 5,008,506; 5,171,570; 5,171,571.

HAZARD
DANGER
HAZARDOUS VOLTAGE
WILL CAUSE SEVERE INJURY OR DEATH.
DISCONNECT ALL ELECTRICAL SUPPLY SOURCES
BEFORE SERVICING. **YFM**

DANGER