

## Nikolas Wachlarowicz

---

**From:** PGE Sales Support [pgesales@gmail.com]  
**Sent:** Monday, May 04, 2015 11:23 AM  
**To:** Nikolas Wachlarowicz  
**Subject:** Re: CHRIS ADD: FW: Add please Fwd: 2 EACH 2.5 meg Cat turnkey plant 2500 KW  
**Attachments:** GS3614 A-Caterpillar-Diesel-2500kw-3125kva-Generator Set.jpg; GS3614 B-Caterpillar-Diesel-2500kw-3125kva-Generator Set.jpg; GS3614 C-Caterpillar-Diesel-2500kw-3125kva-Generator Set.jpg; GS3614 D-Caterpillar-Diesel-2500kw-3125kva-Generator Set.jpg; GS3614 E-Caterpillar-Diesel-2500kw-3125kva-Generator Set.jpg; GS3614 F-Caterpillar-Diesel-2500kw-3125kva-Generator Set.jpg; GS3614 G-Caterpillar-Diesel-2500kw-3125kva-Generator Set.jpg

**Flag Status:** Flagged

please review the following listing, pictures attached

Item# GS3614

Best Regards,

**Chris Wyckoff**  
*Power Generation Enterprises*

On Thu, Apr 30, 2015 at 1:44 PM, Joe Galindo <[j.galindo@powergenenterprises.com](mailto:j.galindo@powergenenterprises.com)> wrote:

Please add

---

**From:** Victor | PGE [mailto:[v.seropian@powergenenterprises.com](mailto:v.seropian@powergenenterprises.com)]  
**Sent:** Tuesday, April 07, 2015 5:56 PM  
**To:** Power generation Ent Office; Nik  
**Subject:** Add please Fwd: 2 EACH 2.5 meg Cat turnkey plant 2500 KW

Thank you,

*Victor Seropian*

**Power Generation Enterprises, inc.**

office [+1.818.484.8550](tel:+1.818.484.8550) x 302 | fax [+1.818.660.2283](tel:+1.818.660.2283)

mobile [+1.818.968.8388](tel:+1.818.968.8388)

<http://www.powergenenterprises.com>

[V.Seropian@powergenenterprises.com](mailto:V.Seropian@powergenenterprises.com)

View:

[LinkedIn profile](#)

**[Click here to see our Featured Generators!](#)**

Begin forwarded message:

**From:** Bruce Hackney <[bruce@hackneypower.com](mailto:bruce@hackneypower.com)>  
**Date:** April 6, 2015 at 7:40:36 AM PDT  
**To:** Victor | PGE <[v.seropian@powergenenterprises.com](mailto:v.seropian@powergenenterprises.com)>  
**Subject:** Fwd: 2 EACH 2.5 meg Cat turnkey plant 2500 KW

price is \$1,275,000 FOB complete plant Masseurachusetts

Bruce Hackney

[Bruce@HackneyPower.com](mailto:Bruce@HackneyPower.com)

[\(317\) 408-8501](tel:(317)408-8501)



THEY PAID \$2,600,000 FOR THE INSTALLATION IN 2011, THEY PUT 5 YR, 2500 ESC, EXPIRES MAY 2016, ( STILL LONGER THAN NEW WARRANTY) S/A , BASE TANKS, AND COMPLETE SWITCHGEAR PACKAGE. THEY ARE ASKING \$1,800,000

Bruce Hackney

[Bruce@HackneyPower.com](mailto:Bruce@HackneyPower.com)

[\(317\) 408-8501](tel:(317)408-8501)

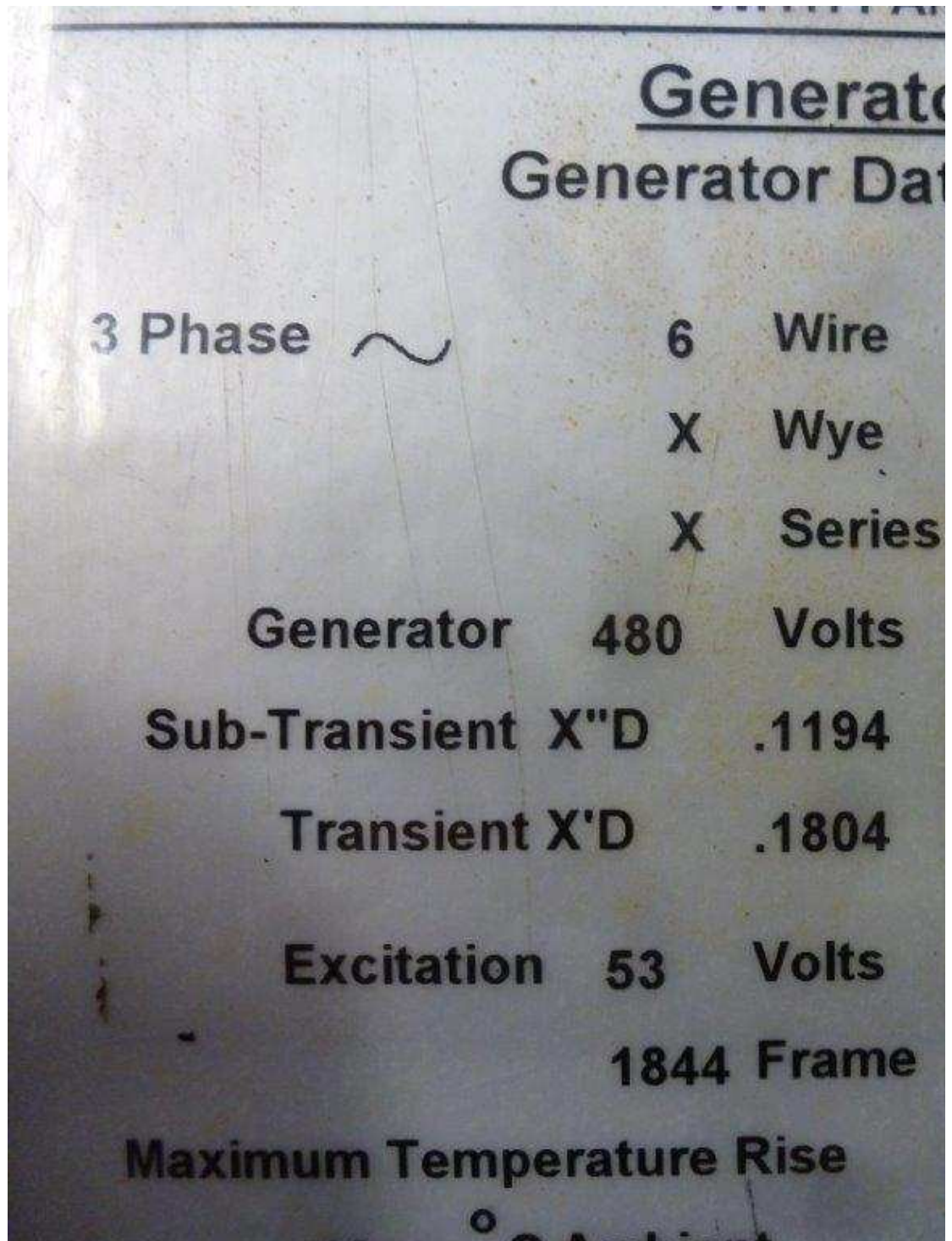


Bruce, just saw these (2) Cat 3516 coming out of a plant Full switchgear available. Will forward under a separate email.

KW: 2500  
Year: 2011  
Hours: 66 & 83  
SN: SBKO1XXX

In great shape. Available in 4 weeks.

Let me know.



40

° C Ambient

Class

**Enclosure Type:**

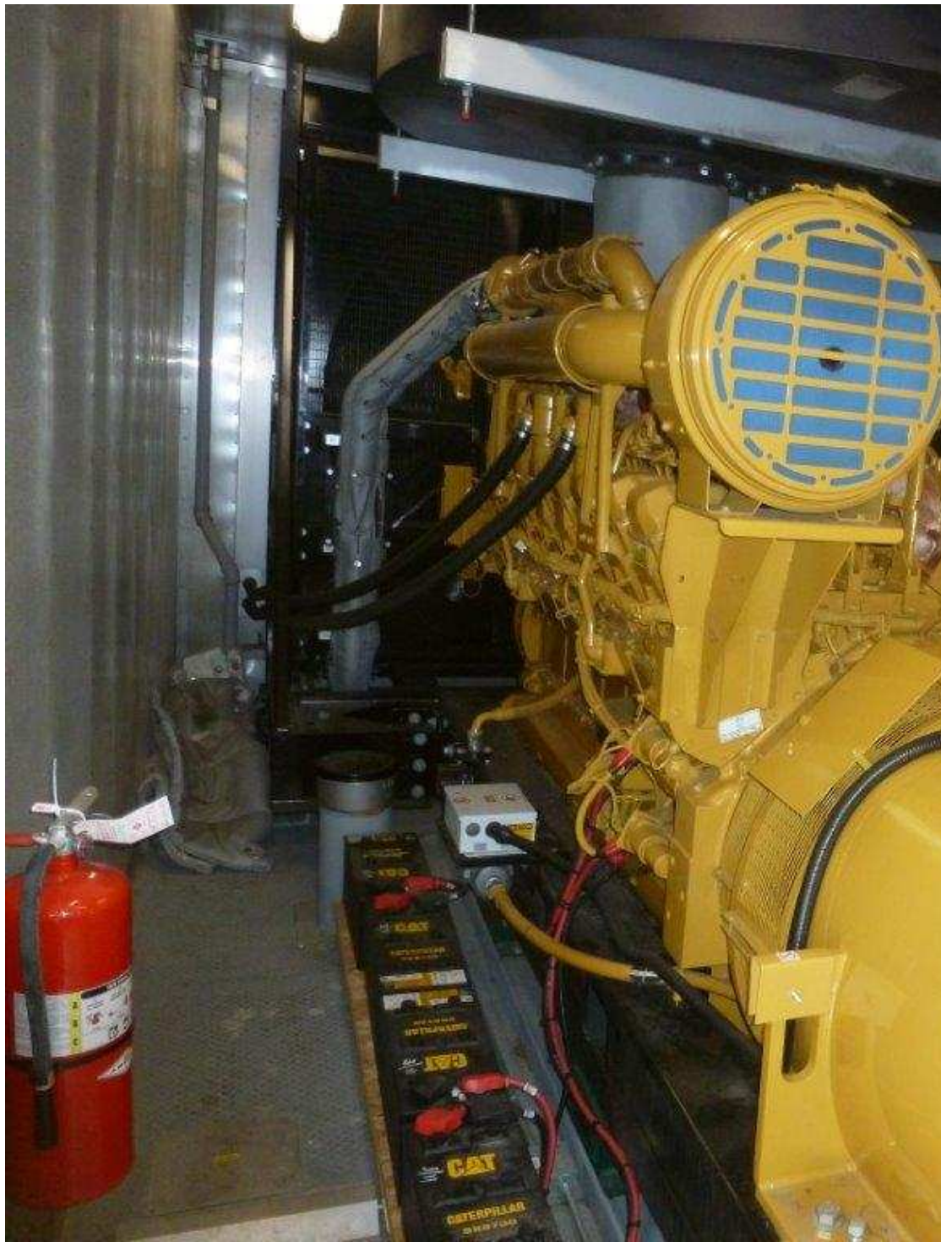
---

Include Serial Number and Gen  
serial number plate when orde

**Gen S/N :      G7G00354**

**Manufactured**







104 °F

6



11110

Engine Model 3516

136

Rotation CCW

7009

Max Alt 900

M

FLS (Intercept) 0

FTS (Slope) 0

mm

ECM Software

3489870

mm

2501368





Engine Model 3510

3125 kVA 2500

Prime X

---

Gen

3 Phase ~