

HAPPY HOLIDAYS

Year end Clearance Prices dropped 10-20%

Industrial Equipment

Diesel Generators

Power Max PMD20 Diesel generator 120/240 single phase skid mounted, Sound attenuated, main breaker, control panel, convenience outlets. 4 cylinder Lombardini engine 30.6 Hp, auto start. 160 gallon single wall fuel tank with burn rate of 1.37 gallons per hour at 75% load.

Equipment #	Uo15480	Serial #	06-01674	Year	2006	Hours	New	\$8500.00
Equipment #	Uo15482	Serial #	06-01629	Year	2006	Hours	New	\$8500.00
Equipment #	Uo15483	Serial #	06-01639	Year	2006	Hours	New	\$8500.00
Equipment #	Uo15484	Serial #	06-01638	Year	2006	Hours	New	\$8500.00



MultiQuip MQ45 36Kw prime rated Portable generator tier 4 Isuzu engine, voltage change over selector switch from 120/240 single phase to 208/480 3 phase. Belly tank sound attenuated enclosure and trailer.

Equipment #	UG15503	Serial #	7205391	Year	2011	Hours	8514	\$13,980.00
-------------	---------	----------	---------	------	------	-------	------	-------------



Cat XQ100 rental generator, 100 kW, 3054C Tier 1 engine, trailer mounted with base tank, sound attenuated enclosure

Equipment #	UG15529	Serial #	XYC00267	Year	2006	Hours	5160	\$27,555.00
-------------	---------	----------	----------	------	------	-------	------	-------------



Cat XQ100 rental generator, 100 kW, C4.4 Tier 3 engine, trailer mounted with base tank, sound attenuated enclosure

For further information contact Jonathan Caldwell at JCaldwell@AlbanCat.com or 443-324-4264

All equipment is subject to prior sale , All pictures shown are of similar of exact item.

Equipment #	UG15501	Serial #	D4D02088	Year	2011	Hours	9055	\$17,555.00
Equipment #	UG15502	Serial #	D4D00615	Year	2008	Hours	8963	\$16,750.00



Cat 3456 D200 P4 diesel generator, 200 kW, 200 kW 120/208V 3 phase 60HZ, standby rating, with drop over weather proof enclosure, control panel, and battery charger. Jacket water heater and main breaker 350 gallon base tank, battery blankets remote annunciator. Tier 2 emissions. Dealer sold and service for entire life of unit. Unit will be load tested prior to shipment.

Equipment #	UG15745	Serial #	NNS01066	Year	2005	Hours	610	\$19,900.00
-------------	---------	----------	----------	------	------	-------	-----	-------------



ITS HEAR AND BEAUTIFUL... AND REDUCED!!!!

Detroit Diesel Model 650DSEB Diesel generator 660KW 277/480V. MTU 12/2000 G43 Heavy duty 4 cylinder engine, electronic Isoc control, 2000 amp breaker, sound attenuated with 3700 gallon double wall base fuel tank.

Equipment #	UG15717	Serial #	DSEB0011	Year	2005	Hours	371.8	\$59,000.00
-------------	---------	----------	----------	------	------	-------	-------	-------------



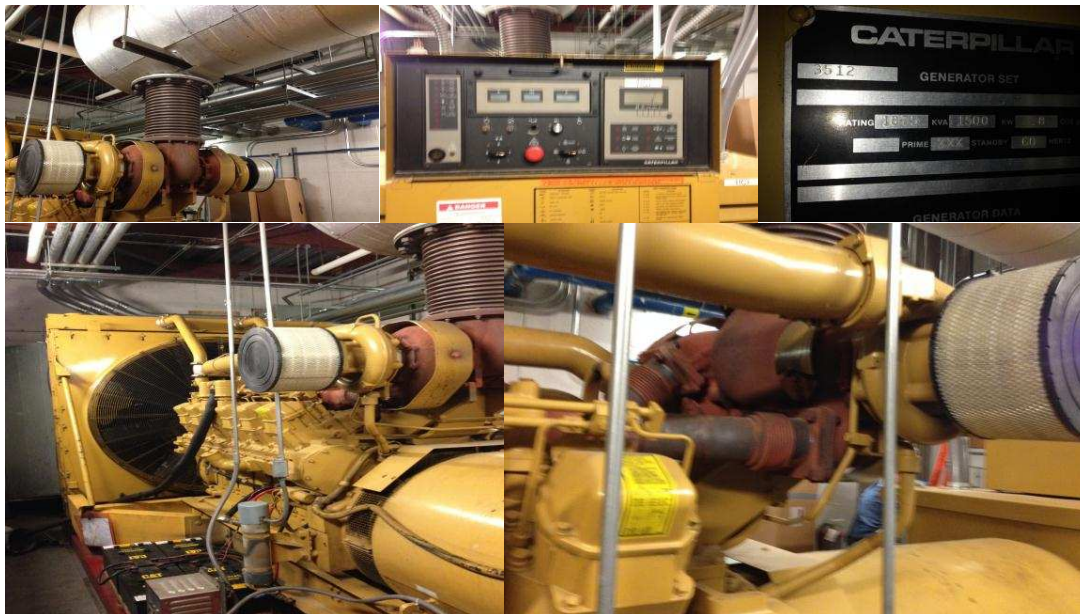
For further information contact Jonathan Caldwell at JCaldwell@AlbanCat.com or 443-324-4264

All equipment is subject to prior sale , All pictures shown are of similar of exact item.

JUST IN AND WON'T LAST ALBAN SOLD AND SERVICED FOR ENTIRE LIFE OF MACHINE.

CAT 3512 DITA 1500KW 480/277 standby rated health care data center running take out. Skid mounted, EMCP control panel Arrangement: 7C8112 SR4 generator end. 24 V electric start, 50 gallon Pryco day tank and pump system. Not current emissions compliant, to be used in non-regulated territory, only. Dealer sold and service for entire life of unit. Unit will be load tested prior to shipment. Standalone 3000 amp breaker and exhaust silencer. FOB Elkridge MD

Equipment #	UG15881	Serial #	3YF00545	Year	1990	Hours	2713	\$75,000.00
-------------	---------	----------	----------	------	------	-------	------	-------------



For further information contact Jonathan Caldwell at JCaldwell@AlbanCat.com or 443-324-4264
All equipment is subject to prior sale , All pictures shown are of similar of exact item.

CAT 3516B, 2000 kW 480/ 277 v, 2168 BHP standby rating, 3516B generator with drop over sound attenuated enclosure, control panel, and battery charger. Jacket water heater and main breaker. No base tank. Optional 3000 gallon Hall Mark UL listed fire rated, double wall tank. Has Not current emissions compliant, to be used in non-regulated territory, only. Dealer sold and service for entire life of unit. Unit will be load tested prior to shipment. **REDUCED**

Equipment #	UG15435	Serial #	6HN01266	Year	2000	Hours	129	\$239,000
-------------	---------	----------	----------	------	------	-------	-----	------------------



Cat 3516B, 2000 kW 4160v, 1800 RPM 60 Hertz standby rating, 3516B generator Skid mounted, control panel, and battery charger. Jacket water heater and main breaker. Not current emissions compliant, to be used in non-regulated territory, only. Dealer sold and service for entire life of the units. Units will be load tested prior to shipment. Package comes with paralleling switchgear, breakers, touch screen PLC.

Generator ends are Magna Max. **All documentation, asbuilts, programming, drawings, manuals, maintenance records are complete. REDUCED THIS MONTH**

Equipment #	UG15455	Serial #	6HN00952	Year	2000	Hours	428	\$275,000
Equipment#	UG15456	Serial #	6HN01630	Year	2001	Hours	338	\$275,000
Package price for both units								\$479,000



For further information contact Jonathan Caldwell at JCaldwell@AlbanCat.com or 443-324-4264
All equipment is subject to prior sale , All pictures shown are of similar of exact item.

Fuel and liquid Tanks

Subbase Fuel tank 400 Gallon DW with Rupture basin alarm from a 3456 industrial generator package

Equipment #	Cat	Serial #	FT0400	Year	2010	Hours	New	\$4,000
-------------	-----	----------	--------	------	------	-------	-----	---------



Skid mounted Single wall waste oil tank or fuel tank 1000 gallons

Equipment #	Alt	Serial #	FT1000	Year	2000	Hours	used	\$2,000
-------------	-----	----------	--------	------	------	-------	------	---------



Automatic Transfer Switches

Zenith 1000 Amp 3 pole 277/480 4 wire 60HZ Nema 1

Equipment #	P10004A	Serial #	CTGA100E	Year	2009	Hours	New	\$8,000
-------------	---------	----------	----------	------	------	-------	-----	---------

Zenith Automatic Transfer Switch ISO 2600A 3P 120/208V 4 wire 60 HZ 3 phase NEMA 1 Enclosure S/N TSA17498

Equipment #	P10004B	Serial #	CTGA260E	Year	2009	Hours	New	\$18,000
-------------	---------	----------	----------	------	------	-------	-----	----------

Zenith 800A ZBTS 4 pole 277/480V open transition

Equipment #	P10004B	Serial #	CTGA80E	Year	2012	Hours	New	\$14,000

3000 Amp ASCO ATS Model G7ACUSA33000N5XM NEMA 3R Secure Double Door Enclosure w/Opts 18B 18G 31Z 40PB 44G 72E & 125

Equipment #	TS15070	Serial #	P10107	Year	2013	Hours	New	\$32,000
-------------	---------	----------	--------	------	------	-------	-----	----------

For further information contact Jonathan Caldwell at JCaldwell@AlbanCat.com or 443-324-4264

All equipment is subject to prior sale , All pictures shown are of similar of exact item.

UPS's

Cat 300 UPS, 300 kVA 480 v, rotary UPS right side add on MMU, suitable for indoor use.

Equipment #	UP14386	Serial #	CSY00241	Year	2011	Hours	New	\$71,731
-------------	---------	----------	----------	------	------	-------	-----	----------



Cat 600 UPS, 600 kVA 480 v, rotary UPS, suitable for indoor use.

Equipment #	UP12350	Serial #	CTX00277	Year	2005	Hours	New	\$156,187
-------------	---------	----------	----------	------	------	-------	-----	-----------



Cat 1200 UPS, 1200 kVA 480 v, rotary UPS, suitable for indoor use.

Equipment #	UP13948	Serial #	HDR00100	Year	2010	Hours	New	\$329,888
-------------	---------	----------	----------	------	------	-------	-----	-----------

BLOW OUT PRICING GET THEM WHILE THEY LAST!!

Marine Equipment

Dredge Engines

Cat 3516 DITA-JK, 1710 BHP, 1800 RPM, continuous rating, industrial dredge engine, with mechanical governor. Not current emissions compliant, to be used in non-regulated territory, only.

Equipment #	EI13397	Serial #	27Z00924	Year	2009	Hours	New	WAS	\$175,231
								NOW	\$159,000



Marine Diesel Generators

Cat C9 Marine Package, 238 kW 480 v, standby rating, C9 engine, electronic governor, Marine Society Certification. AS IS Condition.

For further information contact Jonathan Caldwell at JCaldwell@AlbanCat.com or 443-324-4264

All equipment is subject to prior sale , All pictures shown are of similar of exact item.

Equipment #	EM13490	Serial #	SJB00767	Year	2009	Hours	New	WAS	\$56,849
								NOW	\$38,000

Cat C3512B DITA SCAC, 1500 BHP, 1800 RPM, commercial rating, marine propulsion engine, left hand service side. Not current emissions compliant, to be used in non-regulated territory, only.

Equipment #	EM13192	Serial #	S2L00642	Year	2007	Hours	New	WAS	\$188,381
								NOW	\$140,000

Cat C3512B DITA SCAC, 1500 BHP, 1800 RPM, commercial rating, marine propulsion engine, right hand service side. Not current emissions compliant, to be used in non-regulated territory, only.

Equipment #	EM13193	Serial #	S2L00645	Year	2007	Hours	New	WAS	\$184,413
								NOW	\$ 140,000

Cat C30 DITTA MAR, 1550 BHP, 2300 RPM, pleasure craft rating, marine propulsion engine, starboard side. Not current emissions compliant, to be used in non-regulated territory, only.

Equipment #	EM12165	Serial #	CLX02914	Year	2006	Hours	New	WAS	\$80,494
								NOW	\$58,800

GENERATOR ENDS

Wilson SR4 1500Kw /1875Kva, 60 hertz, 3 phase, 480V WYE. Generator end from a Cat 3516 frame 806, Arrangement 7C1626, 1800 RPM with Class F insulation.

Equipment #	EN13659	Serial#	6AA01725	Year		Hours	Used	\$35,000
-------------	---------	---------	----------	------	--	-------	------	----------

Cat SR4B-GB 1500Kw/1875kVA 60 hertz 3 Phase Wye Generator end for 3512C-GD Frame 824 arrangement 262-8102, and 262-8101

Equipment #	EN13722	Serial#	G4W00437	Year	2007	824	New Surplus	\$35,000
Equipment #	EN13723	Serial#	G4W00437	Year	2007	824	New Surplus	\$35,000

Transformers

Quantity of Four (4) Cooper Power systems **75Kva** transformer(s) 3 phase Pad Mount Primary Voltage **12470** to secondary voltage **480Y277. MAKE ME AN OFFER**

Equipment #		Serial#		Year	2011	Hours	NEW	\$10,000.00 EA
-------------	--	---------	--	------	------	-------	-----	----------------



For further information contact Jonathan Caldwell at JCaldwell@AlbanCat.com or 443-324-4264

All equipment is subject to prior sale , All pictures shown are of similar of exact item.

Load banks

Avtron Load Bank UL listed radiator/duct mounted 500KW at 480V AC 3 phase 60HZ 602 amps per phase designed to fit the radiator of a 3516C – 2500KW Genset.

Equipment #	LB14129	Serial#	4784	Year	2011	Hours	New	\$6900.00
Equipment #	LB14131	Serial#	4782	Year	2011	Hours	New	\$6900.00
Equipment #	LB14132	Serial#	4785	Year	2011	Hours	New	\$6900.00



Simplex Water cooled 500KW pump package Load Bank Model LBW500, 480V 3 Phase 60hz. Flow rate 300GPM per 500KW min, inlet temp Max 80Degrees, Temp rise per 500KW min 10.5 degrees, system working pressure 70PSI.

Equipment #	P10115	Serial#		Year	2013	Hours	New	\$58,588
Equipment #	P10116	Serial#		Year	2013	Hours	New	\$58,588



Thank you for taking the time out of your busy day to review my inventory!!

Jonathan Caldwell
 Used Equipment manager
jcaldwell@alban-cat.com
 Cell: 443-324-4264

For further information contact Jonathan Caldwell at JCaldwell@AlbanCat.com or 443-324-4264

All equipment is subject to prior sale , All pictures shown are of similar of exact item.