

WAUKESHA

Intermediate Gas Engine

F817 G
69 to 190 BHP

DESIGN FEATURES

ENGINE

Breather - Open system.

Crankcase - Integral with cylinder frame. Seven large diameter main bearings.

Crankshaft - Forged steel, with hardened journals, dynamically balanced.

Cylinder heads - Two, interchangeable, valve-in-head type, with stellite faced exhaust valves and exhaust valve seat inserts.

Connecting rods - Drop forged alloy steel, rifle drilled for piston pin lubrication.

Cylinders - Replaceable wet cylinder liners of centrifugally cast alloy iron.

Engine rotation - Counterclockwise when facing flywheel.

Pistons - Aluminum alloy, oil cooled, with full floating piston pin.

STANDARD EQUIPMENT

AIR INDUCTION SYSTEM

Air cleaner - Oil bath air cleaner.

CONTROL SYSTEM

Governor - Waukesha built-in centrifugal design.

EXHAUST SYSTEM

Dry exhaust manifold with threaded flange connections for 3" (76 mm) pipe.

FLYWHEEL

With ring gear (195 teeth), machined for Twin Disc, two plate, 14" (357 mm) clutch.

Flywheel housing - SAE No. 0, foot-type.

FUEL SYSTEM

Updraft carburetor with 2" (51 mm) NPT inlet.

IGNITION SYSTEM

Semi-low tension magneto and cables. One spark plug per cylinder.

INSTRUMENTATION

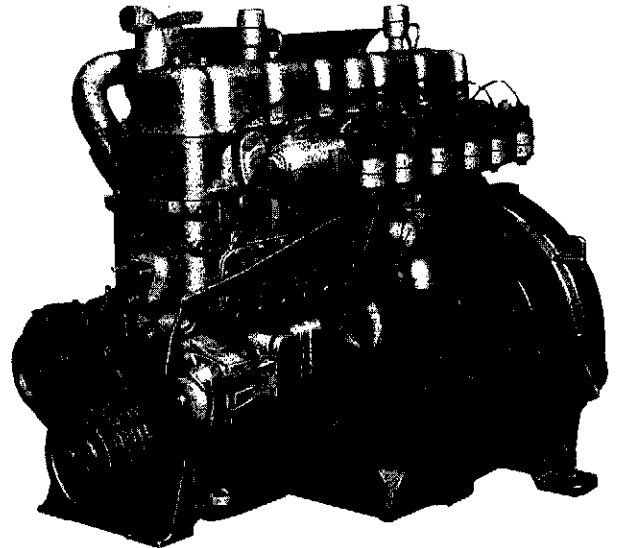
Engine-mounted ignition switch, water temperature and oil pressure gauges.

LUBRICATION SYSTEM

Full pressure system with high-capacity gear-type pump, shunt oil filter and rear sump.

WATER CIRCULATION SYSTEM

Belt-driven jacket water pump, with thermostatically controlled full flow bypass cooling circuit.



Engine shown with options

**Model F817G Naturally Aspirated,
Six Cylinder, Four-Cycle Gas-Fueled Engine**

SPECIFICATIONS

Cylinders Inline 6
Piston Displacement 817 in. ³ (13.31)
Bore & Stroke 5.375" X 6" (137 X 152 mm)
Compression Ratio Standard 9:1
 Optional 7.2:1
Jacket Water System Capacity 10 gal. (38l)
Lube Oil Capacity 5.5 gal. (21l)
Crankshaft Pulley Five grooves; OD 8.31" (211 mm)
Starting System 125-150 psi air/gas; 12V electric
Governor Centrifugal
Dry Weight 2780 lb. (1260 kg)

OPTIONS

Ignition - Solid state.

Fuel System - Optional carburetors, regulators and solenoid valves for multi-fuel systems.

Instruments - Vacuum gauge, lube oil temperature gauge, ammeter, tachometer, hourmeter.

POWER RATINGS*

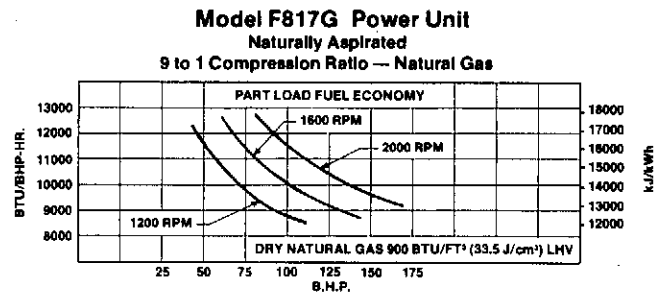
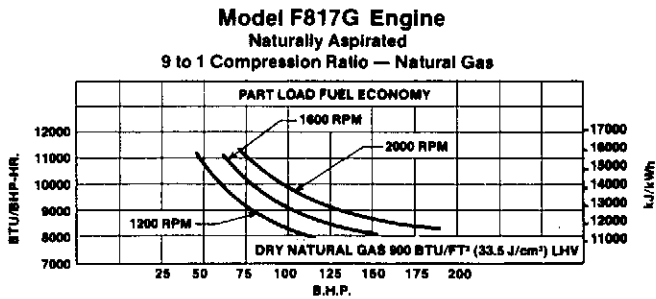
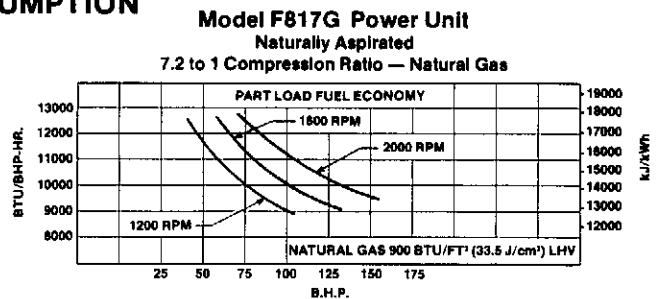
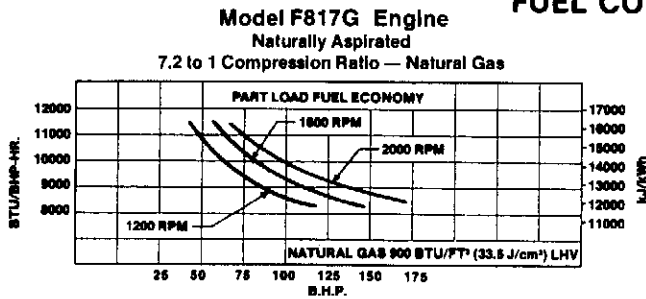
MODEL	BRAKE HORSEPOWER																
	800 RPM		1000 RPM		1200 RPM		1400 RPM		1500 RPM		1600 RPM		1800 RPM		2000 RPM		
	I**	C	I	C	I	C	I	C	I	C	I	C	I	C	I	C	
NATURAL GAS																	
F817G 7.2:1	76	69	96	86	116	104	134	118	141	125	147	132	160	—	172	—	
F817G 9:1	80	72	100	90	120	108	139	125	149	133	158	141	175	—	190	—	
F817G 7.2 :1 Power Unit	74	66	91	81	109	97	122	110	129	116	136	121	145	—	154	—	
F817G 9:1 Power Unit	76	69	95	85	114	101	129	116	138	124	146	131	160	—	172	—	

***Rating Standard:** All engine data is based on these conditions: barometric pressure—29.38 in (746 mm) mercury; inlet manifold air temperature—85°F (29°C). Altitude—500 ft. (152 m). Correction of ratings may be necessary for some high altitude or high inlet air temperature applications. Check Waukesha Engine Division Technical Data Book for factors.

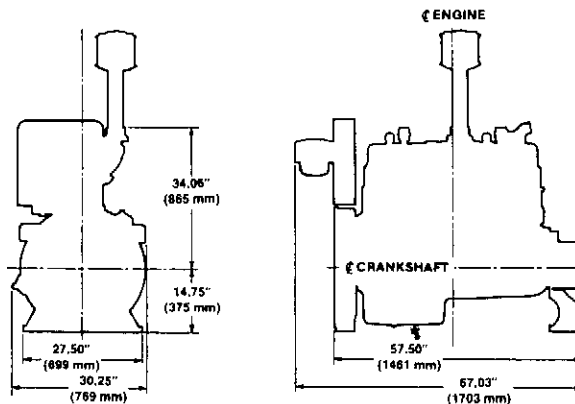
****Intermittent Service Rating:** This rating is the highest load and speed that can be applied in special engine applications. Operation should be limited to a maximum of 1,500 hours per year.

Continuous Power Rating: The highest load and speed which can be applied—24 hours a day, seven days a week—except for normal maintenance. The rating includes operation of the engine at up to 10% overload for two hours in each 24 hour period.

FUEL CONSUMPTION



Alternate Fuels: Waukesha gas-fueled engines are designed for wide fuel flexibility — HD-5 propane, landfill, biomass, digester and other gases. Consult W.E.D. applications engineering or your dealer representative.



The manufacturer reserves the right to change without notice, the design, equipment, specifications or ratings as herein set forth without incurring any obligation either with respect to engines previously sold or in the process of construction, except where otherwise specifically guaranteed by the manufacturer.

Waukesha Sales Offices Worldwide

Baltimore (301) 761-5350 Brussels (32) (2) 660 41 66 Calgary (403) 266 8666 Chicago (708) 916-3144 Denver (303) 779-5675 Houston (713) 893-4170 Miami (305) 370-5035 San Francisco (415) 283-7713 Singapore (65) 7377955



WAUKESHA ENGINE DIVISION
DRESSER INDUSTRIES INC.