

WEIGHT	21020 # ENCLOSURE 31443 # TANK (DRY) 32870 # GENSET (WET) 85333 # TOTAL
SHIPPING DIMENSIONS	14.1" WIDTH 44.3" LENGTH 15.5" HEIGHT
TANK CAPACITY	2700 - GALLONS

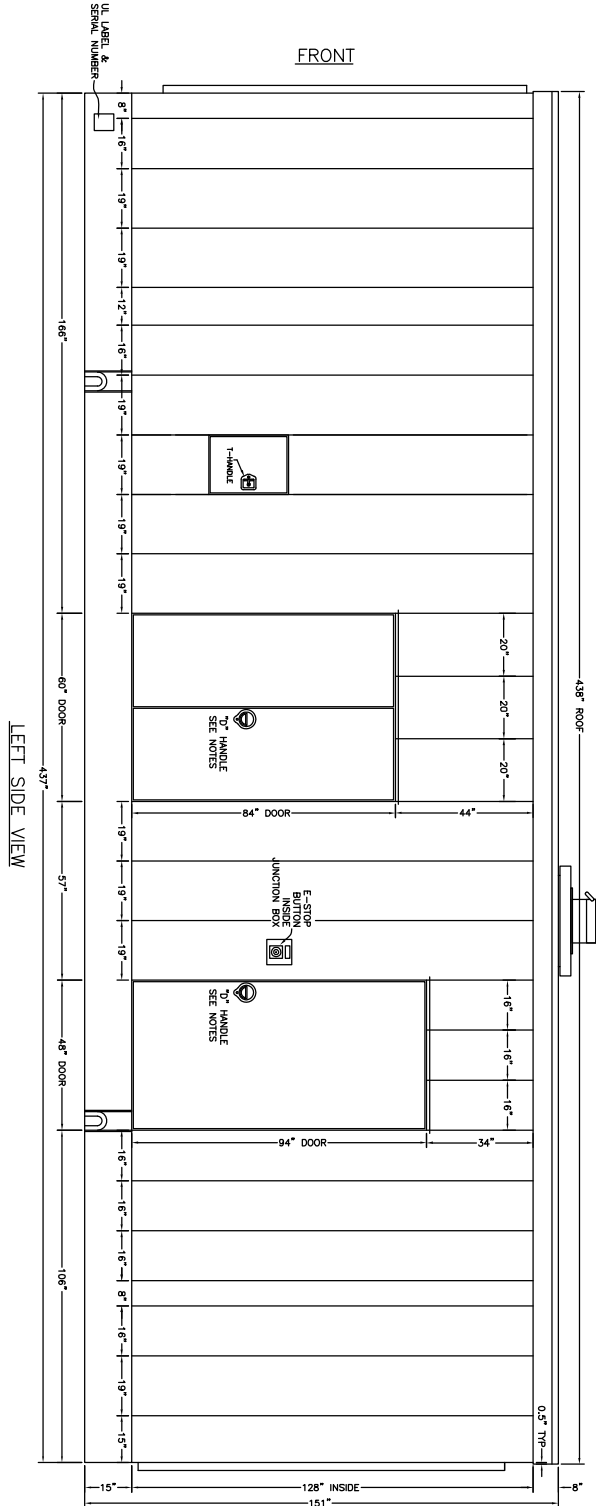
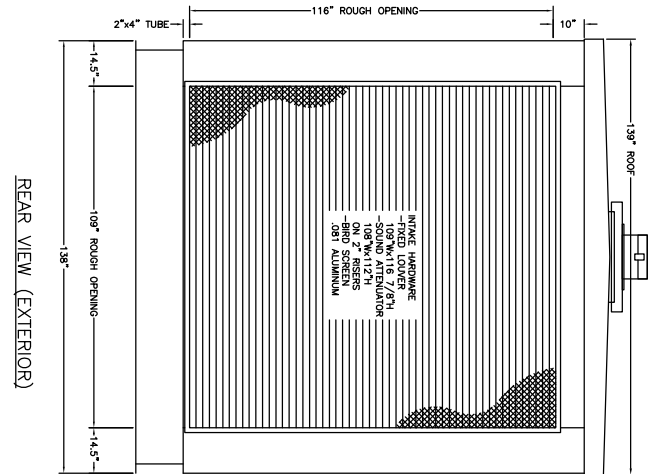
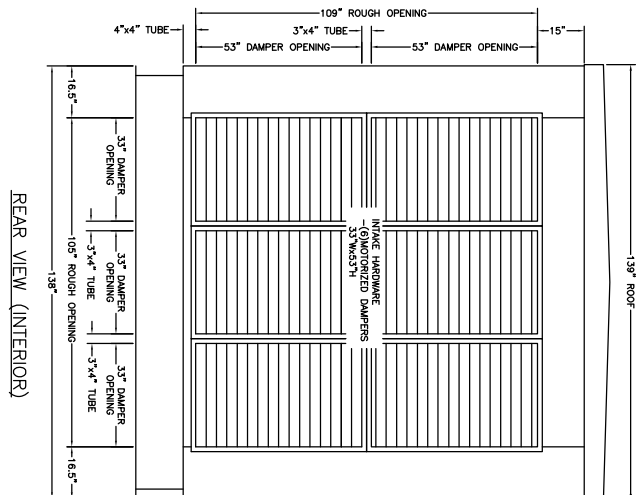
LECTRUS	TEA, S.D.
<input type="checkbox"/> APPROVED	
<input type="checkbox"/> APPROVED AS NOTED	
<input type="checkbox"/> NOT APPROVED	
DATE:	BY:

CUST	ACTIVE POWER	Q2153R1	E AS BUILT REV 2	4/1/11	JRH
PROJ	VERIZON - FREEHOLD, NJ.		D AS BUILT CREATED	12/3/10	JRH
TITLE	SUBBASE ENCLOSURE W/A U.L. 142 RUPTURE BASIN		C ADDED MPZ STUB-UP	11/3/10	JRH
DWG NO.	061058-3-1		B CHANGED LABELS FOR GENSET BREAKERS	11/2/10	JRH
SHT	1 of 8	DRN BY JST	REV	DATE	BY
DATE	10/15/10	CKD BY JRH	REVISION, DESCRIPTION OF CHANGE		

lectrus
ENGINEERED TO BE BUILT TO LAST.

27167 470TH AVENUE
TEA, SD 57064
PHONE (605)368-5306 FAX (605)368-2210

ALL INFORMATION IS THE PROPERTY OF LECTRUS, IT CONTAINS PROPRIETARY AND CONFIDENTIAL INFORMATION WHICH MUST NOT BE DUPLICATED, USED OR DISCLOSED OTHER THAN AS EXPRESSLY AUTHORIZED BY LECTRUS.

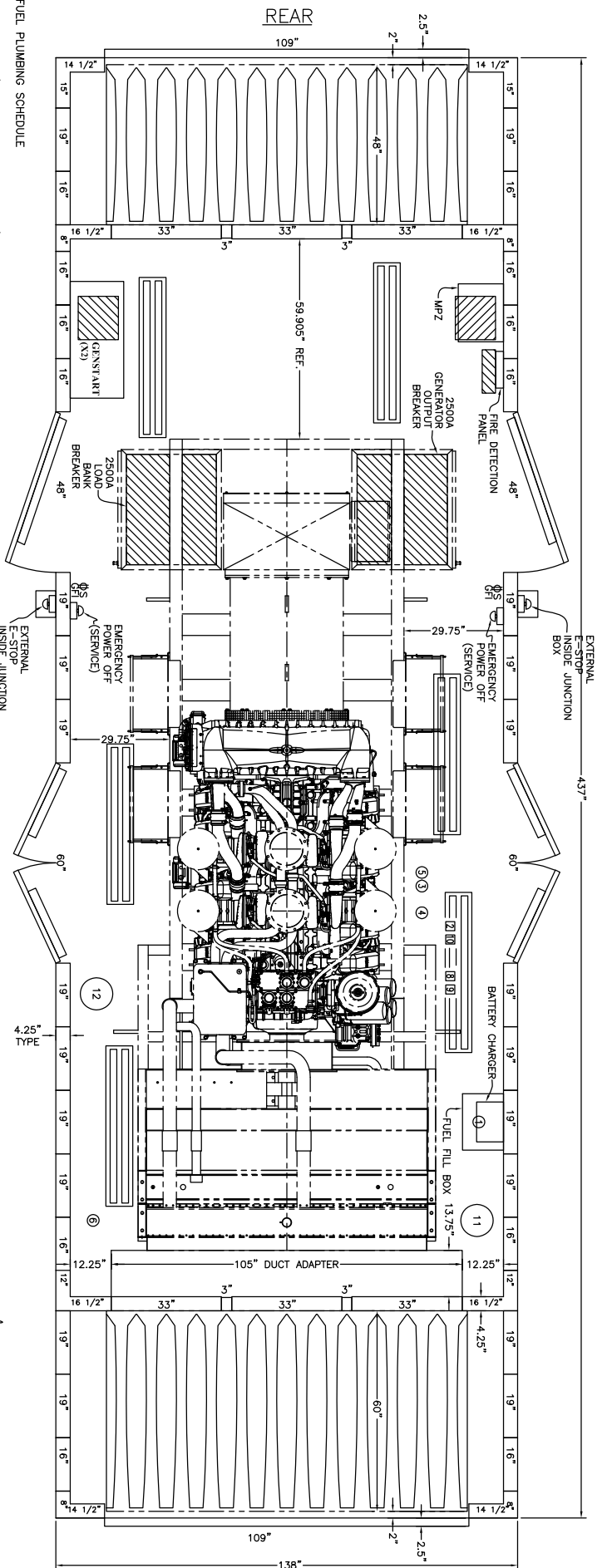


CUST	ACTIVE POWER	D.T.S.	Q2153R1	E	AS BUILT REV 2	4/1/11	JRH
PROJ	VERIZON - FREEHOLD, NJ.	GENSET		D	AS BUILT CREATED	12/3/10	JRH
TITLE	SUBBASE ENCLOSURE W/A U.L. 142 RUPTURE BASIN	DWG #		C	ADDED MPZ STUB-UP	11/3/10	JRH
	TANK FOR MTU 1500RXC6DT2	CUST #		B	CHANGED LABELS FOR GENSET BREAKERS	11/2/10	JRH
DWG NO.	061058-3-1	SHT	2 of 8	REV	REVISION, DESCRIPTION OF CHANGE	DATE	BY
		DATE	10/15/10				
		DRN BY	JST				
		CKD BY	JRH				

lectrus
ENGINEERED TO SPEC. BUILT TO LAST.

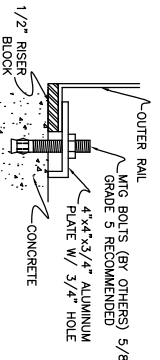
27167 470TH AVENUE
TEL. 50 57064
PHONE (603)368-5306 FAX (603)368-2210

ALL INFORMATION IS THE PROPERTY OF LECTRUS, IF CONTAINS PROPRIETARY AND CONFIDENTIAL INFORMATION WHICH MUST NOT BE DUPLICATED, USED OR DISCLOSED OTHER THAN AS EXPRESSLY AUTHORIZED BY LECTRUS.



ENCLOSURE LAYOUT VIEW

SUBBASE TANK MOUNTING CLIP DETAIL
(Approx 42" CENTERS)



FUEL PLUMBING SCHEDULE

1. FUEL FILL (IN FUEL CONTAINMENT BOX)
2. 2" 12" FLEXIBLE PIPE NIPPLE
2. SCREWED UNION
2. CLOSE NIPPLE
2. 45° ELBOW
2. PIPE COUPLING (SPECIAL BLOCK)
2. 3/4" 6" PIPE NIPPLE (FILL NECK)
2. CAP (NON-VENTED, NON-LOCKABLE)
- FILL BOX (INSTALLED IN WALL)
- DRAIN PLUG W/ 1-HANDLE (TANK)
- 3/4" PHOENIX FLANGE W/ PLUG (DISPOSAL)

FUEL LEVEL INDICATOR

- 1 1/2"x1.3" ROCHESTER GAUGE (MECH)

FUEL SUCTION

- 1" CLOSE NIPPLE
- 1" CHECK VALVE
- (FINAL CONNECTION BY LECTRUS)

FUEL RETURN

- 1" CLOSE NIPPLE
- (FINAL CONNECTION BY LECTRUS)

FUEL VENT PORT

- 2" PIPE THRU ROOF W/ FLANGE
- 2" WASHROOM VENT CAP
- 2" 12" EXT. TUBE W/ FLANGE
- 10" RAIN COLLAR

EMERGENCY VENT

- 8" PIPE THRU ROOF W/ FLANGE
- 8" EMERGENCY VENT CAP
- 8" 12" THREADED EXT. TUBE W/ FLANGE
- 14" RAIN COLLAR

RUPTURE BASIN VENT

- 8" PIPE THRU ROOF W/ FLANGE
- 8" WASHROOM VENT CAP
- 8" 12" EXT. TUBE W/ FLANGE
- 14" RAIN COLLAR

CUSTOMER SUPPLIED EQUIPMENT:

- (1) MTU 1500RXC6D72 GENSET
- (14) ISOLATORS
- (2) GENSTART
- (1) WINDPOWER ZONE (25KVA)
- (1) MINIPORT (25KVA)
- (1) BATTERY CHARGER (120V)

LECTRUS SUPPLIED EQUIPMENT:

- (1) RADIATOR EXHAUST DUCT ADAPTER DURABLE, NON-SKID FLOOR COATING (WALKWAY AREAS ONLY)
- (1) 14" ELBOW
- (1) 14" RAIN CAP
- (3) 14" ASA FLANGE(S)
- (1) EXHAUST PIPE W/RAIP (INSULTECH)
- (2) EXHAUST FLEX (GIE)
- (1) WUFFLER (GIE #H2-6-14-12V4000-10-FM)
- (6) FLUORESCENT VAPOR TIGHT LIGHTS (W/ BATTERY BACKUP)
- (2) LIGHT SWITCHES
- (2) GFI OUTLETS
- (1) FIRE DETECTION PANEL
- (12) DAMPER MOTORS
- (1) KNOX BOX
- (2) EXTERNAL E-STOP
- (2) EPO (TO SHUNT TRIP SUPPLY BREAKER IN UPS, MTD INSIDE)

LECTRUS INSTALLED EQUIPMENT:

- ALL CUSTOMER AND LECTRUS SUPPLIED EQUIPMENT EXCEPT FOR EXTERNAL HARDWARE WHICH MAY BE SHIPPED LOOSE AND INSTALLED BY OTHERS

ADDITIONAL ITEMS:

- LECTRUS TO PLUMB & LABEL OIL/WATER DRAINS TO EXTERIOR
- ENCLOSURE WIRED PER WIRING DIAGRAMS

FABRICATION NOTES

- WALLS: 4" - 14 GA W/ FIBERGLASS INSULATION & 22 GA PERFORATED, GALVANIZED LINER
- DOORS: 4" W/ WELD ON HINGES (LIFT OFF DESIGN)
- LECTRUS #100897 ROD LOCKS (TWO POINT LOCKS, INSIDE RELEASE)
- LECTRUS #101407 RECESSED "D" RING HANDLES (KEYED ALIKE)

INTAKE OPENING:

- SOUND ATTENUATORS 108"Wx112"Hx48"D
- MOTORIZED DAMPERS W/ BELIMO MOTORS (PWR CLOSE/SPRING OPEN)
- ALUMINUM FIXED BLADE LOUVERS MOUNTED ON EXTERIOR W/ .081" ALUMINUM SCREEN

EXHAUST OPENING:

- SOUND ATTENUATORS 108"Wx112"Hx60"D
- MOTORIZED DAMPERS W/ BELIMO MOTORS (PWR CLOSE/SPRING OPEN)
- ALUMINUM FIXED BLADE LOUVERS MOUNTED ON EXTERIOR W/ .081" ALUMINUM SCREEN

PAD MOUNTING:

- 28 ALUMINUM HOLDOWN PLATES, APPROX. 42" O.C.

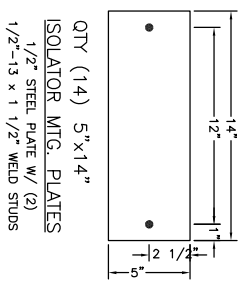
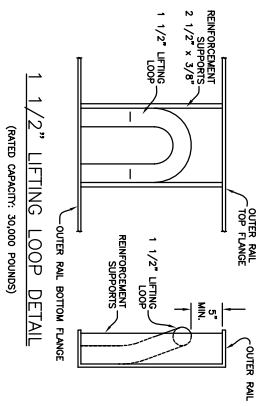
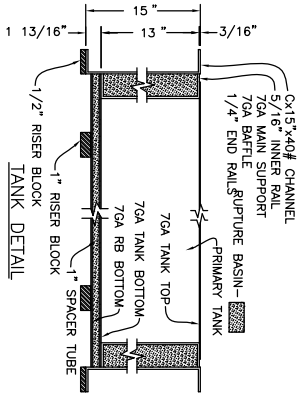
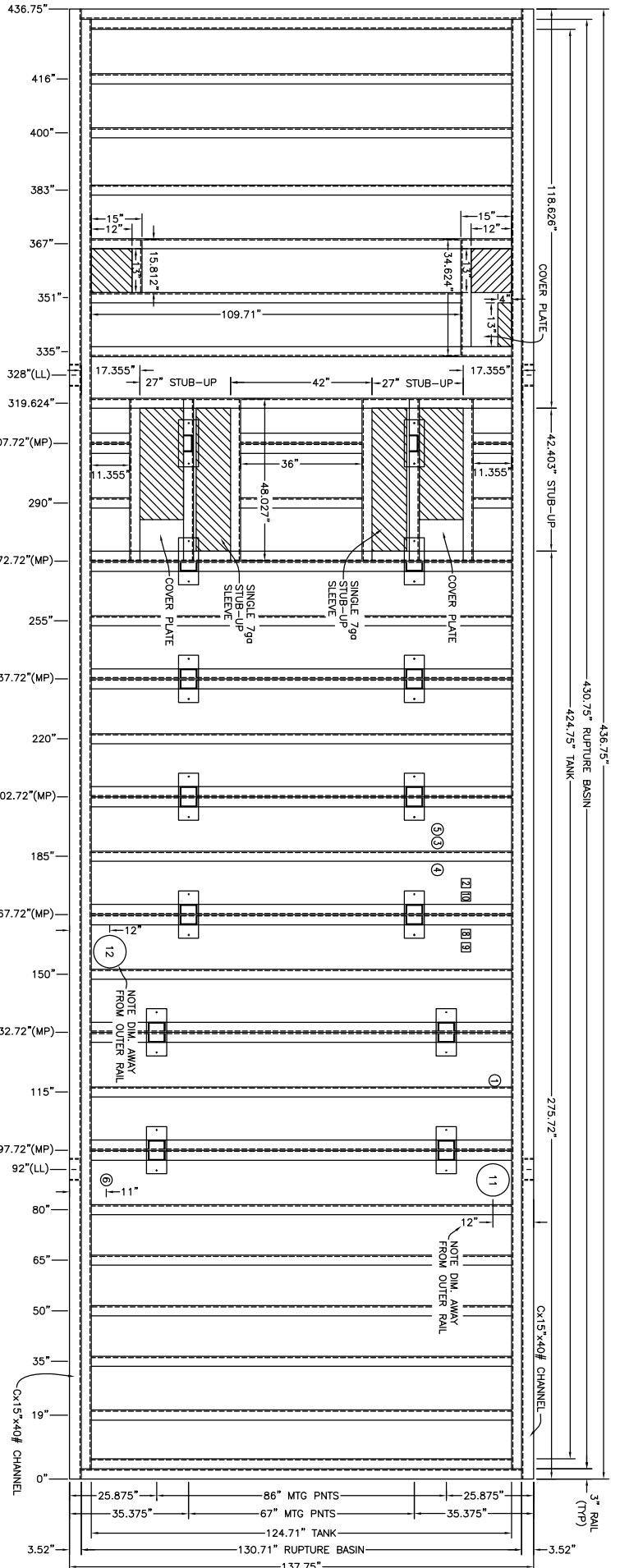
PAINT:

- PREP, PRIME AND PAINT ONE COLOR: WHITE (91.260)
- (PLEASE SPECIFY W/ SHOP DRAWING APPROVAL)

CUST	ACTIVE POWER	D.T.S. QUOTE	Q2153R1	E	AS BUILT REV 2	4/1/11	JRH
PROJ	VERIZON - FREEHOLD, NJ.	GENSET DWG #		D	AS BUILT CREATED	12/3/10	JRH
TITLE	SUBBASE ENCLOSURE W/A U.L. 142 RUPTURE BASIN TANK FOR MTU 1500RXC6D72	CUST #		C	ADDED MPZ STUB-UP	11/3/10	JRH
DWG NO.	061058-3-1	SHT	3 of 8	B	CHANGED LABELS FOR GENSET BREAKERS	11/2/10	JRH
DATE	10/15/10	DRN BY	JST	REV			
DATE		CKD BY	JRH				

lectrus
ENGINEERED TO PERFORM. BUILT TO LAST.
27167 470TH AVENUE
TEL 50 5704
PHONE (603)368-5306 FAX (603)368-2210
ALL INFORMATION IS THE PROPERTY OF LECTRUS. IF IT CONTAINS PROPRIETARY AND CONFIDENTIAL INFORMATION WHICH MUST NOT BE REPLICATED, USED OR DISCLOSED OTHER THAN AS EXPRESSLY AUTHORIZED BY LECTRUS.

REAR



TANK TOP VIEW
2700 GALLON FUEL CAPACITY

LEGEND:

MP: GENERATOR MTG. PTS.

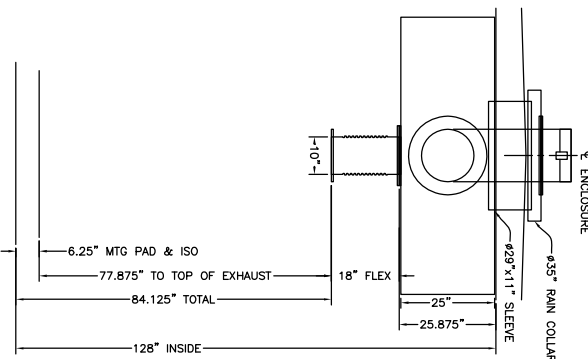
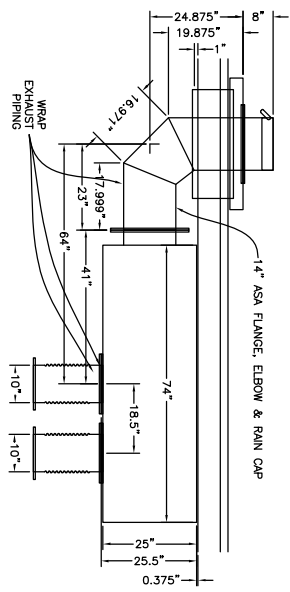
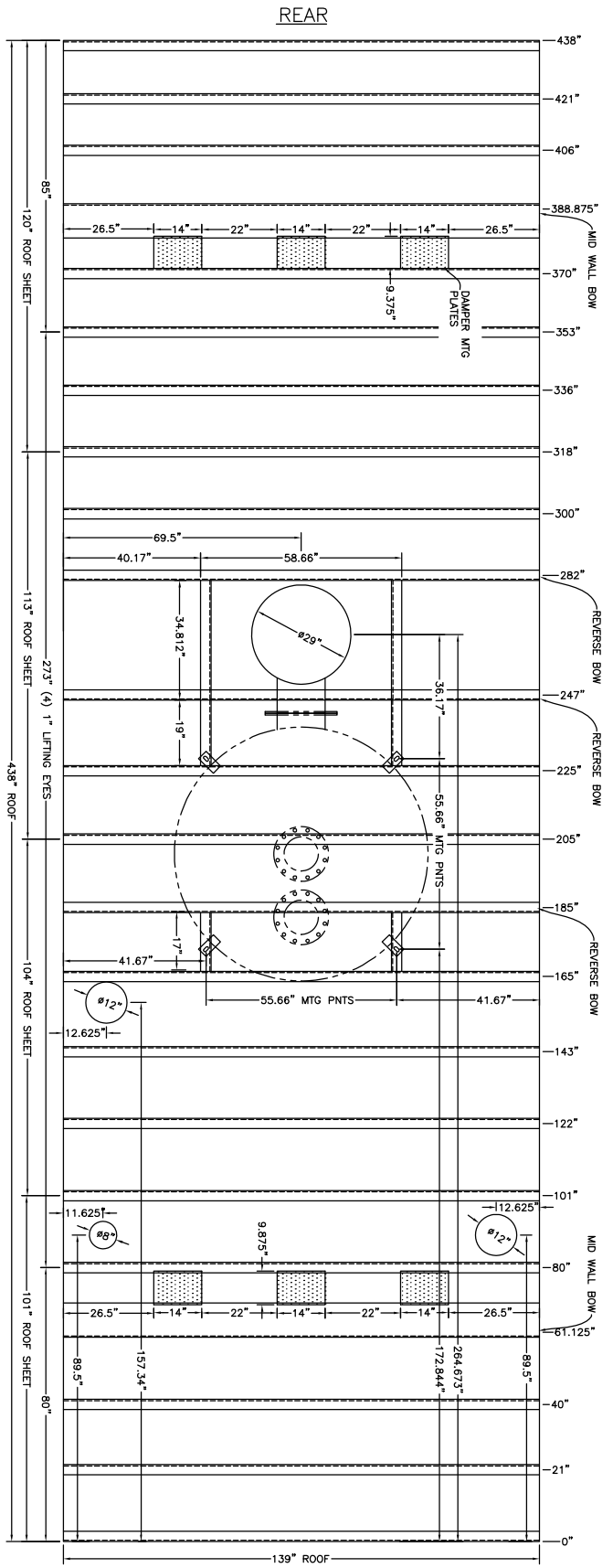
LT: 1 1/2\"/>

FUEL FITTING SCHEDULE

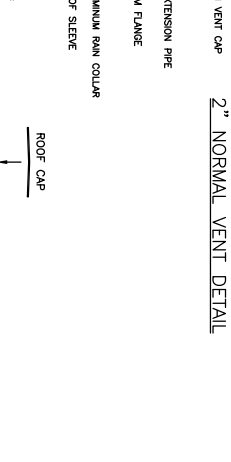
1. FUEL FILL
 2. FUEL PHOENIX FLANGE
 2. FUEL LEVEL INDICATOR
 - 1 1/2\"/>
3. FUEL SUCTION
 - 2\"/>
 - 2\"/>
 - 2\"/>
 - 1\"/>
4. FUEL RETURN
 - 2\"/>
 - 2\"/>
 - 2\"/>
 - 1\"/>
5. SPARE PORT
 - 2\"/>
 - 2\"/>
 - 2\"/>
6. FUEL VENT PORT
 - 2\"/>
 - 2\"/>
7. FUEL LEVEL ALARM (25%/75% STACKABLE)
 - (25% SET POINT @ 9.75\"/>
 - (75% SET POINT @ 3.25\"/>
 - 1 1/2\"/>
 - 1\"/>
8. FUEL LEVEL ALARM (EXTREME BOTTOM)
 - 1 1/2\"/>
 - 2\"/>
 - 2\"/>
 - 1\"/>
9. EMERGENCY VENT
 - 8\"/>
 - 8\"/>
 - 8\"/>
10. FUEL LEVEL ALARM (95%)
 - (SET POINT @ 0.75\"/>
 - 1 1/2\"/>
 - 1\"/>
11. EMERGENCY VENT
 - 8\"/>
 - 8\"/>
 - 8\"/>
12. RUPTURE BASIN VENT
 - 8\"/>
 - 8\"/>
 - 8\"/>

CUST: ACTIVE POWER	D.T.S. QUOTE: Q2153R1	E AS BUILT REV 2	4/1/11	JRH
PROV: VERIZON - FREEHOLD, NJ.	GENSET DWG #	D AS BUILT CREATED	12/3/10	JRH
TITLE: SUBBASE ENCLOSURE W/A U.L. 142 RUPTURE BASIN	CUST ID #	C ADDED MPZ STUB-UP	11/3/10	JRH
TANK FOR MTU 1500RXC6D2	CUST REF #	B CHANGED LABELS FOR GENSET BREAKERS	11/2/10	JRH
DWG NO. 061058-3-1	SHT 4	REV	DATE	BY
DATE 10/15/10	DRN BY JST	CKD BY JRH		

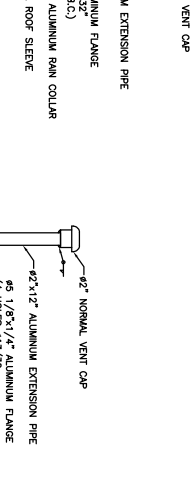
lectrus
ENGINEERED TO BE BUILT TO LAST.
27167 49TH AVENUE
TEL: 50 5704
PHONE (603)368-5306 FAX (603)368-2210
ALL INFORMATION IS THE PROPERTY OF LECTRUS, IF CONTAINS PROPRIETARY AND CONFIDENTIAL INFORMATION WHICH MUST NOT BE DUPLICATED, USED OR DISCLOSED OTHER THAN AS EXPRESSLY AUTHORIZED BY LECTRUS.



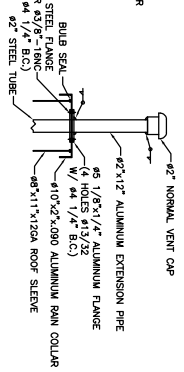
8\"/>



8\"/>



2\"/>



ROOF FABRICATION NOTES

SILENCER DETAIL VIEWS ARE RIGHT SIDE & FRONT

ROOF: 6\"/>

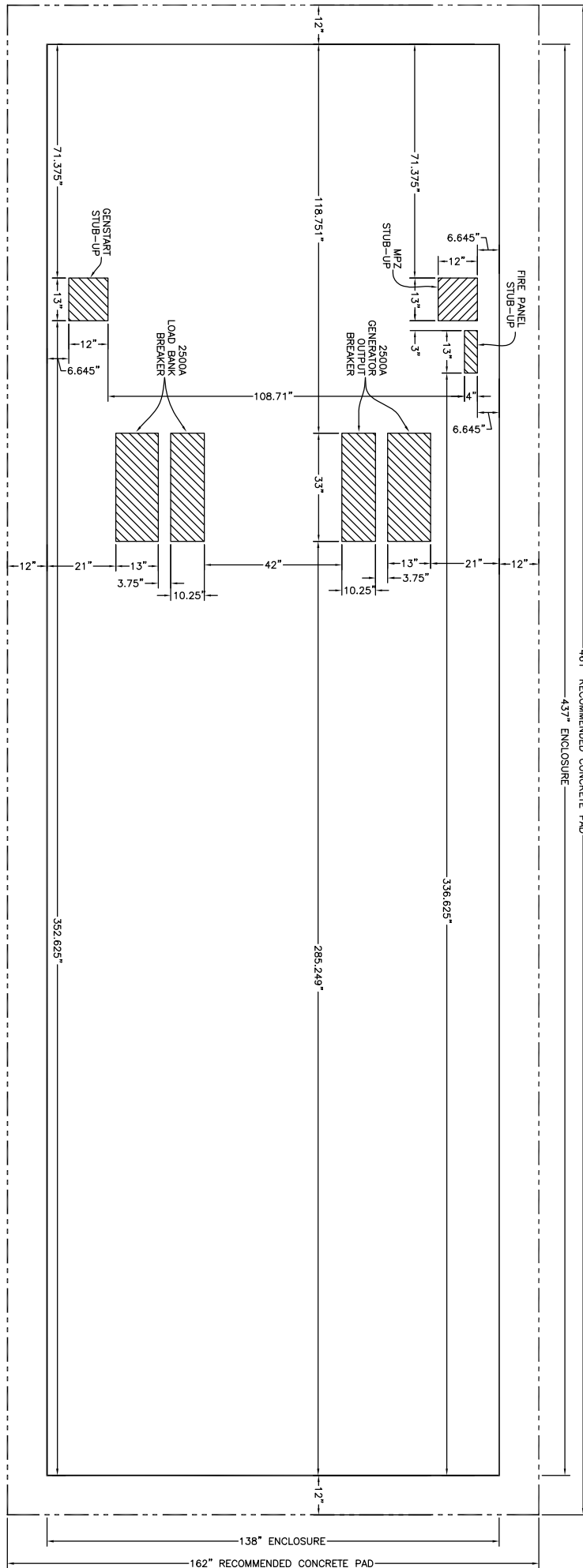
CUST	ACTIVE POWER	D.T.S. QUOTE	Q2153R1	E	AS BUILT REV 2	4/1/11	JRH
PROJ	VERIZON - FREEHOLD, NJ.	GENSET		D	AS BUILT CREATED	12/3/10	JRH
TITLE	SUBBASE ENCLOSURE W/A U.L. 142 RUPTURE BASIN TANK FOR MTU 1500RXC6DT2	DWG #		C	ADDED MPZ STUB-UP	11/3/10	JRH
DWG NO.	061058-3-1	SHT	5 of 8	B	CHANGED LABELS FOR GENSET BREAKERS	11/2/10	JRH
DATE	10/15/10	DRN BY	JST	REV	REVISION, DESCRIPTION OF CHANGE	DATE	BY
CKD BY	JRH						

lectrus
ENGINEERED TO PEOPLE. BUILT TO LAST.

27167 470TH AVENUE
TEL 50 5704
PHONE (603)368-5306 FAX (603)368-2210
ALL INFORMATION IS THE PROPERTY OF LECTRUS, IF IT CONTAINS PROPRIETARY AND CONFIDENTIAL INFORMATION WHICH MUST NOT BE DUPLICATED, USED OR DISCLOSED OTHER THAN AS EXPRESSLY AUTHORIZED BY LECTRUS

REAR

CONCRETE PAD LAYOUT



CUST	ACTIVE POWER
PROJ	VERIZON - FREEHOLD, NJ.
TITLE	SUBBASE ENCLOSURE W/A U.L. 142 RUPTURE BASIN TANK FOR MTU 1500RXC6DT2
DWG NO.	061058-3-1
SHT	6 of 8
DATE	10/15/10
DRN BY	JST
CKD BY	JRH

A.I.S. QUOTE	Q2153R1	E	AS BUILT REV 2	4/1/11	JRH
GENSET DWG #		D	AS BUILT CREATED	12/3/10	JRH
CUST P.O. #		C	ADDED MPZ STUB-UP	11/3/10	JRH
CUST REF #		B	CHANGED LABELS FOR GENSET BREAKERS	11/2/10	JRH
REV			REVISION, DESCRIPTION OF CHANGE	DATE	BY

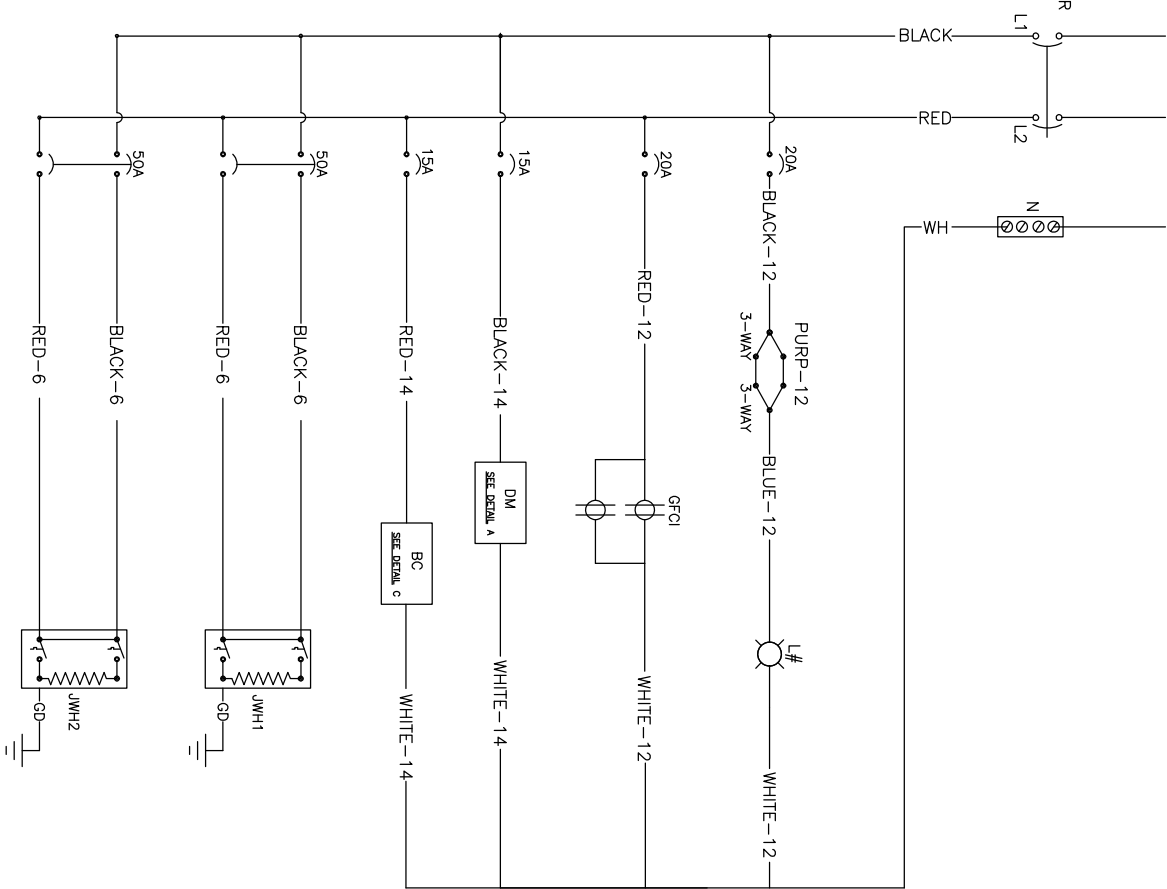
lectrus
ENGINEERED TO SPEC. BUILT TO LAST.
27167 470TH AVENUE
TEL. 50 57064

PHONE (603)368-5306 FAX (603)368-2210
ALL INFORMATION IS THE PROPERTY OF LECTRUS, IF CONTAINS PROPRIETARY AND CONFIDENTIAL INFORMATION WHICH MUST NOT BE DUPLICATED, USED, OR DISCLOSED OTHER THAN AS EXPRESSLY AUTHORIZED BY LECTRUS.

ENCLOSURE SINGLE PHASE AC WIRING DIAGRAM

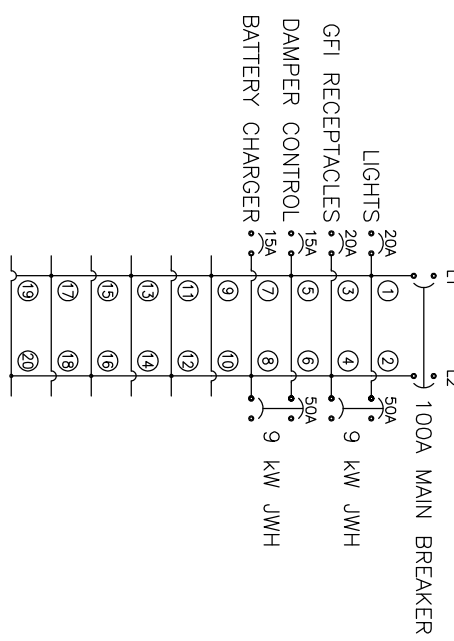
120/240V SINGLE FEEDER FROM BUILDING

100A 120/240V 1 ϕ PANEL FOR GENERATOR HOUSE LOADS



DISTRIBUTION PANEL WIRING DIAGRAM

120/240 V 1 ϕ



- LEGEND:**
- 3-WAY
 - L(#)
 - GFCI
 - DM
 - BC
 - JWH1
 - JWH2
- 3-WAY LIGHT SWITCH
 - LIGHTS (#=QTY)
 - 20A 120V GFCI RECEPTACLE
 - 120V DAMPER MOTORS
 - BATTERY CHARGER
 - 240V 1 ϕ JACKET WATER HEATER
 - 240V 1 ϕ JACKET WATER HEATER

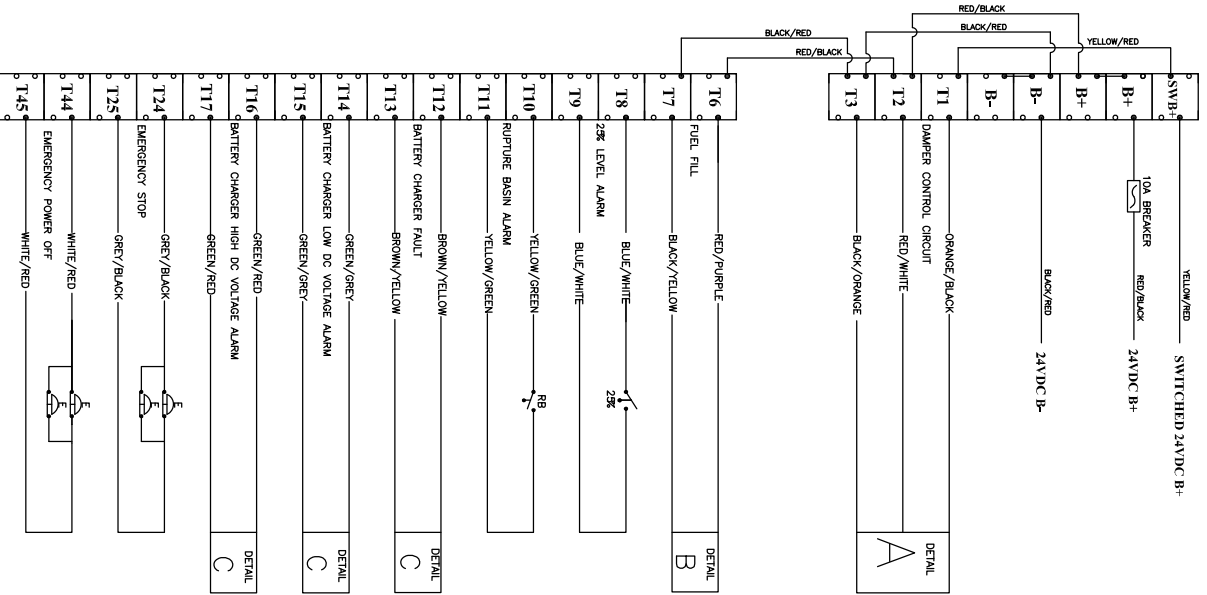
CLUST ACTIVE POWER	S.I.S. QUOTE Q2153R1	E AS BUILT REV 2	4/1/11	JRH
PROV VERIZON - FREEHOLD, NJ.	GENSET DWG #	D AS BUILT CREATED	12/3/10	JRH
TITLE SUBBASE ENCLOSURE W/A U.L. 142 RUPTURE BASIN TANK FOR MTU 1500RXC6DT2	CLUST ID #	C ADDED MPZ STUB-UP	11/3/10	JRH
DWG NO. 061058-3-1	SHT 7 of 8	DRN BY JST	11/2/10	JRH
DATE 10/15/10	CKD BY JRH	REV	DATE	BY

lectrus
ENGINEERED TO SPEC. BUILT TO LAST.
27167 470TH AVENUE
TEL 50 57044

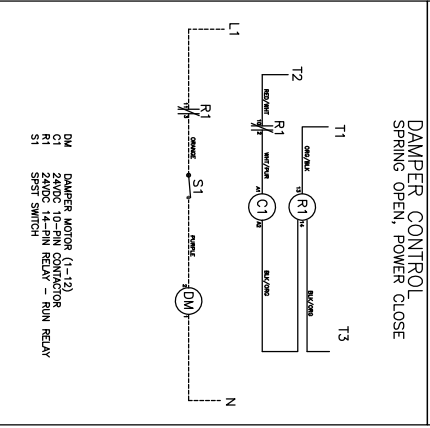
PHONE (603)368-5306 FAX (603)368-2210
ALL INFORMATION IS THE PROPERTY OF LECTRUS, IT CONTAINS PROPRIETARY AND CONFIDENTIAL INFORMATION WHICH MUST NOT BE DUPLICATED, USED OR DISCLOSED OTHER THAN AS EXPRESSLY AUTHORIZED BY LECTRUS

DC TERMINAL STRIP

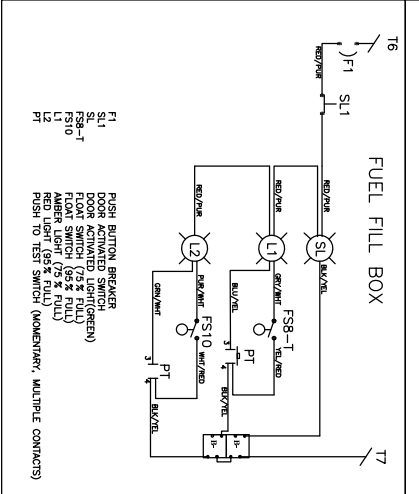
ALL WIRES 16GA. STRANDED TINNED MTW UNLESS NOTED OTHERWISE



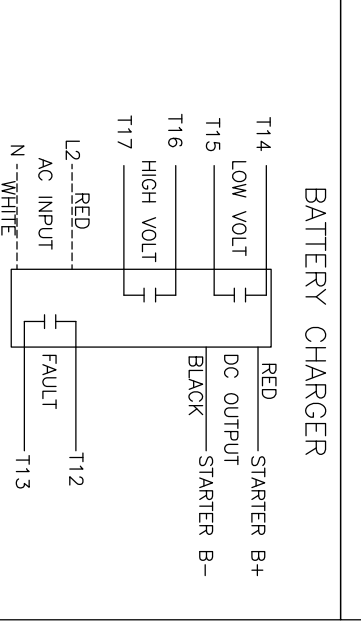
DETAIL A



DETAIL B



DETAIL C



CUST ACTIVE POWER PROJ VERIZON - FREEHOLD, NJ. TITLE SUBBASE ENCLOSURE W/A U.L. 142 RUPTURE BASIN TANK FOR MTU 1500RXC6DT2 DWG NO. 061058-3-1 SHT 8 DATE 10/15/10 DRN BY JST CKD BY JRH	S.I.S. QUOTE Q2153R1 GENSET DWG # CUST ID # CUST LIST #	E AS BUILT REV 2 D AS BUILT CREATED C ADDED MPZ STUB-UP B CHANGED LABELS FOR GENSET BREAKERS REV REVISION, DESCRIPTION OF CHANGE	4/1/11 JRH 12/3/10 JRH 11/3/10 JRH 11/2/10 JRH	lectrus ENGINEERED TO BE BUILT TO LAST. 27167 470TH AVENUE TEL 50 57044 PHONE (603)368-5306 FAX (603)368-2210 <small>ALL INFORMATION IS THE PROPERTY OF LECTRUS. IF CONTAINS PROPRIETARY AND CONFIDENTIAL INFORMATION WHICH MUST NOT BE DUPLICATED, USED OR DISCLOSED OTHER THAN AS EXPRESSLY AUTHORIZED BY LECTRUS.</small>
-----------------------------------------------------------------------------------------------------------------------------------------------------------------------------------------------------------------	------------------------------------------------------------------	----------------------------------------------------------------------------------------------------------------------------------------------	---------------------------------------------------------	----------------------------------------------------------------------------------------------------------------------------------------------------------------------------------------------------------------------------------------------------------------------------------------------------------------------------------------------------