

## Nikolas Wachlarowicz

---

**From:** V.Seropian [v.seropian@powergenenterprises.com]  
**Sent:** Wednesday, October 15, 2014 4:09 PM  
**To:** Joe Galindo; Nikolas Wachlarowicz  
**Subject:** Fwd: Waukesha Gen #2 from Dave

Regards,

Victor Seropian  
Power Generation Enterprises, Inc.  
office +1.818.484.8550 x 302 | fax+1.818.660.2283  
mobile +1.818.968.8388

<http://www.powergenenterprises.com>  
[V.Seropian@powergenenterprises.com](mailto:V.Seropian@powergenenterprises.com)

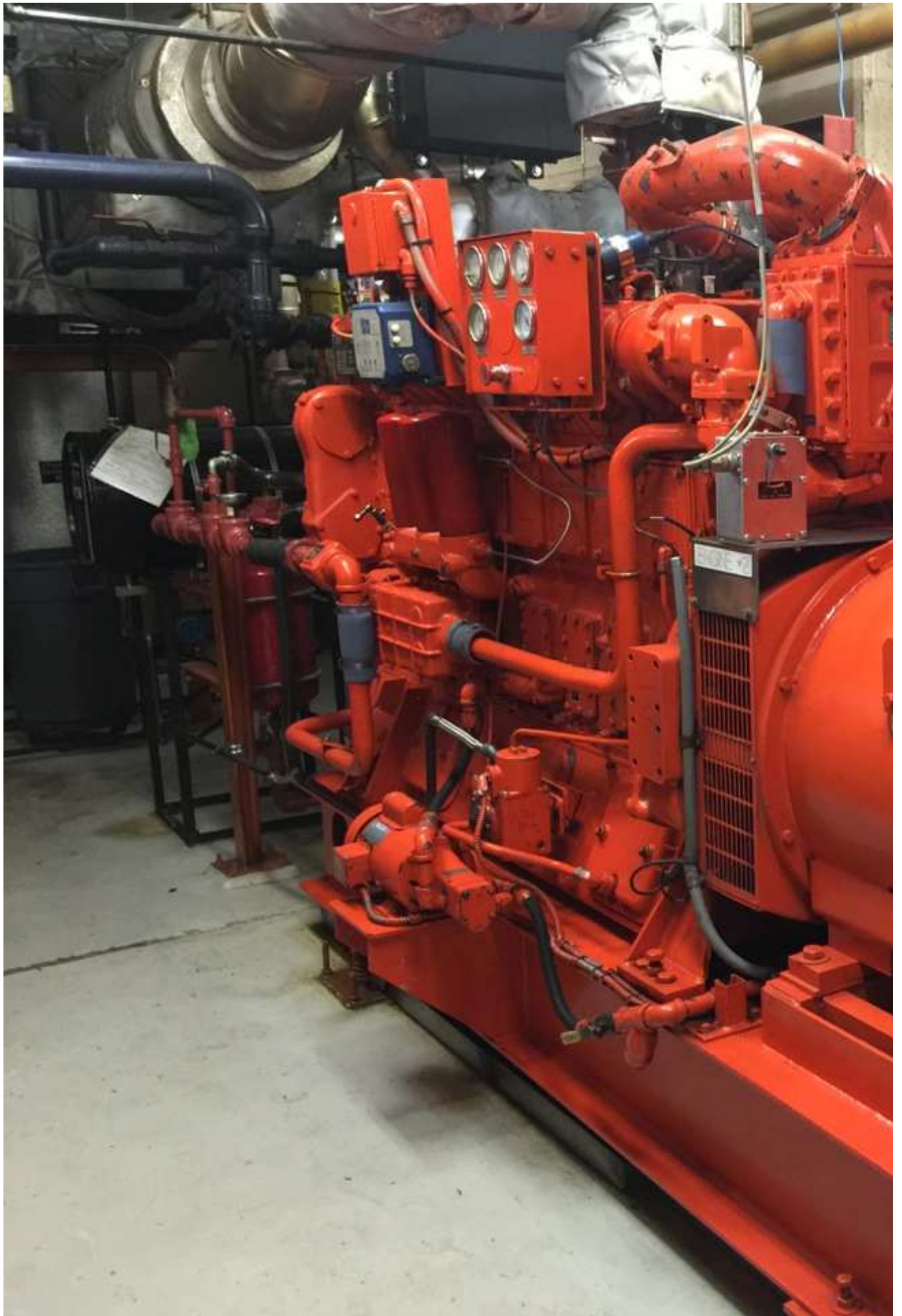
Begin forwarded message:

**From:** Dave Camacho <[dave@apexpowerinc.com](mailto:dave@apexpowerinc.com)>  
**Date:** October 15, 2014 at 3:36:04 PM PDT  
**To:** "V.Seropian" <[v.seropian@powergenenterprises.com](mailto:v.seropian@powergenenterprises.com)>  
**Subject:** Waukesha Gen #2

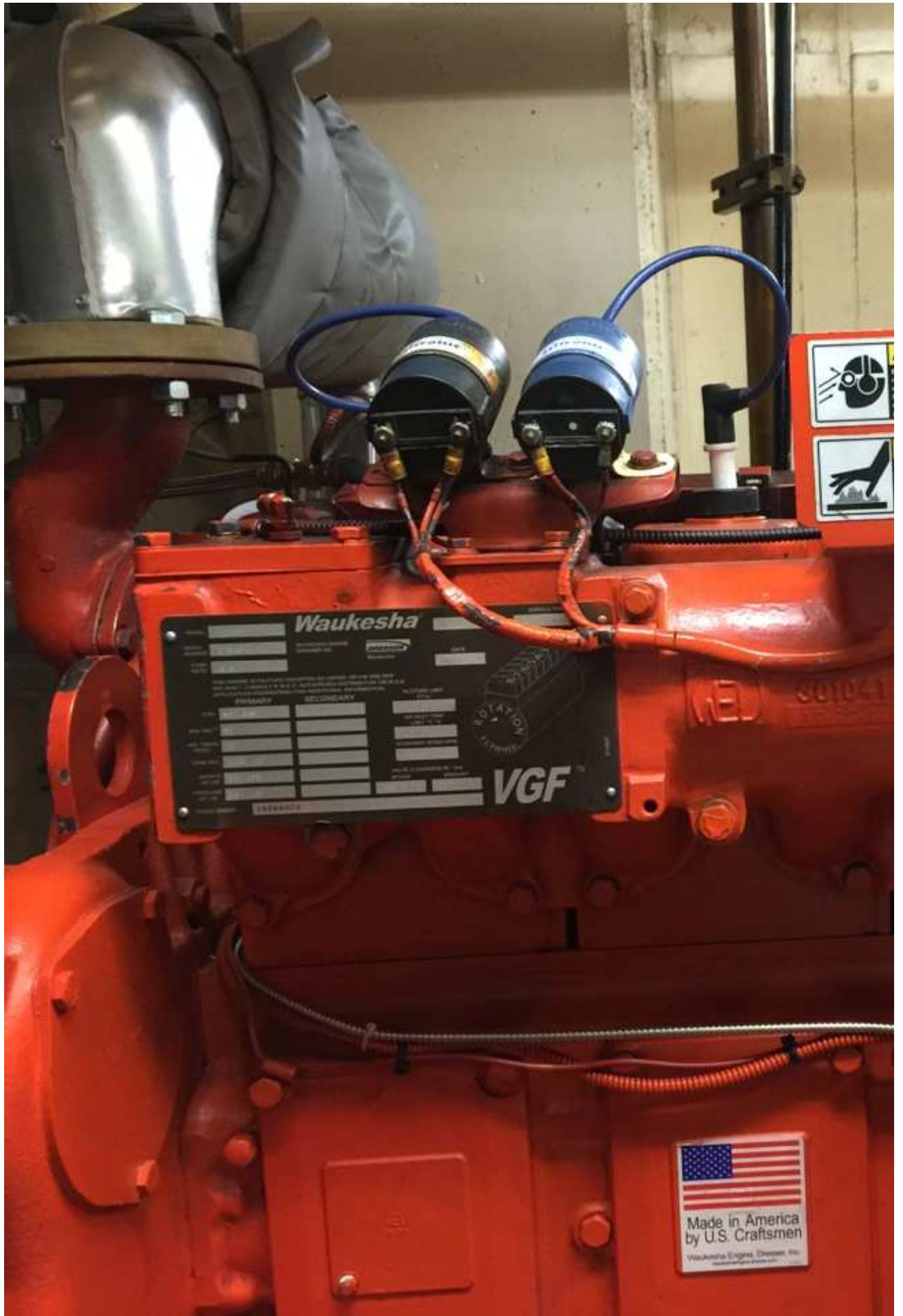
Here you go bud...There a couple of additional emails coming your way

Dave Camacho | President  
APEX Power, Inc.  
P: 562-201-9684  
F: 909-614-7358  
[Dave@ApexPowerInc.com](mailto:Dave@ApexPowerInc.com)









MODEL

H24GSID

# Wauke

SERIAL  
NUMBER

C-94644/1

WAUKESHA ENGINE  
DRESSER INC.

COMP.  
RATIO

8.6/1

THIS ENGINE IS FACTORY EQUIPPED AS LISTED. HP/KW  
ISO 3046/1. CONSULT A W.E.D. AUTHORIZED DISTRIBUTOR  
APPLICATION ENGINEERING FOR ADDITIONAL INFORMATION

## PRIMARY

## SECONDARY

FUEL

NAT. GAS

MIN. WKI™

91

IGN. TIMING  
°BTDC

23

CARB ADJ.

0.35 CO

SERVICE  
HP/ kW

531/396

OVERLOAD  
HP/ kW

584/435

FIRING ORDER

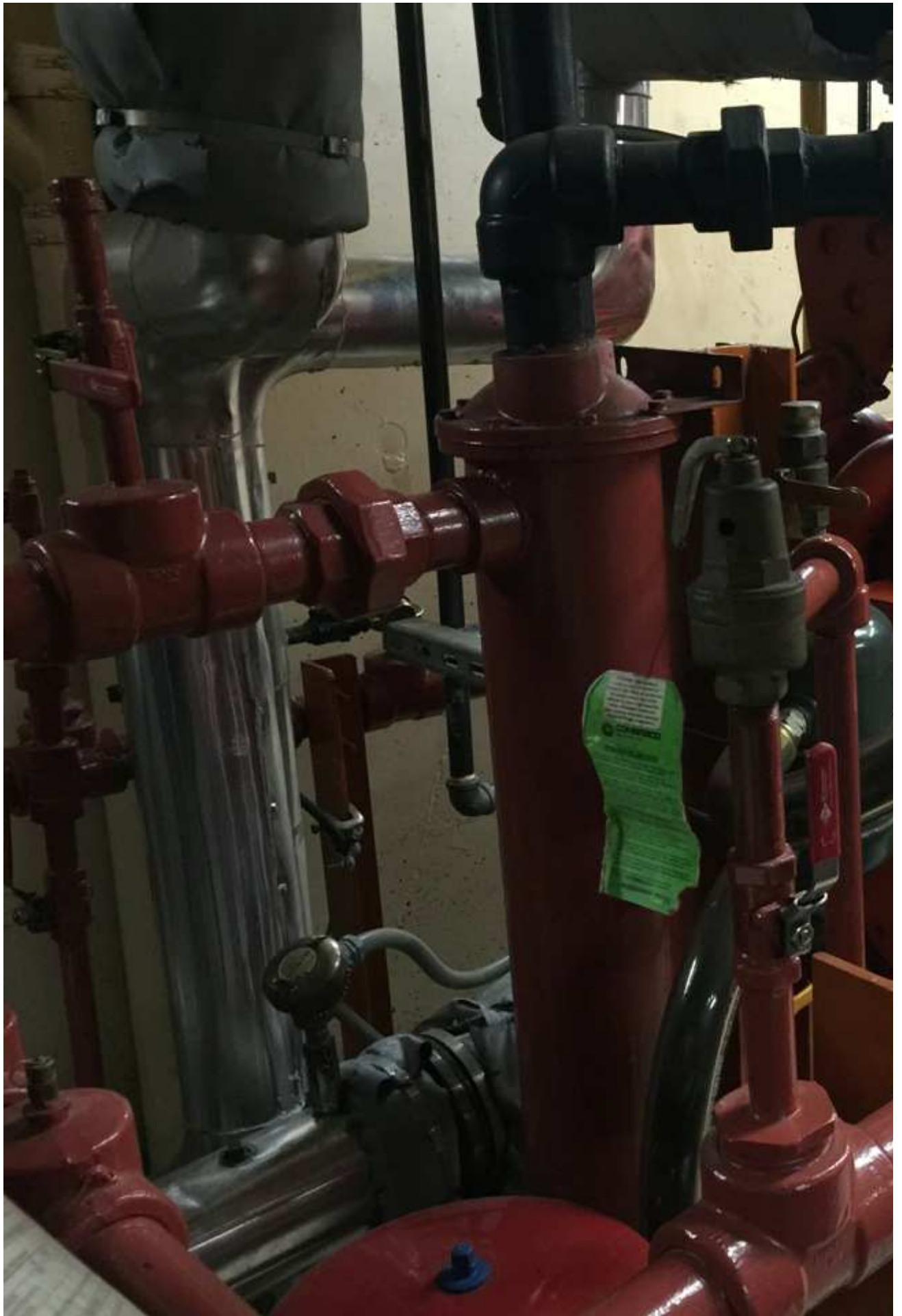
1-4-2-6-8-5-7-3

EMISSION

THIS ENGINE  
REQUIREMENT  
"STATIONARY  
USING THIS  
APPLICATION  
FEDERAL LA  
Displacement  
Max. BHP:   
REFER TO E  
SPECIFIC PO  
INFORMATI

Waukesha Engine







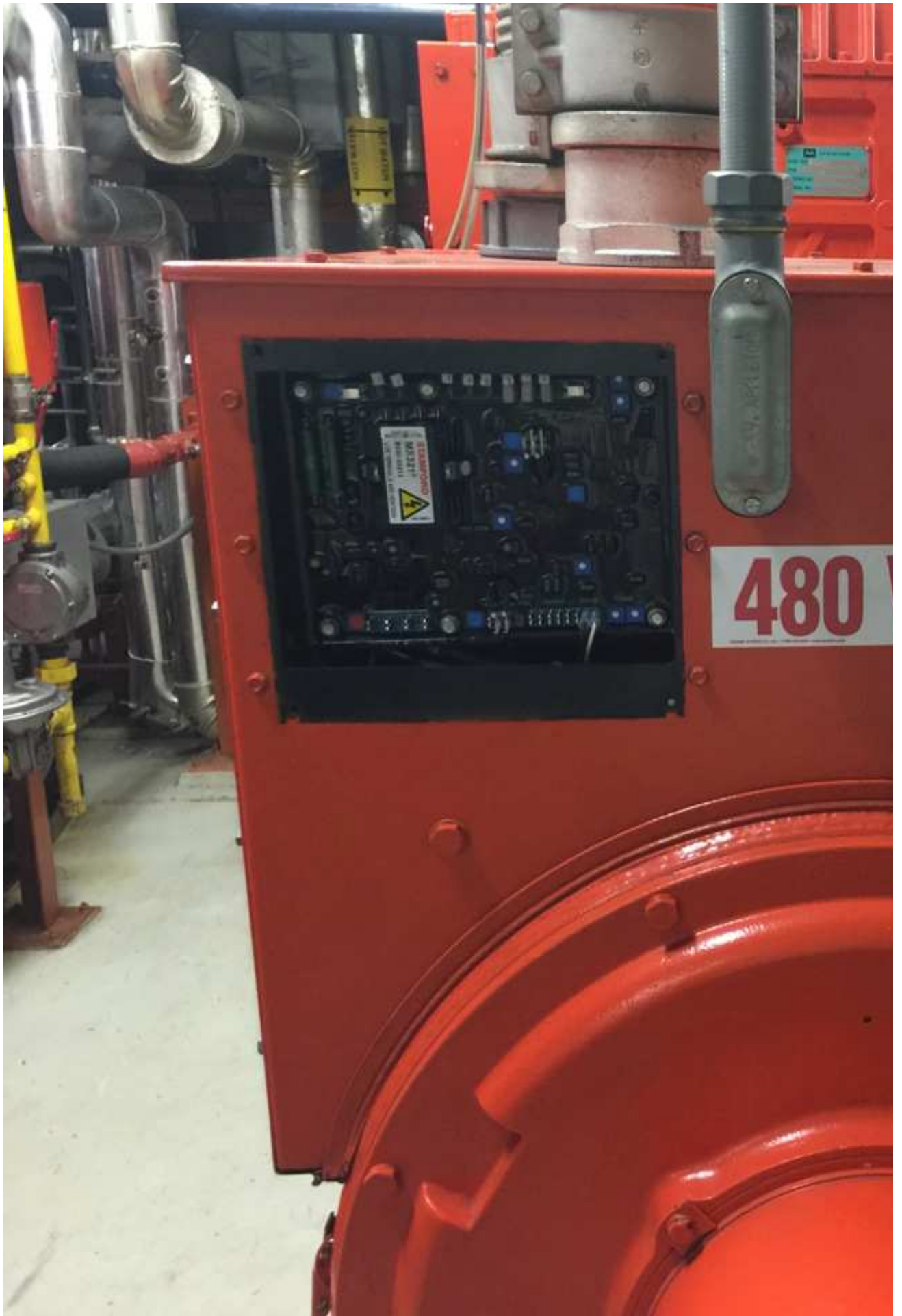
MO

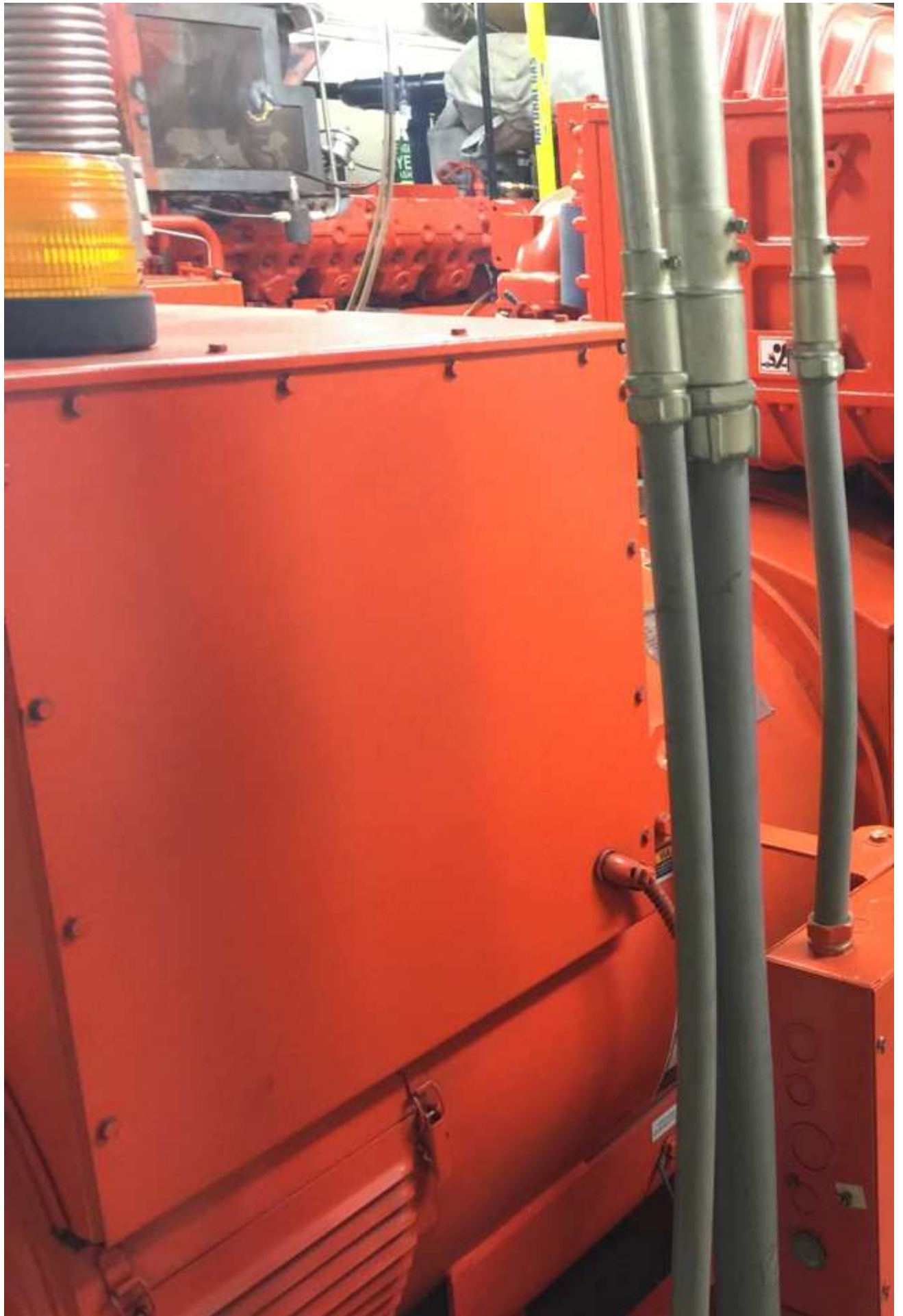
**CUST NO.** 305464

**FOR** WAIKESHA

**MODINE NO.** 1A158

**SERIAL NO.** 07300





# GENERATING

MODEL NO. VG24GSTD

SERIAL NO. C-34644-900/1

DATE AUG04

WEIGHT 12000 LBS

R.P.M. 1800 PHASE

VOLTS 480/277

HZ 60 P.F.

DUTY CONTINUOUS KW

KVA 469 AMPS

DUTY  KW

KVA  AMPS

MAXIMUM SITE ALTITUDE 150

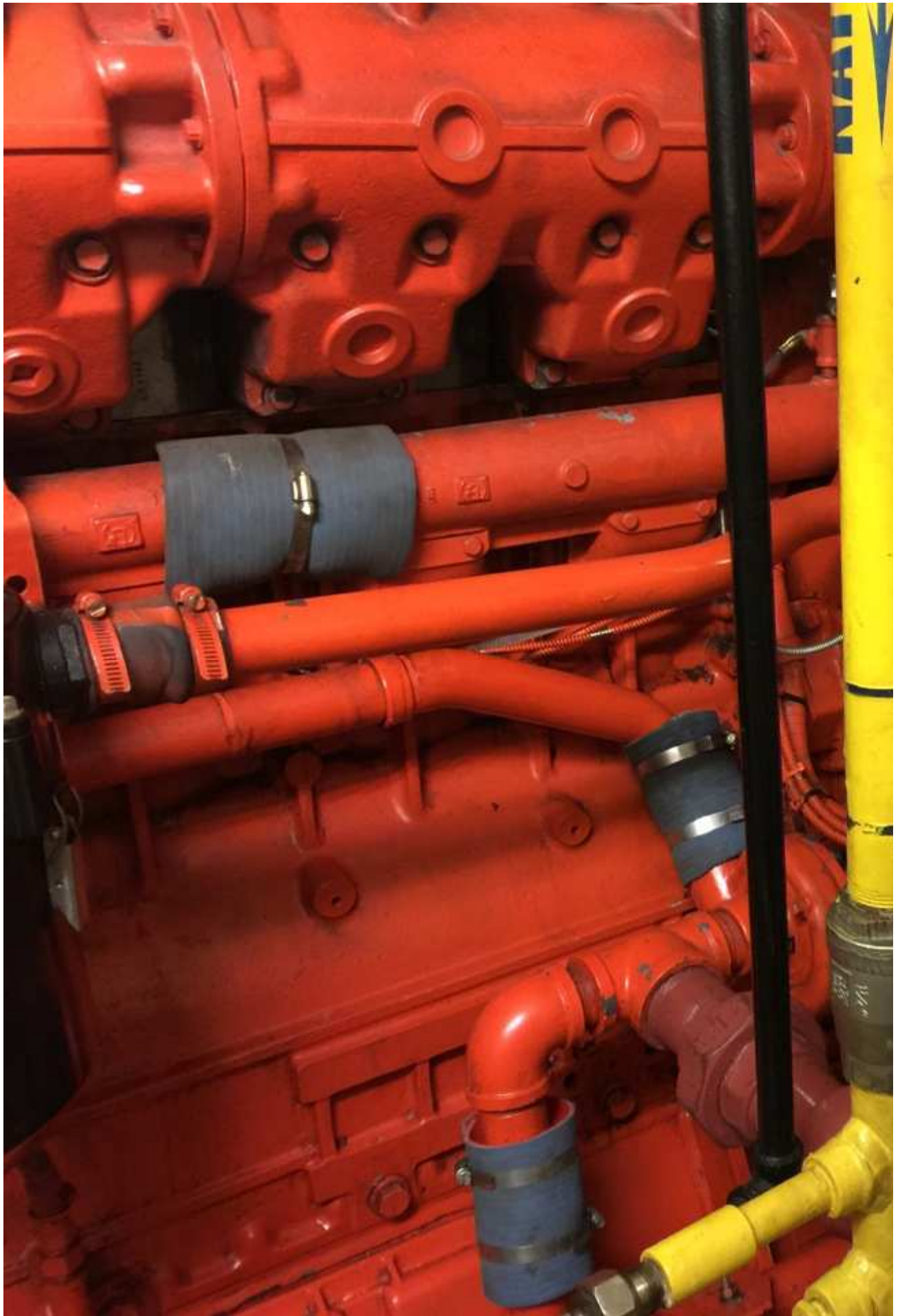
MAXIMUM AMBIENT TEMP. 100

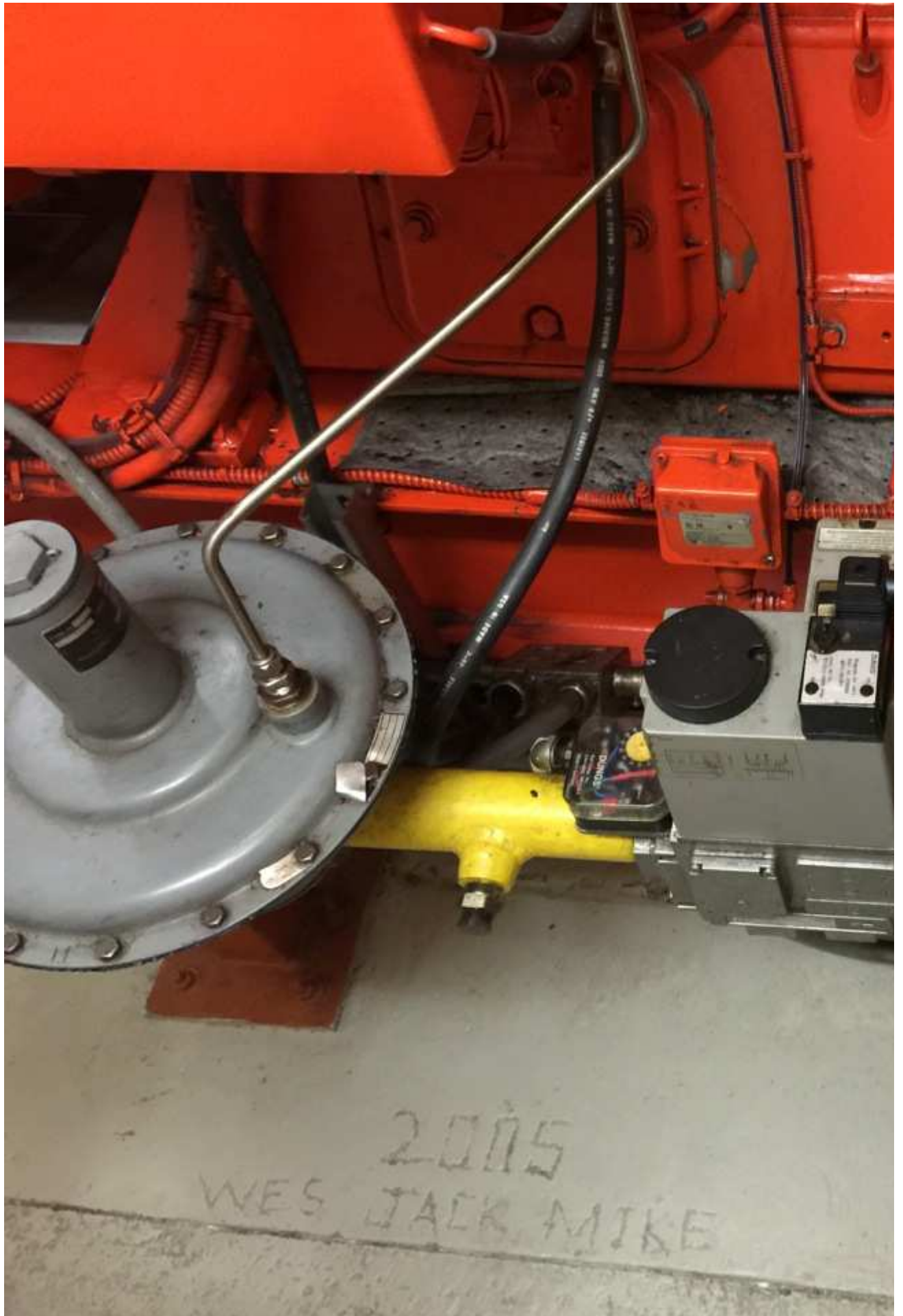
PERFORMANCE CLASS

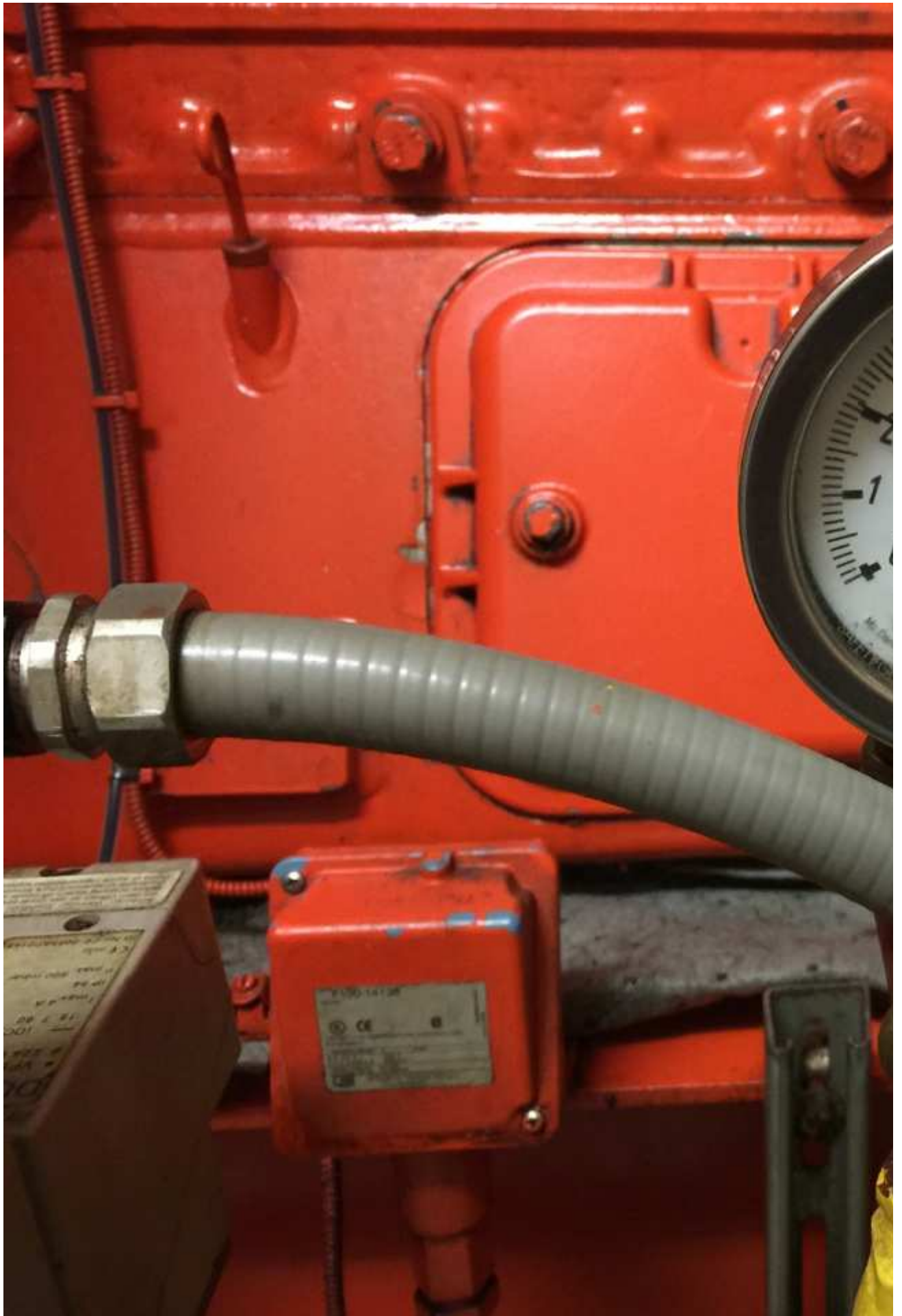
10 PERCENT OVERLOAD FOR 2

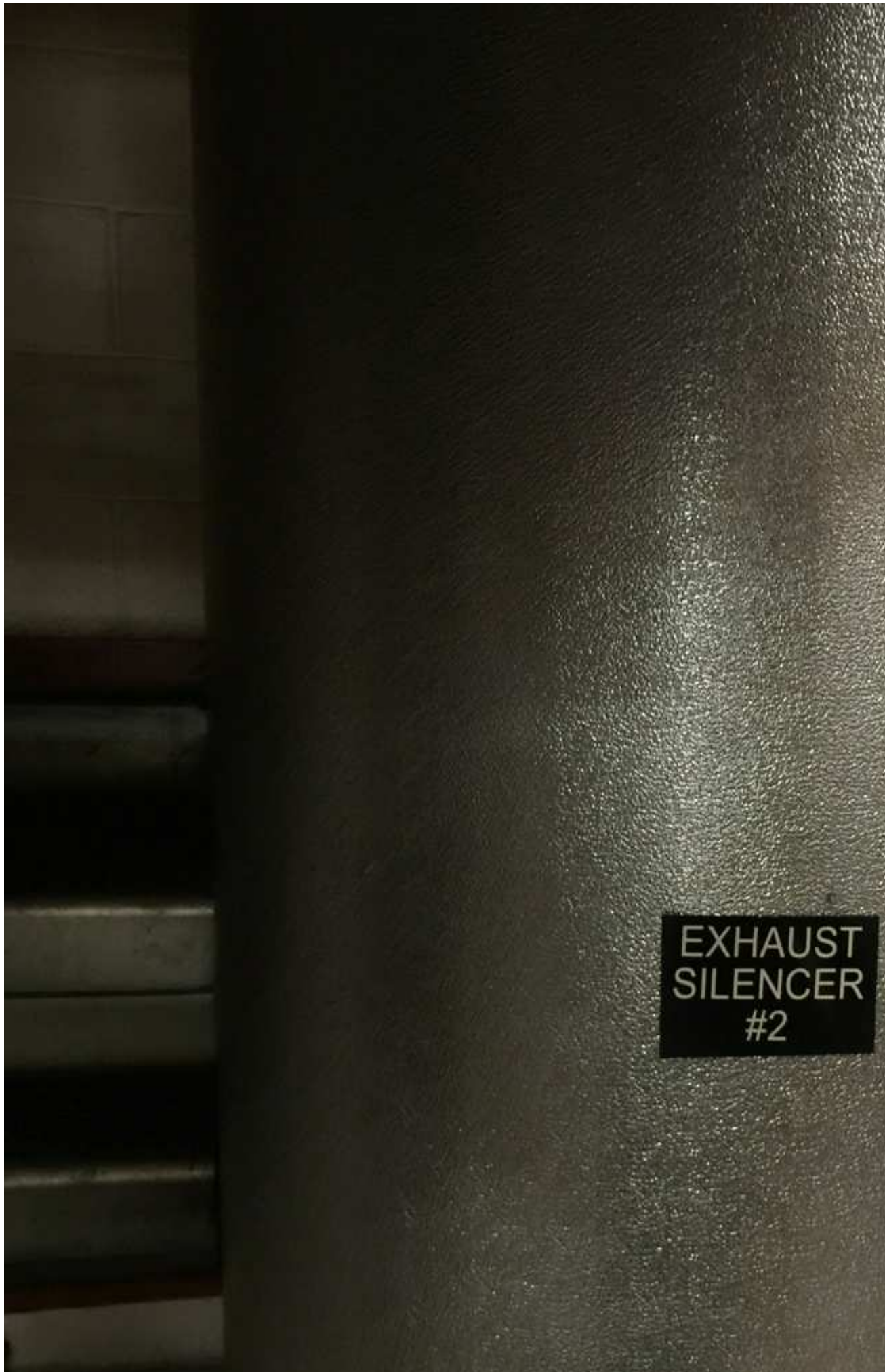
MIN EACH 24 HOUR PERIOD

















GENERATOR #2 PRO

COM 1

**M-3410A**  
**INTERTIE / GENERATOR**  
**PROTECTION**

*Integrated Protection Systems®*

BECKWITH  
ELECTRIC  CO. INC.  
Made in U.S.A.

FEEDER #2 INTERTIE

Integration Table  
Tested and Approved  
HTFS Job No.  
Checked by  
Signed by  
Date

COM 1

RELAY OK (green light)  
TIME SYNC

BRKR CLOSED (red light)  
OSC TRSQ

TARGET TARGET (green light)  
PS 2 PS 1

TARGET RESET

**M-3520**  
**INTERTIE PROTECTION**

*Integrated Protection Systems®*

BECKWITH  
ELECTRIC  CO. INC.  
Made in U.S.A.

↑  
←  
↓  
EXIT

HOUR METER



HOUR M



COGEN  
PARASITIC  
LOAD PANEL



ATS "X1"



ATS "X2"

Brien  
Tel: 950-816-6444  
EPC 24/7  
TEST DATE: 10/2013  
EMERGENCY ASSISTANCE  
800-668-8200 • 761-277-2882

**480 VOLTS**

Brien  
Tel: 950-816-6444  
EPC 24/7  
TEST DATE: 10/2013  
EMERGENCY ASSISTANCE  
800-668-8200 • 761-277-2882

