

3512C HD

TH55

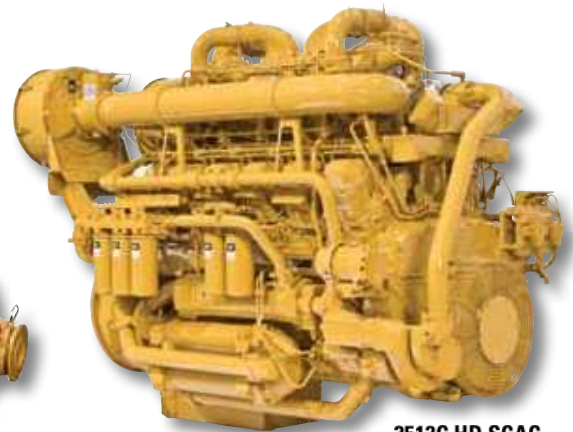
PETROLEUM POWER UNIT | 2 250 bhp (1 678 bkW) @ 1 900 rpm
2 500 bhp (1 864 bkW) @ 1 900 rpm

DIMENSIONS

	Engine	Transmission
Length	113.8 in (2880 mm)	86.62 in (2200 mm)
Width	64.2 in (1630 mm)	45.3 in (1150 mm)
Height	86.1 in (2185 mm)	50.72 in (1288 mm)
Weight	14,145 lb (6416 kg)	6,430 lb (2920 kg)

Weights and dimensions are approximations.

TH55-E70



3512C HD SCAC
Cooling System

3512C HD ENGINE – TH55 TRANSMISSION PACKAGE

Making Your Investment Work Harder

- Separate Circuit Aftercooler (SCAC)
 - Flexible cooling options
 - Compatible with industry-standard radiator
- Industry-leading power and torque capabilities optimized for fracturing applications
- Simplified controls and customer connection points decrease time to get up and running
- Optimized ambient and altitude capabilities for operating flexibility
- TH55 Petroleum Transmission:
 - Optimized for petroleum pumping applications
 - Evenly spaced gear ratios provides smooth shifting for pumping
 - Provides a much broader range of pumping speeds than the competition
 - Deep first gear ratio ideal for application flexibility, allows pumping at lower flow rates and pressure

Fully Integrated Petroleum Solutions

- Integrated engine and transmission provide optimal power train for well fracturing
- Extensive lab and field validation of engine and transmission
- Streamlined service
- Same warranty for engine, transmission, and any packaged options
- One-source supplier, one-source service

A Low Cost of Doing Business

- World-class reliability and durability
- Improved serviceability versus the competition
- Industry-leading overhaul life
- TH55 features a warm-up mode, which gets you up and running faster

Sustainable Development

- Meets emissions standards for land and offshore applications
 - Non-current EPA Tier 2, Marine Tier 2, and IMO Tier II Emissions
- Supported by Caterpillar extensive 3500 remanufacturing program

Improving Workforce Efficiency

- Entire power train uses Cat® Electronic Technician, easing service and troubleshooting
- State-of-the-art engine ADEM™ A3 control system and transmission control system improve operator interface
- Worldwide dealer network with more than 100,000 trained technicians means that parts and support are never out of reach

CAT, CATERPILLAR, their respective logos, ADEM, "Caterpillar Yellow" and the "Power Edge" trade dress, as well as corporate and product identity used herein, are trademarks of Caterpillar and may not be used without permission.

LEPW0022-01
©2011 Caterpillar
All rights reserved.

