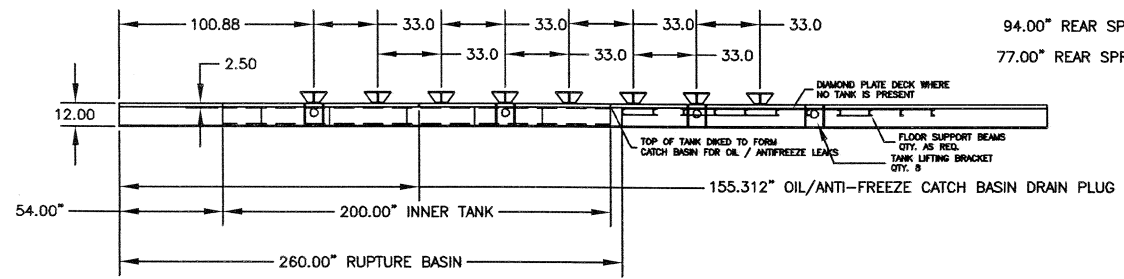
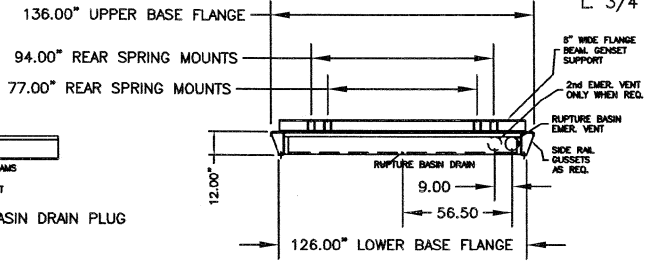


TOP VIEW



SIDE VIEW



RADIATOR END VIEW

- NOTES:
1. BAFFLE TO SEPARATE HOT & COLD SIDE OF TANK.
 2. SIDE & END CHANNEL - 7 GA. TANK TOP, BOTTOM, & END - 10 GA.
 3. BOTTOM TANK FLOOR SUPPORTS NOT SHOWN TIE ROD STIFFENERS NOT SHOWN.
 4. EXTERIOR: PRIME & PAINT BLACK INTERIOR: RUST PREVENTIVE COATING
 5. SUB BASE WEIGHT..... 11,090 LB. MAX
 6. ENGINE WET WEIGHT..... 40,000 LB. MAX ENGINE TYPE..... CUSTOMER DWG.
 7. OPTIONS (Check if req'd.)
 - HIGH/LOW LEVEL SWITCH
 - LEAK DETECTION SWITCH
 - REMOVABLE END CHANNEL
 - VENT/FILL/ALARM PACKAGE

*** DOUBLE WALL OPTIONS ***

 - OPEN TOP DIKED
 - CLOSED TOP DIKED/HYDROSHIELD
 - SECONDARY CONTAINMENT
- SEE OPTION SHEET FOR ADDITIONAL FEATURES
8. SPECIFICATIONS SUBJECT TO CHANGE WITHOUT NOTICE.

CUSTOMER APPROVAL

NAME: _____

DATE: _____

- FITTINGS:
- A. (2) 6" EMERGENCY VENT PER NFPA 30
 - B. 2" NPT LOCKABLE, RAISED MANUAL FILL CAP (W/ 8" PIPE RISER)
 - C. 1-1/2" LEVEL GAUGE
 - D. 2" NPT NORMAL VENT
 - E. 1" DIP TUBE-FUEL RETURN
 - F. 1" DIP TUBE-FUEL SUPPLY
 - G. 1-1/4" NPT W/PIPE PLUG
 - H. 2" NPT FOR HIGH/LOW LEVEL SWITCH
 - J. 2" NPT SENSOR/PUMP CONTROL FLOAT
 - K. 3/4" NPT OVERFLOW - PLUGGED
 - L. 3/4" NPT TANK FILL - PLUGGED

LETTER	DATE	DESCRIPTION	NAME
H	05/28/03	TANK FILL (L) WAS 3/8" NPT	EAJ
G	05/27/03	ADDED 4 LIFTING PLATES (8 TOTAL)	EAJ
F	05/27/03	"E" & "F" WERE 1/2" NPT	RDS
E	05/21/03	REVISED E-VENTS LOCATION AND ISO PADS	EAJ
D	05/16/03	ENLARGED CUSTOMER CONTROL STUB UP	EAJ
CHANGE BLOCK (S)			

TRAMONT CORPORATION

SCALE: NTS FRACTIONS = +/- .5 .XX = +/- .125 DRAWN BY: JDR

DATE: 02/20/03 .X = +/- .250 .XXX = +/- .062 SALES: ENG

THIS DESIGN IS THE CONFIDENTIAL PROPERTY OF TRAMONT CORPORATION. FOR USE BY TRAMONT CORPORATION CUSTOMERS FOR SUBMITTAL PURPOSES ONLY. COPYRIGHT TRAMONT CORPORATION, 1997.

DESCRIPTION: UTSS-600 SUB BASE TANK

FOR: ALPHA POWER

DRAWING NO. 119-5521



