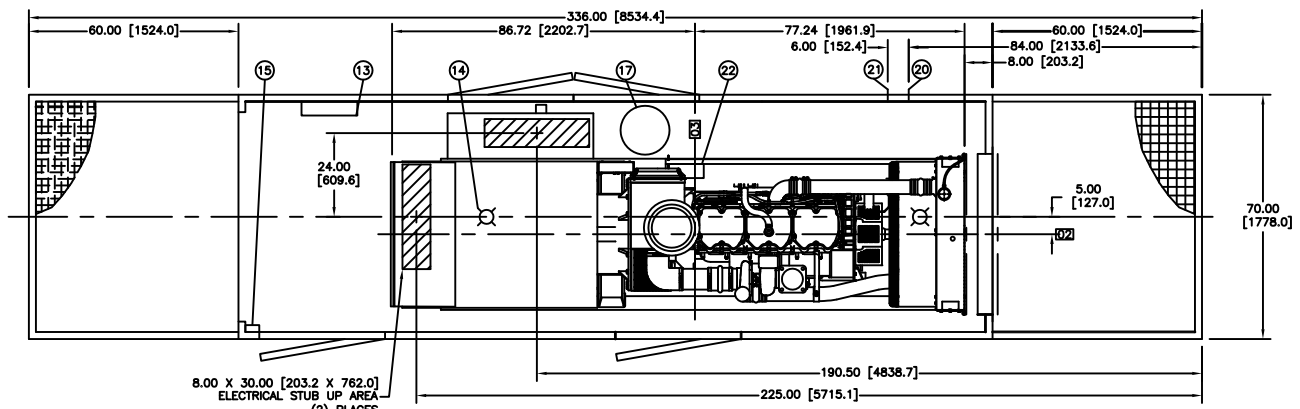
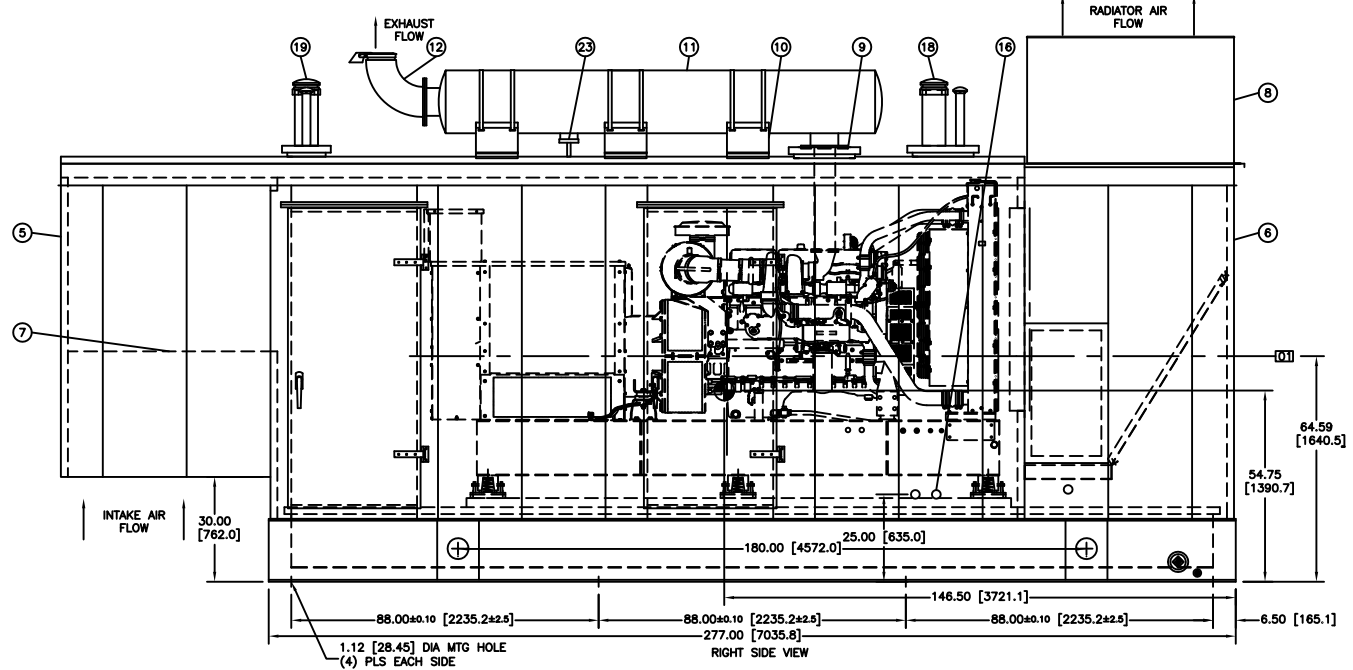


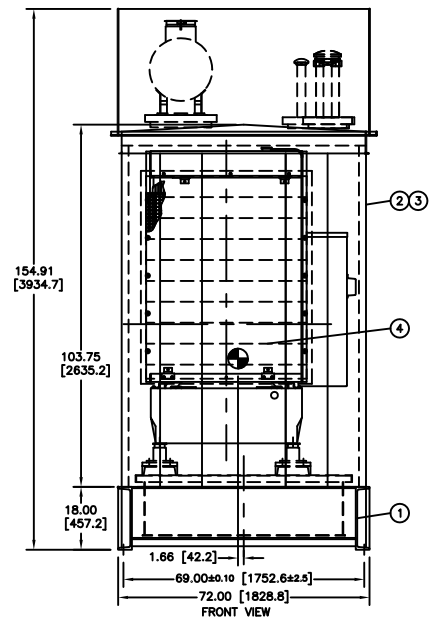
03-15382		CDIBPNECCOEE28	
COMP	QTY	DESCRIPTION	
1	1	1000 GALLON UL 142 FUEL TANK WITH SECONDARY CONTAINMENT FULL STEEL FLOOR 4 POINT LIFT PROVISIONS LEAK LOW AND HIGH ALARMS AND PUMP CONTROL SWITCHES	
2	1	ENCLOSURE 70W X 104L X 336H WITH (4) GASKETED LOCKABLE ACCESS DOORS AND INSIDE OPERATORS	
3	1	SOUND INSULATION WITH GALVANIZED PERFORATED LINER	
4	1	GRAVITY DISCHARGE LOUVER	
5	1	SOUND ATTENUATING INTAKE PLENUM	
6	1	SOUND ATTENUATING DISCHARGE PLENUM	
7	1	INTAKE SOUND MODULE 36H MPD WITH SCREEN	
8	1	DISCHARGE SOUND MODULE 36H LPD WITH SCREEN (SHIP LOOSE)	
9	1	EXHAUST FLEX CONNECTION AND ROOF DRESS CAP	
10	3	EXHAUST SILENCER MOUNTING BRACKETS (SHIP LOOSE)	
11	1	EXHAUST SILENCER 8" CRITICAL GRADE (SHIP LOOSE)	
12	1	EXHAUST ELBOW AND RAIN CAP (SHIP LOOSE)	
13	1	LOAD CENTER 240/120V SINGLE PHASE	
14	2	INCANDESCENT LIGHTS 120VAC WITH (1) WALL SWITCHES	
15	1	GFI PROTECTED DUPLEX RECEPTACLES	
16	1	OIL WATER AND FUMES DISPOSAL GROUP	
17	1	MANUAL FUEL FILL WITH 5 GALLON SPILL CONTAINMENT	
18	1	ROOF MOUNTED FUEL TANK VENT GROUP	
19	1	ROOF MOUNTED BASIN VENT GROUP	
20	1	FUEL TANK SUPPLY 1.00 NPT	
21	1	FUEL TANK OVERFLOW 1.00 NPT	
22	1	TANK MONITOR PANEL	
23	1	RED FLASHING BEACAN	



PLAN VIEW OF ENCLOSURE



RIGHT SIDE VIEW



FRONT VIEW

⊙ = CENTER OF GRAVITY

- NOTES:
- CAT 3456 LE-7275 500KW GEN SET SHOWN WITH REAR MOUNTED CA2357 800AMP BREAKER AND LEFT HAND MOUNTED CA2575 800AMP BREAKER
 - CALDYN RUEQ-A-2120 VIBRATION ISOLATORS SHOWN
 - APPROXIMATE SOUND LEVEL 50 DBA @ 150 FT (FREE FIELD)
 - APPROXIMATE DRY WEIGHT OF PACKAGE = 30,000 LB
 - RECOMMEND MINIMUM OF 60.00 [1524.0] BETWEEN THE ENCLOSURE AND ANY OTHER STRUCTURE FOR PROPER VENTILATION. REFER TO LOCAL CODE AND/OR ORDINANCE FOR ANY FURTHER RESTRICTIONS.

EST. SHIPPING DIMENSIONS
 WIDTH - 76.00 [1930.4]
 HEIGHT - 126.00 [3200.4]
 LENGTH - 340.00 [8636.0]

ENCLOSURE PACKAGE FOR CAT 3456 GEN SET

THIS PRINT IS THE PROPERTY OF CHILICOTHE METAL CO AND MUST NOT BE USED IN ANY MANNER DETRIMENTAL TO THEIR INTERESTS.		Chilicotho Metal Co. 4507 E. ROME ROAD CHILICOTHE, IL 61523 PH. 309-274-5421 FAX 309-274-4886 WEBSITE: WWW.CMCOUSA.COM	
UNLESS OTHERWISE SPECIFIED	DATE	W.O. #	03-15382
DIMENSIONS ARE IN INCH (MM)	DR. COX	DATE: 11/28/03	ENGR. FILE: GD
DIMENSIONS WITHOUT TOLERANCE ARE BASIC	CHKD. BESSLER	DATE: 11/28/03	SCALE: 1=50 SHIT 1 OF 1
DWG. #		CDIBPNECCOEE28	
REVISION RECORD			