

Document No.: G19236403211000A001

The undersigned, representing the following manufacturer:  
Il sottoscritto, rappresentante il seguente costruttore:

Manufacturer: Costruttore:	TECNOGEN SPA
Address: Indirizzo:	STRADA PER PONTE RIGLIO, 25 - 29010 PONTENURE (PC) - ITALIA

herewith declares that the product:  
dichiara qui di seguito che il prodotto:

Product identification: Automatic Switchboard For Emergency Generating Set <i>Identificazione del Prodotto: Quadro automatico di controllo per gruppo elettrogeno</i>	
Low voltage switchgear and controlgear assemblies (L.V. Switchboard) <i>Apparecchiatura assemblata di protezione e di manovra per bassa tensione (quadro BT)</i>	
Type designation: Serie:	DSE 8610 DSE 8610
Serial number of product: Numero di serie del prodotto:	G19236403211000A001 G19236403211000A001
Type of product: Tipo di Prodotto:	PTTA ANS
Drawing number: N° Disegno:	BR-Q8610U000600100004 BR-Q8610U000600100004

is in conformity with the following standard and/or technical specifications:  
risulta in conformità a quanto previsto dalle norme di prodotto e/o specifiche tecniche di seguito elencate:

Directive Direttiva	Title Titolo
Directive 2014/30/CE Direttiva 2014/30/CE	Directive 2014/30/CE of the European Parliament and Council of 26 February 2014 concerning the reconciliation of laws of member States relating to electromagnetic compatibility. <i>Direttiva 2014/30/CE del Parlamento Europeo e del Consiglio del 26 Febbraio 2014 concernente il riavvicinamento delle legislazioni degli Stati membri relative alla compatibilità elettromagnetica.</i>
Directive 2014/35/CE Direttiva 2014/35/CE	Directive 2014/35/CE of the European Parliament and Council of 26 February 2014 concerning the reconciliation of laws of member States relating to electric materials destined for use within certain voltage limits. <i>Direttiva 2014/35/CE del Parlamento Europeo e del Consiglio del 26 Febbraio 2014 concernente il riavvicinamento delle legislazioni degli Stati membri relative al materiale elettrico destinato ad essere adoperato entro taluni limiti di tensione.</i>

Standard Norma	Part Parte	Title Titolo
EN 61439	1	Low-voltage switchgear and controlgear assemblies - Part 1: General rules <i>Apparecchiature assemblate di protezione e di manovra per bassa tensione (quadri BT) - Parte 1: Regole generali</i>
CEI EN 61439	2	Low-voltage switchgear and controlgear assemblies - Part 2: Power switchgear and controlgear assemblies <i>CEI EN 61439-2 (CEI 17-114) Apparecchiature assemblate di protezione e di manovra per bassa tensione (quadri BT) - Parte 2: Quadri di potenza</i>

Pontenure li, 30/04/2021  
Place and date/Luogo e data

The General Director/Il Direttore Generale  
(Renato Bruno)




Signature/Firma

# FTG VO1250FQ-30 2000A

## 2000A 480V/277V- 60HZ 24V

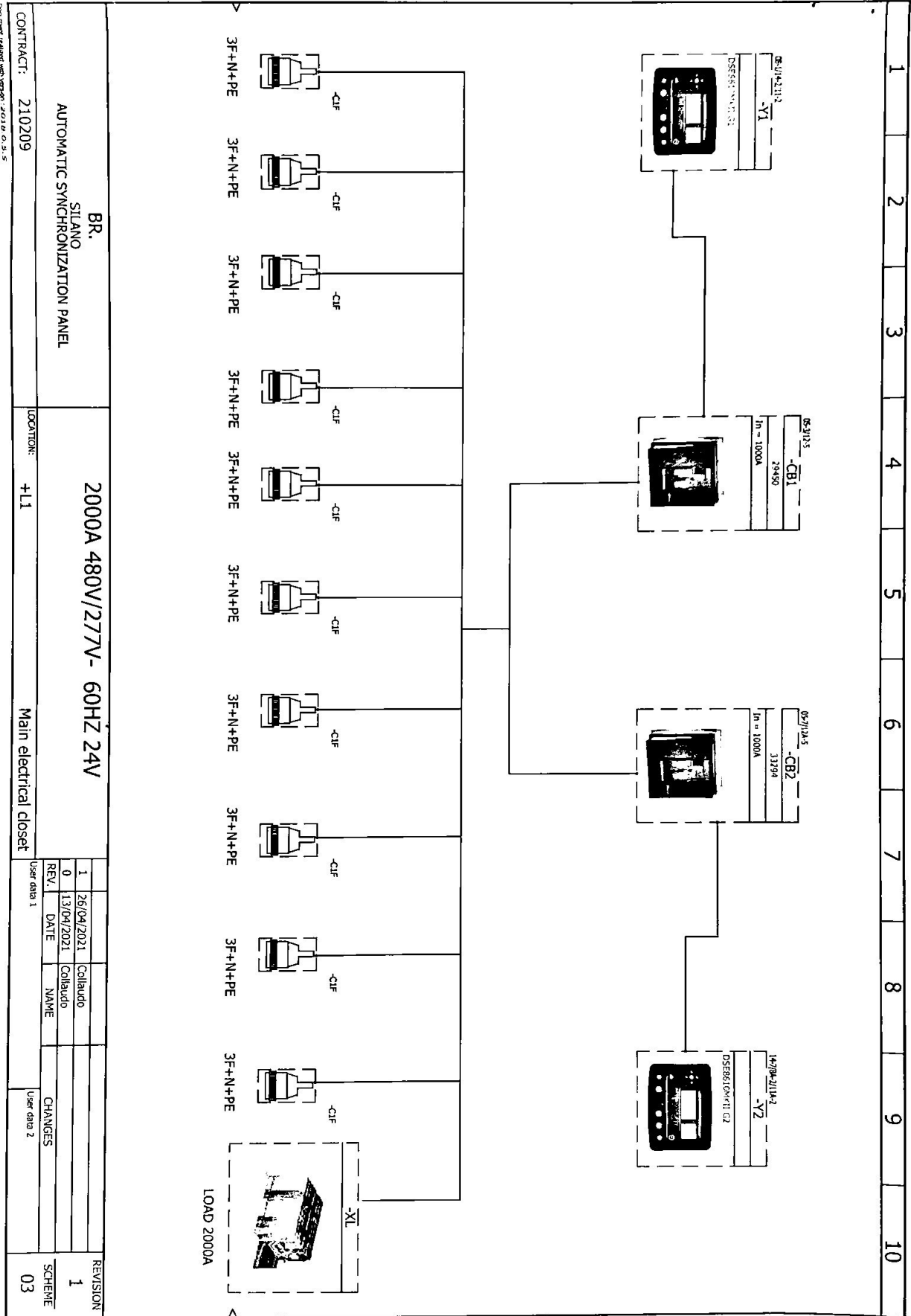
REV.	DATE	NAME	CHANGES	BR.	REVISION
1	26/04/2021	Colinda			
0	13/04/2021	Colinda			
<b>TECNOGEN SPA</b> FQ1208V-TW 2000A 480/277V- 60HZ 24VDC DSE8610MKIT					
			AUTOMATIC SYNCHRONIZATION PANEL CONTRACT : 210209	SILANO User data 1 User data 2	1 SCHEME 01

1-2000A 480V/277V- 60HZ 24V

Drawing	Function	Location	Revision	Date	Created by	Description	Folder designation
01	=F1	+L1	0	13/04/2021	Collaudo	Cover page	
02	=F1	+L1	0	13/04/2021	Collaudo	Drawings kit	
03	=F1	+L1	0	13/04/2021	Collaudo	Wiring line diagram	
04	=F1	+L1	0	13/04/2021	Collaudo	generator G1/G2	
05	=F1	+L1	0	13/04/2021	Collaudo	Power circuit GEL-GE2	
06	=F1	+L1	0	13/04/2021	Collaudo	Kit camlock	
07	=F1	+L1	0	14/04/2021	Collaudo	Kit camlock 2	
08	=F1	+L1	0	13/04/2021	Collaudo	Reference GEL-BUS	
08A	=F1	+L1	0	13/04/2021	Collaudo	reference GE2-BUS	
10	=F1	+L1	0	13/04/2021	Collaudo	Supply CB+ aux	
11	=F1	+L1	0	13/04/2021	Collaudo	input/output G1	
11A	=F1	+L1	0	13/04/2021	Collaudo	input/output G2	
12	=F1	+L1	0	13/04/2021	Collaudo	command Q1 / avr G1	
12A	=F1	+L1	0	13/04/2021	Collaudo	command Q2/avr G2	
13	=F1	+L1	0	13/04/2021	Collaudo	Control p CR04S2	
14	=F1	+L1	0	13/04/2021	Collaudo	bus communication	
15	=F1	+L1	0	13/04/2021	Collaudo	Fan power diagram	
16	=F1	+L1	0	13/04/2021	Collaudo	Fan power diagram extraction	
17	=F1	+L1	0	13/04/2021	Collaudo	Fan G1	
18	=F1	+L1	0	13/04/2021	Collaudo	Fan G2	
19	=F1	+L1	0	13/04/2021	Collaudo	LIGHT SHETLER	
20	=F1	+L1	0	14/04/2021	Collaudo	engine diagram G1	
21	=F1	+L1	0	14/04/2021	Collaudo	engine diagram G2	
22	=F1	+L1	0	15/04/2021	Collaudo	-X1->XALX G1	
23	=F1	+L1	0	15/04/2021	Collaudo	XALX G2-(1/1)	
24	=F1	+L1	0	15/04/2021	Collaudo	Bill Of Materials grouped by manufacturer	
25	=F1	+L1	0	15/04/2021	Collaudo	Bill Of Materials grouped by manufacturer	

SOLIDWORKS Electrical

<b>BR. SILANO</b> <b>AUTOMATIC SYNCHRONIZATION PANEL</b>		<b>2000A 480V/277V- 60HZ 24V</b>		REVISION <b>1</b>
CONTRACT: 210209		LOCATION: +L1		SCHEME <b>02</b>
Main electrical closet		REV. 1 26/04/2021 Collaudo	REV. 0 13/04/2021 Collaudo	CHANGES User data 1 User data 2



BR.  
SILANO  
AUTOMATIC SYNCHRONIZATION PANEL

2000A 480V/277V- 60HZ 24V  
LOCATION: +L1  
Main electrical closet

REV.	DATE	NAME	CHANGES
1	26/04/2021	Collaudo	
0	13/04/2021	Collaudo	

REVISION  
1  
SCHEME  
03

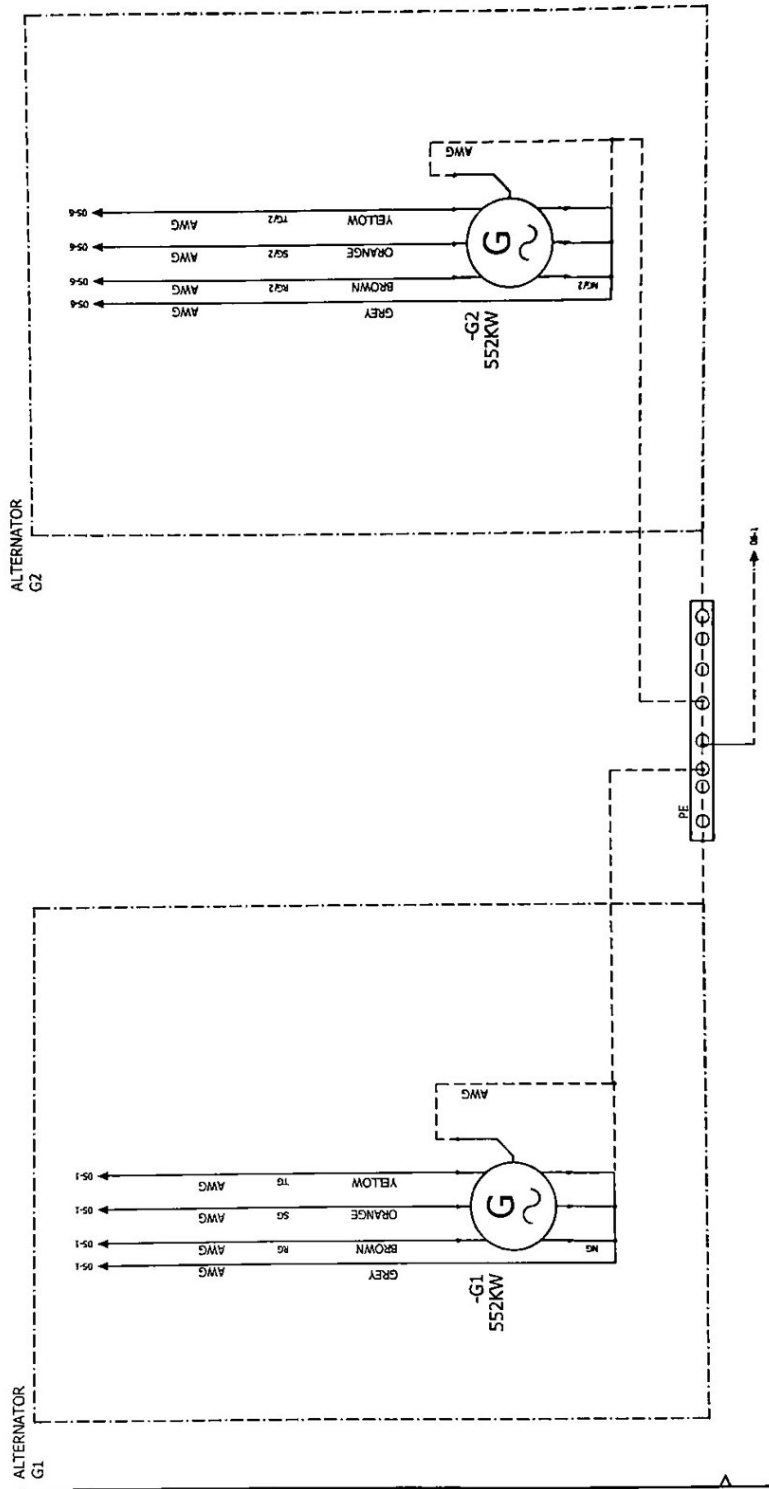
CONTRACT: 210209

User data 1

User data 2

Document released with version: 3.0.1.0 of 3.5

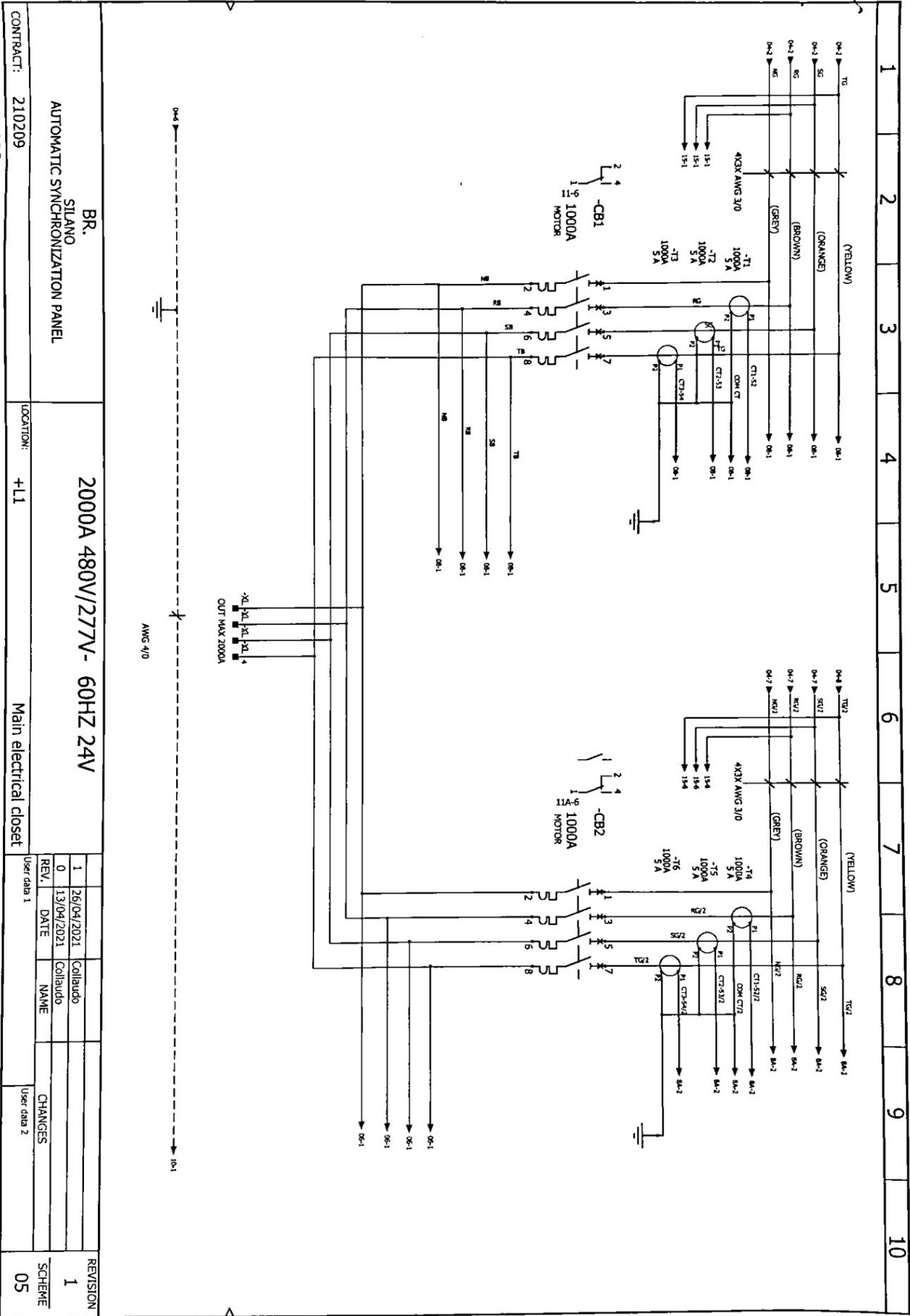
1 2 3 4 5 6 7 8 9 10



SOLIDWORKS Electrical

BR. SILANO AUTOMATIC SYNCHRONIZATION PANEL		2000A 480V/277V- 60HZ 24V		REVISION 1	
CONTRACT: 210209		LOCATION: +L1		SCHEME 04	
Main electrical closet		User data 1		User data 2	
1	26/04/2021	Collaudo	Collaudo	CHANGES	
0	13/04/2021	Collaudo	Collaudo	NAME	
REV.	DATE	NAME	NAME		

Document released with version: 4.01 B.O. S. 5



BR.  
SILANO  
AUTOMATIC SYNCHRONIZATION PANEL

2000A 480V/277V- 60HZ 24V  
+L1  
Main electrical closet

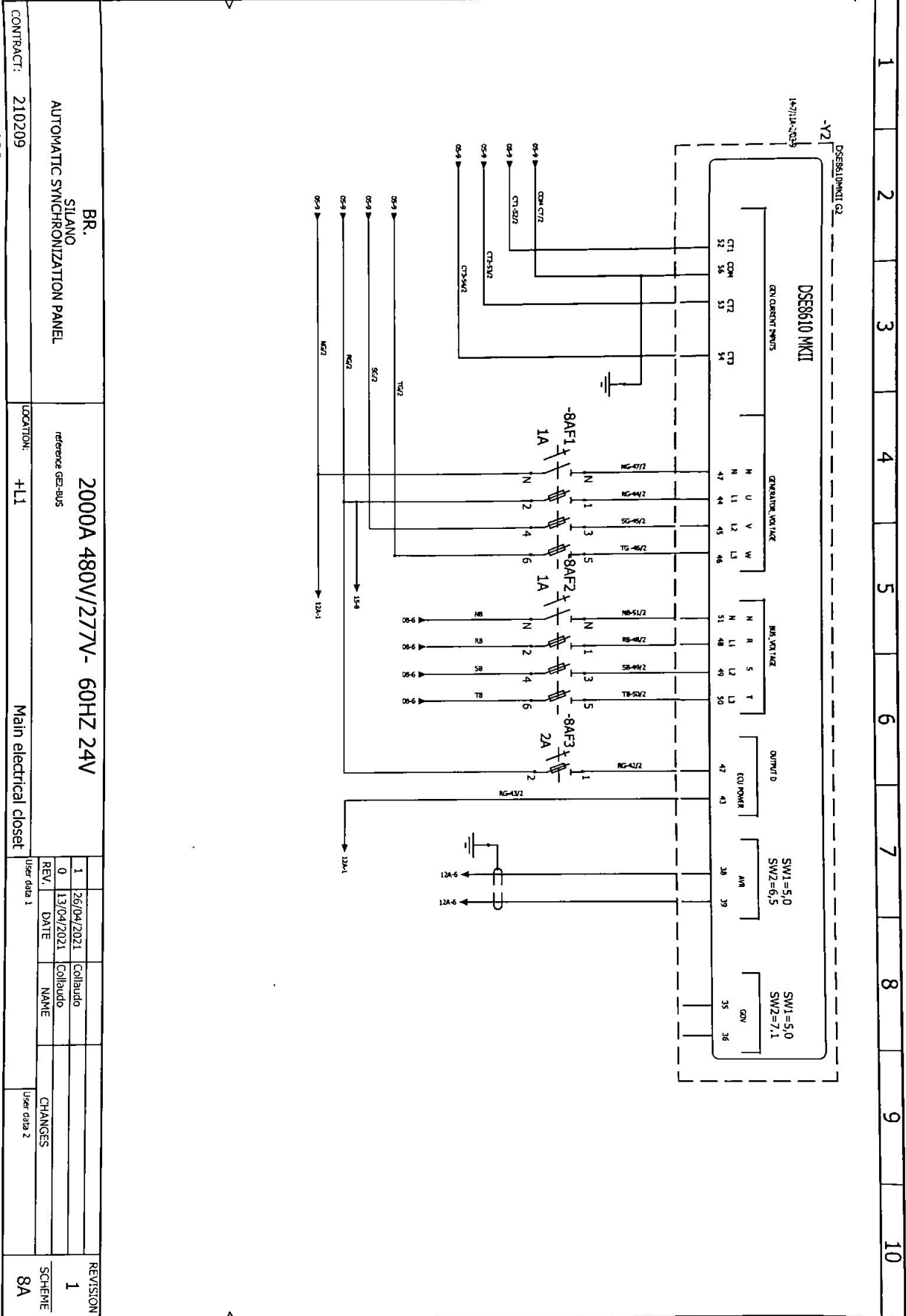
REV.	DATE	NAME	CHANGES
1	26/04/2021	Collaudo	
0	13/04/2021	Collaudo	

REVISION 1  
SCHEME 05

CONTRACT: 210209 LOCATION: +L1 User data 1 User data 2

Document created with version: 2016.0.5.5





CONTRACT: 210209

LOCATION: +L1

Main electrical closet

User data 1

User data 2

REVISION 1

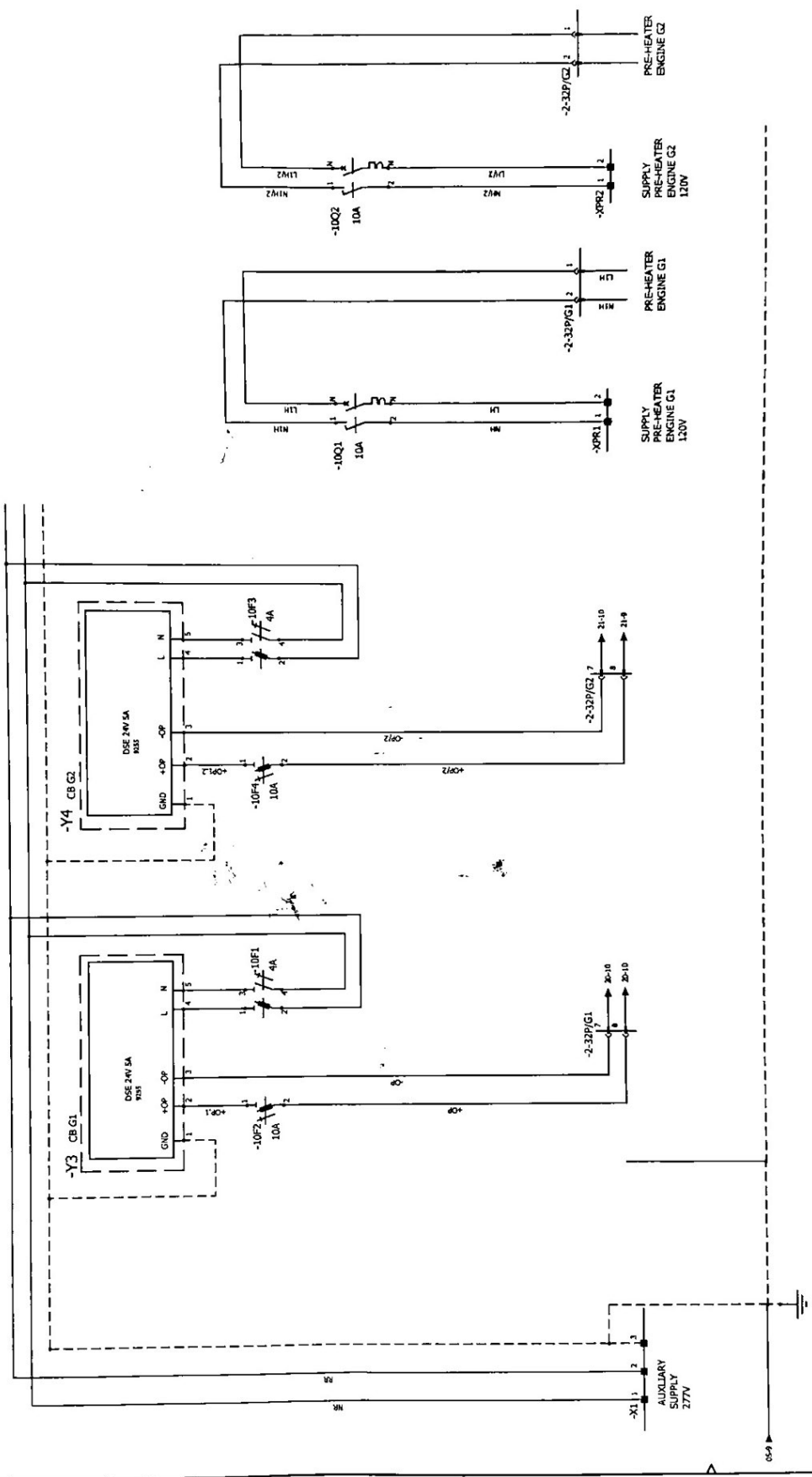
CHANGES

8A

Document released with version 2018.0.5.5



1 2 3 4 5 6 7 8 9 10



SOLIDWORKS Electrical

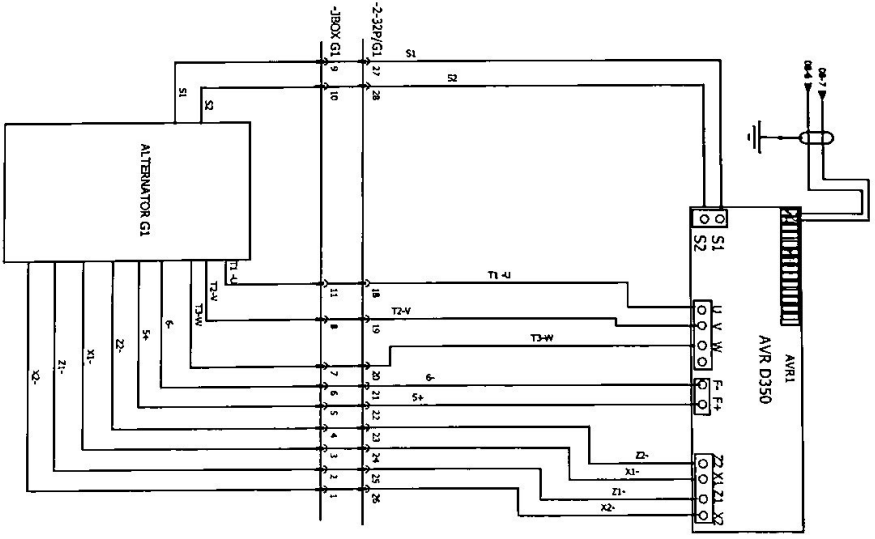
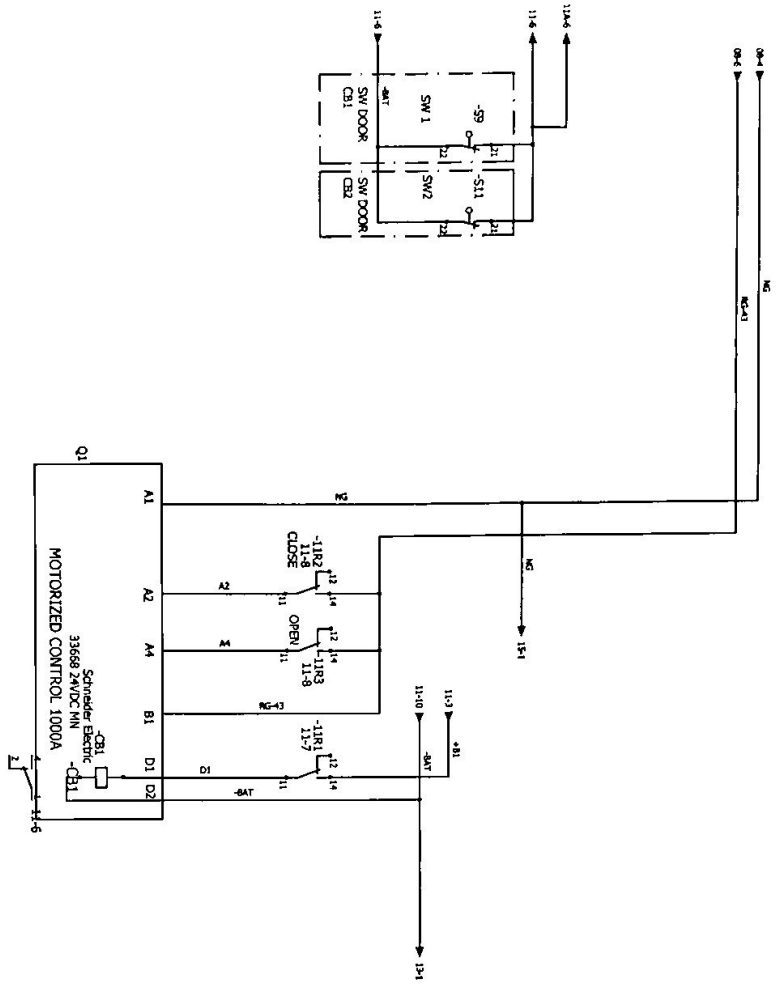
BR. SILANO AUTOMATIC SYNCHRONIZATION PANEL		2000A 480V/277V- 60HZ 24V		REVISION 1	
CONTRACT: 210209		LOCATION: +L1		SCHEME 10	
Main electrical closet		User data 1		User data 2	
REV. 0	DATE 13/04/2021	Collaudo	Collaudo	CHANGES	
REV. 1	DATE 26/04/2021	Collaudo	Collaudo		

Document created with version 4.0.1 H.O.S. 5





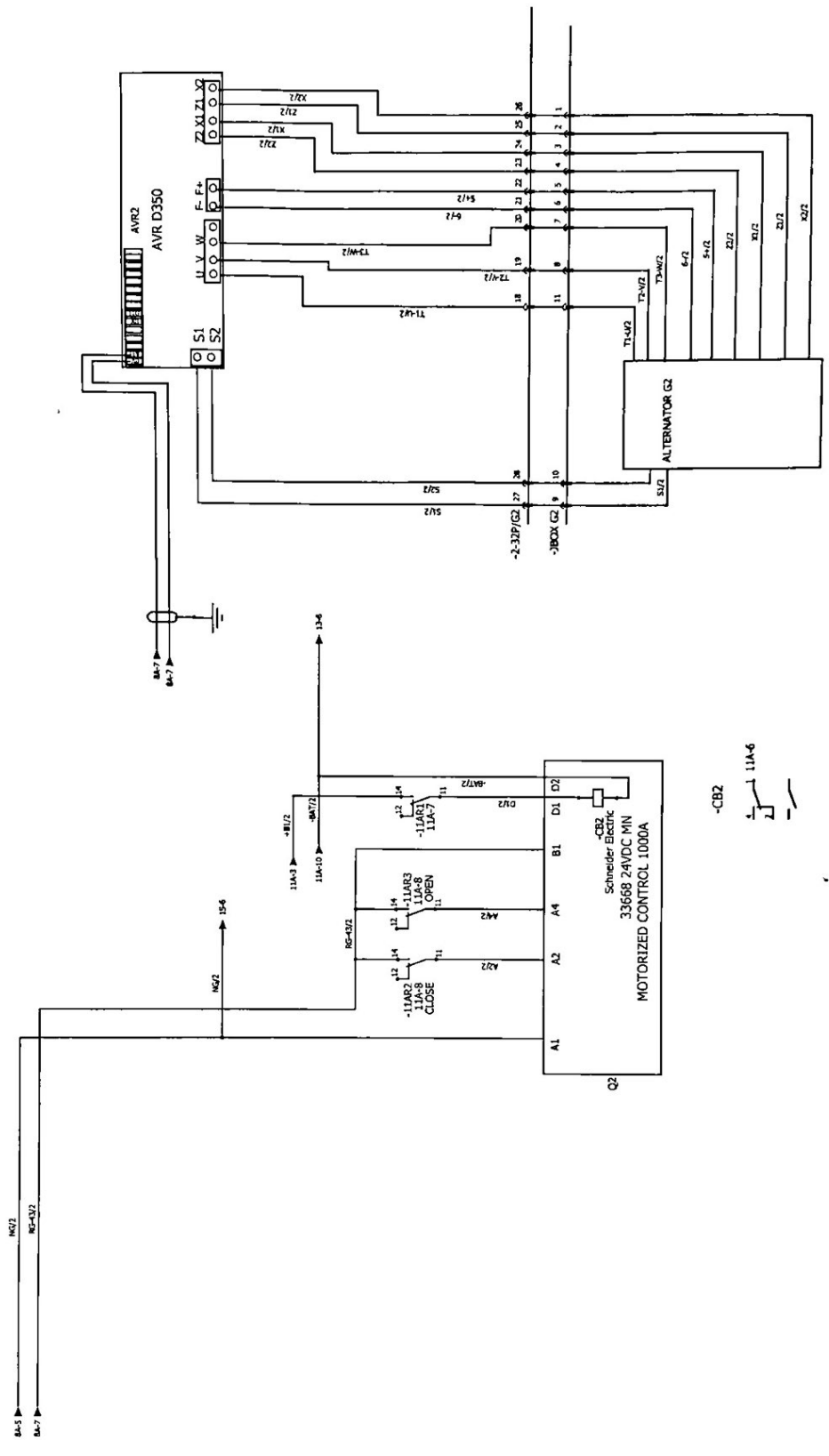
1 2 3 4 5 6 7 8 9 10



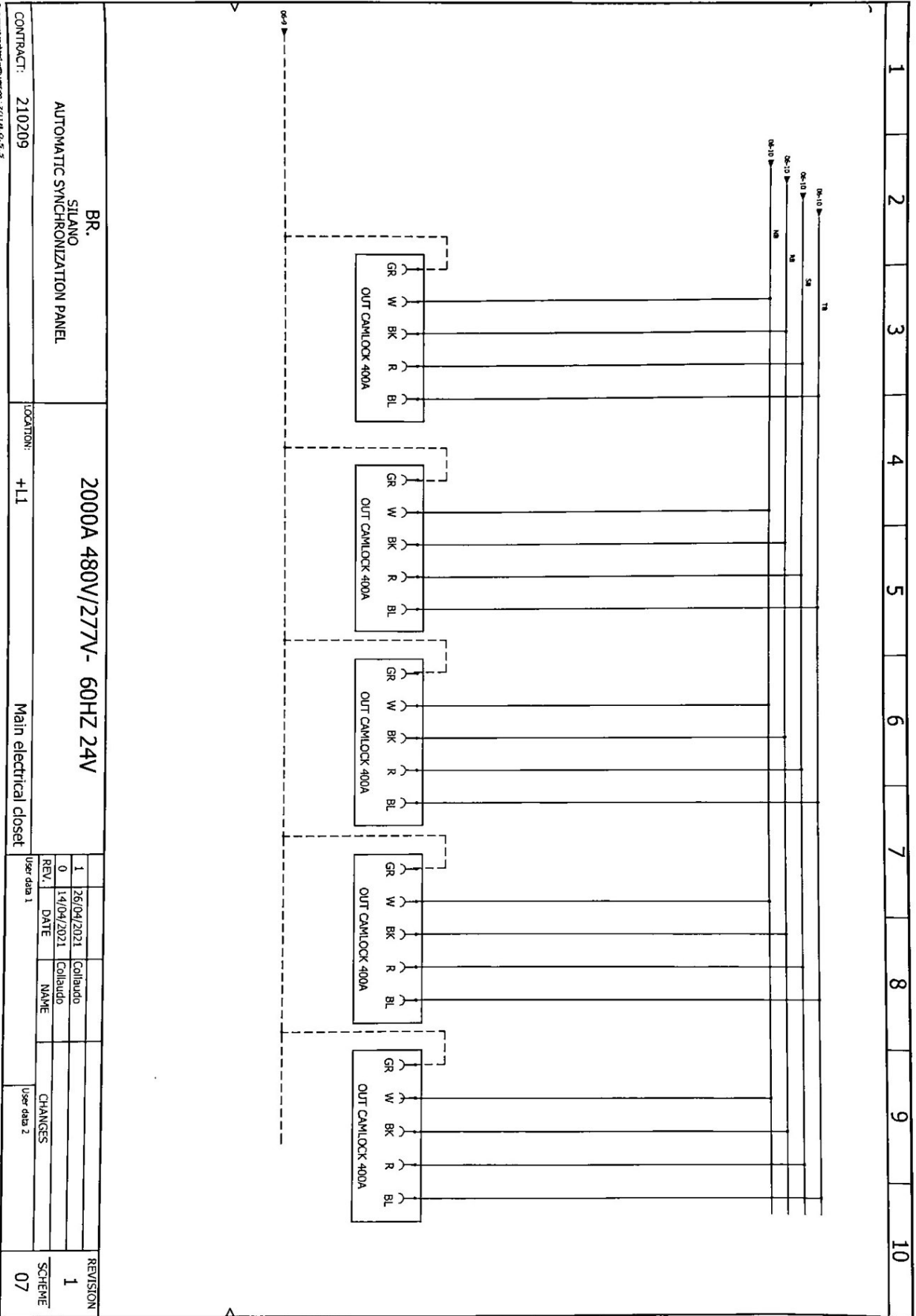
BR. SILANO		2000A 480V/277V- 60HZ 24V		REVISION	
AUTOMATIC SYNCHRONIZATION PANEL				1	
CONTRACT: 210209	LOCATION: +L1	Main electrical closet		CHANGES	
				User data 1	
				User data 2	
				SCHEME	
				12	

Document released upon request 2016.03.5

1 2 3 4 5 6 7 8 9 10



BR. SILANO AUTOMATIC SYNCHRONIZATION PANEL		2000A 480V/277V- 60HZ 24V		REVISION 1	
CONTRACT: 210209		LOCATION: +1.1		1 26/04/2021 Collaudo	
AUTOMATIC SYNCHRONIZATION PANEL		Main electrical closet		0 13/04/2021 Collaudo	
MOTORIZED CONTROL 1000A		+1.1		REV. DATE NAME	
Schneider Electric 33668 24VDC MIN		Main electrical closet		CHANGES	
Circuit breaker (CB2)		+1.1		User data 2	
MOTORIZED CONTROL 1000A		+1.1		SCHEME 12A	
Schneider Electric 33668 24VDC MIN		+1.1		User data 1	
Circuit breaker (CB2)		+1.1		User data 2	



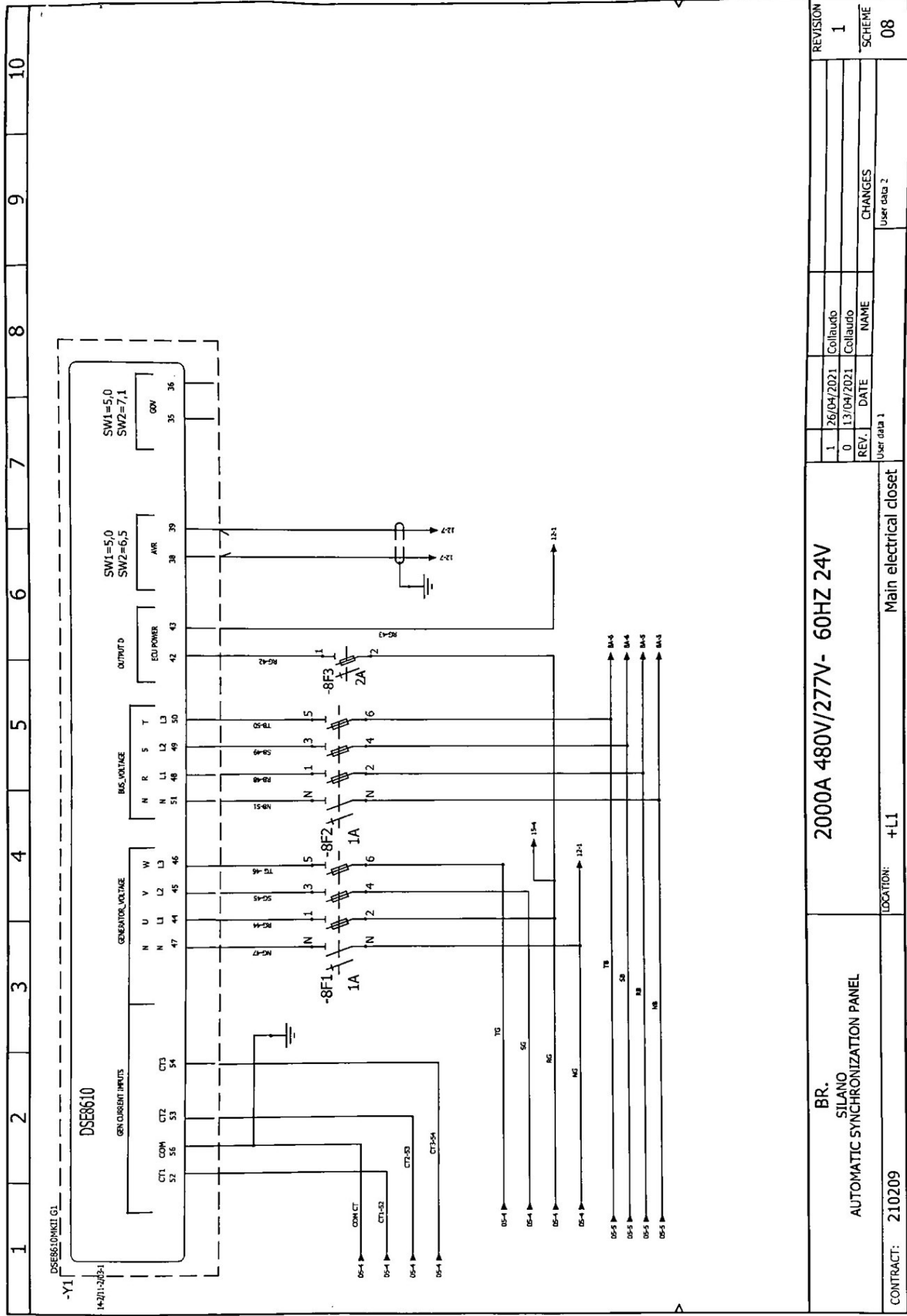
BR.  
SILANO  
AUTOMATIC SYNCHRONIZATION PANEL

2000A 480V/277V- 60HZ 24V  
LOCATION: +L1  
Main electrical closet

REV.	DATE	NAME	CHANGES	REVISION
1	26/04/2021	Collaudo		1
0	14/04/2021	Collaudo		
User data 1				
User data 2				
SCHEME				07

CONTRACT: 210209

Document released with version: 2014.01.5.3

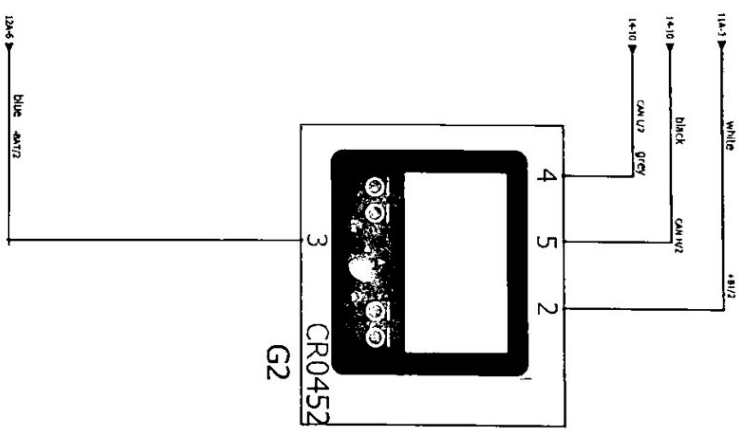
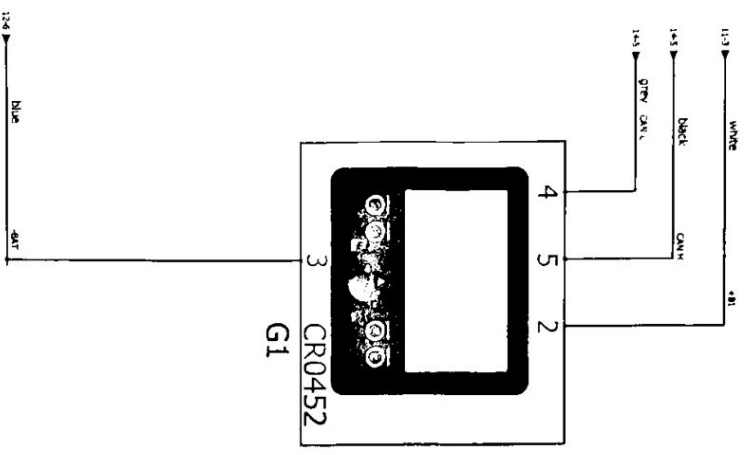


1	2	3	4	5	6	7	8	9	10
---	---	---	---	---	---	---	---	---	----

SOLDWORKS Electrical

DSE8610MKII G1		DSE8610		2000A 480V/277V- 60HZ 24V		REVISION	
-Y1		1A-2711-2021-1		BR. SILANO AUTOMATIC SYNCHRONIZATION PANEL		1	
						0	
						CHANGES	
						User data 2	
						08	
						User data 1	
						NAME	
						DATE	
						Collaudo	
						Collaudo	
						26/04/2021	
						13/04/2021	
						Collaudo	
						Collaudo	
						26/04/2021	
						13/04/2021	
						Collaudo	
						Collaudo	
						26/04/2021	
						13/04/2021	
						Collaudo	
						Collaudo	
						26/04/2021	
						13/04/2021	
						Collaudo	
						Collaudo	
						26/04/2021	
						13/04/2021	
						Collaudo	
						Collaudo	
						26/04/2021	
						13/04/2021	
						Collaudo	
						Collaudo	
						26/04/2021	
						13/04/2021	
						Collaudo	
						Collaudo	
						26/04/2021	
						13/04/2021	
						Collaudo	
						Collaudo	
						26/04/2021	
						13/04/2021	
						Collaudo	
						Collaudo	
						26/04/2021	
						13/04/2021	
						Collaudo	
						Collaudo	
						26/04/2021	
						13/04/2021	
						Collaudo	
						Collaudo	
						26/04/2021	
						13/04/2021	
						Collaudo	
						Collaudo	
						26/04/2021	
						13/04/2021	
						Collaudo	
						Collaudo	
						26/04/2021	
						13/04/2021	
						Collaudo	
						Collaudo	
						26/04/2021	
						13/04/2021	
						Collaudo	
						Collaudo	
						26/04/2021	
						13/04/2021	
						Collaudo	
						Collaudo	
						26/04/2021	
						13/04/2021	
						Collaudo	
						Collaudo	
						26/04/2021	
						13/04/2021	
						Collaudo	
						Collaudo	
						26/04/2021	
						13/04/2021	
						Collaudo	
						Collaudo	
						26/04/2021	
						13/04/2021	
						Collaudo	
						Collaudo	
						26/04/2021	
						13/04/2021	
						Collaudo	
						Collaudo	
						26/04/2021	
						13/04/2021	
						Collaudo	
						Collaudo	
						26/04/2021	
						13/04/2021	
						Collaudo	
						Collaudo	
						26/04/2021	
						13/04/2021	
						Collaudo	
						Collaudo	
						26/04/2021	
						13/04/2021	
						Collaudo	
						Collaudo	
						26/04/2021	
						13/04/2021	
						Collaudo	
						Collaudo	
						26/04/2021	
						13/04/2021	
						Collaudo	
						Collaudo	
						26/04/2021	
						13/04/2021	
						Collaudo	
						Collaudo	
						26/04/2021	
						13/04/2021	
						Collaudo	
						Collaudo	
						26/04/2021	
						13/04/2021	
						Collaudo	
						Collaudo	
						26/04/2021	
						13/04/2021	
						Collaudo	
						Collaudo	
						26/04/2021	
						13/04/2021	
						Collaudo	
						Collaudo	
						26/04/2021	
						13/04/2021	
						Collaudo	
						Collaudo	
						26/04/2021	
						13/04/2021	
						Collaudo	
						Collaudo	
						26/04/2021	
						13/04/2021	
						Collaudo	
						Collaudo	
						26/04/2021	
						13/04/2021	
						Collaudo	
						Collaudo	
						26/04/2021	
						13/04/2021	
						Collaudo	
						Collaudo	
						26/04/2021	
						13/04/2021	
						Collaudo	
						Collaudo	
						26/04/2021	
						13/04/2021	
						Collaudo	
						Collaudo	
						26/04/2021	
						13/04/2021	
						Collaudo	
						Collaudo	
						26/04/2021	
						13/04/2021	
						Collaudo	
						Collaudo	
						26/04/2021	
						13/04/2021	
						Collaudo	
						Collaudo	
						26/04/2021	
						13/04/2021	
						Collaudo	
						Collaudo	
						26/04/2021	
						13/04/2021	
						Collaudo	
						Collaudo	
						26/04/2021	
						13/04/2021	
						Collaudo	
						Collaudo	
						26/04/2021	
						13/04/2021	
						Collaudo	
						Collaudo	
						26/04/2021	
						13/04/2021	
						Collaudo	
						Collaudo	
						26/04/2021	
						13/04/2021	
						Collaudo	
						Collaudo	
						26/04/2021	
						13/04/2021	
						Collaudo	
						Collaudo	
						26/04/2021	
						13/04/2021	
						Collaudo	
						Collaudo	
						26/04/2021	
						13/04/2021	
						Collaudo	
						Collaudo	
						26/04/2021	
						13/04/2021	
						Collaudo	
						Collaudo	
						26/04/2021	
						13/04/2021	
						Collaudo	
						Collaudo	
						26/04/2021	
						13/04/2021	
						Collaudo	
						Collaudo	
						26/04/2021	
						13/04/2021	
						Collaudo	
						Collaudo	
						26/04/2021	
						13/04/2021	
						Collaudo	
						Collaudo	
						26/04/2021	
						13/04/2021	
						Collaudo	
						Collaudo	
						26/04/2021	
						13/04/2021	
						Collaudo	
						Collaudo	
						26/04/2021	
						13/04/2021	
						Collaudo	
						Collaudo	
						26/04/2021	
						13/04/2021	
						Collaudo	
						Collaudo	
						26/04/2021	
						13/04/2021	
						Collaudo	
						Collaudo	
						26/04/2021	
						13/	

1 2 3 4 5 6 7 8 9 10



BR.  
SILANO  
AUTOMATIC SYNCHRONIZATION PANEL.

2000A 480V/277V - 60HZ 24V  
+L1  
Main electrical closet

REV.	DATE	NAME	CHANGES	REVISION
1	26/04/2021	Collaudo		1
0	13/04/2021	Collaudo		

13

CONTRACT: 210209

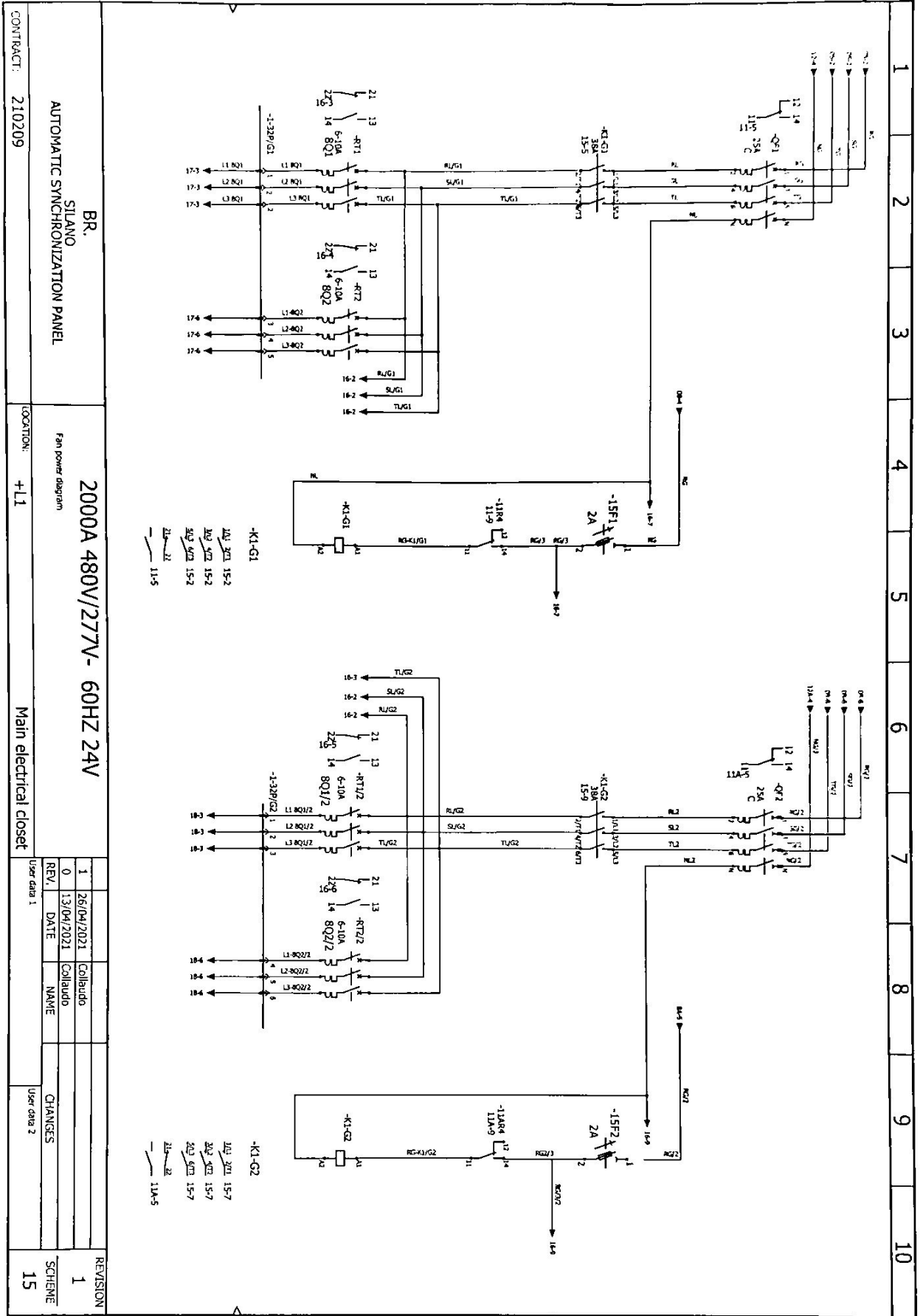
User data 1

User data 2

13







BR.  
SILANO  
AUTOMATIC SYNCHRONIZATION PANEL

2000A 480V/277V- 60HZ 24V  
Fan power diagram  
LOCATION: +L1  
Main electrical closet

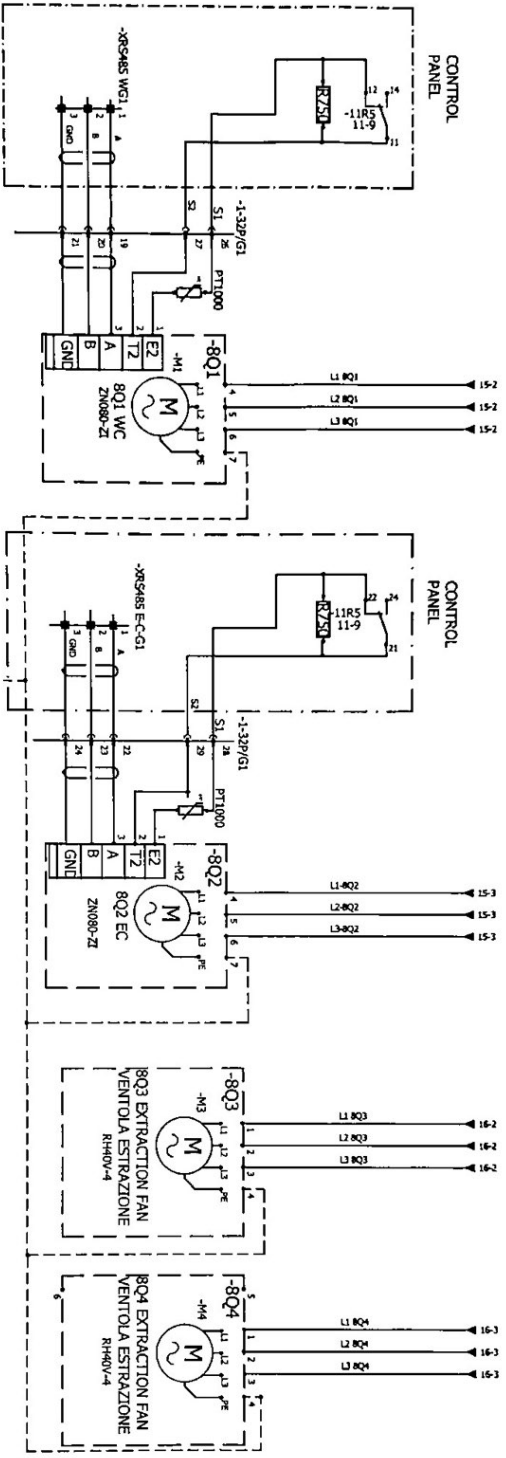
REV.	DATE	NAME	CHANGES	REVISION
1	26/04/2021	Collaudo		1
0	13/04/2021	Collaudo		
User data 1				
User data 2				
				SCHEME
				15

CONTRACT: 210209

2021/04/26 11:55



1 2 3 4 5 6 7 8 9 10

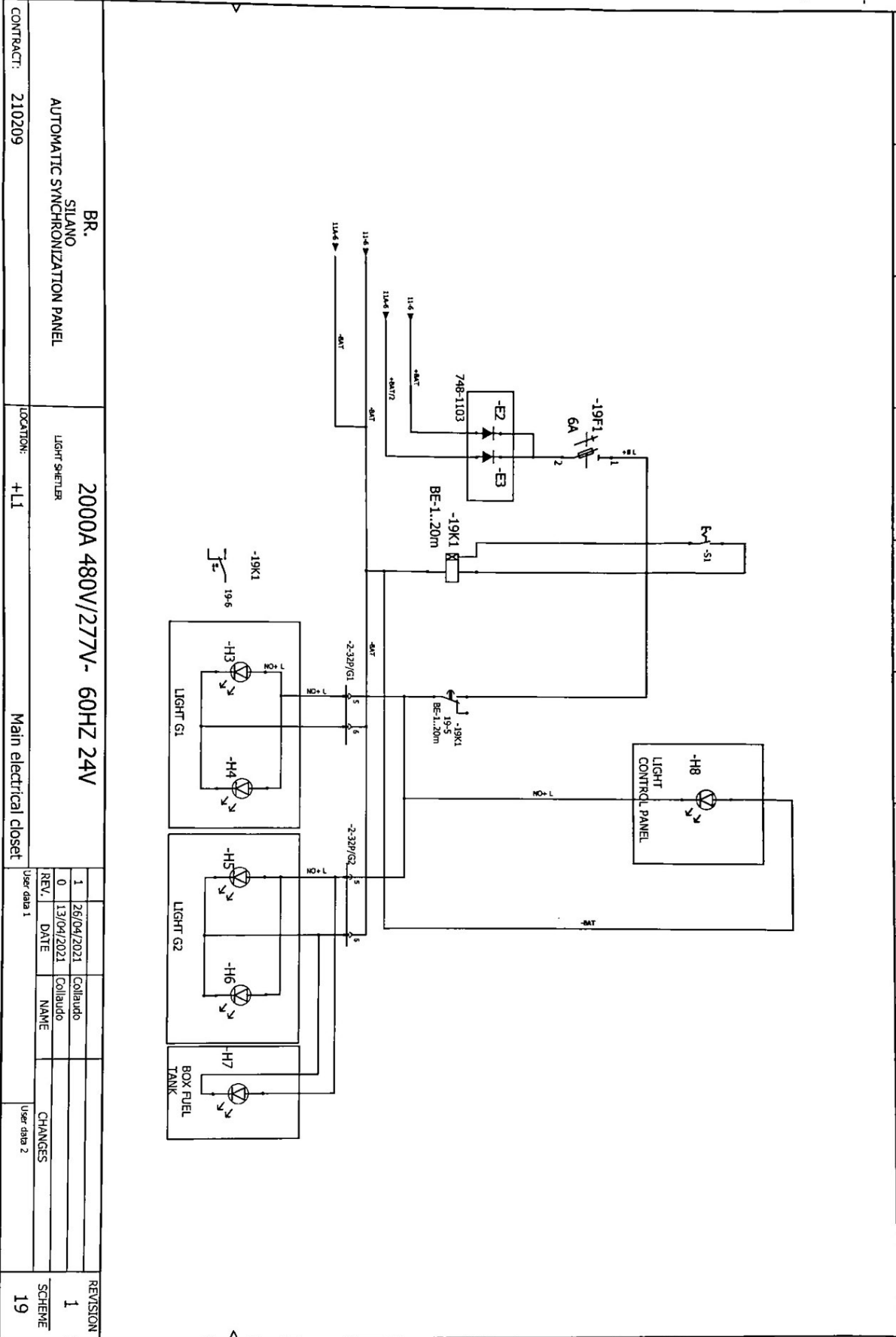


BR. SILANO AUTOMATIC SYNCHRONIZATION PANEL		2000A 480V/277V - 60HZ 24V		Fan G1		+L1		Main electrical closet		REVISION 1 13/04/2021 Colliardo CHANGES 17	
CONTRACT: 210209		LOCATION: +L1		User data 1		User data 2					

2021/04/21 10:50:00 AM Version: 20.2.18 0.5.5



1 2 3 4 5 6 7 8 9 10



BR.  
SILANO  
AUTOMATIC SYNCHRONIZATION PANEL

2000A 480V/277V - 60HZ 24V  
LIGHT SHELTER  
+LI

LOCATION: Main electrical closet

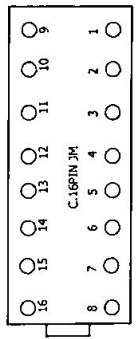
REV.	DATE	NAME	CHANGES	REVISION
1	26/04/2021	Collaudo		1
0	13/04/2021	Collaudo		

User data 1

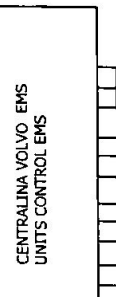
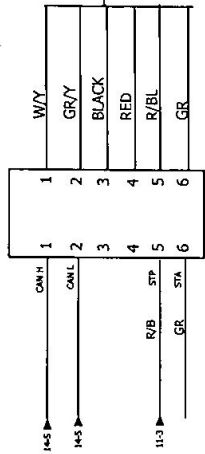
User data 2

SCHEME 19

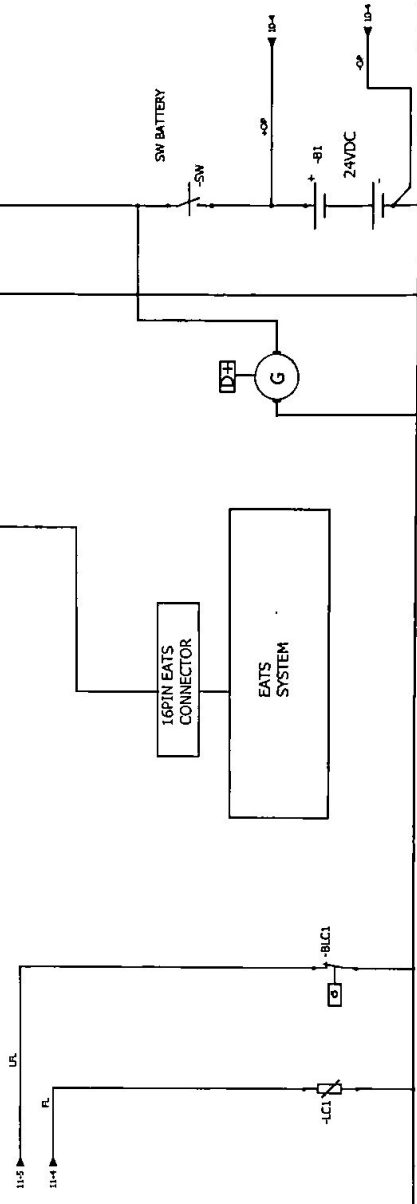
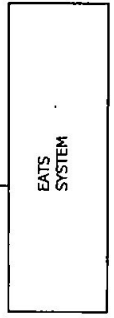
1 2 3 4 5 6 7 8 9 10



CONNECTOR 8P VOLVO



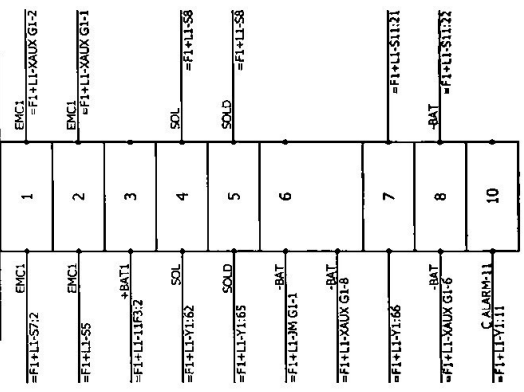
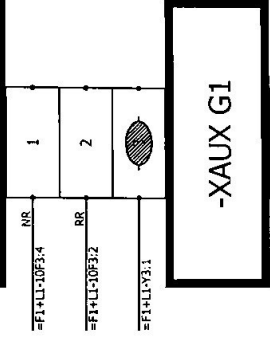
16PIN EATS CONNECTOR



BR. SILANO AUTOMATIC SYNCHRONIZATION PANEL		2000A 480V/277V- 60HZ 24V		REVISION 1	
AUTOMATIC SYNCHRONIZATION PANEL		2000A 480V/277V- 60HZ 24V		1 26/04/2021 Collaudo	
CONTRACT: 210209		Main electrical closet		0 14/04/2021 Collaudo	
LOCATION: +L1		User data 1		CHANGES	
		User data 2		SCHEME 20	

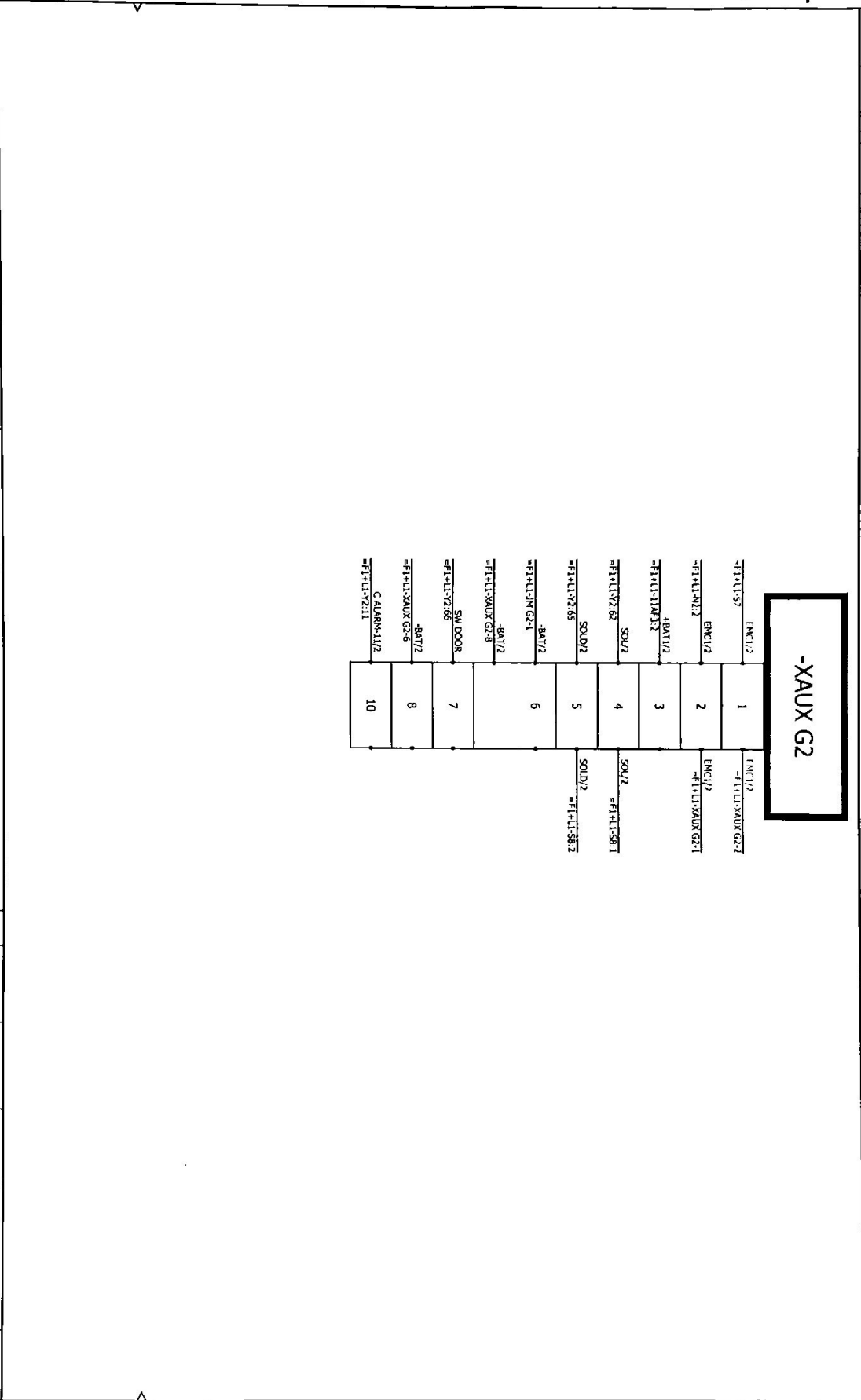






BR. SILANO AUTOMATIC SYNCHRONIZATION PANEL		2000A 480V/277V- 60HZ 24V		REVISION 1	
CONTRACT: 210209		LOCATION: +L1		1 26/04/2021 Collaudo	
				0 15/04/2021 Collaudo	
				REV. DATE NAME	
				CHANGES	
				User data 1	
				User data 2	
		Main electrical closet		SCHEME 22	

BR. SILANO AUTOMATIC SYNCHRONIZATION PANEL		2000A 480V/277V- 60HZ 24V		REVISION 1	
CONTRACT: 210209		LOCATION: +L1		Main electrical closet	
REV.	DATE	NAME	CHANGES	SCHEME	
1	26/04/2021	Collaudo		23	
0	15/04/2021	Collaudo			
User data 1			User data 2		



AB transmission-Ebbberg

Reference	Mark	Description	Quantity
ABE2400-1000	-T1, -T2, -T3, -T4, -T5, -T6	current transformer 1000/5A	6

CABUR

Reference	Mark	Description	Quantity
CSC 4	-XPR2-1, -XPS485 CAC G2-1, -X1-1, -XPR1-1, -XALX G1-1, -XALX G1-2, -XPR1-2, -X1-2, -XPS485 CAC G2-2, -XPR2-2, -XPS485 CAC G2-3, -X1-3, -XALX G1-3, -XALX G1-4, -XALX G2-4, -XALX G2-5, -XALX G1-5, -XALX G1-6, -XALX G2-6, -XALX G2-7, -XALX G1-7, -XALX G1-8, -XALX G2-8, -XALX G1-10, -XALX G2-10	Simple terminal	25

Fieder

Reference	Mark	Description	Quantity
97 P1	-11AR1, -11AR2, -11AR3, -11AR6, -11R1, -11R2, -11R3, -11R6	Socket Series 97, for Relay/46	8
97 P2	-11AR4, -11AR5, -11R4, -11R5	Socket Series 97, for Relay/46	4
46.61.9.024.0040	-11AR4, -11AR5, -11R4, -11R5	Miniature Industrial Relay Series 46, 24V DC, 2 NO/NC, 250V/8A	4
46.61.9.024.0040	-11AR1, -11AR2, -11AR3, -11AR6, -11R1, -11R2, -11R3, -11R6	Miniature Industrial Relay Series 46, 24V DC, 1 NO/NC, 250V/16A	8

IPM ELECTRONIC

Reference	Mark	Description	Quantity
CRO452	-N1, -N2		2

RS componenti

Reference	Mark	Description	Quantity
2519253	-S2, -S6		2

Schneider Electric

Reference	Mark	Description	Quantity
29450	-CB1, -CB2	Standard auxiliary contact, circuit breaker status OF-SDE-SDV, 1 single contact	2
33294	-CB1, -CB2	Circuit breaker Compact NS1000M - 1000 A - 4 poles - fixed - without trip unit	2
33504	-CB1, -CB2	Micrologic 2.0 trip unit - LL - for NS 630b..1600 / NS 1600b..3200	2
33668	-CB1, -CB2	24-30V AC/DC Undervoltage release (MV)	2
33688	-CB1, -CB2	Motor-mechanism - MCH - 220..240 V AC	2

BR. SILANO  
AUTOMATIC SYNCHRONIZATION PANEL

2000A 480V/277V- 60HZ 24V

LOCATION: +L1 Main electrical closet

CONTRACT: 210209

REV.	DATE	NAME	CHANGES
1	26/04/2021	Collaudo	
0	15/04/2021	Collaudo	

REVISION 1

SCHEME 24

User data 1

User data 2

-> Schneider Electric

Reference	Mark	Description	Quantity
A9N15636	-8AF3, -8F3, -10R2, -10F4, -11AF2, -11AF3, -11F2, -11F3, -15F1, -15F2, -15F1	1 pole STI fuse carrier	11
A9N15646	-10F1, -10F3, -11AF1, -11F1	2 pole STI	4
A9N15658	-8AF1, -8AF2, -8F1, -8F2	STI 10.3/38	4
A9N17529	-QF2	Miniature circuit breakers C-10g 3p+N C 25A 4500A	1
A9N17572	-10Q1, -10Q2	MINIATURE CIRCUIT BREAKER - C40N - 1 POLE + N - 10A - C CURVE-6000A	2
A9N26924	-QF2	Auxiliary contact OF ACT19	1
G02ME6TQ	-RT3, -RT3/2, -RT4, -RT4/2, -RT5/2	Motor circuit breaker, Tesys GV2, 3p, 1-1.6 A, thermal magnetic, screw clamp terminals	5
G02ME4	-RT1, -RT1/2, -RT2, -RT2/2	Thermal Magnetic Motor Circuit Breaker Tesys GV2ME - 3p - 6...10 A	4
G0ME1TQ	-RT1, -RT1/2, -RT2, -RT2/2, -RT3, -RT3/2, -RT4, -RT4/2, -RT5/2	Auxiliary contact Tesys - 1NO + 1NC	9
LC1D2SP7	-KF1, -KF2	Tesys D contactor - 3P(3 NO) - AC3 - <= 440 V	2
LC1D3801M7	-K1-G1, -K1-Q2	red 040 Emergency stop, switching off head 022 trigger and latching turn release	2
Z8A8394	-S7	Control and signalling units 0 22, Harmony® X85 plastic, Selector switch with standard handle, Head only, 3 position stay/ pull, Black handle	1
Z8A5A03	-S8	Control and signalling units 0 22, Harmony® X85 plastic, Selector switch with standard handle, Head only, 2 position stay/ pull, 2 position key withdrawal, Key number 455	2
Z8A5A04	-S5, -S10	single contact block for head 022 1NO silver alloy screw clamp terminal	4
Z8E101	-S5, -S8, -S10	single contact block for head 022 1NC silver alloy screw clamp terminal	2
Z8E102	-S7	single contact block for head 022 1NC silver alloy screw clamp terminal	2

Telemechanique

Reference	Mark	Description	Quantity
X0P2118G11	-S9, -S11	PLASTIC LIMIT SWITCH 1INCINO SA P311	2

BR.  
SILANO  
AUTOMATIC SYNCHRONIZATION PANEL

2000A 480V/277V- 60HZ 24V

CONTRACT: 210209      LOCATION: +L1      Main electrical closet

REV.	DATE	NAME	CHANGES
1	26/04/2021	Collaudo	
0	15/04/2021	Collaudo	

REVISION  
1  
SCHEME  
25