

Cultural Resources
AIR RESOURCES BOARD
Sustainable Portable Equipment Program



123917 | 1/31/20



PORTABLE EQUIPMENT REGISTRATION PROGRAM







CATERPILLAR INC.

IMPORTANT ENGINE INFORMATION

SER NO. 1HZ00318

ENGINE MODEL 3516 DISPLACEMENT 69.0 L

**VALVE LASH
0.50 mm INTAKE
1.00 mm EXHAUST**

ENGINE FAMILY YCPXL69.0ERK

MAX. ADV. POWER 2123 kW (2847)HP

MAX. RATED SPEED 1800 RPM

MAX. LOW IDLE SPEED 1450 RPM

**MAX. FUEL RATE @
602 mm³/STROKE**

MAX. kW ELECTRONIC

**MAX. INITIAL TIMING DEG. EM,DI,TC,ECM,CAC,
EXHAUST EMISSION CONTROL SYSTEM**

**CONFORMS TO 2000 U.S.
THIS ENGINE CONFORMS TO LARGE
EPA AND CALIFORNIA REGULATION ENGINES.
NON-ROAD COMPRESSION TO OPERATE AT
THIS ENGINE IS CERTIFIED TO OPERATE AT
CONSTANT SPEED ONLY ON COMMERCIALLY
AVAILABLE DIESEL FUEL.
DATE OF MANUFACTURE (MONTH) 11 159-2455**



2500/3125

2500/3125

2500/3125



CAUTION
EAR PROTECTION
MUST BE WORN
WHEN OPERATING
THIS EQUIPMENT.

DANGER



DIESEL FUEL
FUEL LEAKS
FUEL SPILLS

M9031





Ingersoll Rand

PLEASE DO NOT ENTER
NO STORAGE
BEHIND GATE









LOW OIL PRESSURE
HIGH WATER TEMP
OVERHEAT STOP
OVERHEAT
OVERHEAT

LOW OIL PRESSURE
HIGH WATER TEMP
OVERHEAT STOP
OVERHEAT
OVERHEAT

SPARK 1
SPARK 2
SPARK 3

LOW OIL PRESSURE
HIGH WATER TEMP
OVERHEAT STOP
OVERHEAT
OVERHEAT

CATERPILLAR

LOW OIL PRESSURE
HIGH WATER TEMP
OVERHEAT STOP
OVERHEAT
OVERHEAT

LOW OIL PRESSURE
HIGH WATER TEMP
OVERHEAT STOP
OVERHEAT
OVERHEAT



CAUTION
HOT SURFACE

SP4 25 A
OVER FAULT
RESET
TO CLEAR

CHECK OIL VALVE
RELIEF VALVE

DANGER
DO NOT OPERATE
USE OTHER ENGINE

STOP SWITCH
START SWITCH
STOP SWITCH
STOP SWITCH
STOP SWITCH
STOP SWITCH

STOP SWITCH
STOP SWITCH
STOP SWITCH
STOP SWITCH



SELECT SWITCH
STOP
START
STOP
STOP
STOP
STOP
STOP
STOP
STOP
STOP
STOP

WOODWARD

WOODWARD

WOODWARD

SEL-0000

SEL-0000

SEL-0000

SEL-0000

SEL-0000

SEL-0000

STOP
STOP
STOP
STOP
STOP
STOP
STOP
STOP

STOP SWITCH

STOP SWITCH

STOP SWITCH

STOP SWITCH

STOP SWITCH

STOP SWITCH

STOP SWITCH

STOP SWITCH

STOP SWITCH

STOP SWITCH



Panel with two analog meters:

- Left meter: Scale 0-1000, labeled "500 1000 1500 2000".
- Right meter: Scale 0-10, labeled "5 10 5".

Indicator lights panel:

- COILOVERN (Green)
- OVERCURRENT (Red)
- REVERSE POWER (Red)
- CIRCUIT LOW FUEL LEVEL (Red)
- LOSS OF EXHAUSTION (Red)
- FUEL TO PARALLEL (Red)
- NO. FUEL/OIL/OILY (Red)
- NO. FUEL LEVEL (Red)

CATERPILLAR control panel with display and buttons:

- Buttons: STOP, START, MODE, TEST, HOLD, REVERSE, FORWARD, PAUSE, EJECT, LOCK, UNLOCK, CLEAR, RESET, TEST, MODE, TEST, HOLD, REVERSE, FORWARD, PAUSE, EJECT, LOCK, UNLOCK, CLEAR, RESET.

CATERPILLAR control panel with buttons:

- Buttons: STOP, START, MODE, TEST, HOLD, REVERSE, FORWARD, PAUSE, EJECT, LOCK, UNLOCK, CLEAR, RESET.

Pressure gauge:

- Scale: 0-100 PSI
- Label: "PSI x 1.48 Conversion factor"

SAFETY
COVER PANEL
DO NOT REMOVE
OR REMOVE
TO CLEAR

RECHARGE panel with gauges and switches:

- Gauges: CHARGE, RECHARGE
- Switch: RECHARGE

ALARM CONTROL panel with gauges and switches:

- Gauges: ALARM CONTROL, TEST
- Switch: ALARM CONTROL

POWER CONTROL panel with gauges and switches:

- Gauges: OPEN, CLOSED
- Switch: POWER CONTROL

E2

DANGER
DO NOT OPERATE

Panel with multiple switches and a meter:

- Switches: BATTERY CHARGE, OVERVOLT, UNDERVOLT, RESET, TEST
- Meter: BATTERY CHARGE

Panel with indicator lights and switches:

- Indicator lights: CLOSED, OPEN, STOP, START, MODE, TEST, HOLD, REVERSE, FORWARD, PAUSE, EJECT, LOCK, UNLOCK, CLEAR, RESET.
- Switches: STOP, START, MODE, TEST, HOLD, REVERSE, FORWARD, PAUSE, EJECT, LOCK, UNLOCK, CLEAR, RESET.

Panel with indicator lights and switches:

- Indicator lights: STOP, START, MODE, TEST, HOLD, REVERSE, FORWARD, PAUSE, EJECT, LOCK, UNLOCK, CLEAR, RESET.
- Switches: STOP, START, MODE, TEST, HOLD, REVERSE, FORWARD, PAUSE, EJECT, LOCK, UNLOCK, CLEAR, RESET.

MILKON Programming Device:

- Label: MILKON Programming Device Only

CATERPILLAR®

GENERATOR SET

ENGINE MODEL .3500

YEAR 2000

2281 kVA 1825 kW 0.8 COS ϕ 60 HERTZ
X PRIME STANDBY CONTINUOUS

GENERATOR DATA

GENERATOR DATA DESCRIPTION
PRIME PLUS 10 PERCENT AVAILABLE

3 PHASE ~ 6 WIRE
X WYE X SERIES DELTA
GENERATOR 480 VOLTS 2743 AMPS PARALLEL
EXCITATION 23 VOLTS 5.9 AMPS
825 FRAME 1300 REV/MIN
MAXIMUM TEMPERATURE RISE 105 ° C BY RESISTANCE
40 ° C AMBIENT 1000 METERS ALTITUDE
CLASS H INSULATION
ENCLOSURE TYPE

INCLUDE SERIAL NUMBER AND GENERATOR PART NUMBER FROM GENERATOR SERIAL NUMBER PLATE WHEN ORDERING PARTS AND IN CORRESPONDENCE.
GEN IDN. 4890154
850 34417

118-0492-1

CATERPILLAR

29 11 CO

430

144-1951

4FN01594

GENERATOR SRAE

MODEL

34FM1000L*

SERIAL
NUMBER

CATERPILLAR

ARRANGEMENT

NUMBER

T44-1902

USA

MADE IN:

00

11

20



GENERATOR SET

ENGINE MODEL 3500

YEAR 2000

2281 kVA

1825 kW

0.8 COS ϕ

60 HERTZ

X PRIME

STANDBY

CONTINUOUS

GENERATOR DATA

GENERATOR DATA DESCRIPTION
PRIME PLUS 10 PERCENT AVAILABLE

3 PHASE \sim

6 WIRE

X WYE

DELTA

X SERIES

PARALLEL

480

VOLTS

2743 AMPS

23

VOLTS

5.9 AMPS

325

FRAME

1800 REV/MIN

MAXIMUM TEMPERATURE RISE 105 ° C BY RESISTANCE

40 ° C AMBIENT

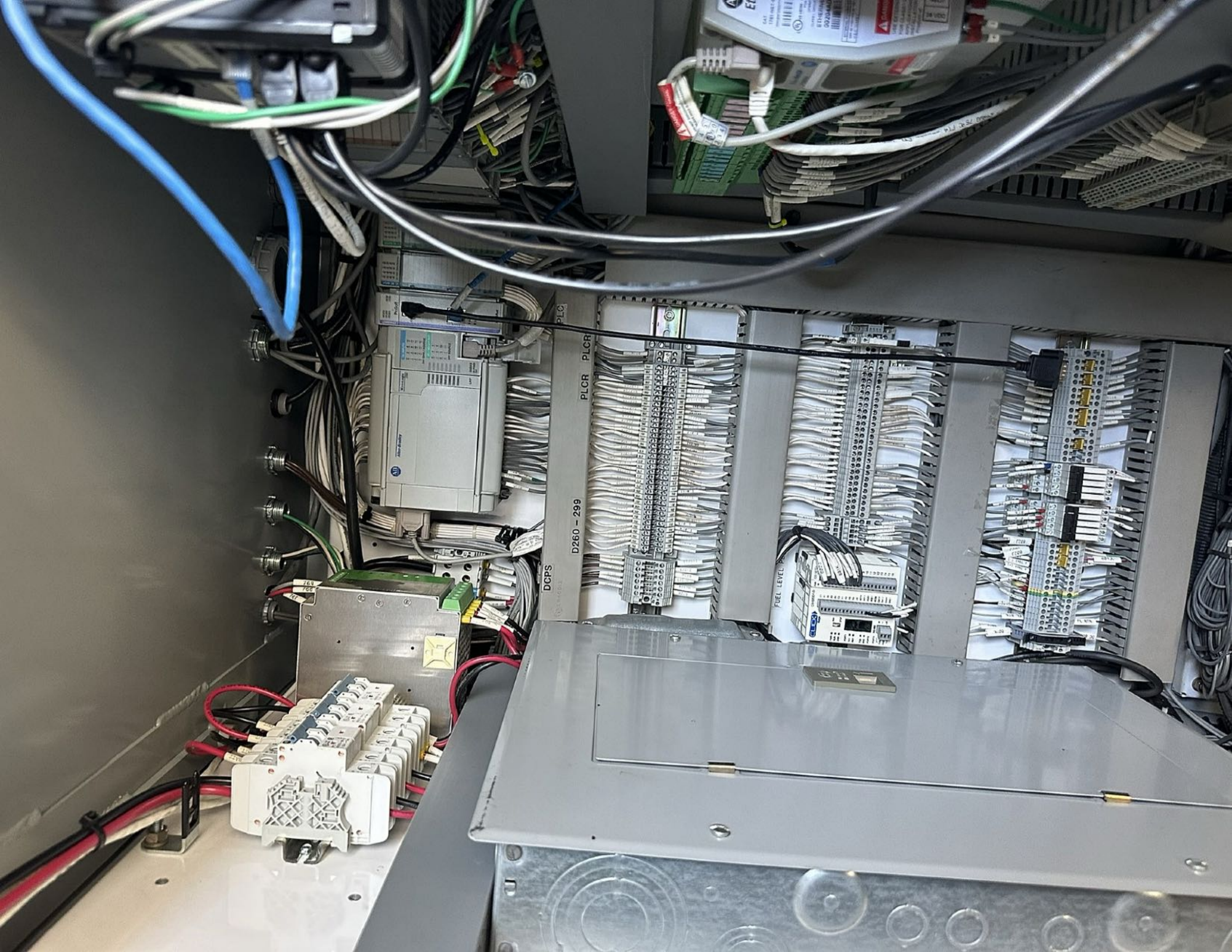
1000 METERS ALTITUDE

CLASS H INSULATION

ENCLOSURE TYPE

INCLUDE SERIAL NUMBER AND GENERATOR PART
NUMBER FROM GENERATOR SERIAL NUMBER PLATE
WHEN ORDERING PARTS AND IN CORRESPONDENCE.
GEN S/N: 4FN01594
ESO: JJH17

118-8452 1



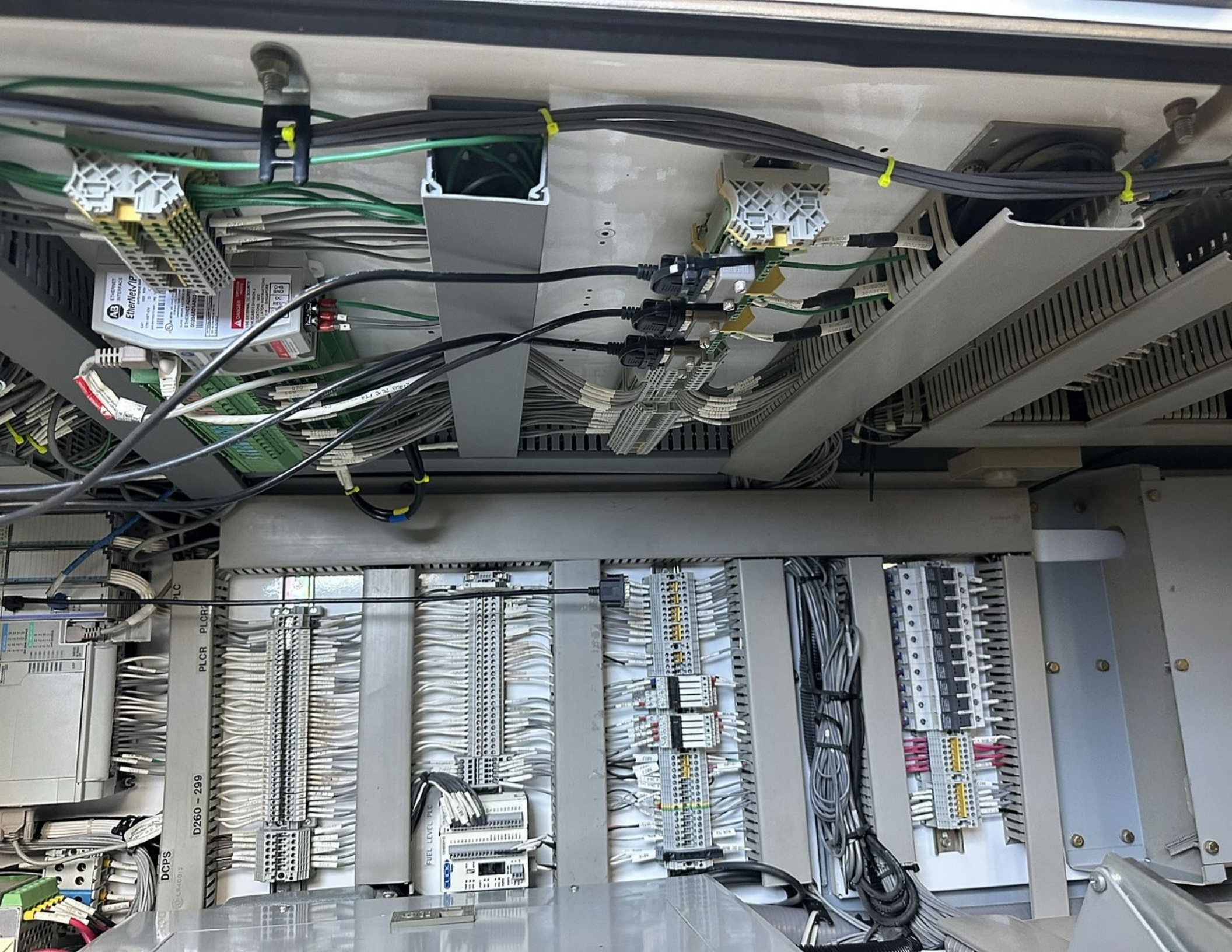
DCPS

D260 - 299

PLOR PLOR

FUEL LEVEL

FUEL LEVEL

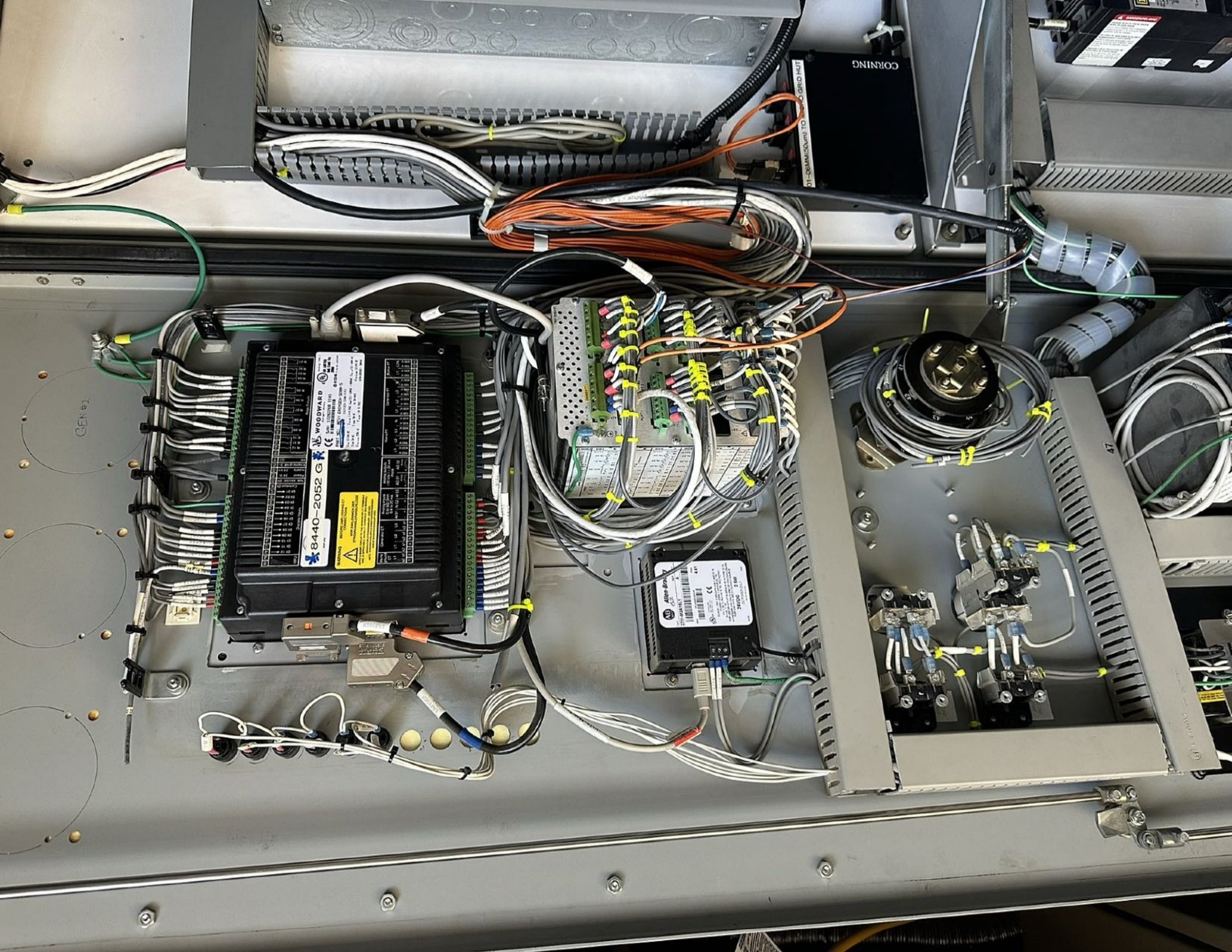


ETHERNET/IP
Cable Shield
Cable Braid
Cable Ground
Cable Shield
Cable Braid
Cable Ground

DCPS
PLCR
PLCR
D260 - 299

FUEL LEVEL PLC

Terminal block with multiple rows of connections, including a section with red and yellow wires.



GEN #1

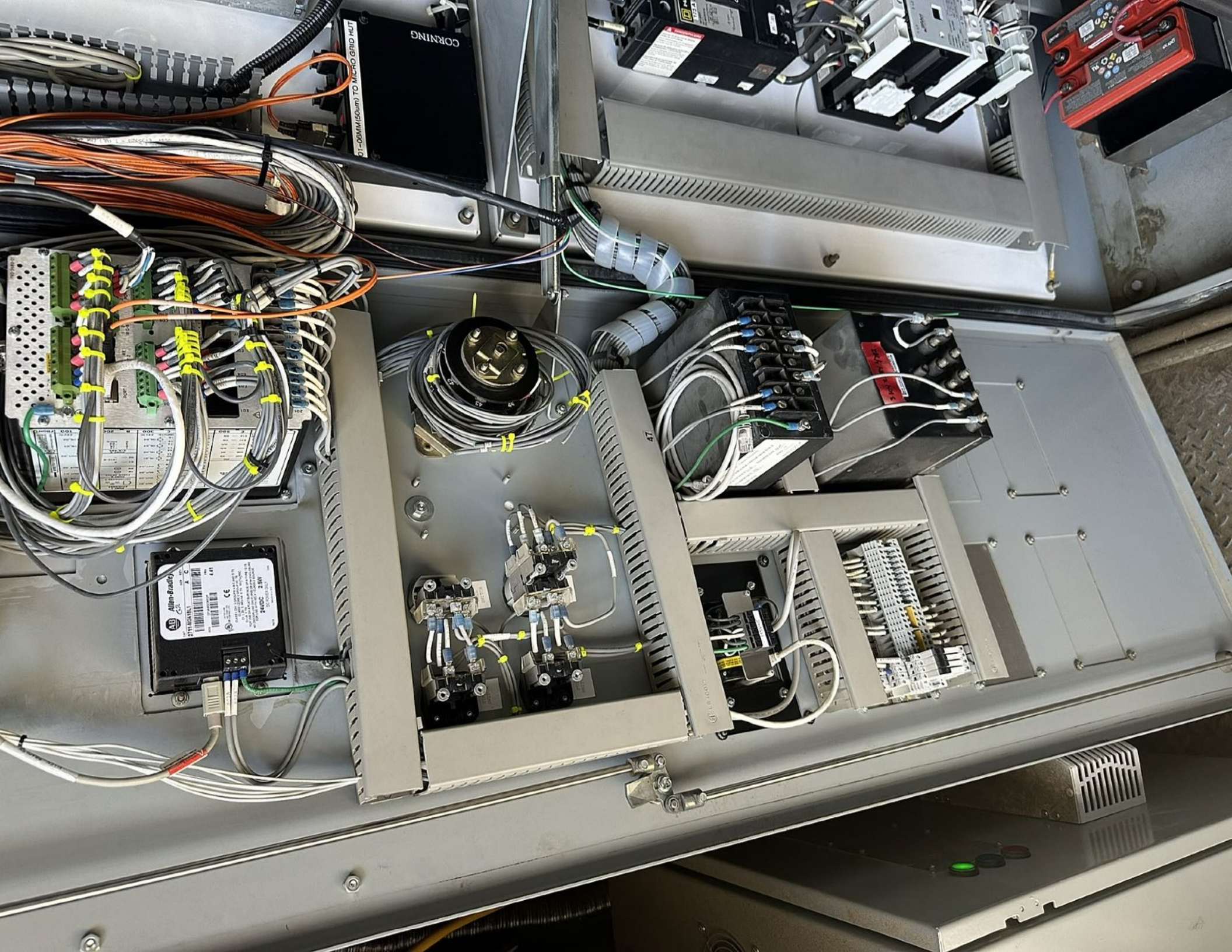
WOODWARD
8440-2052 G
GEN #1

Allen-Bradley
2500-SPB1000
PLC Module

CORNING

D1-D6MM/30UM TO 10MM/30 GRD HUT

47



UTILITY
47
UNDervOLTAGE
PHASE SEQUENCE

CIRCUIT SHIELD UNDERVOLTAGE/PHASE SEQUENCE RELAY

TRIP TEST
TA RESET

PICKUP VOLTAGE: 80 110 100 120
70 80 90
TIME DIAL: 1 3 5 2 4 0

ABB Power T&D Company Inc.
Allentown, Pa. U.S.A.

TYPE 47 CURVE INVERSE
CAT. 412N195 CONTROL 24/32 VDC
I.B. 7-437-2 MEASURE DC Hz

MENCOM Corporation
Gainesville, GA www.Mencom.com

Programming
Devices Only

UL TYPE 12
UL TYPE 4
UL TYPE 4X

UL US
MADE IN USA

PICKUP TIME DIAL INST. MULT. SELF TEST TIME TRIP INST. TRIP PICKUP

ABB Power T&D Company Inc.
Allentown, Pa. U.S.A.

CALIBRATED
MARTIN ELECTRIC CO. INC.
No. 1011
Date: 10/1/00





POWER

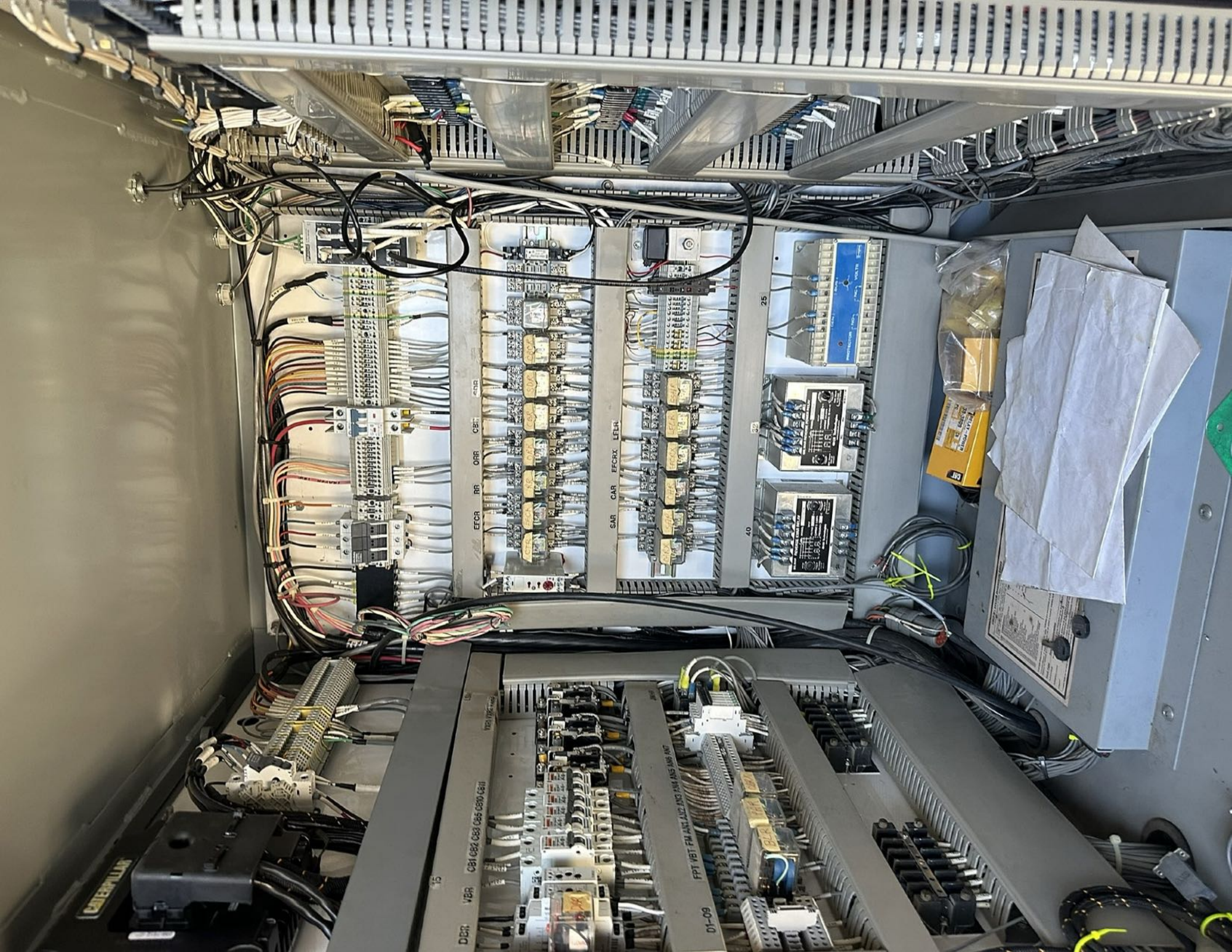
UREA

FAULT

E-POD

CleanAIR
SYSTEMS





PREMIUM

DPR VBR C81 C82 C83 C85 C870 C811

01-09 PPT VBT FM ANT A12 A13 A14 A15 A17

EFCR BR CBR CND

SAR CAR EFCRX LE1R

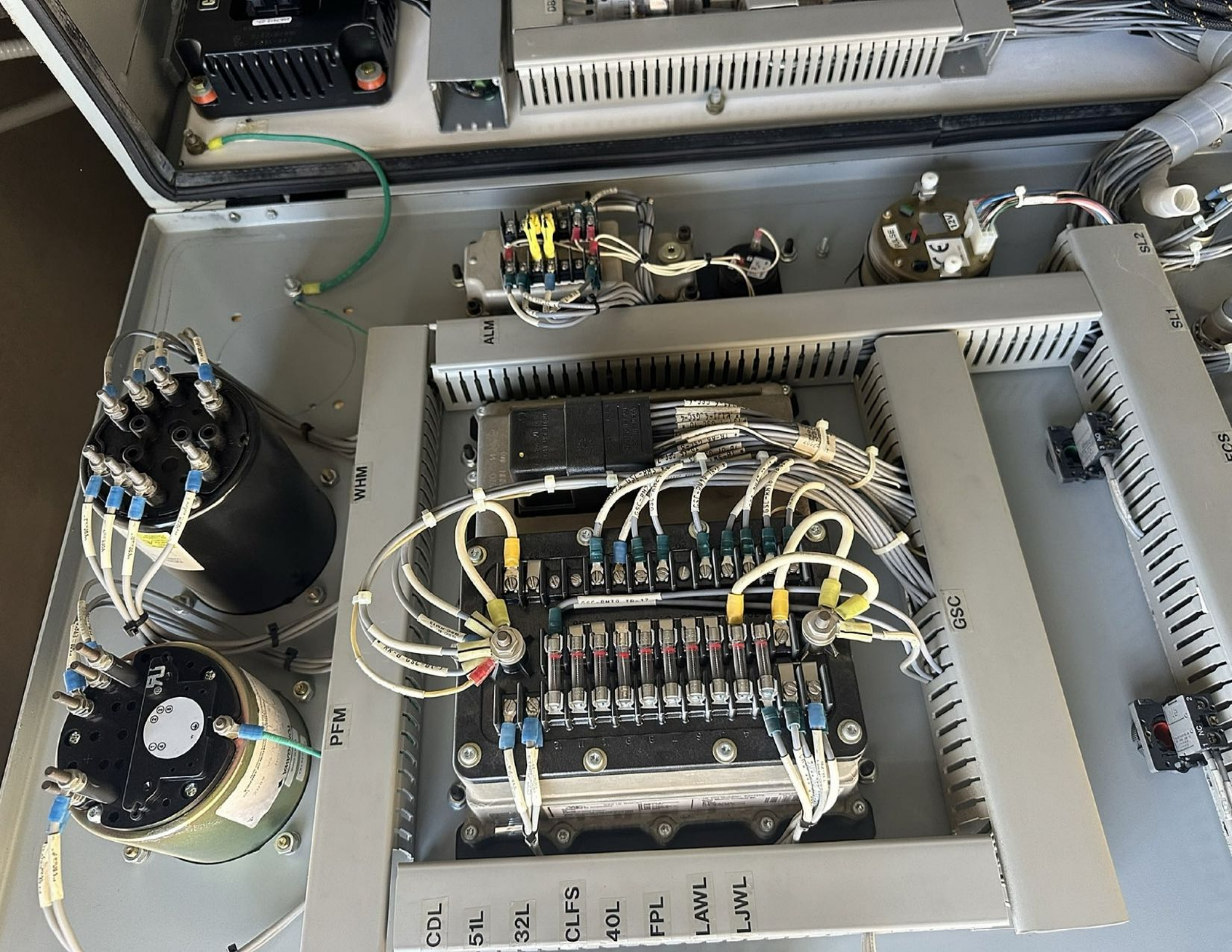
25

40

32

Control panel label with technical specifications and a power switch.

Yellow box label: EFCR LE1R



CDL

51L

32L

CLFS

40L

FPL

LAWL

LJWL

PFM

WHM

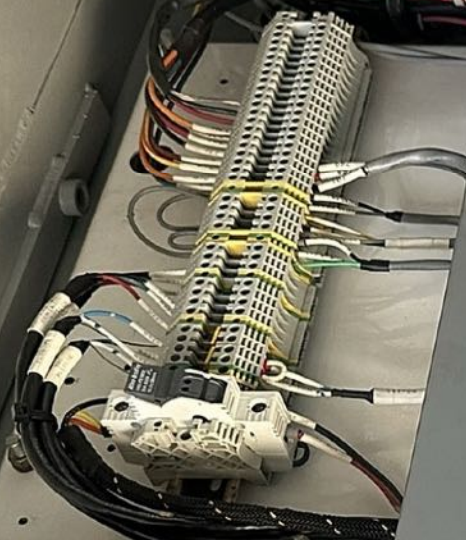
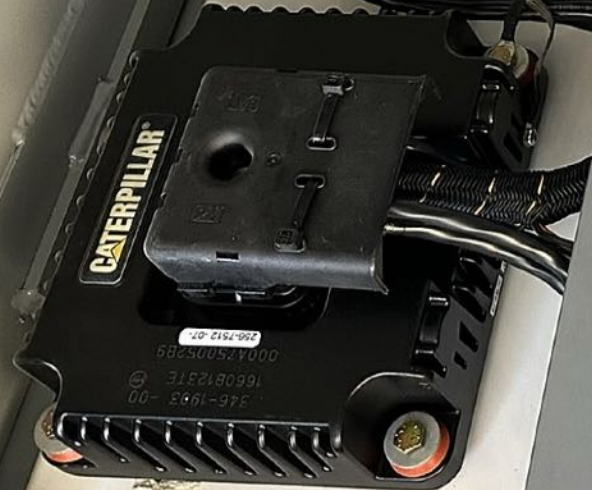
ALM

GSC

SL2

SL1

ECS



15

DBR VBR CB1 CB2 CB3 CB5 CB10 CB11

LSM
VXR1 VXR2 VXR3

JVHR

D1-09

FPT VBT FM AN1 AN2 AN3 AN4 AN5 AN6 AN7

BLR PAK CBRX

40

EFCR SAR

40

EFCR SAR

40



This Tank Requires Emergency Relief Venting.
Capacity Not Less Than 190,000 Cubic Feet Per Hour.
Tank Capacity - 1250 Gallons
Maximum Leakage Test Pressure - 5 psig
This Tank is Intended for Stationary Use Only.
Dike Capacity-111%

149-3137

CUSTOM TANK PART NUMBER	UCTD#	-1250
TANK CAPACITY (U.S. gal.)	1250	GAL.
CONTAINMENT PERCENTAGE	113	%
CUSTOM TANK SERIAL NO.	15958	

12-0013 (rev. A)

CATERPILLAR, INC.

147-5691-02

WARNING
DO NOT TRANSPORT
UNIT WITH MORE THAN
200 GAL. OF FUEL

108-4088

MADISON SWITCH PROBE

FUEL TANK
CAPACITY

1250
U.S. GAL.

7'6" TANK



TWO WAY FUEL CONTROL SYSTEM
PUMP | BYPASS
PUMP LOCKOUT

LOCKOUT (button)
 START (button)
 MANUAL (button)
 OFF/RESET (button)
 AUTO (knob)
 AUT (knob)
 FUEL LEVEL (LCD display)
 LOAD (knob)
 UNLOAD (knob)

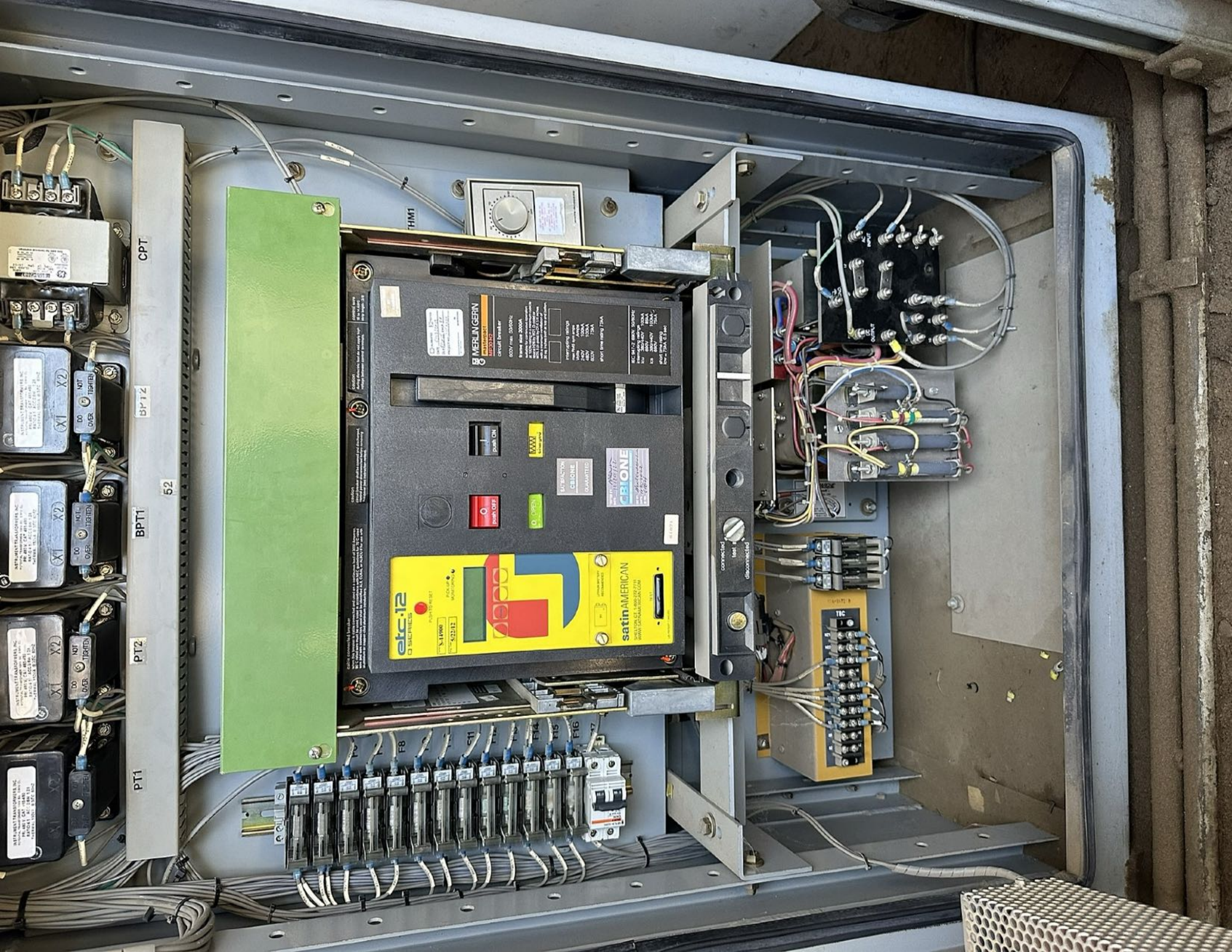
SKS Part No. 27

SKS INC
 Petroleum Products
 800-774-2039
 28890

DO NOT OPERATE
SEE OTHER SIDE

PT1
PT2
BPT1
BPT2
CPT
52





PT1 BPT1 52 BPT2 CPT

NT-MINI TRANSFORMER INC. PART NO. CPT-1000-1000 1000VA 100V/240V 50/60Hz
NT-MINI TRANSFORMER INC. PART NO. CPT-1000-1000 1000VA 100V/240V 50/60Hz
NT-MINI TRANSFORMER INC. PART NO. CPT-1000-1000 1000VA 100V/240V 50/60Hz
NT-MINI TRANSFORMER INC. PART NO. CPT-1000-1000 1000VA 100V/240V 50/60Hz

52

etc:12
SERIES
5.110W
521212
MANUFACTURED IN THE USA

SATIN AMERICAN
WWW.SATINAMERICAN.COM

EMERLIN GERB
52121212
circuit breaker
600V rms, 50/60Hz
break size 2000A
UL 489, Type I, 2 Pole
UL 489, Type I, 2 Pole
UL 489, Type I, 2 Pole
UL 489, Type I, 2 Pole

CEBIONE
SATISFACTION
CEBIONE
GUARANTEED

DO OPEN
DO OPEN
DO OPEN
DO OPEN

connected
disconnected

F8 F7 F6 F5 F4 F3 F2 F1

TIC

connected
disconnected

CPT

cable connected breaker
When this breaker is cable connected and used on a synchronous load of 3000 Amperes, wire must be used, sized in accordance with NEC, CUBAL or ALSCA for 75 °C rated aluminum or copper-clad aluminum conductors.

caution
circuit breaker shall be opened and discharged, central power disconnect handle removing, 1/2 cover (see instruction manual)

caution
during de-energizing test do not apply high voltage between control terminals.

control wires
#8 to #14 AWG
strip length: 3/8"

etc-12
Q SERIES

PUSH TO RESET

PICK-UP MONITORING

POWER

9V LITHIUM BATTERY RECOMMENDED

satinAMERICAN
SHELTON, CT 1-800-272-3711
WWW.SATINAMERICAN.COM

TEST

LIC. PATENT 7,340,051

Model: S-14900
Date: 5/22/12

REGISTRATION BY CIBIONE

GENERATED BY: TEST
DATE: 5/22/12 12:12 PM
SUE SIZEMORE
PROJECT NO. 23136252

MERLIN GERIN
masterpact
MP30 H2
circuit breaker

600V max. 50/60Hz

frame size 3000A

suitable for continuous operation at 100% rating in a minimum cube space 158 by 121 (3-pole) or with a (4-pole) by 147.8 inches 30 sq. inches both at top and bottom.

interrupting ratings

max RMS sym amps
Vcb 100kA
240V 100kA
480V 100kA
600V 75kA

short time rating 75kA

IEC 947-2 690V 50/60Hz

interruping ratings

Icu 380/440V 100kA
Ics 690V 85kA
Ics 380/440V 100kA
Ics 690V 75kA
short time rating
Icu = 100kA 0.3 sec

push ON

charged

push OFF

OPEN

SATISFACTION
CBIONE
GUARANTEED

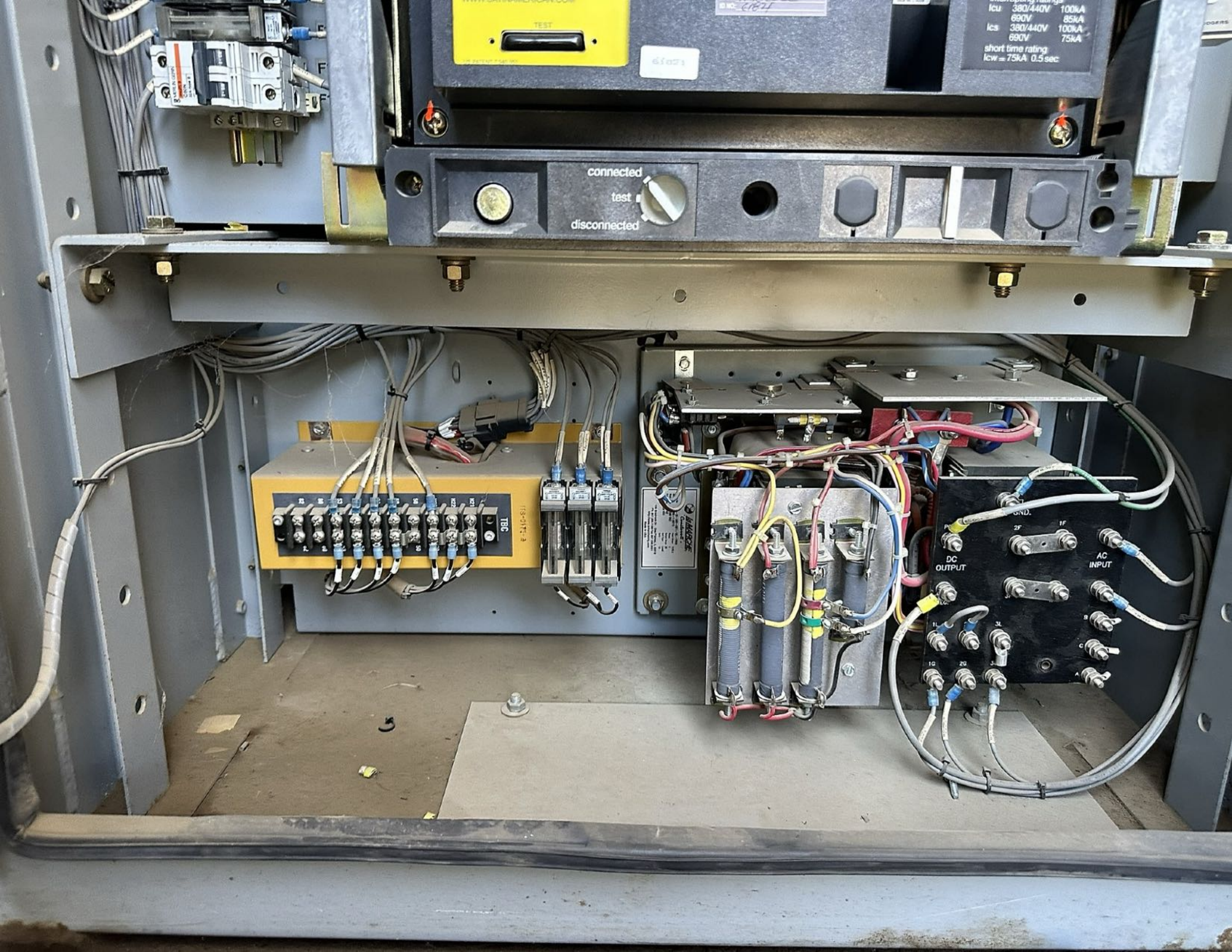
TESTED BY: *Alexander*
DATE: 11/29/12
CBIONE
CONCRETE BREAKERS INSULATION PRODUCTS

Q.P.T. *Alexander*
DATE: 5/22/12
ID NO: *6187*

6187

connected
test
disconnected

TBC



cable connected breaker
when this breaker is cable connected and used on a continuous load of 3000 Amperes,
caution
circuit breaker shall be opened and discharged

caution
during disconnection, first de-energize load

caution
during disconnection, first de-energize load

control wire
18 to 22 AWG

RECONDITIONED BY
CBIONE

etc-12
Q SERIES


PUSH TO RESET

Serial: **S-14900**
Mfg. Date: **5/22/12**

PICK-UP MONITORING 

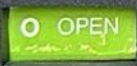







push OFF


push ON


OPEN


charged

SATISFACTION
CBIONE
CIRCUIT BREAKER SOLUTIONS SPECIALIST
GUARANTEED

TESTED BY: *ARON*
DATE: *11/29/12*
CBIONE
CIRCUIT BREAKER SOLUTIONS SPECIALIST
QC BY: *ALCOUSENBOM*
DATE: *11/30/2012*
ID NO: *61821*

CALIBRATED TESTED
DATE: *5/22/12*
DUE: *5/21/15* ENGR: *SP*
PROJECT NO: *1515XXXX*
EMERSON

MERLIN GERIN
masterpact
MP30 H2
circuit breaker
600V max 50/60Hz
frame size 3000A
suitable for continuous operation at 100% rating in a minimum cubic space H26 by W21 (3-pole) or W25.5 (4-pole) by D14. 1/4 inches with a minimum ventilation of 30 sq. inches both at top and bottom.
interrupting ratings
max RMS sym amps
Volts Amps
240V 100kA
480V 100kA
600V 75kA
short time rating 75kA
IEC 947-2 690V 50/60Hz
interrupting ratings
Icu 380/440V 100kA
690V 85kA
Ics 380/440V 100kA
690V 75kA
short time rating
Icw = 75kA 0.5 sec

satinAMERICAN

SHELTON, CT. 1-800-272-7711
WWW.SATINAMERICAN.COM

LITHIUM BATTERY RECOMMENDED

TEST

US PATENT 7,949,051

61821

CATERPILLAR
SERVICE TOOL

TEMPERATURE
RECORDER

SQUARE TURNS BLACK WHEN EXPOSED
TO INDICATED TEMPERATURE

°C	60	66	71	77	82	88
°F	140	150	160	170	180	190

872829

CATERPILLAR®



0000

ES9E



R/min



AC
METER

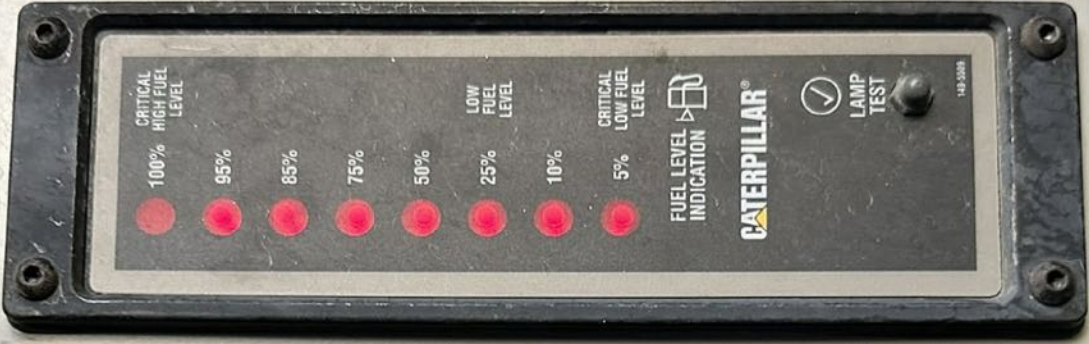
ENGINE
METER

LAMP
TEST

ALARM
CODES

EXIT

SERVICE
MODE



TWO WAY FUEL CONTROL SYSTEM

PUMP | BYPASS

PUMP LOCKOUT

LOCKOUT

START

MANUAL

OFF/RESET

AUTO

AUT

LOAD

UNLOAD

FUEL LEVEL



12-3884

117 50 100

95.34

 WOODWARD

 EASY GEN 3000

Δ/λ	Mains	WT1 11.7kV P -430kW f 60.0Hz	Parameter
AUTO Mode	Generator	WT2 00.0V P 0.00MW f 00.0Hz PF ---	Next Page
MAN Mode		0.00kA L ₁ 0.00kA L ₂ 0.00kA L ₃	
			



SEL

SCHWEITZER
ENGINEERING
LABORATORIES

SEL-700G

GENERATOR PROTECTION RELAY

VAB = 0.0
VAB = 148.57 AME

TARGET
RESET

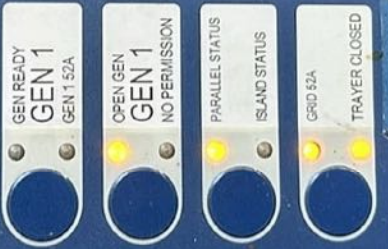
ESC



ENT

ENABLED
TRIP
NORMAL
IN SYNC
BLACKSTART STA
PARALLEL PERM
ISLAND PERM
BLACKSTART PERM

GEN READY
GEN 1
GEN 1 52A
OPEN GEN
GEN 1
NO PERMISSION
PARALLEL STATUS
ISLAND STATUS
GRID 52A
TRAYER CLOSED



Allen-Bradley PanelView 300 Micro

AB

CALIBRATION
OSALD HARTMAN 11/15/2022
HAWTHORNE POWER SYSTEMS
(858) 276-8888
11/16/2023 EPD SENSORS 01
DUE INSET ID

EXHURST
EPD INLET 79 F
OHT OUTLET 84
ENGINE BP 0.5

F1 F2 F3 F4

Navigation arrows



TURN ENGINE CONTROL SWITCH TO
OFF/RESET PRIOR TO RESETTING



LOCAL REMOTE



TURN ENGINE CONTROL SWITCH TO OFF/RESET PRIOR TO RESETTING

LOCK-OUT RELAY

VAR/POWER FACTOR CONTROL

LAG LEAD

LOAD CONTROL

BASE IMPORT

LOCAL REMOTE

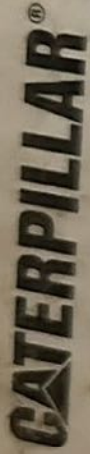
STOP

START



UTILITY
UNDERVOLTAGE
PHASE SEQUENCE





GENERATOR SET

ENGINE MODEL 3500
YEAR 2000

2281 kVA
X PRIME 1825 kW 0.8 COS ϕ 60 HERTZ
STANDBY CONTINUOUS

GENERATOR DATA

GENERATOR DATA DESCRIPTION
PRIME PLUS 10 PERCENT AVAILABLE

3 PHASE \sim

6 WIRE

X WYE

GENERATOR
EXCITATION

X SERIES

480 VOLTS

23 VOLTS

825 FRAME

DELTA

PARALLEL

2743 AMPS

5.9 AMPS

MAXIMUM TEMPERATURE RISE 1800 REV/MIN
40 ° C AMBIENT

105 ° C BY RESISTANCE

ENCLOSURE TYPE CLASS H INSULATION 1000 METERS ALTITUDE

INCLUDE SERIAL NUMBER AND GENERATOR PART
NUMBER FROM GENERATOR SERIAL NUMBER PLATE
WHEN ORDERING PARTS AND IN CORRESPONDENCE.
GEN S/N: 4FN01592
ESO: JJH15

113-8452 1

CATERPILLAR®

GENERATOR SET

MODEL NO. 3516

1000 KW

2381 VOLTS 1625 KW 60 CYCLES 60 HERTZ

X FRAME STANDARD CONTINUOUS

GENERATOR DATA

GENERATOR DATA DESCRIPTION
FRAME PLUS 10 PERCENT AVAILABLE

3 PHASE 4 WIRE

X WYE

DELTA

X SERIES

PARALLEL

GENERATOR

480 VOLTS

2743 AMPS

EXCITATION

23 VOLTS

59 AMPS

825 FRAME

1800 RPM/MIN.

MAXIMUM TEMPERATURE RISE 105 ° C BY RESISTANCE

40 ° CAISENT

1000 METERS ALTITUDE

ENCLOSURE TYPE CLASS N INSULATION

INCLUDE SERIAL NUMBER AND GENERATOR PART
NUMBER FROM GENERATOR SERIAL NUMBER PLATE
AND CORRESPONDING PARTS AND N CORRESPONDENCE
SERIAL NUMBER

1000 KW



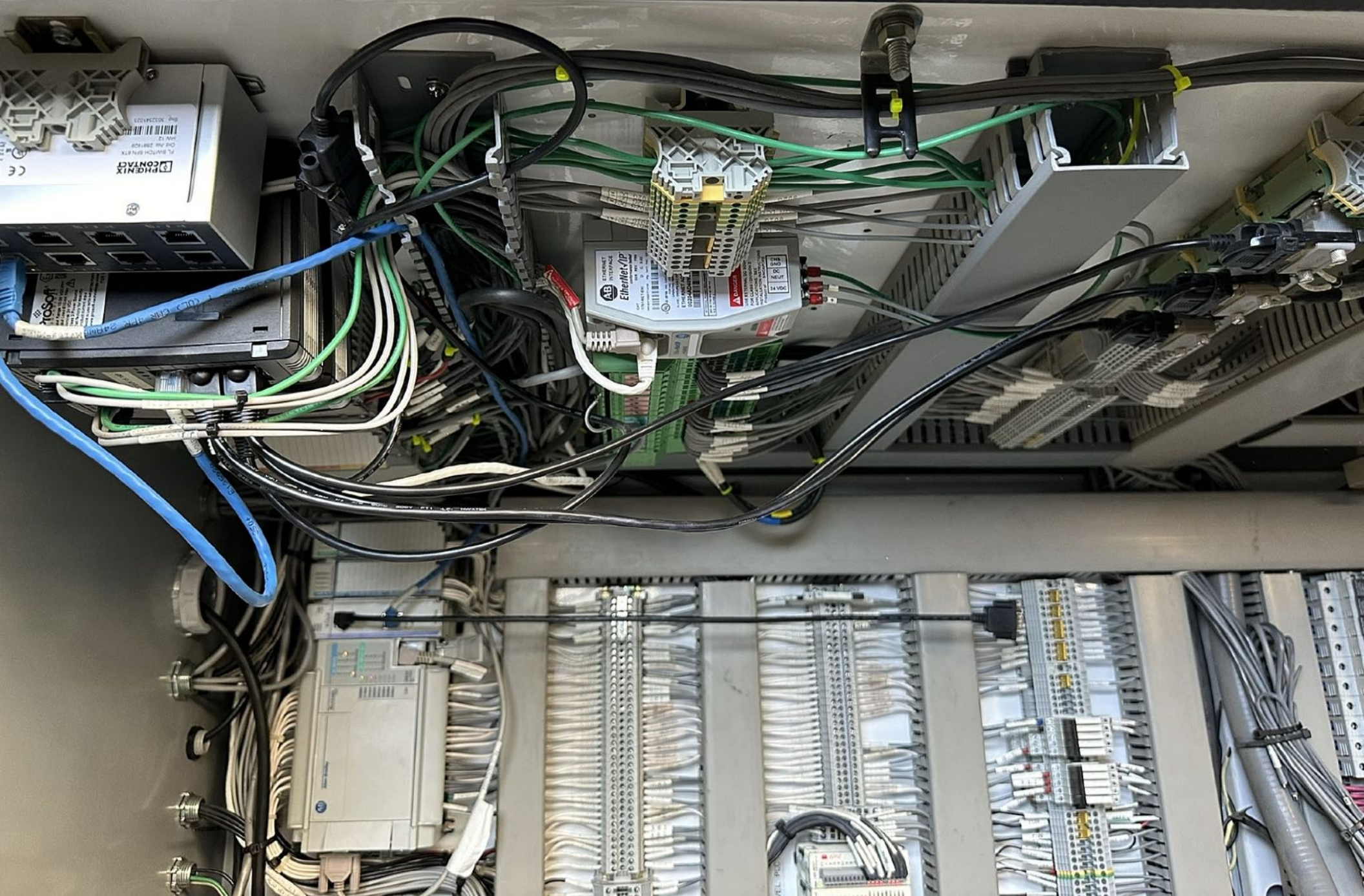
CATERPILLAR INC.

IMPORTANT ENGINE INFORMATION

SER. NO. 14ZD01413
ENGINE MODEL 3516 DISPLACEMENT 88.0 L
VALVE LASH 0.50 mm INTAKE
1.00 mm EXHAUST

ENGINE FAMILY YCPXLB8 DEK
MAX. ADV. POWER 2123 kW (2847 HP)
MAX. RATED SPEED 1300 RPM
MAX. LOW IDLE SPEED 1450 RPM
MAX. FUEL RATE @

MAX. kW
MAX. INTAKE TIMING DEG. 562 mm³ / STROKE
EXHAUST EMISSION DEQ. ELECTRONIC
CONTROL SYSTEM EMILITEC/EM/CLAC
EPA AND CALIF. CONFORMS TO 2008 U.S.
THIS ENGINE IS CERTIFIED TO OPERATE AT
CONSTANT SPEEDS TO 1500 RPM
AVAILABLE SERIALS ONLY ON COMMERCIAL
DATE OF MANUFACTURE (MONTH/YEAR) 100-0488

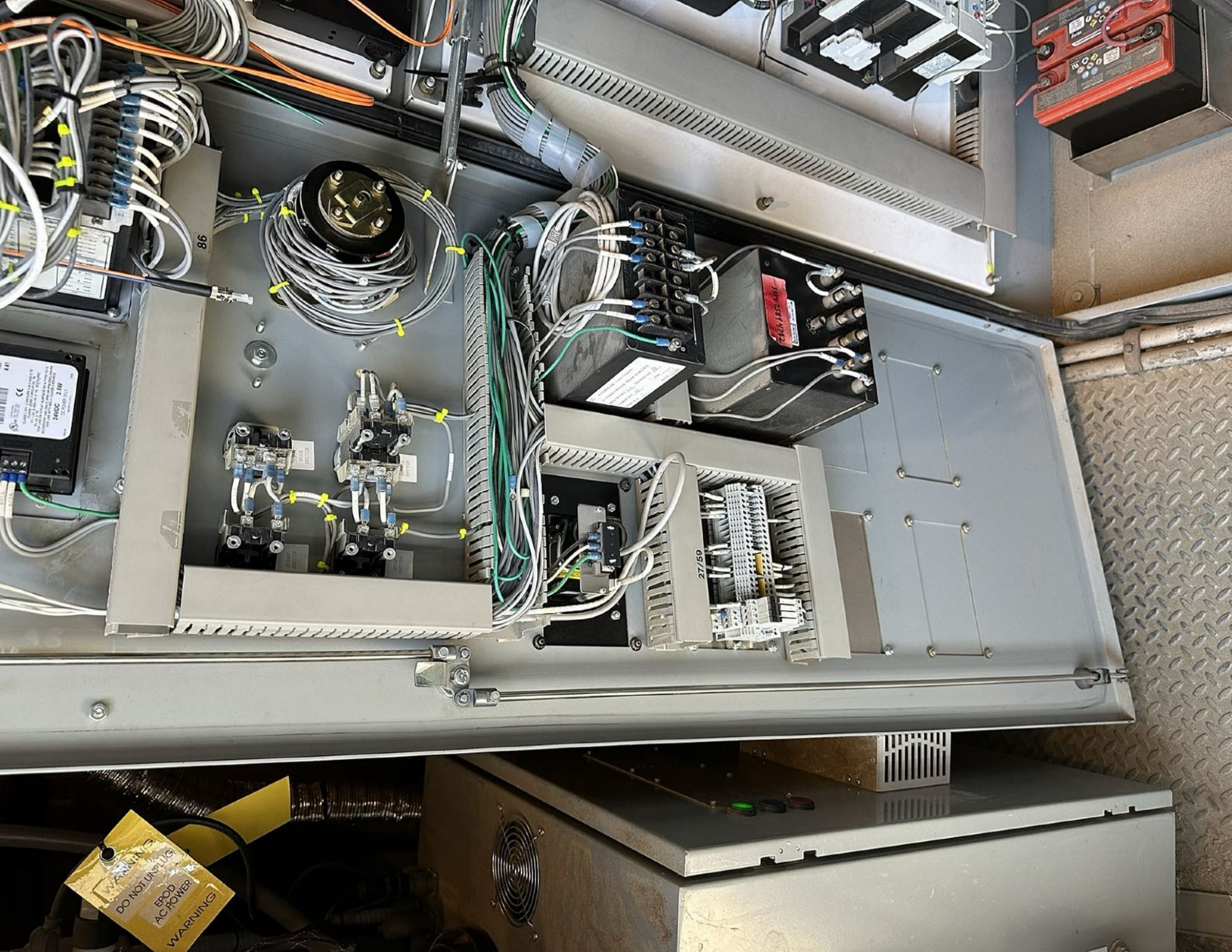


ETHERNET
INTERFAC
Ethernet/IP
10/100/1000
1000BASE-T
1000BASE-SX
1000BASE-LX
1000BASE-PLX
1000BASE-RX
1000BASE-ZX
1000BASE-EX
1000BASE-EX2
1000BASE-EX3
1000BASE-EX4
1000BASE-EX5
1000BASE-EX6
1000BASE-EX7
1000BASE-EX8
1000BASE-EX9
1000BASE-EX10
1000BASE-EX11
1000BASE-EX12
1000BASE-EX13
1000BASE-EX14
1000BASE-EX15
1000BASE-EX16
1000BASE-EX17
1000BASE-EX18
1000BASE-EX19
1000BASE-EX20
1000BASE-EX21
1000BASE-EX22
1000BASE-EX23
1000BASE-EX24
1000BASE-EX25
1000BASE-EX26
1000BASE-EX27
1000BASE-EX28
1000BASE-EX29
1000BASE-EX30
1000BASE-EX31
1000BASE-EX32
1000BASE-EX33
1000BASE-EX34
1000BASE-EX35
1000BASE-EX36
1000BASE-EX37
1000BASE-EX38
1000BASE-EX39
1000BASE-EX40
1000BASE-EX41
1000BASE-EX42
1000BASE-EX43
1000BASE-EX44
1000BASE-EX45
1000BASE-EX46
1000BASE-EX47
1000BASE-EX48
1000BASE-EX49
1000BASE-EX50
1000BASE-EX51
1000BASE-EX52
1000BASE-EX53
1000BASE-EX54
1000BASE-EX55
1000BASE-EX56
1000BASE-EX57
1000BASE-EX58
1000BASE-EX59
1000BASE-EX60
1000BASE-EX61
1000BASE-EX62
1000BASE-EX63
1000BASE-EX64
1000BASE-EX65
1000BASE-EX66
1000BASE-EX67
1000BASE-EX68
1000BASE-EX69
1000BASE-EX70
1000BASE-EX71
1000BASE-EX72
1000BASE-EX73
1000BASE-EX74
1000BASE-EX75
1000BASE-EX76
1000BASE-EX77
1000BASE-EX78
1000BASE-EX79
1000BASE-EX80
1000BASE-EX81
1000BASE-EX82
1000BASE-EX83
1000BASE-EX84
1000BASE-EX85
1000BASE-EX86
1000BASE-EX87
1000BASE-EX88
1000BASE-EX89
1000BASE-EX90
1000BASE-EX91
1000BASE-EX92
1000BASE-EX93
1000BASE-EX94
1000BASE-EX95
1000BASE-EX96
1000BASE-EX97
1000BASE-EX98
1000BASE-EX99
1000BASE-EX100

Panduit

Prosoft

ETHERNET
INTERFAC
Ethernet/IP
10/100/1000
1000BASE-T
1000BASE-SX
1000BASE-LX
1000BASE-PLX
1000BASE-RX
1000BASE-ZX
1000BASE-EX
1000BASE-EX2
1000BASE-EX3
1000BASE-EX4
1000BASE-EX5
1000BASE-EX6
1000BASE-EX7
1000BASE-EX8
1000BASE-EX9
1000BASE-EX10
1000BASE-EX11
1000BASE-EX12
1000BASE-EX13
1000BASE-EX14
1000BASE-EX15
1000BASE-EX16
1000BASE-EX17
1000BASE-EX18
1000BASE-EX19
1000BASE-EX20
1000BASE-EX21
1000BASE-EX22
1000BASE-EX23
1000BASE-EX24
1000BASE-EX25
1000BASE-EX26
1000BASE-EX27
1000BASE-EX28
1000BASE-EX29
1000BASE-EX30
1000BASE-EX31
1000BASE-EX32
1000BASE-EX33
1000BASE-EX34
1000BASE-EX35
1000BASE-EX36
1000BASE-EX37
1000BASE-EX38
1000BASE-EX39
1000BASE-EX40
1000BASE-EX41
1000BASE-EX42
1000BASE-EX43
1000BASE-EX44
1000BASE-EX45
1000BASE-EX46
1000BASE-EX47
1000BASE-EX48
1000BASE-EX49
1000BASE-EX50
1000BASE-EX51
1000BASE-EX52
1000BASE-EX53
1000BASE-EX54
1000BASE-EX55
1000BASE-EX56
1000BASE-EX57
1000BASE-EX58
1000BASE-EX59
1000BASE-EX60
1000BASE-EX61
1000BASE-EX62
1000BASE-EX63
1000BASE-EX64
1000BASE-EX65
1000BASE-EX66
1000BASE-EX67
1000BASE-EX68
1000BASE-EX69
1000BASE-EX70
1000BASE-EX71
1000BASE-EX72
1000BASE-EX73
1000BASE-EX74
1000BASE-EX75
1000BASE-EX76
1000BASE-EX77
1000BASE-EX78
1000BASE-EX79
1000BASE-EX80
1000BASE-EX81
1000BASE-EX82
1000BASE-EX83
1000BASE-EX84
1000BASE-EX85
1000BASE-EX86
1000BASE-EX87
1000BASE-EX88
1000BASE-EX89
1000BASE-EX90
1000BASE-EX91
1000BASE-EX92
1000BASE-EX93
1000BASE-EX94
1000BASE-EX95
1000BASE-EX96
1000BASE-EX97
1000BASE-EX98
1000BASE-EX99
1000BASE-EX100



86

27/59

Cable Passthrough

WARNING
DO NOT UNPLUG
EPD
AC POWER
WARNING



CATERPILLAR

ALERTS

- OVERHEAT
- OVERLOAD
- OVERSPEED
- LOW OIL PRESSURE
- LOW OIL LEVEL
- LOW WATER LEVEL
- LOW FUEL LEVEL
- LOW FUEL PRESSURE
- LOW FUEL TEMPERATURE
- LOW FUEL QUALITY
- LOW FUEL FLOW
- LOW FUEL PRESSURE
- LOW FUEL TEMPERATURE
- LOW FUEL QUALITY
- LOW FUEL FLOW
- LOW FUEL PRESSURE
- LOW FUEL TEMPERATURE
- LOW FUEL QUALITY
- LOW FUEL FLOW

STATUS

- START 1
- START 2
- START 3
- STOP
- FAULT
- ALARM

555.5 VDCS

555.5 VDCS

CAT 350-015

AG 4.0

SP4 IS A CDW FAULT. IT WILL RESET TO CLEAR.

COOLANT TEMP

WATER TEMP

WATER FLOW

WATER PRESS

WATER LEVEL

WATER QUALITY

WATER PURITY

WATER CLARITY

WATER TASTE

WATER SMELL

WATER COLOR

WATER PH

WATER ORP

WATER REDOX

WATER CONDUCTIVITY

WATER RESISTIVITY

WATER DISSOLVED SOLIDS

WATER TOTAL SOLIDS

WATER TOTAL DISSOLVED SOLIDS

WATER TOTAL SUSPENDED SOLIDS

WATER TOTAL SOLIDS

WATER TOTAL DISSOLVED SOLIDS

WATER TOTAL SUSPENDED SOLIDS

WATER TOTAL SOLIDS

WATER TOTAL DISSOLVED SOLIDS

WATER TOTAL SUSPENDED SOLIDS

STOP

START

WATER TEMP

WATER FLOW

WATER PRESS

WATER LEVEL

WATER QUALITY

WATER PURITY

WATER CLARITY

WATER TASTE

WATER SMELL

WATER COLOR

WATER PH

WATER ORP

WATER REDOX

WATER CONDUCTIVITY

WATER RESISTIVITY

WATER DISSOLVED SOLIDS

WATER TOTAL SOLIDS

WATER TOTAL DISSOLVED SOLIDS

WATER TOTAL SUSPENDED SOLIDS

WATER TOTAL SOLIDS

WATER TOTAL DISSOLVED SOLIDS

WATER TOTAL SUSPENDED SOLIDS

WATER TOTAL SOLIDS

WATER TOTAL DISSOLVED SOLIDS

WATER TOTAL SUSPENDED SOLIDS

WILSON

Programming Services Only

WILSON

WILSON

Programming Services Only

WILSON

WILSON

Programming Services Only

WILSON

WILSON

Programming Services Only

WILSON

WOODWARD

SEL-7000

WOODWARD

SEL-7000

WOODWARD

SEL-7000

WOODWARD

SEL-7000

WOODWARD

WATER TEMP

WATER FLOW

WATER PRESS

WATER LEVEL

WATER QUALITY

WATER PURITY

WATER CLARITY

WATER TASTE

WATER SMELL

WATER COLOR

WATER PH

WATER ORP

WATER REDOX

WATER CONDUCTIVITY

WATER RESISTIVITY

WATER DISSOLVED SOLIDS

WATER TOTAL SOLIDS

WATER TOTAL DISSOLVED SOLIDS

WATER TOTAL SUSPENDED SOLIDS

WATER TOTAL SOLIDS

WATER TOTAL DISSOLVED SOLIDS

WATER TOTAL SUSPENDED SOLIDS

WILSON

Programming Services Only

WILSON



Two analog gauges are mounted side-by-side. The left gauge is labeled 'FUEL PRESSURE' and has a scale from 0 to 100. The right gauge is labeled 'AIR PRESSURE' and has a scale from 0 to 2000. Below the gauges is a small red and white label that reads 'C-1' and '2000'.

A row of seven indicator lights with labels above them: COOLDOWN (green), OVERHEAT (red), RESERVE POWER (red), OVERVOLTAGE (red), FUEL LEVEL (red), LOSS OF EXHAUSTION (red), and P.W. TO PARALLEL (red). Below these are two more red indicator lights labeled LOW AFTERCOOLER WATER LEVEL and LOW JACKET WATER LEVEL.

A large digital display panel with the 'CATDEPILLAR' logo at the top. The display shows '00.00' and '3654'. Below the display are several buttons and a small keypad. The panel also features various status icons and labels for different engine parameters.

A smaller digital display panel with the 'CATDEPILLAR' logo. It shows '00.00' and '3654'. Below the display are several buttons and a small keypad. The panel also features various status icons and labels for different engine parameters.

A circular digital display showing '00.00'. It has a scale from 0 to 200. The display is labeled 'OIL PRESSURE' and 'PSI'.

A vertical control panel with a green emergency stop button at the bottom and a red stop button at the top. There are also some indicator lights and a small label.

CAT DEPILLAR
SP4 C4
ACA 19

SP4 IS A
COVER PANEL
OFF RESET
TO CLEAR

A control panel with a rotary switch labeled 'PROTECTION' and 'STOP'. There are also two indicator lights and a small label.

A control panel with several buttons and switches. Labels include 'COOLDOWN STOP', 'AIR', 'OFF RESET', 'DICK CLARK IN THE COURTESY HALL', 'EXHAUST STOP', 'ALARM CONTROL', 'TEST', and 'V'. There are also two indicator lights.

A control panel with a rotary switch labeled 'JACKET CONTROL' and 'STOP'. There are also two indicator lights and a small label.

A control panel with several indicator lights and switches. Labels include 'BATTERY CHARGER', 'BATTERY POWER', 'EXHAUST SPACE HEATER', 'JACKET WATER MASTER 1', 'JACKET WATER MASTER 2', 'FUEL', and 'EXHAUST'. There is also a small digital display showing '00.00'.

SECTION 1
 ALARM
 POWER METER
 AC METER
 ENGIN METER
 LAMP TEST
 ALARM TEST
 LOCK
 EXIT
 RESET

Attention: The following instructions should be followed when operating the control panel. Do not touch the controls when the engine is running. Do not touch the controls when the engine is running. Do not touch the controls when the engine is running.

SP4-4
 5566
 G.A.T.

ON
 OFF

CAT DEQUAL
 AP1 G4-4
 ACBA 03

TRANSDUCING
 MANUAL OFF
 RESET

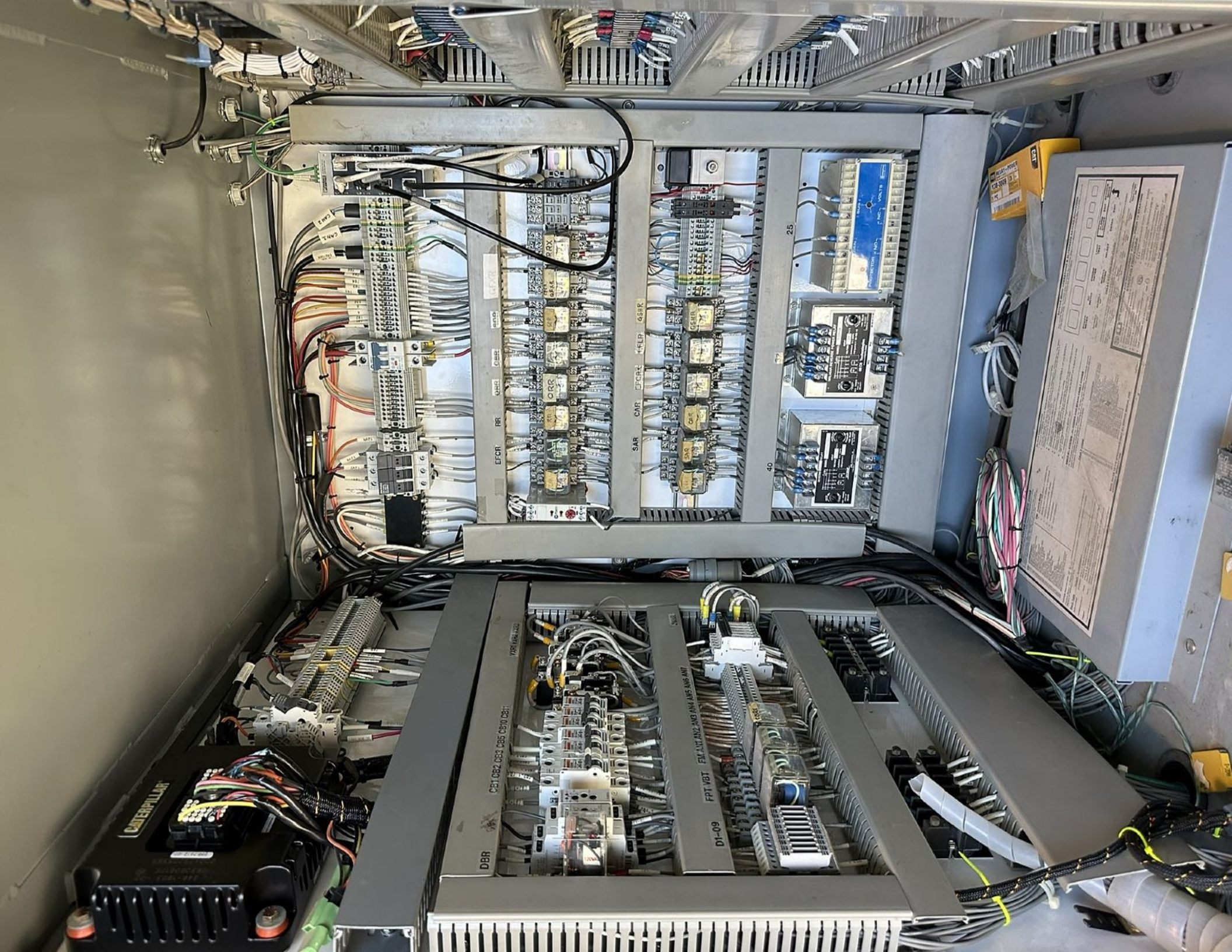
SP4 IS A
 COVER FAULT
 OFF/RESET
 TO CLEAR

CHECK OPEN
 FUEL OUTLET VALVE
 COOLANT STOP
 AUTO
 RESET

ALARM CONTROL
 NOISE
 TEST

OPEN
 CLOSED
 RELEASE CONTROL

BATTERY CHARGER
 SHAKE METER
 SINK METER
 BATTERY CHARGER
 SHAKE METER
 SINK METER
 JACKET METER
 PISTON 1
 PISTON 2
 TANK
 TANK



CATERPILLAR

DBR C81 C82 C83 C85 C810 C811

D1-09 PPT VBT F11 ANT ANT2 ANT3 ANT4 ANT5 ANT6

EFOR RR QM2L QM2R QM2S QM2T

SAR CAR EFCRA HELP 4SHR

40

25

Technical manual with various diagrams and text.

OPEN (Green LED)

CLASD (Red LED)

TUNE SYNCHRONIZING SWITCH ON
BEFORE MANUALLY CLOSING BREAKER

BREAKER CONTROL

TRIP
PULL TO
LOCK

ALARM CONTROL LAMP TEST

ALARM ACK

EMERGENCY STOP

CHECK OPEN FUEL OUTLET VALVE

COOLDOWN STOP

OFF RESET

AUTO

MANUAL STOP

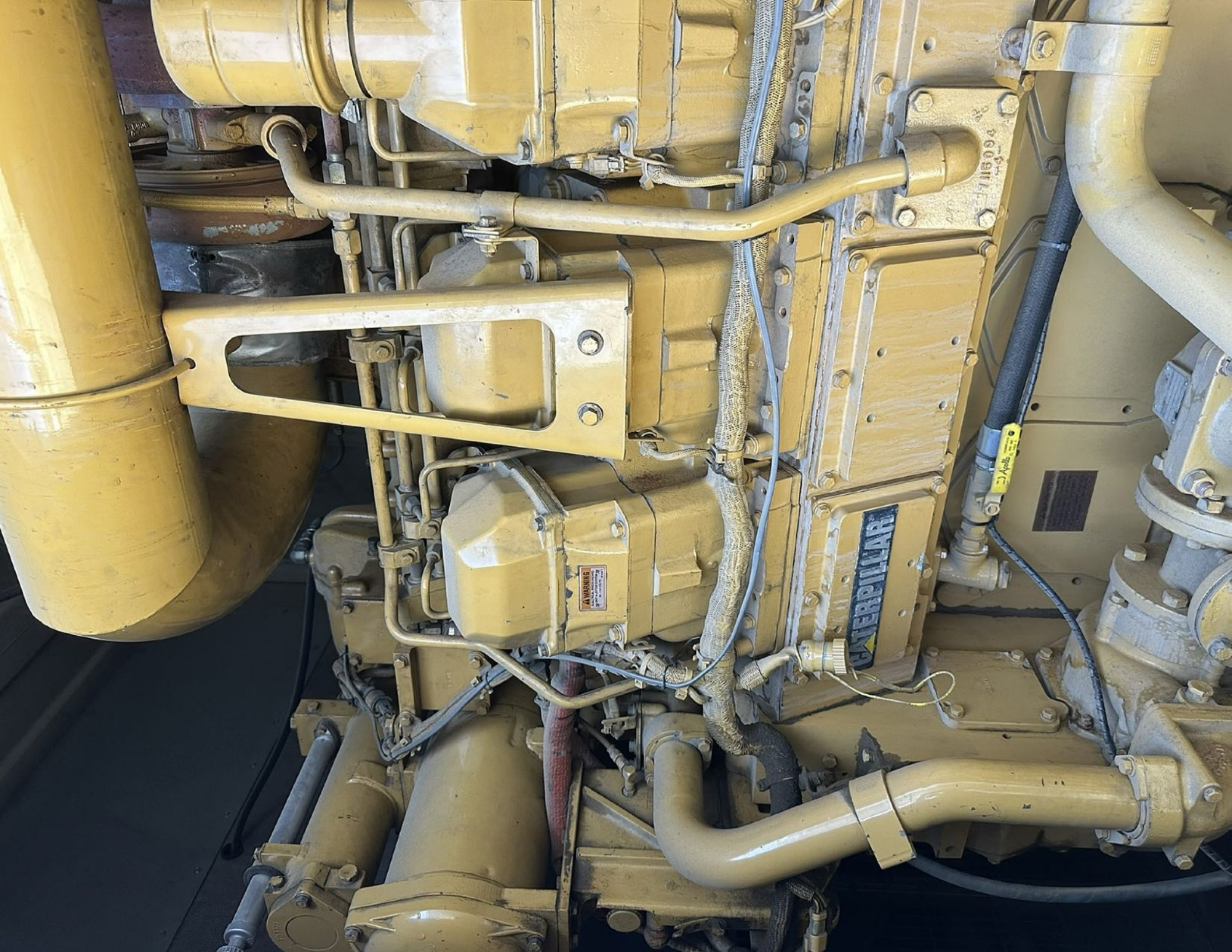
SYNCHRONIZING

MANUAL OFF AUTO

Internal electrical control panel with components:

- Terminal blocks labeled PT1, BPT2, BPT1, and BPT2.
- A large green terminal block labeled 54.
- A central control unit with a digital display and various indicator lights.
- Wiring harnesses and cables organized in bundles.
- A breaker control mechanism with a red stop button and a green start button.
- A manual stop selector switch.
- A digital display showing numerical values.





CATERPILLAR

WARNING
Do not touch
when engine is hot

1118094

Apelle







VENT PIPE

INDUSTRIAL DOOR

117 Imperial Steel

CAUTION
HARVESTING
MAY BE NEEDED



WOODWARD

AS5000

GENERATOR 1

The control panel includes a central LCD screen displaying various parameters such as '151.100 Hz', '151.100 V', '151.100 A', and '151.100 kW'. To the right of the screen are several blue indicator lights and a yellow warning triangle. Below the screen are several blue push-buttons and a red emergency stop button.

SDG&E
Information Only

SDG&E Information Only

START (Green button)

STOP (Red button)

WINCON Programming Devices Only (Wincon device)



LOAD CONTROL (Yellow button)

LOCAL SERVICE (Silver knob)

Two red indicator lights are positioned above the Load Control button.

STOP (Red button)

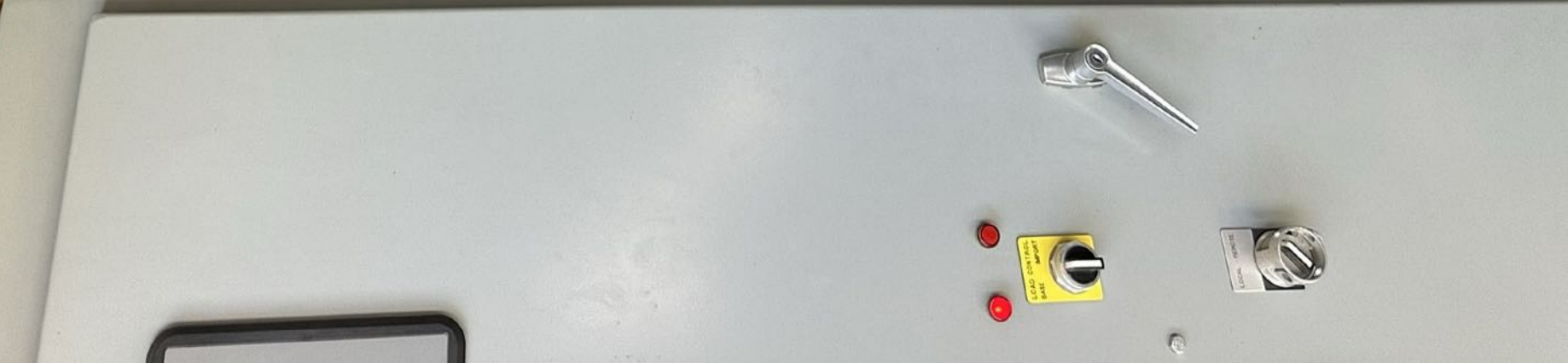
EMERGENCY STOP (Red button)

START (Green button)

WINCON Programming Devices Only (Wincon device)



Generators in Ready Mode

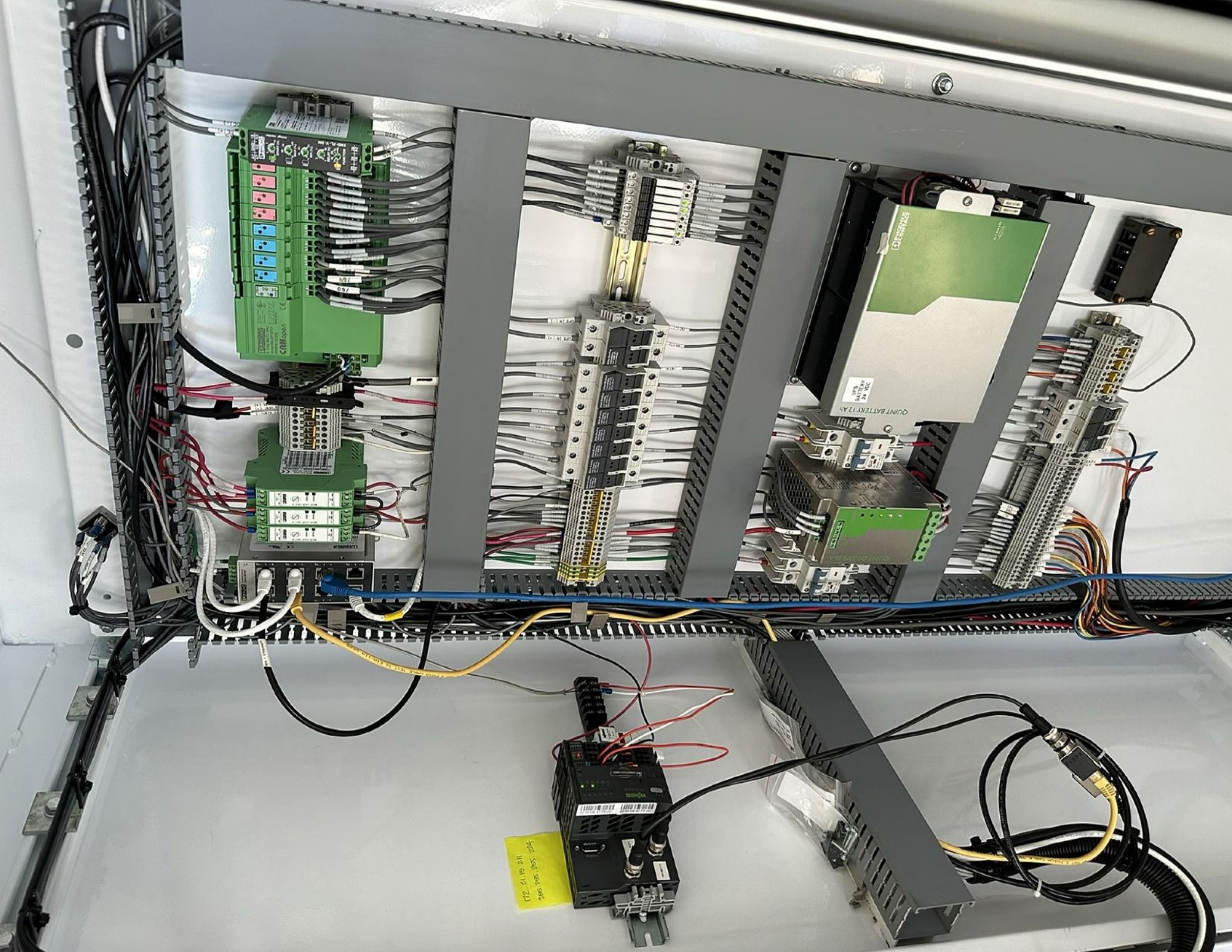


WOODWARD

EASySET

GENERATOR 1









CONTROL
DO NOT
ENTER



CATERPILLAR INC.

IMPORTANT ENGINE INFORMATION

SER NO. 1HZ00318

ENGINE MODEL 3516 DISPLACEMENT 69.0 L

VALVE LASH 0.50 mm INTAKE
1.00 mm EXHAUST

ENGINE FAMILY YCPXL69.0ERK

MAX. ADV. POWER 2123 kW (2847)HP

MAX. RATED SPEED 1800 RPM

MAX. LOW IDLE SPEED 1450 RPM

MAX. FUEL RATE @

MAX. kW 602 mm³/STROKE

MAX. INITIAL TIMING DEG. ELECTRONIC

EXHAUST EMISSION EM,DI,TC,ECM,CAC,
CONTROL SYSTEM

THIS ENGINE CONFORMS TO 2000 U.S.
EPA AND CALIFORNIA REGULATIONS LARGE
NON-ROAD COMPRESSION-IGNITION ENGINES.
THIS ENGINE IS CERTIFIED TO OPERATE AT
CONSTANT SPEED ONLY ON COMMERCIALY
AVAILABLE DIESEL FUEL.
DATE OF MANUFACTURE (MONTH) 11 159-2455

GENERATOR SR4B
MODEL 4FN01594
CATERPILLAR
SERIAL NUMBER 144-1952
MADE IN: USA

29 11 00

480

144-1951

4FN01594

CATERPILLAR

GENERATOR SET

MODEL NO. 3408
YEAR 2008

3PHASE 150 KW
150 KW 50 HZ 4
3PHASE 480V 3
CONTINUOUS

GENERATOR DATA

GENERATOR TYPE DESCRIPTION
SERIAL # (IF AVAILABLE)

3PHASE 150 KW
480V
50 HZ
3PHASE

GENERATOR TYPE DESCRIPTION
SERIAL # (IF AVAILABLE)

3PHASE 150 KW
480V
50 HZ
3PHASE

GENERATOR TYPE DESCRIPTION
SERIAL # (IF AVAILABLE)

3PHASE 150 KW
480V
50 HZ
3PHASE

10-1000



66 71 77 82 88 C
F 140 160 160 170 180 190 F
87225

CATERPILLAR®

LOW OIL PRESSURE 

EMERGENCY STOP 

HIGH WATER TEMP 

ENGINE OVERSPEED 

OVERCRANK 

SPARE 1

SPARE 2

SPARE 3

FAULT SHUTDOWN 

FAULT ALARM 







POWER METER AC METER ENGINE METER LAMP TEST ALARM CODES EXIT SERVICE MODE

159-1798

WOODWARD
EASYVIEW

Time	Status	Value
12:00:00	Running	100.0
12:00:01	Running	100.0
12:00:02	Running	100.0
12:00:03	Running	100.0
12:00:04	Running	100.0
12:00:05	Running	100.0
12:00:06	Running	100.0
12:00:07	Running	100.0
12:00:08	Running	100.0
12:00:09	Running	100.0
12:00:10	Running	100.0

CLOSED
OPEN
UTILITY TRANSFER TRIP
AUTO-START SIGNAL RECEIVED
PLC BATTERY LOW
PLC NOT RUNNING

UTILITY BREAKER

SEL
SEL-700G
GENERATOR PROTECTION RELAY

GEN1
GEN2

Allen-Bradley
MicroLogix Plus 300 Micro

HIGH WATER TEMPERATURE
LOW WATER TEMPERATURE
PRESSURE
FUEL
OIL PRESSURE
BATTERY
PLC BATTERY LOW
PLC NOT RUNNING

CATERPILLAR





GENERATOR SET

ENGINE MODEL 3500
YEAR 2000

2281 KVA * 1825 KW 0.8 COS ϕ 60 HERTZ
X PRIME STANDBY CONTINUOUS

GENERATOR DATA

GENERATOR DATA DESCRIPTION
PRIME PLUS 10 PERCENT AVAILABLE

3 PHASE ~ 6 WIRE
X WYE DELTA
X SERIES PARALLEL
GENERATOR 480 VOLTS 2743 AMPS
EXCITATION 23 VOLTS 5.9 AMPS
825 FRAME 1800 REV/MIN

MAXIMUM TEMPERATURE RISE 105 ° C BY RESISTANCE
40 ° C AMBIENT

CLASS H INSULATION
ENCLOSURE TYPE 1000 METERS ALTITUDE

INCLUDE SERIAL NUMBER AND GENERATOR PART
NUMBER FROM GENERATOR SERIAL NUMBER PLATE
WHEN ORDERING PARTS AND IN CORRESPONDENCE.
GEN C/N: 4FN01592
ESO JJH15

118-8452 1



GENERATOR SET

ENGINE MODEL 3500

YEAR 2000

2281 KVA • 1825 KW • 0.8 COS ϕ 60 HERTZ
X PRIME STANDBY CONTINUOUS

GENERATOR DATA

GENERATOR DATA DESCRIPTION

PRIME PLUS 10 PERCENT AVAILABLE

3 PHASE \sim

6 WIRE

X WYE

DELTA

X SERIES

PARALLEL

GENERATOR

480 VOLTS

2743 AMPS

EXCITATION

23 VOLTS

5.9 AMPS

825 FRAME

1800 REV/MIN

MAXIMUM TEMPERATURE RISE 105 ° C BY RESISTANCE

40 ° C AMBIENT

1000 METERS ALTITUDE

CLASS H INSULATION

ENCLOSURE TYPE

INCLUDE SERIAL NUMBER AND GENERATOR PART
NUMBER FROM GENERATOR SERIAL NUMBER PLATE
WHEN ORDERING PARTS AND IN CORRESPONDENCE.
GEN S/N: 4FN01592

ESO: JJH15

118-8452 1

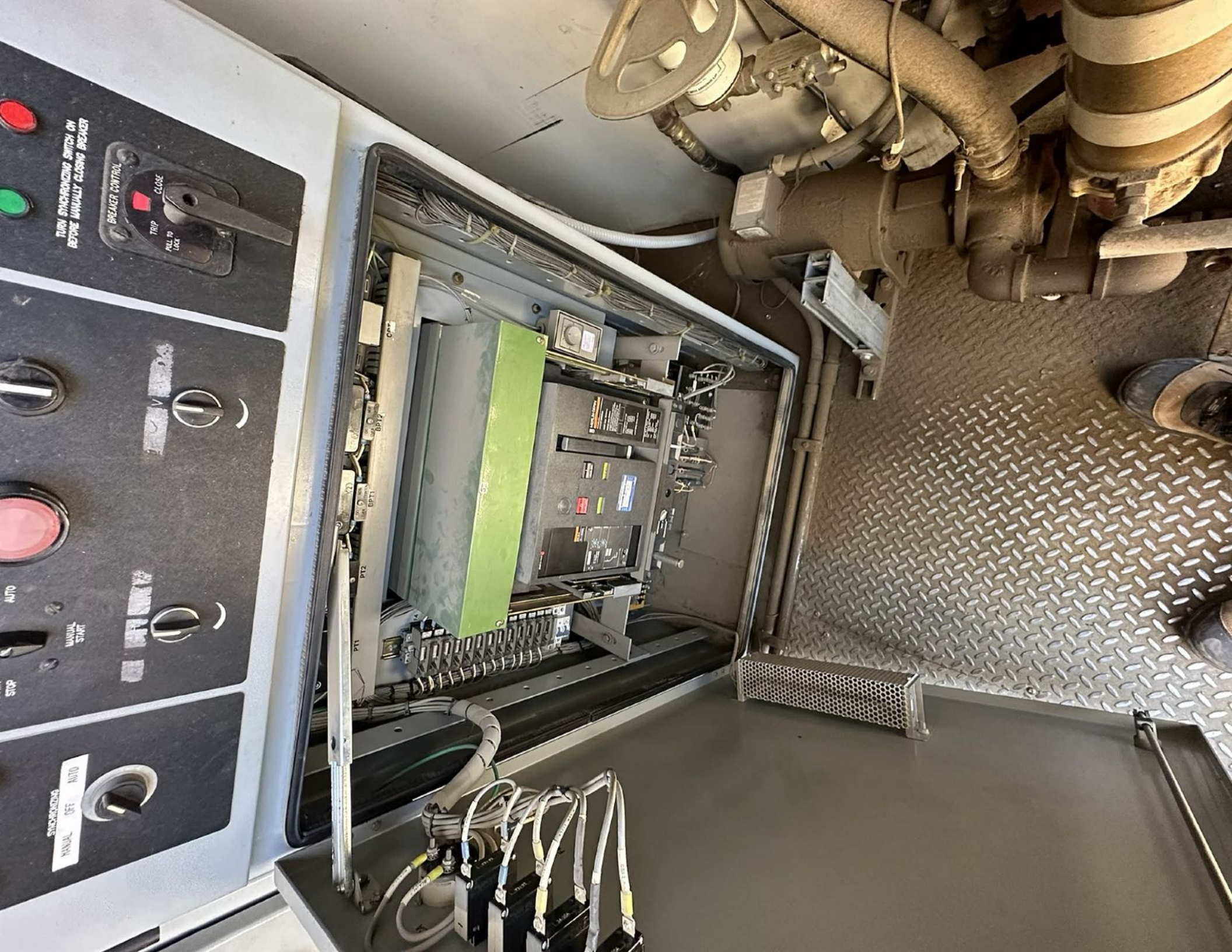












TURN SYNCHRONIZING SWITCH ON BEFORE MANUALLY CLOSING BREAKER

BREAKER CONTROL

TRIP
M.L. 19
LOCK

CLOSE

AUTO

MANUAL START

STOP

SYNCHRONIZING

MANUAL OFF AUTO

PT1

PT2

BPT1

BPT2

CP1



NOT AN
EXIT



DOOR
HOLD BACK









12

CATERPILLAR®

LOW OIL PRESSURE

EMERGENCY STOP

HIGH WATER TEMP

ENGINE OVERSPEED

OVERCRANK

SPARE 1

SPARE 2

SPARE 3

FAULT SHUTDOWN

FAULT ALARM

0 0.0 0

V AVG Hz A TOTAL

0.280 3487

MWh R/min



POWER METER AC METER ENGINE METER LAMP TEST ALARM CODES EXIT SERVICE MODE



L2

CATERPILLAR®

LOW OIL PRESSURE

EMERGENCY STOP

HIGH WATER TEMP

ENGINE OVERSPEED

OVERCRANK

SPARE 1

SPARE 2

SPARE 3

FAULT SHUTDOWN

FAULT ALARM

0 0.0 0

V AVG Hz A TOTAL

0.280 3487

MWh



R/min



POWER METER

AC METER

ENGINE METER

LAMP TEST

ALARM CODES

EXIT

SERVICE MODE



California Department of Pesticide Regulation

AIR RESOURCES BOARD

Manajemen Peralatan dan Fasilitas Pertanian

Registration Number

123916

1/31/20

Expiry Date



PORTABLE EQUIPMENT REGISTRATION PROGRAM



GENERAL
MAY 1950