

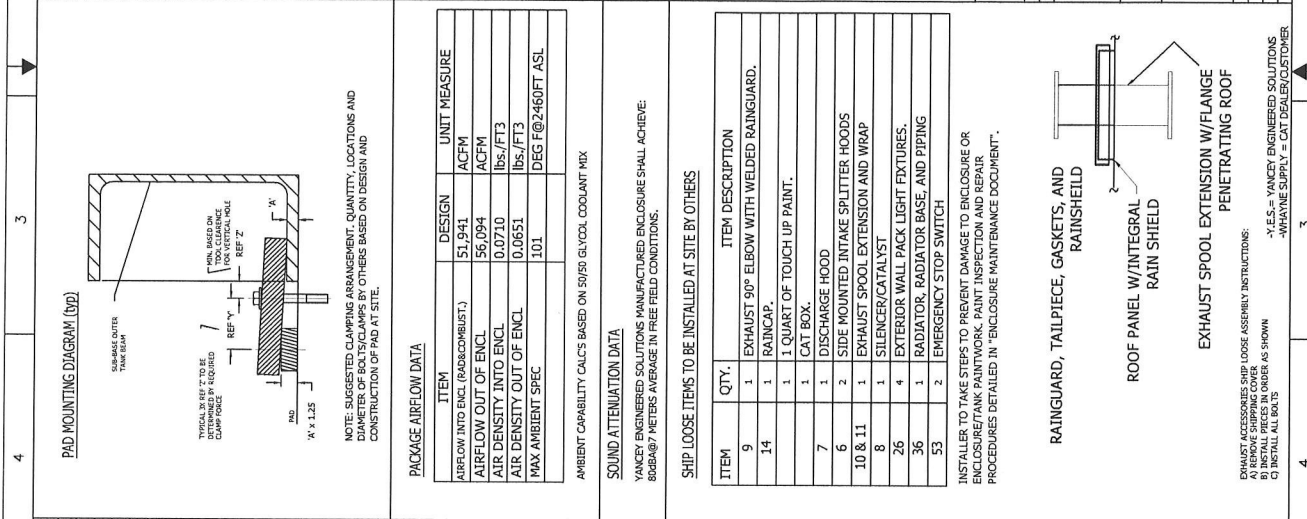
ZONE	LT#	DESCRIPTION	REVISIONS	DATE	APP'D
ALL	A	ORIGINAL SUBMITTAL		8-27-14	MMH
ALL	B	CUSTOMER COMMENTS		9-05-14	MMH
ALL	C	CUSTOMER COMMENTS		10-17-14	MMH
ALL	D	MODIFY INTAKES, AIR CLEANER, FSS		11-07-14	MMH

DRAWING FOR APPROVAL	
NOT FOR CONSTRUCTION PURPOSES	
APPROVED AS SHOWN	DATE
APPROVED AS NOTED	DATE
REVISED AS NOTED	DATE
SIGNATURE	DATE
DATE (PLEASE PRINT)	TITLE

DRAWINGS PROVIDED:	APPROVAL	REL
-80M AND COVER, SHT1	<input type="checkbox"/>	<input type="checkbox"/>
-LAYOUT VIEWS, SHT2	<input type="checkbox"/>	<input type="checkbox"/>
-LAYOUT VIEWS, SHT3	<input type="checkbox"/>	<input type="checkbox"/>
-ELEVATION VIEWS, SHT4	<input type="checkbox"/>	<input type="checkbox"/>
-ELECTRICAL DETAILS, SHT5	<input type="checkbox"/>	<input type="checkbox"/>
-BASE DETAILS, SHT6	<input type="checkbox"/>	<input type="checkbox"/>



ITEM	QTY.	ITEM DESCRIPTION	SHT #	SUPPLY	MFG. DWG. #
1	1	CUSTOMER PROVIDED CATERPILLAR G3520C (2000KW) NATURAL GAS GENSET.	2,3	WHAYNE SUPPLY	307-1564
2	1	ENCLOSURE, 3"x2"x0.125" ALUM. TUBING COVERED IN 0.080" 6063 T52 ALUMI. SHEETING, UJ2200 LISTED WEATHER RESISTIVE, SLOPED ROOF- 3" THICK ROCKWOOL, WALK-IN DESIGN, 800BA@2.3FT. ROOF IS SLOPED WITH 0.125" ALUM FULLY WELDED ONE-PIECE FRAME SYSTEM. INCLUDES GUTTERS, 100MPH WIND RATED. REMOVEABLE END WALL (DISCHARGE SIDE) FOR MAJOR ENGINE MAINTENANCE.	2,3	WHAYNE SUPPLY	
3	2	MAINTENANCE ACCESS DOUBLE DOORS, FRAME ALUM TRIM, FITTED WITH WATER TIGHT RUBBER SEALS, DRIP LEDGES AND ALL FITTED WITH HEAVY DUTY CHROME PLATED REFRIGERATOR STYLE LATCH, KEVED-A-LIKE AND PAD LOCKABLE. ALUMINUM PIANO HINGE, FITTED WITH A MANUAL DOOR-HOLD-BACK LATCH.	2,3	WHAYNE SUPPLY	
4	2	MAINTENANCE ACCESS SINGLE DOORS, FRAME ALUM TRIM, FITTED WITH WATER TIGHT RUBBER SEALS, DRIP LEDGES AND ALL FITTED WITH HEAVY DUTY CHROME PLATED REFRIGERATOR STYLE LATCH, KEVED-A-LIKE AND VENTILATION AIR INTAKE, HOODS SHIP LOOSE.	2,3	WHAYNE SUPPLY	
5	1	INTERIOR ACCESS DOOR, BETWEEN SWITCHGEAR AND GENSET ROOMS.	2,3	WHAYNE SUPPLY	
6	2	SIDE MOUNTED HOODS WITH INTERNAL SPLITTERS, FITTED WITH BIRDSCREENING FOR HORIZONTAL VENTILATION AIR INTAKE, HOODS SHIP LOOSE.	2,3	WHAYNE SUPPLY	
7	1	FRONT MOUNTED HOOD INSTALLED WITH BIRDSCREENING FOR VERTICAL RADIATOR AIR DISCHARGE FITTED WITH MOTORIZED DISCHARGE LOUVERS. SHIP LOOSE.	2,3	WHAYNE SUPPLY	
8	1	EXHAUST SILENCER/CATALYST: 360 X 157, CYLINDRICAL CRITICAL GRADE, CARBON STEEL (SHIP LOOSE)	2,3	WHAYNE SUPPLY	
9	1	EXHAUST 90 DEG ELBOW: EXTERNALLY MOUNTED (SHIP LOOSE)	2,3	WHAYNE SUPPLY	
10	1	EXHAUST SPOOL WITH WELDED RAINGUARD (SHIP LOOSE), LENGTH T.B.D.	2,3	WHAYNE SUPPLY	
11	1	EXHAUST WRAP FOR SPOOL PIECE (SHIP LOOSE), LENGTH T.B.D., INCLUDES FLANGE WRAP	2,3	WHAYNE SUPPLY	
12	1	EXHAUST WRAP FOR FLEX PIECE (SHIP LOOSE), LENGTH T.B.D., INCLUDES FLANGE WRAP	2,3	WHAYNE SUPPLY	
13	1	FLEXIBLE STAINLESS STEEL CONNECTOR TO ENGINE, 14" CAT X 16" ANSL, LENGTH T.B.D.	2,3	WHAYNE SUPPLY	
14	1	RAINCAP (SHIP LOOSE), 16" TUBING.	2,3	WHAYNE SUPPLY	
15	1	OIL & WATER DRAIN BULKHEAD FITTINGS.	2	WHAYNE SUPPLY	
16	1	GENERATOR PACKAGE SUBBASE FRAME: 549" LONG X 168" WIDE X 12" TALL. STEEL DESIGN DIESEL FUEL TANK WITH I-BEAM AND C-CHANNEL. PAINTED BLACK WITH TWO COATS. 8 LIFTING EYES RATED FOR PACKAGE WEIGHT. DIAMOND PLATE DECKING.	2,5	WHAYNE SUPPLY	
17	1	125AMP 3-PHASE LOADCENTER, NEMA-1, 120/208VAC, 4 WIRE.	2,5	WHAYNE SUPPLY	
18	1	400AMP FRAME/300AMP MCB, 3-PHASE PANELBOARD, NEMA-1, 480VAC, 3 WIRE.	2,5	WHAYNE SUPPLY	
19	4	EMERGENCY LIGHTS - BATTERY BACKUP, DUAL HEAD, 120VAC	2,5	WHAYNE SUPPLY	
20	6	120VAC INTERIOR FLOURESCENT LIGHTS WITH GUARD, VAPOR PROOF, 2 LAMPS PT # F3278/850	2,5	WHAYNE SUPPLY	
21	6	24VDC INTERIOR INCANDESCENT LIGHTS, JELLY JAR, VAPOR PROOF, LAMP PT#DP55Z74-100W (24VDC)	2,5	WHAYNE SUPPLY	
22	2	30 MIN TIME FOR DC LIGHTS, 24VDC RATED, NEMA-1	2	WHAYNE SUPPLY	
23	1	30AMP 3-PHASE 480VAC FUSED DISCONNECT SWITCH, NEMA-1	2	WHAYNE SUPPLY	
24	1	VENTILATION FAN, 3-7.5HP MOTOR STARTERS AND OVERLOADS, OFF-AUTO, NEMA-4	2	WHAYNE SUPPLY	
25	1	FIRE EXTINGUISHER 20 LBS, WITH WALL BRACKET, ABC TYPE, FM APPROVED.	2	WHAYNE SUPPLY	
26	4	EXTERIOR WALL PACK LIGHTS, NEMA-3R, HID TYPE, PRE-WIRE BY YES (SHIP LOOSE)	2	WHAYNE SUPPLY	
27	1	GAS DETECTOR NG AND CONTROLLER WITH N/O CONTACTS	2	WHAYNE SUPPLY	
28	1	HEAT DETECTOR WITH N/O CONTACTS, HX-121, THERMAL DETECTOR	2	WHAYNE SUPPLY	
29	3	VENTILATION FANS, AX-90-2735-0625-875, 7.5HP DIRECT DRIVE AXIAL TYPE, SIZED FOR 17 deg F RISE OVER AMBIENT +680VAC-3PH, INCLUDES BIRDSCREENING ON INLET & OUTLET, 1170 RPM, SPL: 786BA@5ft, full speed	2,3,4	WHAYNE SUPPLY	
30	2	GCFC RECEPTACLES	2,3,4	WHAYNE SUPPLY	
31	1	30KVA TRANSFORMER: 3-PHASE, 4W, 120/208Y-408VAC, NEMA-1, WITH LUG KIT # DASKP7100	2,3,4	WHAYNE SUPPLY	
32	5	THREE-WAY SWITCHES	2,3,4	WHAYNE SUPPLY	
33	1	HVAC UNIT - 5 TON A/C (MINIMAL), BARD UNIT, NEMA-3R, PRE-MOUNTED.	2,3,4	WHAYNE SUPPLY	
34	1	THERMOSTAT FOR HVAC	2,3,4	WHAYNE SUPPLY	
35	1	CRANE TROLLEY AND HOIST	2,3,4	WHAYNE SUPPLY	
36	1	RADIATOR BASE- 290" L X 144" W X 12" T C-C CHANNEL AND I-BEAM STEEL CONSTRUCTION, DIAMOND PLATED DECKING, 8 POINT LIFTING EYES RATED FOR BASE AND RADIATOR.	2,3,4	WHAYNE SUPPLY	
37	1	MAKE-UP OIL TANK, PAINTED STEEL, 25 GAL, WITH MOUNTING BRACKET, GRAVITY FILL TO ENGINE.	2,3,4	WHAYNE SUPPLY	
38	1	RADIATOR- REMOTE, PLUMBED AND WIRED PRE-FIT BY YES. CAT DEALER SUPPLIED. MOUNTED TO BASE # 36	2,3,4	WHAYNE SUPPLY	
39	1	480V SWITCHGEAR, 3 SECTIONS, BY CAT DEALER. YES TO MOUNT AND WIRE GENSET OUTPUT TO GEAR	2,3,4	WHAYNE SUPPLY	
40	1	SWGR/GENSET BATTERY CHARGER, BY CAT DEALER. YES TO MOUNT AND WIRE AC AND DC.	2,3,4	WHAYNE SUPPLY	
41	1	JACKET WATER HEATER, BY CAT DEALER. YES TO MOUNT, PLUMB, AND WIRE. CONTROL BRACKET BY YES BATTERIES, BY CAT DEALER. YES TO MOUNT AND WIRE.	2,3,4	WHAYNE SUPPLY	
42	1	BATTERIES, BY CAT DEALER. YES TO MOUNT AND WIRE.	2,3,4	WHAYNE SUPPLY	
43	1	THERMOSTAT, FOR VENTILATION FAN, 120VAC, DRY CONTACTS COOLING CYCLE ONLY.	2,3,4	WHAYNE SUPPLY	
44	1	GAS TRAIN: INSTALLATION ONLY BY YES, INCLUDES EXTENSION TO BULKHEAD FLANGE	2,3,4	WHAYNE SUPPLY	
45	1	AIR INTAKE FILTER: BY CAT DEALER, INSTALLED BY YES.	2,3,4	WHAYNE SUPPLY	
46	1	NG FLEX CONNECTOR: CAT 4" SQ FLG X 4" ANSL, APPROX 14" LONG	2,3,4	WHAYNE SUPPLY	
47	1	NG SUPPRESSION SYSTEM, INSTALLED BY YES WITH FACTORY SUPERVISION	2,3,4	WHAYNE SUPPLY	
48	1	MIRA PANEL FOR CATALYST MONITORING, CUSTOMER SUPPLIED YES TO INSTALL AND WIRE	2,3,4	WHAYNE SUPPLY	
49	1	CARBON DIOXIDE DETECTOR (CO), YES TO INSTALL AND WIRE	2,3,4	WHAYNE SUPPLY	
50	1	YELLOW STORBE LIGHTS, ABOVE EACH DOOR, YES TO FURNISH, INSTALL, WIRED TO ASCO SWGR	2,3,4	WHAYNE SUPPLY	
51	4	GROUNDING PADS, SWITCH 2 HOLE PATTERN ON OPPOSITE CORNERS OF TANK	2,3,4	WHAYNE SUPPLY	
52	2	EMERGENCY STOP SWITCH, NEMA-3R WITH NO & NC CONTACTS	2,3,4	WHAYNE SUPPLY	

ITEM	QTY.	ITEM DESCRIPTION	SHT #	SUPPLY	MFG. DWG. #
9	1	EXHAUST 90 DEG ELBOW WITH WELDED RAINGUARD.	14		
14	1	RAINCAP.	1		
7	1	DISCHARGE HOOD	1		
6	2	SIDE MOUNTED INTAKE SPLITTER HOODS	10 & 11		
8	1	EXHAUST SPOOL EXTENSION AND WRAP	26		
26	4	EXTERIOR WALL PACK LIGHT FIXTURES.	36		
36	1	RADIATOR, RADIATOR BASE, AND PIPING	53		
53	2	EMERGENCY STOP SWITCH			

ITEM	QTY.	ITEM DESCRIPTION	SHT #	SUPPLY	MFG. DWG. #
9	1	EXHAUST 90 DEG ELBOW WITH WELDED RAINGUARD.	14		
14	1	RAINCAP.	1		
7	1	DISCHARGE HOOD	1		
6	2	SIDE MOUNTED INTAKE SPLITTER HOODS	10 & 11		
8	1	EXHAUST SPOOL EXTENSION AND WRAP	26		
26	4	EXTERIOR WALL PACK LIGHT FIXTURES.	36		
36	1	RADIATOR, RADIATOR BASE, AND PIPING	53		
53	2	EMERGENCY STOP SWITCH			

ITEM	QTY.	ITEM DESCRIPTION	SHT #	SUPPLY	MFG. DWG. #
9	1	EXHAUST 90 DEG ELBOW WITH WELDED RAINGUARD.	14		
14	1	RAINCAP.	1		
7	1	DISCHARGE HOOD	1		
6	2	SIDE MOUNTED INTAKE SPLITTER HOODS	10 & 11		
8	1	EXHAUST SPOOL EXTENSION AND WRAP	26		
26	4	EXTERIOR WALL PACK LIGHT FIXTURES.	36		
36	1	RADIATOR, RADIATOR BASE, AND PIPING	53		
53	2	EMERGENCY STOP SWITCH			

INSTALLER TO TAKE STEPS TO PREVENT DAMAGE TO ENCLOSURE OR ENCLOSURE/TANK PAINTWORK. PAINT INSPECTION AND REPAIR PROCEDURES DETAILED IN "ENCLOSURE MAINTENANCE DOCUMENT".

RAINSHIELD, TAILPIECE, GASKETS, AND RAINSHIELD

ROOF PANEL W/ INTEGRAL RAIN SHIELD

EXHAUST SPOOL EXTENSION W/ FLANGE PENETRATING ROOF

YANCEY ENGINEERED SOLUTIONS

GENERAL ARRANGEMENT SUBMITTAL BILL OF MATERIAL/ COVER SHEET

DATE: 11-21-14

SCALE: 1 OF 6

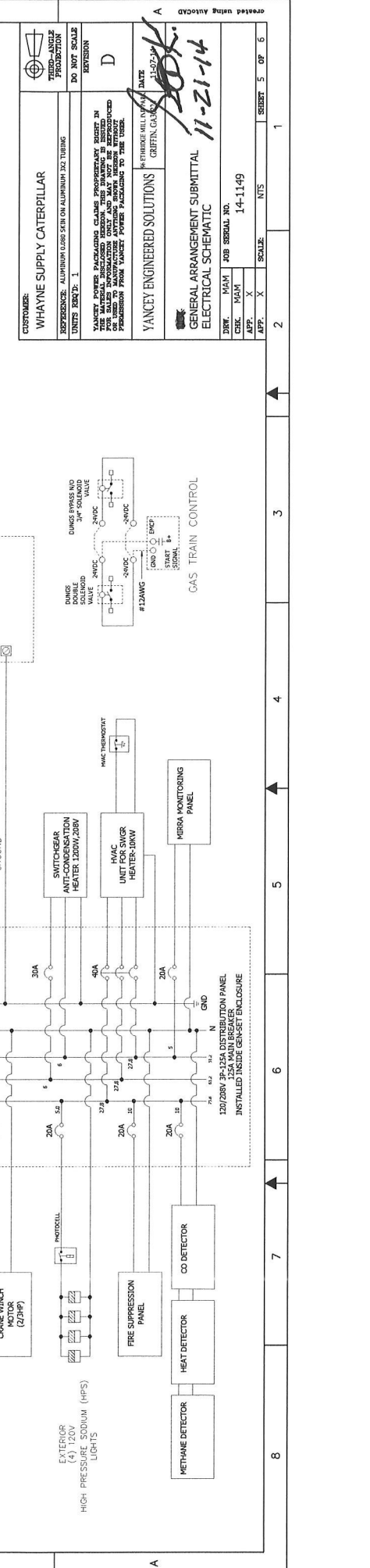
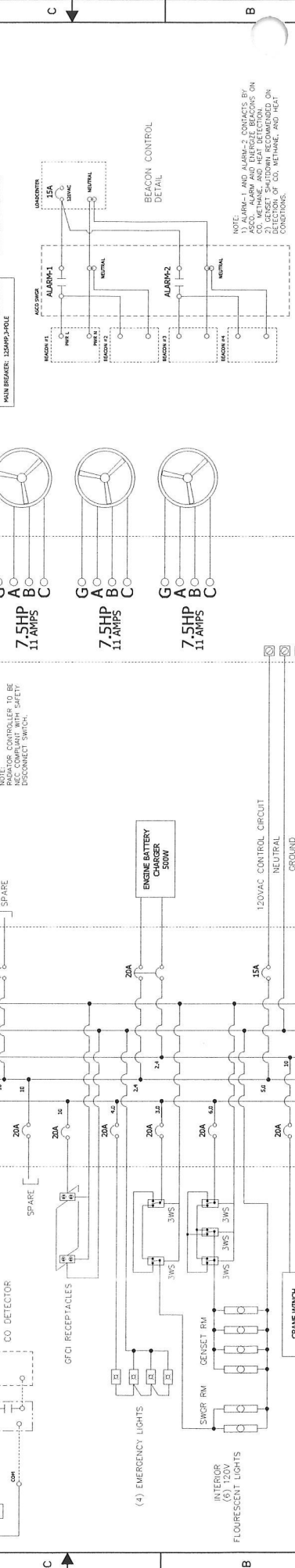






ZONE	LTR	DESCRIPTION	DATE	APPRO
ALL	A	ORIGINAL SUBMITTAL	8-27-14	MAM
ALL	B	CUSTOMER COMMENTS	9-05-14	MAM
ALL	C	CUSTOMER COMMENTS	10-17-14	MAM
ALL	D	MODIFY INTAKES, AIR CLEANER, FSS	11-07-14	MAM

DESCRIPTION	AMP LOAD	1	2	3	4	5	6	7	8
SPARE		1	1	1	1	1	1	1	1
GFCI RECEPTACLES		1	1	1	1	1	1	1	1
EMERGENCY & INTERIOR INCANDESCENT LIGHTS		1	1	1	1	1	1	1	1
INTERIOR FLOUORESCENT LIGHTS		1	1	1	1	1	1	1	1
EXTERIOR HPS LIGHTING		1	1	1	1	1	1	1	1
FIRE SUPPRESSION PANEL		1	1	1	1	1	1	1	1
FIRE SUPPRESSION PANEL		1	1	1	1	1	1	1	1
TOTAL LOAD PER PHASE		75.8	61.2	51.2					
MAIN BREAKER: 125AMP-3POLE									



NOTE: 1. ALARM-1 AND ALARM-2 CONTACTS BY THE MANUFACTURER ARE WIRING IN THE MATERIAL SPECIFIED HEREON. THIS DRAWING IS BASED ON THE ASSUMPTION THAT THE CONTACTS ARE WIRING IN THE MATERIAL SPECIFIED HEREON. THE CONTRACTOR SHALL VERIFY THE WIRING IN THE MATERIAL SPECIFIED HEREON BEFORE PROCEEDING WITH THE INSTALLATION OF THE CONTACTS. THE CONTRACTOR SHALL BE RESPONSIBLE FOR THE CORRECTION OF ANY DEFICIENCIES IN THE MATERIAL SPECIFIED HEREON.

REFERENCE: ALUMINUM DIE-CAST SKIN ON ALUMINUM 304 TUBING

UNITS REQ'D: 1

DO NOT SCALE

VERSION

DATE: 11-07-14

DRW: MAM

CHK: MAM

APP: X

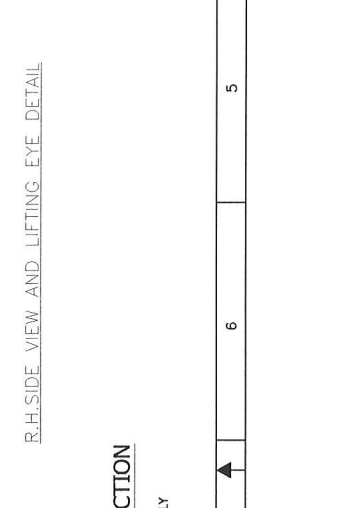
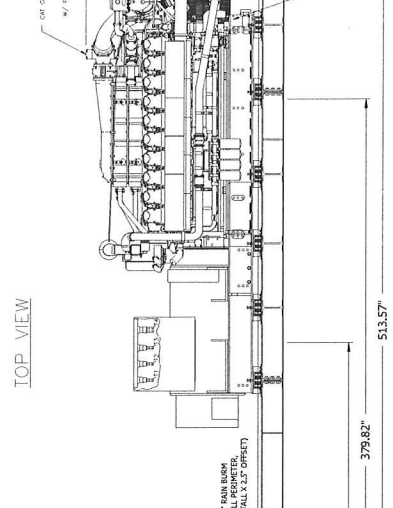
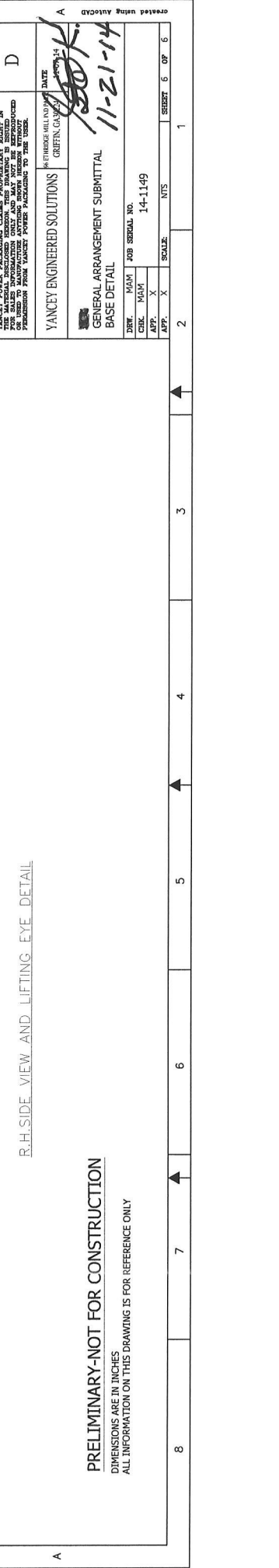
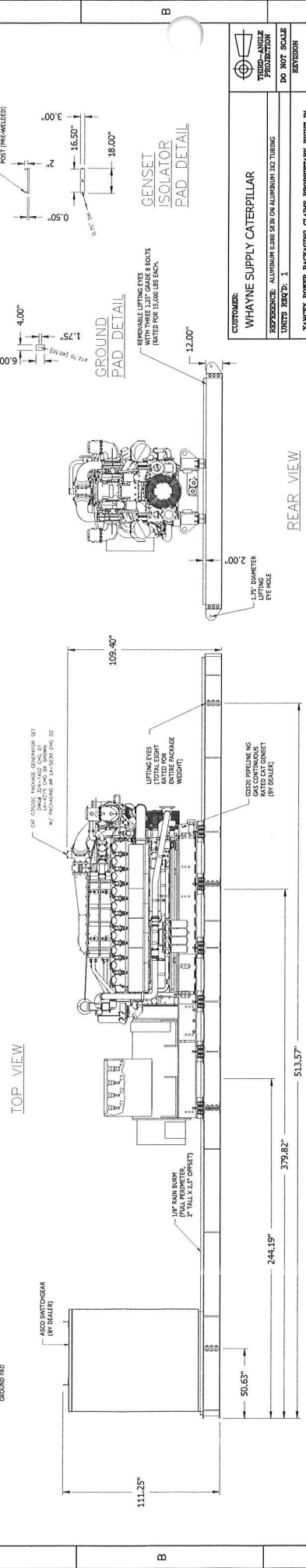
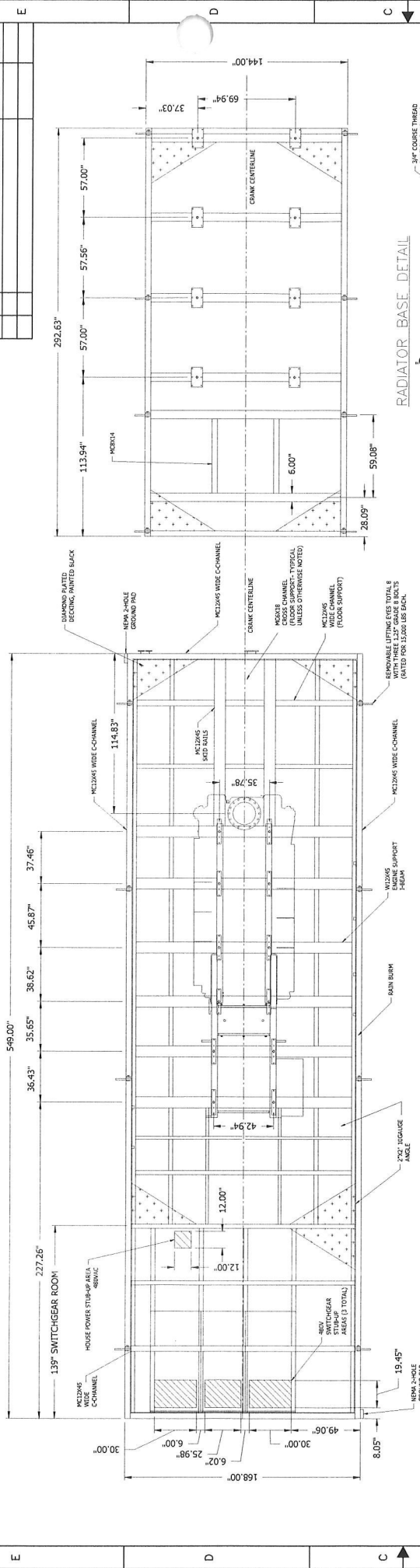
SCALE: 1/4"=1'-0"

SHEET: 5 OF 6

CREATED USING AUTOCAD

REVISIONS		
ZONE	LR	DESCRIPTION
ALL	A	ORIGINAL SUBMITTAL
ALL	B	CUSTOMER COMMENTS
ALL	C	CUSTOMER COMMENTS
ALL	D	MODIFY INTAKES, AIR CLEANER, FSS

DATE	APTD
8-27-14	MAM
9-05-14	MAM
10-07-14	MAM
11-07-14	MAM



**PRELIMINARY-NOT FOR CONSTRUCTION**  
 DIMENSIONS ARE IN INCHES  
 ALL INFORMATION ON THIS DRAWING IS FOR REFERENCE ONLY

CUSTOMER:	WHAYNE SUPPLY CATERPILLAR
REFERENCE:	ALUMINUM DRAIN SKIN ON ALUMINUM 303 TURNING
UNITS:	FEET - INCHES
REVISION:	D
DATE:	11-21-14
BY:	GRiffin, GA
CHECKED BY:	MAM
APP.:	X
SCALE:	1:4-1149
SHEET:	6 OF 6