



GenPowerSource™

G20-G575



PORTABLE POWER
Powerful. Dependable. Global.

READY TO RENT



Designed for the construction and rental markets, GenPowerSource is sure to please the user with its silent, easy and safe operation. GenPowerSource is robust, cost-effective, easy to handle and low maintenance.



EMERGENCY AND DISASTER RELIEF



SPECIAL EVENTS

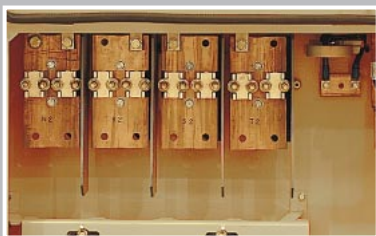


REMOTE POWER



CONSTRUCTION

The machines are extra quiet, easy to operate, yet reliable, extremely tough and easy to maintain. These qualities are essential to meet the demanding requirements of the construction, rental, special events, and emergency power applications.



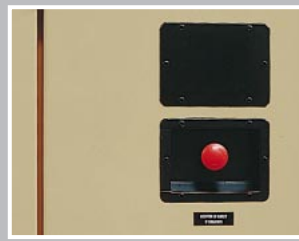
Direct hook-up with terminal dividers



Receptacles (G20-G190)



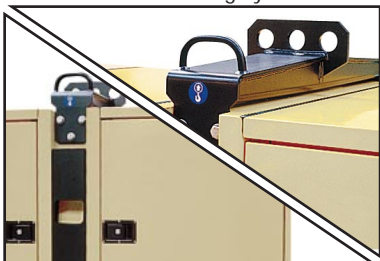
Voltage selector switch



External emergency shutdown pushbutton

SAFE & EASY OPERATION

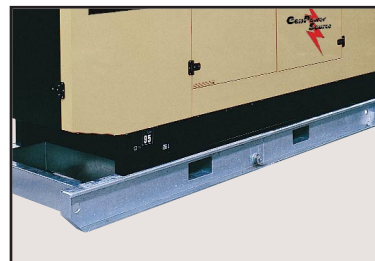
Central lifting eye



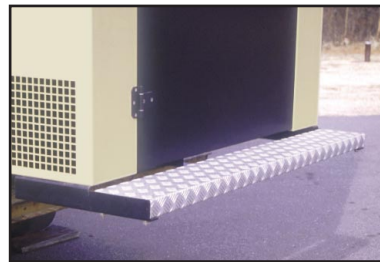
Built-in ladder shown below (G235-G575)



Easy stacking



Optional dragging skid



Stepping platform (G500-G575) with skid option

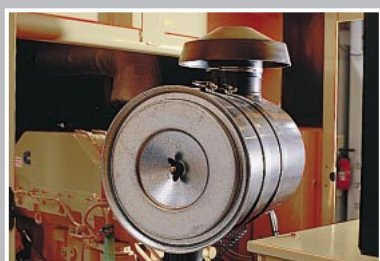


Optional trailer

EASY TO HANDLE



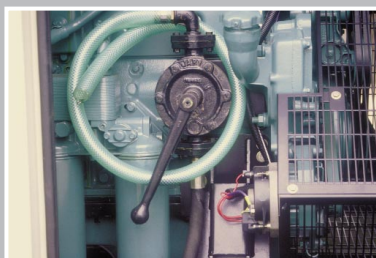
Radiator cleaning access



Air-filter with replaceable cartridge



Battery cut-off-switch



Oil drain pump

PAINTING	SURFACE TREATMENT			
POLYESTER POWDER COAT PAINTING THICKNESS 100µ	RINSING IN DE-MINERALISED WATER	CHROMIC PASSIVATION	RINSING IN TOWN WATER	PHOSPHATE DEGREASING

Anti corrosion preparation

EASY TO MAINTAIN

GenPowerSource™

G20-G40



G90-G115



G235-G260



G500-G575



G50-G80



G145-G190



G295-G405



Control Panels

G20-G40

FEATURES:

- Key Start
- Hour meter
- 7 position volt-meter switch
- 4 position ammeter switch
- Low oil pressure indicator
- High engine water temp. indicator
- Battery no-charge indicator



G50-G575

FEATURES:

- Electronic control panel with automatic and manual mode functions
- Manual start
- Voltmeter
- Ammeter
- Hour meter
- Frequency meter
- Fuel level indicator
- Battery charge indicator



Standard & Optional Equipment	G20 G25 G40	G50 G70 G80	G90 G115	G145 G170 G190	G235 G260	G295 G380 G405	G500 G575
Voltage selector switch (120 volts available in all positions)	●	●	●	●	X	X	X
Alternator voltage regulation at +/- 1.5%	●	●	●	●	●	●	●
Alternator vacuum impregnation (for tropical climates)	●	●	●	●	●	●	●
Air-filter with replaceable cartridge	●	●	●	●	●	●	●
Flush external handles	●	●	●	●	●	●	●
Instrument panel lamp	●	●	●	●	●	●	●
3-pole circuit breaker	●	●	●	●	●	●	●
Ladder + central lifting eye	X	X	X	X	X	●	●
Central lifting eye	●	●	●	●	X	X	X
Cold weather starting aid - glow plugs	●	X	X	X	X	X	X
Cold weather starting aid - intake heater	X	X	X	X	●	●	●
Cold weather starting aid - block heater	X	○	○	○	○	○	○
Cold weather starting aid - ether	X	○	○	○	X	X	X
Instrument circuit breakers	X	●	●	●	●	●	●
Voltage adjustment potentiometer	X	●	●	●	●	●	●
Fuel/water separator	●	●	●	●	●	●	●
Battery cut-out switch	●	●	●	●	●	●	●
Oil drainage pump	○	○	○	○	●	●	●
Road trailer with fuel cell	○	○	○	○	○	○	○
- Electric brakes	●	●	●	●	●	●	●
- Hydraulic brakes	○	○	○	○	X	X	X
- 3" pintle eye	●	●	●	●	●	●	●
- 2" ball hitch	○	X	X	X	X	X	X
- 2.31" ball hitch	○	○	○	○	X	X	X
- Towing lights and reflectors	●	●	●	●	●	●	●
Base plate	X	○	○	○	○	○	○
3-way fuel valve (auxiliary fuel hook-up)	○	○	○	○	○	○	○
Electronic governor	X	○	○	○	●	●	●
Customized color schemes	○	○	○	○	○	○	○
Auto start/stop	X	○	○	○	○	○	○
Galvanized skid	○	○	○	○	○	○	○
- Skid (towing/slinging)	●	●	●	●	●	●	●
- Fork pockets	●	●	●	●	X	X	X
- Retention tank	●	●	●	●	●	●	●

- Standard
- Option
- X Not Available

Specifications:*

Model	G20	G25	G40	G50	G70	G80	G90
CSA Approval	YES	YES	YES	YES	YES	YES	YES
Generator							
Make	Leroy Somer	Leroy Somer	Leroy Somer	Leroy Somer	Leroy Somer	Leroy Somer	Leroy Somer
Prime Output (kVA) 480V	18	26	37	50	70	81	90
@ .8 PF 3 phase (kW) 480V	14	21	30	40	56	65	72
Standby Output (kVA) 480V	20	29	41	55	77	89	99
@ .8 PF 3 phase (kW) 480V	16	23	33	44	62	71	79
Generator RPM	1800	1800	1800	1800	1800	1800	1800
Available voltages, single-phase	110, 127, 139, 240, 254, 277 V Switchable			110, 127, 139, 240, 254, 277 V Switchable			
Available voltages, three-phase	208, 220, 240, 415, 440, 480 V Switchable			208, 220, 240, 415, 440, 480 V Switchable			
Frequency (Hz)	60	60	60	60	60	60	60
Insulation Class	H	H	H	H	H	H	H
Voltage Adjusting Rheostat	Yes	Yes	Yes	Yes	Yes	Yes	Yes
Auto. Voltage Reg. - No-load to Full-load	+/- 1.5%	+/- 1.5%	+/- 1.5%	+/- 1.5%	+/- 1.5%	+/- 1.5%	+/- 1.5%
Sound Level (dBA) @ 7 meters, full load	65	66	66	66	66	66	66.7
Motor Starting Capability (HP) @ 35% Dip	7.5	10	15	20	30	35	40
Engine							
Make	Mitsubishi	Mitsubishi	Mitsubishi	John Deere	John Deere	John Deere	John Deere
Model	S4L2-Y162SD	S4Q2-Y162SD	S4S-Y162SD	4045DF150	4045TF150	4045TF150	4045TF250
Full Load Speed (rpm)	1800	1800	1800	1800	1800	1800	1800
Power (BHP) (kW x 1.341)	22	32	45	60	95	95	105
Type	In line	In line	In line	In line	In line	In line	In line
Number of Cylinders	4	4	4	4	4	4	4
Electrical System (volts)	12	12	12	12	12	12	12
Displacement (L)	1.75	2.5	3.33	4.48	4.48	4.48	4.48
Bore (mm)	78	88	94	106	106	106	106
Stroke (mm)	92	103	120	127	127	127	127
Fuel/Cooling	Diesel / Water	Diesel / Water	Diesel / Water	Diesel / Water	Diesel / Water	Diesel / Water	Diesel / Water
Unit Fuel Tank Capacity Limit (Gal / L)	26 / 100	26 / 100	26 / 100	46 / 175	53 / 200	53 / 200	53 / 200
Trailer Fuel Tank Capacity (Gal / L)	41 / 155	41 / 155	41 / 155	70/265	70/265	70/265	129 / 488
Run Time w / Trailer (Hours)							
At 100% load	50.0	33.0	25.0	32.5	26.2	22.5	30.0
At 75% load	66.7	44.0	33.3	43.3	34.9	30.0	40.0
At 50% load	100.0	66.0	50.0	65.0	52.4	45.0	60.0
At 25% load	200.0	132.0	100.0	130.0	104.8	90.0	120.0
Oil Capacity (Gal / L)	1 / 5	2 / 7	2 / 9	4 / 12	4 / 12	4 / 12	4 / 14
Cooling System Capacity (Gal / L)	1 / 5	2 / 8	2 / 9	5 / 19	6 / 24	6 / 24	6 / 24
Controls & Instrumentation							
Control Panel Type	Analog	Analog	Analog	Intelisys	Intelisys	Intelisys	Intelisys
Amps / Prime Power							
480V 3 phase (amps/kVA)	22	31	45	60	93	98	108
240V 3 phase (amps/kVA)	44	63	90	121	185	196	216
208V 3 phase (amps/kVA)	49	71	100	138	194	222	230
120V 1 phase (amps/kVA)	2 x 55	2 x 65	2 x 89	2 x 129	2 x 163	2 x 192	2 x 192
240V 1 phase (amps/kVA)	55	65	89	129	163	192	192
Receptacles w/ individual breakers							
120 V Duplex (amps)	20	20	20	20	20	20	20
120V 3-way twist (amps)	30	30	30	30	30	30	30
240V 3-way twist (amps)	30	30	30	30	30	30	30
120/240 Temporary power (amps)	50	50	50	50	50	50	50
Less Running Gear Dimensions							
Unit Less Running Gear Overall Length (in)	83	83	83	91	106	106	106
Unit Less Running Gear Overall Width (in)	36	36	36	42	42	42	42
Unit Less Running Gear Overall Height (in)	52	52	52	63	63	63	63
Unit Less Running Gear Weight (Wet / Dry)	2029 / 1808	2161 / 1940	2403 / 2161	3550 / 3109	3826 / 3385	3914 / 3429	3870 / 3429
Running Gear Dimensions							
Length w/ Trailer (in)	137	137	137	171	178	178	178
Width w/ Trailer (in)	60	60	60	70	70	70	71
Height w/ Trailer (in) **	76	76	76	88	88	88	89
Height of Trailer bed (in)	23	23	23	23	23	23	24
Gross Vehicle Weight (Wet / Dry)	2985 / 2477	3117 / 2609	3359 / 2830	5067 / 4255	5343 / 4531	5431 / 4575	6200 / 4856

* Specifications are subject to change without notice

** Includes lifting bail, hinges, etc.

*** 120V from each L-N when in 208V, 3-phase. Loads must be balanced.

G115	G145	G170	G190	G235	G260	G295	G380	G405	G500	G575
YES	YES	YES	YES	YES	YES	YES	YES	YES	YES	YES
Leroy Somer	Leroy Somer	Leroy Somer	Leroy Somer	Leroy Somer	Leroy Somer	Leroy Somer	Leroy Somer	Leroy Somer	Leroy Somer	Leroy Somer
111	143	171	193	233	258	296	381	407	500	573
89	114	137	154	186	206	237	305	326	400	458
122	157	188	212	256	283	325	419	448	550	630
98	126	150	170	205	226	260	335	358	440	504
1800	1800	1800	1800	1800	1800	1800	1800	1800	1800	1800
110, 127, 139, 240, 254, 277 V Switchable				Not Available						
208, 220, 240, 415, 440, 480 V Switchable				208,220,240,415,440,480V Reconnectable						
60	60	60	60	60	60	60	60	60	60	60
H	H	H	H	H	H	H	H	H	H	H
Yes	Yes	Yes	Yes	Yes	Yes	Yes	Yes	Yes	Yes	Yes
+/- 1.5%	+/- 1.5%	+/- 1.5%	+/- 1.5%	+/- 1.5%	+/- 1.5%	+/- 1.5%	+/- 1.5%	+/- 1.5%	+/- 1.5%	+/- 1.5%
67	68	68	68	68	68	72	73	73	75	75
45	55	70	75	90	100	110	150	160	200	230
John Deere	John Deere	John Deere	John Deere	Volvo	Volvo	Volvo	Volvo	Volvo	Volvo	Volvo
4045HF150	6068TF250	6068HF150	6068HF150	TWD740GE	TAD740GE	TAD1030GE	TAD1232GE	TAD1232GE	TAD1630GE	TAD1631GE
1800	1800	1800	1800	1800	1800	1800	1800	1800	1800	1800
129	166	196	221	269	298	342	468	468	576	649
In line	In line	In line	In line	In line	In line	In line	In line	In line	In line	In line
4	6	6	6	6	6	6	6	6	6	6
12	12	12	12	24	24	24	24	24	24	24
4.48	6.72	6.72	6.72	7.28	7.28	9.6	11.97	11.97	15.63	15.63
106	106	106	106	107	107	120.65	130.17	130.17	144	144
127	127	127	127	135	135	140	150	150	160	160
Diesel / Water	Diesel / Water	Diesel / Water	Diesel / Water	Diesel / Water	Diesel / Water	Diesel / Water	Diesel / Water	Diesel / Water	Diesel / Water	Diesel / Water
53 / 200	106 / 400	106 / 400	106 / 400	100 / 380	100 / 380	127 / 480	127 / 480	127 / 480	132 / 500	132 / 500
129 / 488	200 / 757	200 / 757	200 / 757	250 / 946	250 / 946	350 / 1325	350 / 1325	350 / 1325	530 / 2006	530 / 2006
24.0	37.6	29.1	26.6	26.1	24.5	27.0	23.5	20.1	21.4	19.5
32.2	50.1	38.8	35.5	34.8	32.6	36.0	31.3	26.8	28.5	26.0
48.3	75.2	58.2	53.3	52.2	49.0	53.9	46.9	40.2	42.8	39.0
96.6	150.4	116.3	106.5	104.4	98.0	107.9	93.8	80.4	85.6	78.0
4 / 14	6 / 22	6 / 22	6 / 22	8 / 29	8 / 29	10 / 36	10 / 38	10 / 38	17 / 64	17 / 64
5 / 20	7 / 27	7 / 26	7 / 26	11 / 42	10 / 37	10 / 37	13 / 48	13 / 48	16 / 60	17 / 64
Intelisys	Intelisys	Intelisys	Intelisys	Intelisys	Intelisys	Intelisys	Intelisys	Intelisys	Intelisys	Intelisys
134	172	206	232	280	310	356	458	490	601	689
268	344	411	464	560	620	712	917	979	1203	1378
304	361	444	500	608	713	766	991	1055	1221	1568
2 x 325	2 x 325	2 x 417	2 x 438	3 x 608 ***	3 x 713 ***	3 x 766 ***	3 x 991 ***	3 x 1055 ***	3 x 1221 ***	3 x 1568 ***
325	325	417	438	NA	NA	NA	NA	NA	NA	NA
20	20	20	20	NA	NA	NA	NA	NA	NA	NA
30	30	30	30	NA	NA	NA	NA	NA	NA	NA
30	30	30	30	NA	NA	NA	NA	NA	NA	NA
50	50	50	50	NA	NA	NA	NA	NA	NA	NA
106	147	147	147	204	204	230	230	230	257	257
42	50	50	50	54	54	58	58	58	66	66
63	69	69	69	88	88	94	94	94	96	96
4112 / 3682	5623 / 4763	5909 / 5049	5909 / 5049	8577 / 7431	8992 / 7850	10628 / 9482	10871 / 9746	11488 / 10364	13539 / 12348	13671 / 12480
178	258	258	258	290	290	323	323	323	356	356
71	78	78	78	95	95	93	93	93	100	100
89	95	95	95	114	114	125	125	125	127	127
24	25	25	25	25	25	31	31	31	31	31
6442 / 5109	8873 / 6613	9159 / 6899	9159 / 6899	12937 / 10041	13352 / 10460	18016 / 14420	18259 / 14684	18876 / 15302	22851 / 17950	22983 / 18082



Portable Power _____
Ingersoll-Rand Company
501 Sanford Ave.
Mocksville, NC 27028

www.portablepower.irco.com

©2001 Ingersoll-Rand Company
2133-G

Form 2133-E
Printed in U.S.A.