



Listing UL/cUL-508A
Type 3R



Mfg. I.D. CP 40941
Mfg. Date 02/2020

Industrial Control Panel Ratings

AC & DC Voltages are supplied from external sources

Source:	1										
V (max):	120VAC										
Ph:	1										
W:	3										
Hz:	60										
FLA:	40										
SCCR:	5kA										

The short circuit rating of this equipment is limited to the lowest short-circuit rating of equipment connected in series, any installed circuit breaker or fused switch, but not more than the assigned section rating. Additional or replacement devices (other than fuses) shall be of the same manufacturer, type designation, and equal to or greater than the interrupting rating of the replaced device or section rating.

Caterpillar Switchgear, LLC
A Caterpillar Electric Power Company
4955 MARCONI DRIVE, ALPHARETTA, GA 30005

Made in U.S.A

Section 2 of 2
Caterpillar: Confidential Green

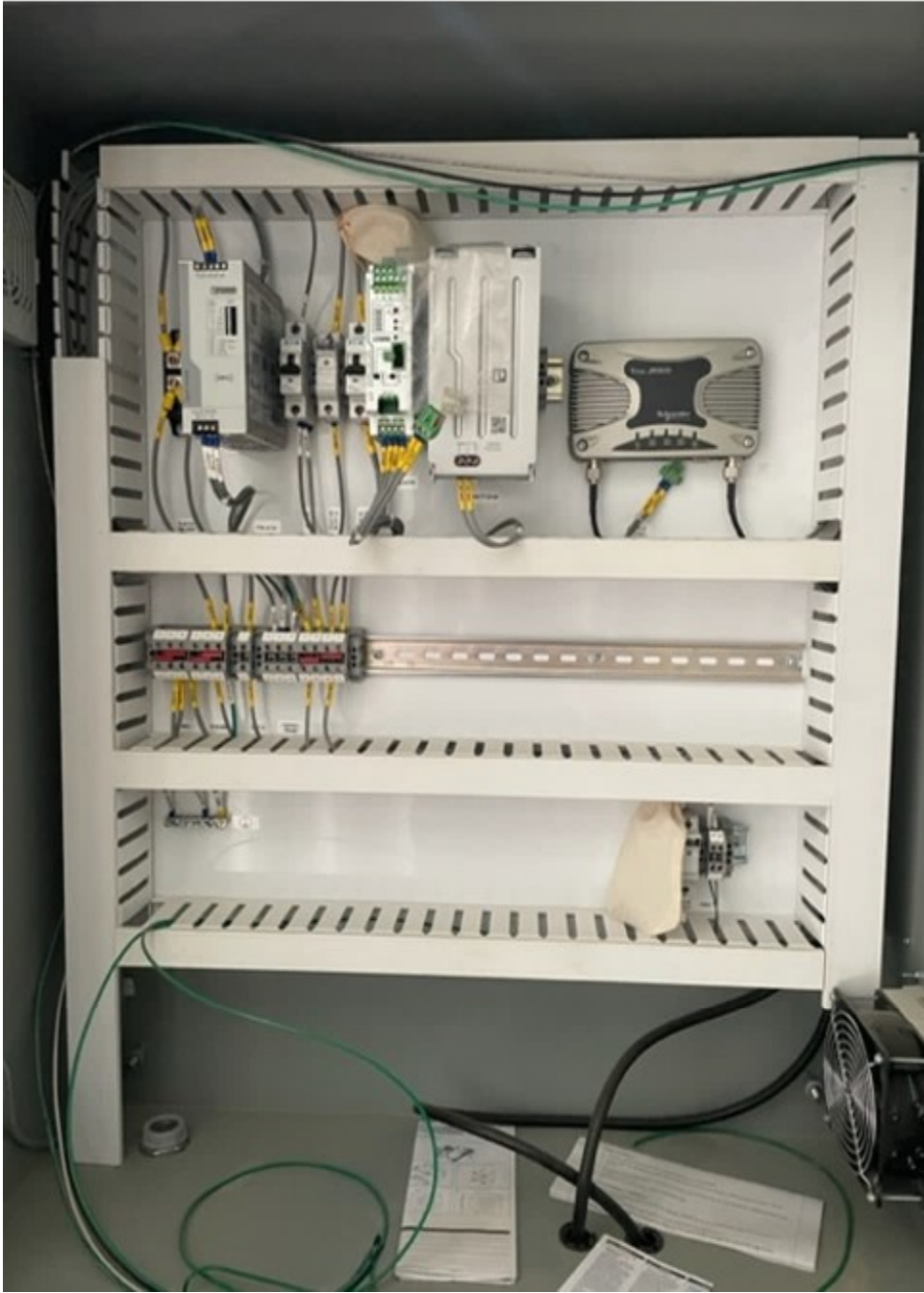
FUSE CHART

DEVICE	VOLTAGE	AMPS	TYPE
FU-A109	300VDC	4A	LPCC

40941 - Pending
Gold

WIRE TYPE / SIZE AND TORQUE REQUIREMENTS

ITEM	WIRE TYPE	SIZE	TORQUE SPEC	NOTE
TOUCHSCREEN CONNECTOR	CU ONLY	20 - 14 AWG	3.1 - 4.4 IN/LBS	FERRULES
PLC/ TSP/ ESW/ MOXA/ DTI	CU ONLY	20 - 14 AWG	3.1 - 4.4 IN/LBS	FERRULES
TB(UT4/25) / DIODE TB	CU ONLY	18 - 10 AWG	5.4 - 6.6 IN/LBS	FERRULES
HORN / PB / PL / SW / RECP	CU ONLY	18 - 14 AWG	8.1 - 9.9 IN/LBS	FERR/FORK/RING
TOUCHSCREEN (SCREW #6)	CU ONLY	18 - 14 AWG	8.1 - 9.9 IN/LBS	FORK/RING LUG
PWR RLY-COIL (SCREW #6)	CU ONLY	16 - 10 AWG	8.1 - 9.9 IN/LBS	RING LUG
PPXII-VOLTAGE / CTRL-RLY	CU ONLY	16 - 10 AWG	8.1 - 9.9 IN/LBS	RING LUG/FERR
PROTECTIVE RELAY'S	CU ONLY	16 - 10 AWG	8.1 - 9.9 IN/LBS	FORK/RING LUG
SYNCH CHECK RELAY	CU ONLY	16 - 12 AWG	10.8 - 13.2 IN/LBS	FERR/FORK/RING
PPXII-CURRENT	CU ONLY	14 - 10 AWG	10.8 - 13.2 IN/LBS	RING LUG
PWR RLY (SCREW #8)	CU ONLY	16 - 10 AWG	10.8 - 13.2 IN/LBS	RING LUG
TB(UT10/6) / PS/ UPS/ BATT.	CU ONLY	18 - 4 AWG	11.7 - 14.3 IN/LBS	FERRULES
FUSE BLOCKS / TEST SW	CU ONLY	18 - 10 AWG	14.4 - 17.6 IN/LBS	FERR/FORK/RING
CBCS / B6-DEVICE	CU ONLY	18 - 10 AWG	14.4 - 17.6 IN/LBS	FORK/RING LUG
FUSE DISC / CTSB/ FAZ CB	CU ONLY	18 - 4 AWG	14.4 - 17.6 IN/LBS	FERR/FORK/RING
GND BAR/ PWR DIODE	CU - AL	18 - 10 AWG	14.4 - 17.6 IN/LBS	FERR/RING LUG















BAIRD MANUFACTURING CO., INC., 1914 RANDOLPH DRIVE, BRYAN, OHIO 43080 U.S.A.

MODEL	APPROVED HEATER PACKAGE	VAC	HZ	PH	(1) SINGLE CIRCUIT		(2) DUAL CIRCUIT	
					MINIMUM CIRCUIT CAPACITY	MAX. FUSE OR CKT. BREAKER	MINIMUM CIRCUIT CAPACITY	MAX. FUSE OR CKT. BREAKER
() 1048AC-000	NONE	230/200	60	1	35	50	N/A	N/A
() 1048AC-002	EMC-000	230/200	60	1	35	50	N/A	N/A
() 1048AC-005	EMH42C-005	230/200	60	1	35	50	N/A	N/A
() 1048AC-010	EMH42C-010	230/200	60	1	59	60	N/A	N/A
() 1048AC-015	EMH42C-015	230/200	60	1	85	90	59/26	68/30
() 1048AC-020	EMH42C-020	230/200	60	1	111	125	59/52	68/60

SHORT-CIRCUIT CURRENT: SKA RMS SYMMETRICAL
 BRANCH CIRCUIT SELECT CURRENT 21.8 OPERATING VOLTAGE RANGE: 197 VAC MIN. 253 VAC MAX.
 SERIAL NUMBER 332C203756691-02 ASSEMBLED IN THE U.S.A.

SUITABLE FOR OUTDOOR USE ALL MOTORS ARE THERMALLY OR ELECTRICALLY PROTECTED

	VAC	HZ	ELECTRICAL RATINGS		LRA	SLA
			PH	HP		
COMPRESSOR	230/200	60			117/117	17.2/19.8
OUTDOOR MOTOR	230/200	60		1/3	1.6	
INDOOR MOTOR	230/200	60		3/4	3.0	
250P-05	230/200	60			0.5	
HEATER PACKAGE				KW	FLA	(OPTIONAL)
EMH42C-005	240/200	60		5/3.75	20.8/18.1	
EMH42C-010	240/200	60		18/7.5	41.6/36.2	
EMH42C-015	240/200	60		15/11.25	62.5/54.1	
EMH42C-020	240/200	60		20/15	83.2/72.1	

Complies to Standard for Safety Heating and Cooling Equipment ANSI/UL 1995A T1.2 No. 230-95

FACTORY CHARGED R410A: 118 OZ. DESIGN PRESSURE PSIG 448 HIGH 236 LOW



--- CLEARANCES ---
 UNIT CASING SUITABLE FOR 0" MIN. CLEARANCE
 OUTLET DUCT CLEARANCE: 1/4" INCH MINIMUM FOR AT LEAST FIRST 3 FEET OF DUCT. REFER TO INSTALLATION INSTRUCTIONS FOR ADDITIONAL CLEARANCE INFORMATION. MAXIMUM OUTLET AIR TEMPERATURE: 200 DEG. F
 THIS MODEL HAS BEEN TESTED AT STATIC PRESSURES FROM 0 TO 5 IN. WATER COLUMN. CONSULT INSTALLATION INSTRUCTIONS FOR MAXIMUM PERMITTED STATIC PRESSURE FOR SPECIFIC EQUIPMENT APPLICATION

INSTALLER: WHEN INSTALLING OPTIONAL BAIRD HEATER PACKAGE: PERMANENTLY MARK THIS SERIAL PLATE TO SHOW THE INSTALLED HEATER PACKAGE

(1) ONLY BAIRD HEATER PACKAGES LISTED ABOVE ARE SUITABLE FOR USE WITH THIS UNIT. USE OF ANY OTHER HEATER PACKAGE VOIDS WARRANTY AND COULD CAUSE SAFETY HAZARD.
 (2) FOR HAZARDOUS VOLTAGE (HVC) TYPE PER NEC OR EQUIVALENT

COMPLIES WITH THE EFFICIENCY REQUIREMENTS OF ASHRAE/IESN 90.1-2013 AND IS CERTIFIED TO ARI 3150B48 (SINGLE PACKAGE HEATING UNITS) COMMERCIAL PRODUCT - NOT INTENDED FOR RESIDENTIAL APPLICATIONS

5095-839-2799






Listing UL/cUL-508A
 Type 3R

CAT® Electric
 Power

Mfg. I.D. CP 40941
 Mfg. Date 02/2020

Industrial Control Panel Ratings
 AC & DC Voltages are supplied from external sources

Source:	1																		
V (max):	120V/AC																		
Phi:	1																		
W:	3																		
Hz:	60																		
FLA:	40																		
SCCR:	5KA																		

The short circuit rating of this equipment is limited to the lowest short-circuit rating of equipment connected in series, any installed circuit breaker or fused switch, but not more than the assigned section rating. Additional or replacement devices (other than fuses) shall be of the same manufacturer, type designation, and equal to or greater than the interrupting rating of the replaced device or section rating.

Section 1 of 2
 Caterpillar: Confidential Green

Caterpillar Switchgear, LLC
 A Caterpillar Electric Power Company
 4955 MARCONI DRIVE, ALPHARETTA, GA 30005

Made in U.S.A

Series Rating Information Manual To Be Consulted Before Installation. If any Functions/Components & Series Ratings are To Be Used, Must Be 480V/277V Per Requirements Manual # 1.

Automatic Trip Of Circuit Breaker Is Initiated By Handle Position Moving Between "OFF" and "ON" Release Governed By Moving Handle To "OFF" Then To "ON" Position. (SEE SCHEDULE FOR CU OR AL) Use 10°C Min. Conditions. Use Equipment Grounding Terminal Assembly (EGTCA) Unless Grounding Is Accomplished Through Metal Conductor Raceway.

Breakers To Be Installed Or Performance Units Must Be From The Same Manufacturer Or The Same Type And Have Equal Or Greater Interrupting Ratings.

Frame Size	Rating	Manufacturer	Interrupting Rating	Notes
1 1/2"	1000	ABB	1000	
1 1/2"	1000	GE	1000	
1 1/2"	1000	Siemens	1000	
1 1/2"	1000	Westinghouse	1000	
1 1/2"	1000	Other	1000	

Any Break On This Panel Will Affect A Breaker On The Same Frame Size As The Opposite Breaker.
Breaker - Switch Section On This Panel Will Affect One Of The Following Breakers, Switches or Surge Devices Any 1000 Amp Frame Size.

SPACE	BREAKERS	FUSED PROTECTIVE DEVICES	CONNECTION KIT
1-1/2" (300mm)	1000 AMP 1P/2P	None	ATPL400
1-1/2" (300mm)	1000 AMP 3P/4P	None	ATPL400
1-1/2" (300mm)	1000 AMP 1P/2P	None	ATPL400
1-1/2" (300mm)	1000 AMP 3P/4P	None	ATPL400
1-1/2" (300mm)	1000 AMP 1P/2P	None	ATPL400
1-1/2" (300mm)	1000 AMP 3P/4P	None	ATPL400

SECTION NUMBER	AMP	100 AMP SWITCH & FUSE CONTROL NO.	100 AMP SWITCH & FUSE CONTROL NO.	CONNECTION KIT
1-1/2" (300mm)	1000	1000	1000	ATPL400
1-1/2" (300mm)	1000	1000	1000	ATPL400
1-1/2" (300mm)	1000	1000	1000	ATPL400
1-1/2" (300mm)	1000	1000	1000	ATPL400
1-1/2" (300mm)	1000	1000	1000	ATPL400

Labels and markings on this equipment are in accordance with the requirements of the National Electrical Code (NEC) and other applicable codes and standards. The information provided on this label is for informational purposes only and does not constitute a warranty of any kind. Eaton reserves the right to change the specifications of this equipment without notice.

DANGER

EATON®

Pow-R-Line PRL-C Switchboard

Volts	480Y/277V	~	G. O. No.	LSR0022955	
Phase	3	Wire	4	Item No.	003
Frequency	60 Hz		Section No.	3 Of 3	
Mfg. At	ELP		Date	10/28/2019	
Current Ratings - Amperes					
Supply	1600	Neut.	1600		
Section	1600	Neut.	1600		
Enclosure Type	3R				

The Short-Circuit Rating is equal to the lowest:

- 1) short-circuit current rating of any switchboard section connected in series, and
- 2) short-circuit current rating of any installed paneboard that has a short-circuit current rating marked on it, and
- 3) The following:
 - 3a) interrupting rating of any installed circuit breaker or fused switch (excluding those located in a control circuit), or
 - 3b) interrupting rating of any combination of series-connected circuit breakers or fused switches as described within the attached Series Ratings Information Manual (Information Manual (IM) 1C96944H01), but is limited to a maximum of 65kA rms symmetrical amperes at 480 volts maximum.

900P025H01 R15

Assembled in USA



Series Rating Information Manual To Be Consulted Before Installation Of Any Panelboard/Switchboard If Series Ratings Are To Be Used. Call 1-800-450-2678 For Replacement Manual If Lost.

Automatic Trip Of Circuit Breaker Is Indicated By Handle Position Moving Between "On" and "Off". Restore Service By Moving Handle To "On".

TERMINALS ARE SUITABLE FOR CU OR AL - Use 75°C Min. Conductors.

Use Equipment Grounding Terminal Assembly #572726 Unless Grounding Is Accomplished Through Metal Conductor Raceway.

Devices To Be Installed Or Replacement Units Must Be From The Same Manufacturer Of The Same Type And Have Equal Or Greater Interrupting Ratings.

Breaker Rating	Interrupting With Surge*		Surge Values For Copper Or Aluminum Bus Bar Connections	
	Available	Required	Available	Required
100	100	100	200,000	100,000
150	150	150	300,000	150,000
200	200	200	400,000	200,000
250	250	250	500,000	250,000
300	300	300	600,000	300,000
350	350	350	700,000	350,000
400	400	400	800,000	400,000
450	450	450	900,000	450,000
500	500	500	1,000,000	500,000
600	600	600	1,200,000	600,000
700	700	700	1,400,000	700,000
800	800	800	1,600,000	800,000
900	900	900	1,800,000	900,000

*See Working On Breaker For Proper Safety.

Any Space On This Panel Will Accept A Breaker Of The Same Frame Size As The Opposite Breaker.

Breaker - Switch Space On This Panel Will Accept One Of The Following Breakers, Switches or Surge Devices Along With Their Respective Connector Kit:

SPACE	BREAKERS	Surge Protective Device (SPD)	CONNECTOR KIT
4-1/2 (24 Poles)	1 POLE 250 AMP/100 kVAC	None	APPL400
	1 POLE 250 AMP/100 kVAC/2000 VDC	None	APPL400
4-1/2 (24 Poles)	3 POLE 250 AMP/100 kVAC/2000 VDC	None	APPL400
	3 POLE 250 AMP/100 kVAC/2000 VDC/2000 VDC	None	APPL400
4-1/2 (24 Poles)	3 POLE 75 CURRENT LIMITING Single	None	APPL400
	3 POLE 75 CURRENT LIMITING 2 Pole	None	APPL400
	3 POLE 75 CURRENT LIMITING 3 Pole	None	APPL400
4-1/2 (24 Poles)	3 POLE 250 AMP/100 kVAC/2000 VDC	None	APPL400
	3 POLE 250 AMP/100 kVAC/2000 VDC/2000 VDC	None	APPL400
	3 POLE 250 AMP/100 kVAC/2000 VDC	None	APPL400
	3 POLE 250 AMP/100 kVAC/2000 VDC	None	APPL400
4-1/2 (24 Poles)	3 POLE 250 AMP/100 kVAC/2000 VDC	None	APPL400
	3 POLE 250 AMP/100 kVAC/2000 VDC	None	APPL400
	3 POLE 250 AMP/100 kVAC/2000 VDC	None	APPL400
	3 POLE 250 AMP/100 kVAC/2000 VDC	None	APPL400

AMPACITY AVAILABLE	AMP AVAILABLE	480 VOLT 3-PHASE 3-POLE SWITCHES	CONNECTION KIT PARTNO.
4-1/2 (24 Poles)	100	100	APPL400
	150	150	APPL400
	200	200	APPL400
	250	250	APPL400
	300	300	APPL400
4-1/2 (24 Poles)	400	400	APPL400
	500	500	APPL400
	600	600	APPL400
	700	700	APPL400
	800	800	APPL400
4-1/2 (24 Poles)	1000	1000	APPL400
	1200	1200	APPL400
	1500	1500	APPL400
	2000	2000	APPL400
	2500	2500	APPL400

For Further Information, Contact The Manufacturer Or Distributor. Do Not Exceed The Maximum Ampacity Indicated In This Table. Always Refer To The Manufacturer's Literature For The Most Current Data.

WARNING: Before Working On This Panel, Turn Off All Power To This Panel. Lock Out And Tag Out All Power Sources. Do Not Work On Live Parts. Use Proper Safety Precautions. See The Safety Manual For The Most Current Data.

⚠ DANGER







