

Circuit Breakers Table (Continued)

Cat® Part Number	Frame and Rating (Amps)	IEC/UL	No. Poles	Operation	Trip Unit	Circuit Breaker Characteristics	Options	Instantaneous Override (kA RMS) +/- 10%
3946031	5000A NW-Frame ICCB	IEC	6P	EO	6.0A LSIG	Table 12	4 Aux Contacts, Shunt Trip, UV	170
3946032	5000A NW-Frame ICCB	IEC	6P	EO	6.0P LSIG-P	Table 12	4 Aux Contact, Shunt Trip, Modbus	170
3946033	5000A NW-Frame ICCB	UL	6P	EO	5.0A LSI	Table 8	4 Aux Contacts, Shunt Trip, UV	170
3946034	5000ANW- Frame ICCB	UL	6P	EO	6.0A LSIG	Table 8	4 Aux Contacts, Shunt Trip, UV	170
3946035	5000A NW-Frame ICCB	UL	6P	EO	6.0P LSIG-P	Table 8	4 Aux Contact, Shunt Trip, Modbus	170
4675948	5000A NW-Frame ICCB	UL	6P	EO	5.0P LSI-P	Table 8	4 Aux Contacts, Shunt Trip, UV, Modbus	170

Circuit Breakers Characteristics

<b>Model</b>		P-Frame	
<b>Number of Poles</b>		3	
<b>Rated Current (Amps)</b>		800-2500A (UL)	
<b>Voltage Rating (VAC)</b>		600UL/ 690 IEC	
<b>Interrupt Rating (UL/CSA) (60Hz) - kA RMS</b>		<b>240V</b>	65
		<b>480V</b>	35
		<b>600V</b>	18
<b>IEC 60947-2 Rating (50/60Hz) - kA RMS</b>	<b>I<sub>cu</sub></b>	<b>240V</b>	50
		<b>380/415V</b>	35
	<b>I<sub>cs</sub></b>	<b>240V</b>	25
		<b>380/415V</b>	20

Table 1

<b>Model</b>		NS-Frame MO	
<b>Number of Poles</b>		3 & 4	
<b>Rated Current (Amps)</b>		630-800A (IEC)	
<b>Voltage Rating (VAC)</b>		690 (IEC)	
<b>IEC 60947-2 Rating (50/60Hz) - kA RMS</b>	<b>I<sub>cu</sub></b>	<b>240V</b>	85
		<b>380/415V</b>	50
	<b>I<sub>cs</sub></b>	<b>240V</b>	50
		<b>380/415V</b>	50

Table 2

<b>Model</b>		NS-Frame EO	
<b>Number of Poles</b>		3 & 4	
<b>Rated Current (Amps)</b>		1250-1600A (IEC)	
<b>Voltage Rating (VAC)</b>		690 (IEC)	
<b>IEC 60947-2 Rating (50/60Hz) - kA RMS</b>	<b>I<sub>cu</sub></b>	<b>240V</b>	50
		<b>380/415V</b>	50
	<b>I<sub>cs</sub></b>	<b>240V</b>	37
		<b>380/415V</b>	37

Table 3

<b>Model</b>		NS-Frame MO	
<b>Number of Poles</b>		3 & 4	
<b>Rated Current (Amps)</b>		1600-3200A (IEC)	
<b>Voltage Rating (VAC)</b>		690 (IEC)	
<b>IEC 60947-2 Rating (50/60Hz) - kA RMS</b>	<b>I<sub>cu</sub></b>	<b>240V</b>	85
		<b>380/415V</b>	70
	<b>I<sub>cs</sub></b>	<b>240V</b>	65
		<b>380/415V</b>	52

Table 4

<b>Model</b>		NW-Frame	
<b>Number of Poles</b>		3 & 4	
<b>Rated Current (Amps)</b>		2000A - 4000A (IEC)	
<b>Voltage Rating (VAC)</b>		690 IEC	
<b>IEC 60947-2 Rating (50/60Hz) -kA RMS</b>	<b>240V</b>	65	
	<b>440V</b>	65	
	<b>690V</b>	65	

Table 5

Circuit Breakers Characteristics (Continued)

<b>Model</b>		R-Frame	
<b>Number of Poles</b>		3	
<b>Rated Current (Amps)</b>		1600-3000A (UL)	
<b>Voltage Rating (VAC)</b>		600UL/ 690 IEC	
<b>Interrupt Rating (UL/CSA) (60Hz) - kA RMS</b>		<b>240V</b>	65
		<b>480V</b>	35
		<b>600V</b>	18
<b>IEC 60947-2 Rating (50/60Hz) - kA RMS</b>	<b>I<sub>cu</sub></b>	<b>240V</b>	50
		<b>380/415V</b>	35
	<b>I<sub>cs</sub></b>	<b>240V</b>	25
		<b>380/415V</b>	20

Table 6

<b>Model</b>		R-Frame	
<b>Number of Poles</b>		3	
<b>Rated Current (Amps)</b>		1600-3000A (UL)	
<b>Voltage Rating (VAC)</b>		600UL/ 690 IEC	
<b>Interrupt Rating (UL/CSA) (60Hz) - kA RMS</b>		<b>240V</b>	100
		<b>480V</b>	65
		<b>600V</b>	25
<b>IEC 647-2 Rating (50/60Hz) - kA RMS</b>	<b>I<sub>cu</sub></b>	<b>240V</b>	65
		<b>380/415V</b>	50
	<b>I<sub>cs</sub></b>	<b>240V</b>	35
		<b>380/415V</b>	25

Table 9

<b>Model</b>		NW-Frame	
<b>Number of Poles</b>		3 & 4	
<b>Rated Current (Amps)</b>		1200-2000A (UL)	
<b>Voltage Rating (VAC)</b>		600UL	
<b>Interrupt Rating (UL/CSA) (60Hz) - kA RMS</b>		<b>240V</b>	65
		<b>480V</b>	65
		<b>600V</b>	50

Table 7

<b>Model</b>		L-Frame	
<b>Number of Poles</b>		3	
<b>Rated Current (Amps)</b>		400A (UL)	
<b>Voltage Rating (VAC)</b>		600UL/ 525 IEC	
<b>Interrupt Rating (UL/CSA) (60Hz) - kA RMS</b>		<b>240V</b>	65
		<b>480V</b>	35
		<b>600V</b>	18
<b>IEC 647-2 Rating (50/60Hz) - kA RMS</b>	<b>I<sub>cu</sub></b>	<b>240V</b>	65
		<b>380/415V</b>	35
	<b>I<sub>cs</sub></b>	<b>220V</b>	65
		<b>380/415V</b>	35

Table 10

<b>Model</b>		NW-Frame	
<b>Number of Poles</b>		3 & 4	
<b>Rated Current (Amps)</b>		2500-5000A (UL)	
<b>Voltage Rating (VAC)</b>		600UL	
<b>Interrupt Rating (UL/CSA) (60Hz) - kA RMS</b>		<b>240V</b>	100
		<b>480V</b>	100
		<b>600V</b>	85

Table 8

Circuit Breakers Characteristics (Continued)

<b>Model</b>		L-Frame
<b>Number of Poles</b>		3
<b>Rated Current (Amps)</b>		400A (UL)
<b>Voltage Rating (VAC)</b>		600UL/ 525 IEC
<b>Interrupt Rating (UL/CSA) (60Hz) - kA RMS</b>	<b>240V</b>	200
	<b>480V</b>	200
	<b>600V</b>	100
<b>IEC 647-2 Rating kA RMS</b>	<b>240V</b>	150
	<b>480V</b>	75
	<b>690V</b>	20

Table 11

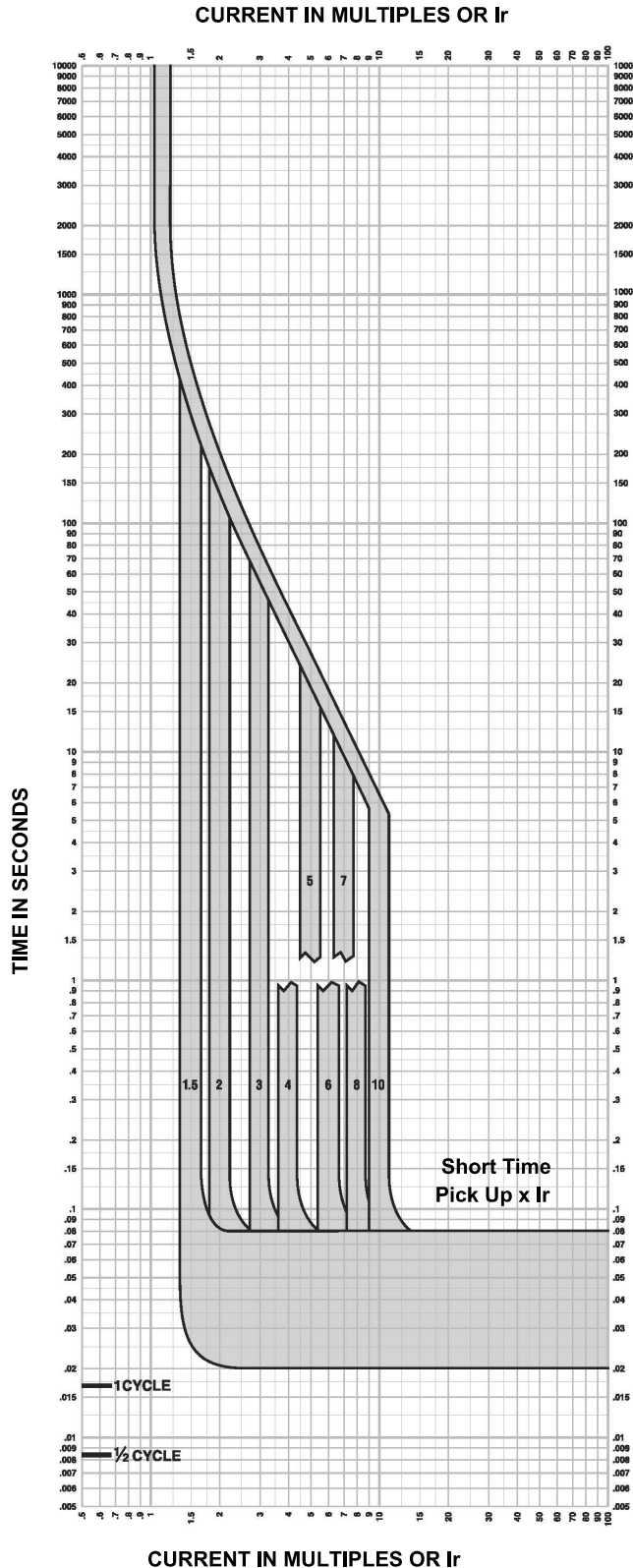
<b>Model</b>		NW-Frame
<b>Number of Poles</b>		3
<b>Rated Current (Amps)</b>		5000A (IEC)
<b>Voltage Rating (VAC)</b>		690 IEC
<b>kAIC</b>	<b>240V</b>	100
	<b>440V</b>	100
	<b>690V</b>	100

Table 12

<b>Model</b>		NW-Frame
<b>Number of Poles</b>		3
<b>Rated Current (Amps)</b>		1600A (IEC)
<b>Voltage Rating (VAC)</b>		690 IEC
<b>kAIC</b>	<b>240V</b>	42
	<b>440V</b>	42
	<b>690V</b>	42

Table 13

## L-Frame Long-Short Trip Curve



### 3.3S Long Time/Short Time Trip Curve 250A, 400A L-Frame

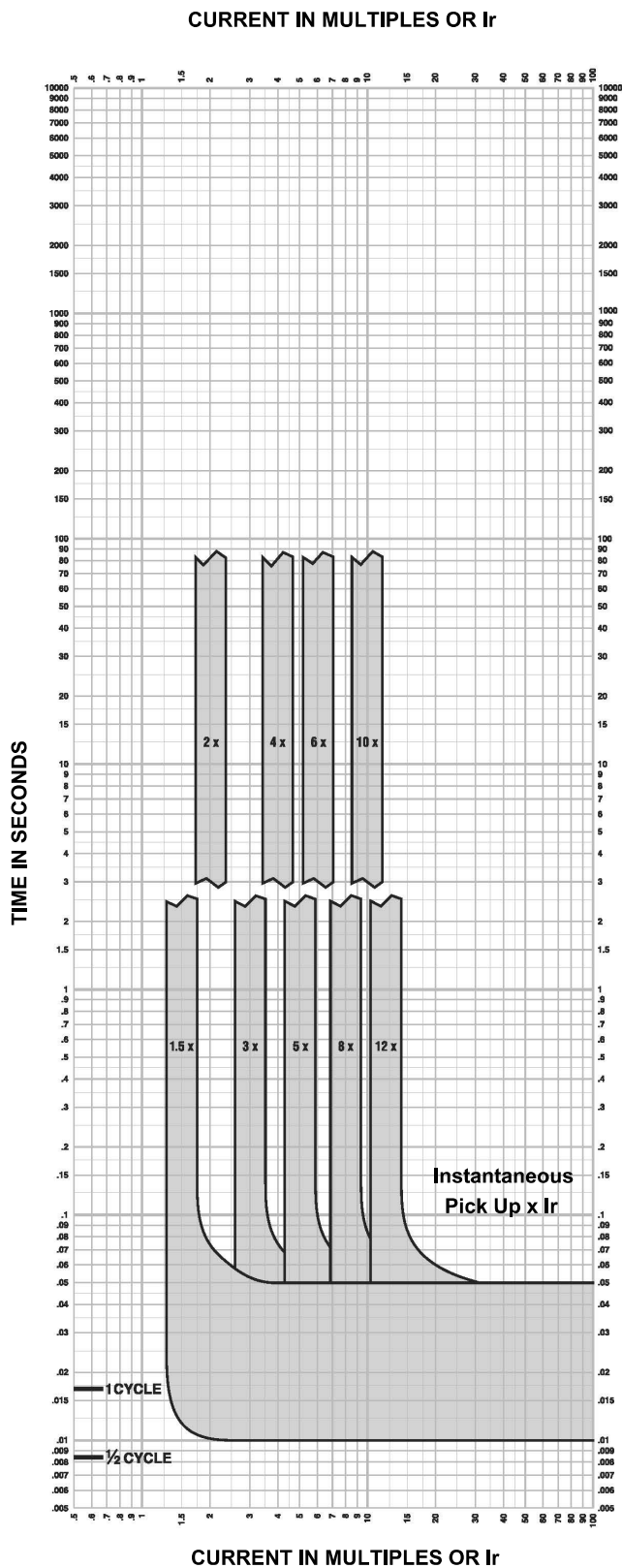
The time-current curve information is to be used for application and coordination purposes only.

Notes:

1. There is a thermal-imaging effect that can act to shorten the long-time delay. The thermal imaging effect comes into play if a current above the long-time delay pickup value exists for a time and then is cleared by the tripping of a downstream device or the circuit breaker itself. A subsequent overload will cause the circuit breaker to trip in a shorter time than normal. The amount of time delay reduction is inverse to the amount of time that has elapsed since the previous overload. Approximately 20 minutes is required between overloads to completely reset thermal-imaging.
2. Total clearing times shown include the response times of the trip unit, the circuit breaker opening, and the extinction of the current.

Curves apply from -35°C to +70°C (-31°F to +158°F) ambient temperature.

## L-Frame Instant Trip Curve



### 3.3/3.3S Instantaneous Trip Curve 250A L-Frame

The time-current curve information is to be used for application and coordination purposes only.

Notes:

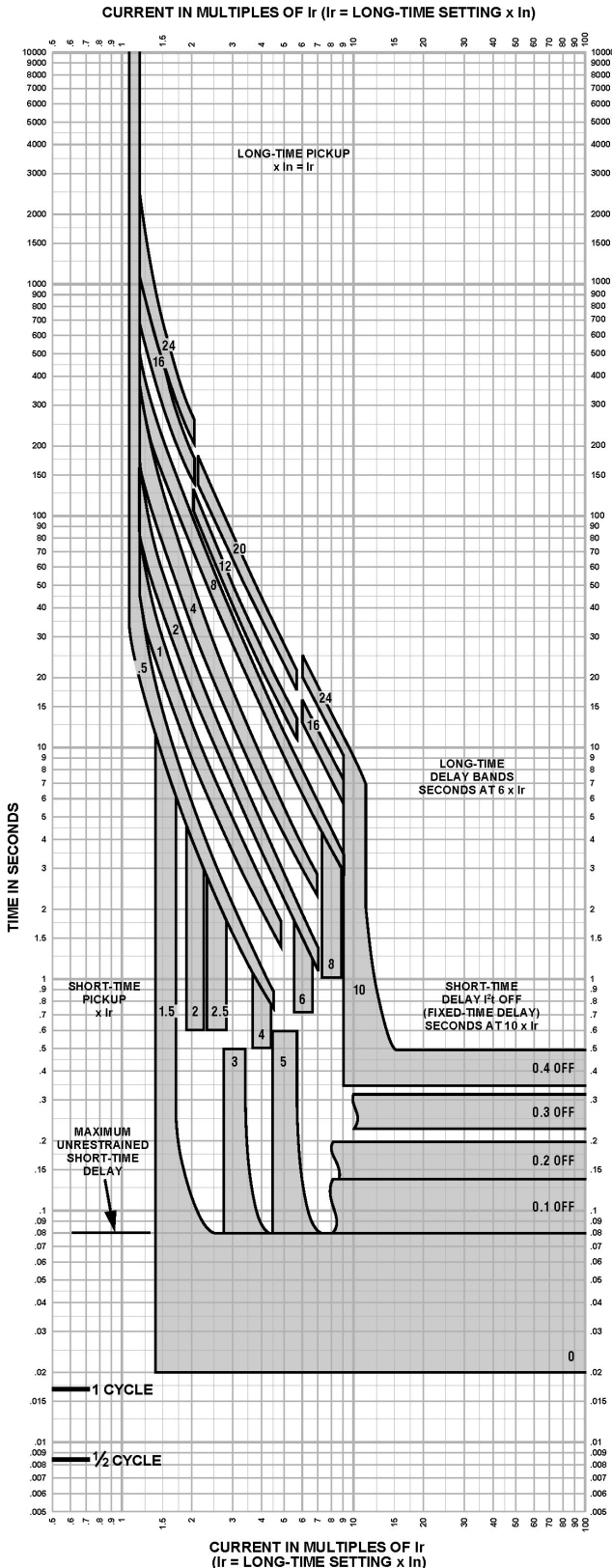
1. There is a thermal-imaging effect that can act to shorten the long-time delay. The thermal imaging effect comes into play if a current above the long-time delay pickup value exists for a time and then is cleared by the tripping of a downstream device or the circuit breaker itself. A subsequent overload will cause the circuit breaker to trip in a shorter time than normal. The amount of time delay reduction is inverse to the amount of time that has elapsed since the previous overload.

Approximately 20 minutes is required between overloads to completely reset thermal-imaging.

2. Total clearing times shown include the response times of the trip unit, the circuit breaker opening, and the extinction of the current.

3.  $I_n$  = Maximum dial setting of  $I_r$ . 250A L-Frame:  
 $I_n = 250A = \text{Max } I_r$  setting Curves apply from  $-35^\circ\text{C}$  to  $+70^\circ\text{C}$  ( $-31^\circ\text{F}$  to  $+158^\circ\text{F}$ ) ambient temperature.

P, R, NS-Frame Long-Short Trip Curve and NW-Frame Long-Short Trip Curve



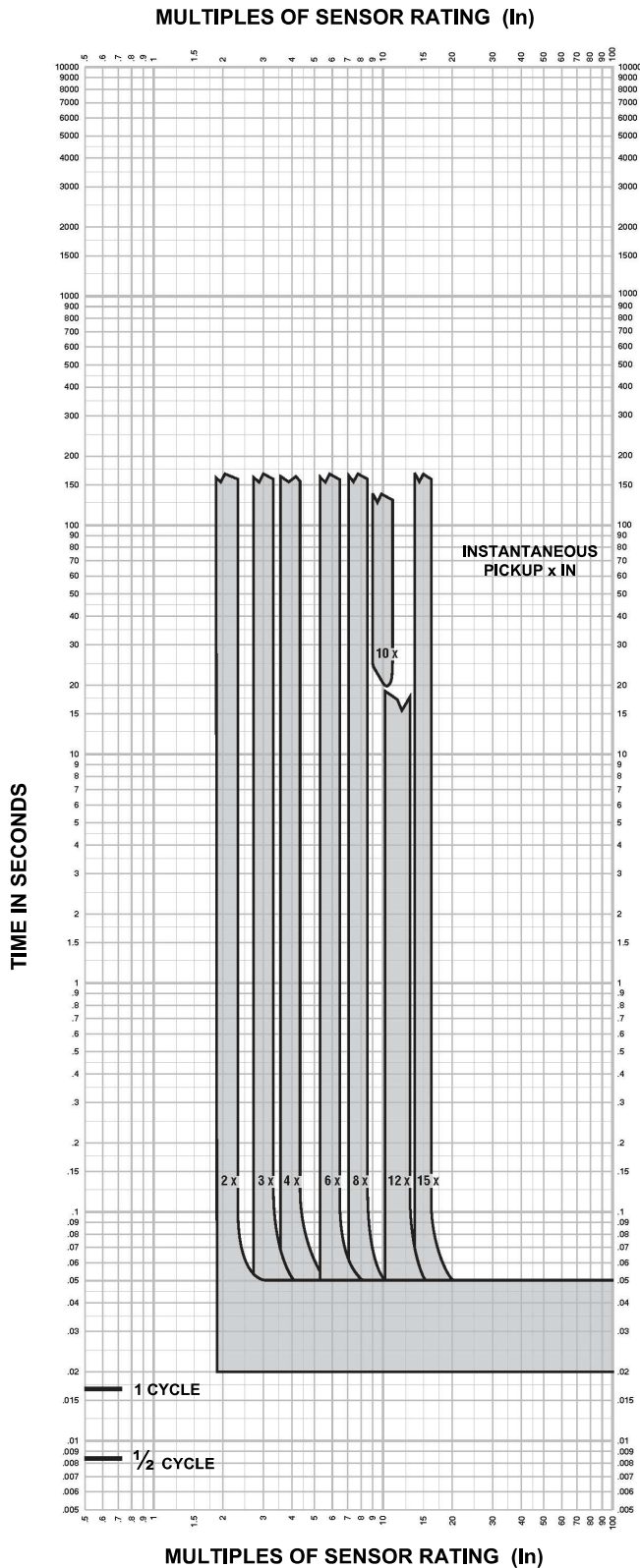
Long-time Pickup and Delay Short-time Pickup and I<sup>2</sup>t OFF Delay

The time-current curve information is to be used for application and coordination purposes only. Curves apply from -30°C to +60°C ambient temperature.

Notes:

1. There is a thermal-imaging effect that can act to shorten the long-time delay. The thermalimaging effect comes into play if a current above the long-time delay pickup value exists for a time and then is cleared by the tripping of a downstream device or the circuit breaker itself. A subsequent overload will cause the circuit breaker to trip in a shorter time than normal. The amount of time delay reduction is inverse to the amount of time that has elapsed since the previous overload. Approximately 20 minutes is required between overloads to completely reset thermal-imaging.
2. The end of the curve is determined by the interrupting rating of the circuit breaker.
3. With zone-selective interlocking on, short-time delay utilized and no restraining signal, the maximum unrestrained short-time delay time band applies regardless of the setting.
4. Total clearing times shown include the response times of the trip unit, the circuit breaker opening, and the extinction of the current.
5. For a withstand circuit breaker, instantaneous can be turned OFF. See Page 22 for instantaneous trip curve. See tables on pages 03-18 for instantaneous override values..
6. Overload indicator illuminates at 100%.

## P, R, NS-Frame Instant Curve and NW-Frame Instant Trip Curve



### Instantaneous Pickup 2x–15x and OFF

The time-current curve information is to be used for application and coordination purposes only.

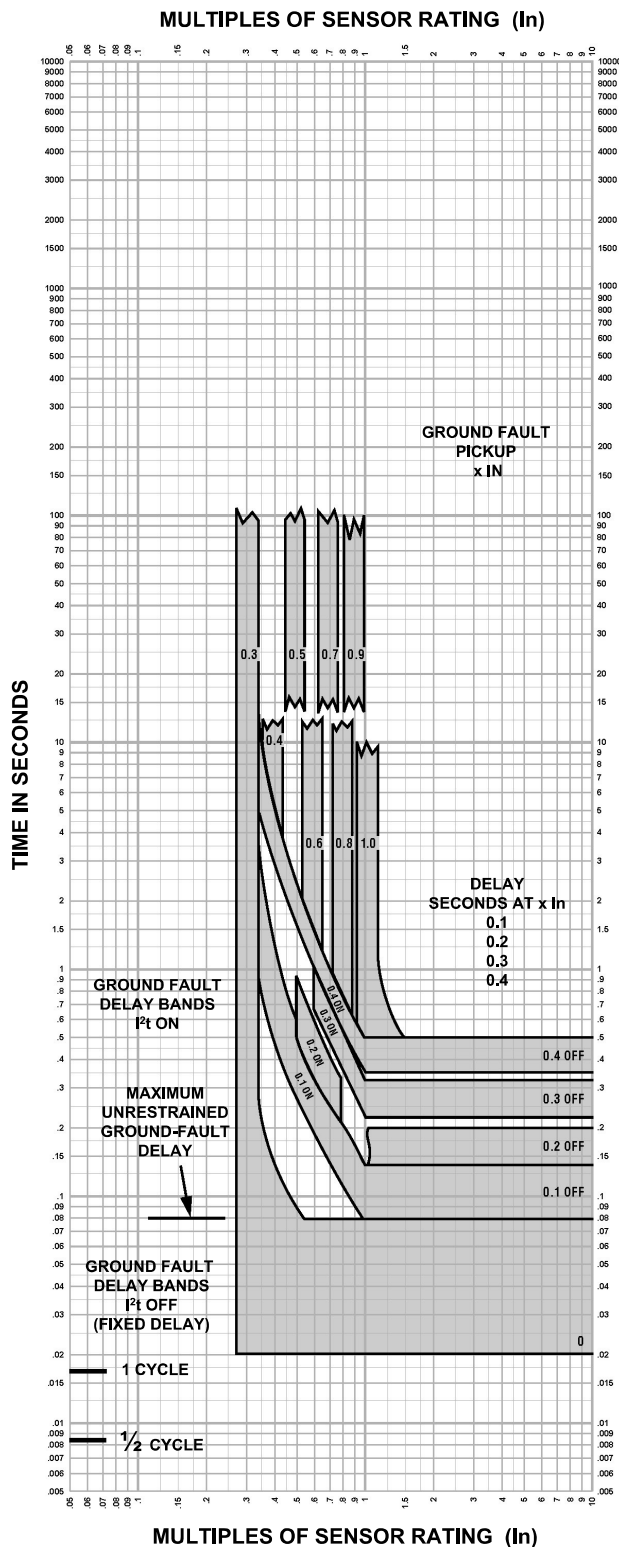
Curves apply from -30° to +60°C ambient temperature.

Notes:

1. The end of the curve is determined by the interrupting rating of the circuit breaker.
2. Total clearing times shown include the response times of the trip unit, the circuit breaker opening, and the extinction of the current.
3. The instantaneous region of the trip curve shows maximum total clearing times. Actual clearing times in this region can vary depending on the circuit breaker mechanism design and other factors. The actual clearing time can be considerably faster than indicated. Contact your local Sales Office for additional information.
4. For a withstand circuit breaker, instantaneous can be turned OFF. See tables on pages 03-18 for instantaneous override values.
5. See page 22 for long-time pickup, long-time delay, short-time pickup, and short time delay trip curves.



## P, R, NS-Frame Ground Curve and NW-Frame Ground Fault Trip Curve



### Ground-fault I²t OFF and ON In ≤ 400 A

The time-current curve information is to be used for application and coordination purposes only.

Curves apply from -30°C to +60°C ambient temperature.

Materials and specifications are subject to change without notice.

CAT, CATERPILLAR, LET'S DO THE WORK, their respective logos, "Caterpillar Corporate Yellow", the "Power Edge" and Cat "Modern Hex" trade dress as well as corporate and product identity used herein, are trademarks of Caterpillar and may not be used without permission.

Effective with sales to the first user on or after August 1, 2016

# CATERPILLAR LIMITED WARRANTY

## Industrial, Petroleum, Locomotive, and Agriculture Engine Products and Electric Power Generation Products

Caterpillar Inc. or any of its subsidiaries ("Caterpillar") warrants new and remanufactured engines and new and rebuild electric power generation products sold by it (including any products of other manufacturers packaged and sold by Caterpillar), to be free from defects in material and workmanship.

This warranty does not apply to engines sold for use in on-highway vehicle or marine applications; engines in machines manufactured by or for Caterpillar; C175, 3500 and 3600 series engines used in locomotive applications; 3000 Family engines, C0.5 through C4.4 and ACERT™ (C6.6, C7, C7.1, C9, C9.3, C11, C13, C15, C18, C27, and C32) engines used in industrial, mobile agriculture and locomotive applications; or Cat<sup>®</sup> batteries, or Electric Power Generation Products manufactured or assembled in India. These products are covered by other Caterpillar warranties.

This warranty is subject to the following:

### Warranty Period

- For industrial engines, engines in a petroleum applications or Petroleum Power Systems (excluding petroleum fire pump application), or engines in a Locomotive application, or Uninterruptible Power Supply (UPS) systems, the warranty period is 12 months after date of delivery to the first user.
- For engines used in petroleum fire pump and mobile agriculture applications the warranty period is 24 months after date of delivery to the first user.
- For controls only (EPIC), configurable and custom switchgear products, and automatic transfer switch products, the warranty period is 24 months after date of delivery to the first user.
- For new CG132, CG170 and CG260 series power generation products the warranty period is 24 months/16,000 hours, whichever comes first, after date of delivery to first user.
- For electric power generation products other than CG132, CG170 and CG260 series in prime or continuous applications the warranty period is 12 months. **For standby applications the warranty period is 24 months/1000 hours.** For emergency standby applications the warranty period is 24 months/400 hours. All terms begin after date of delivery to the first user.
- For Caterpillar rebuild electric power generation products the warranty period is 12 months, but not to exceed 24 months from shipment of rebuilt electric power generation product from Caterpillar.
- For all other applications the warranty period is 12 months after date of delivery to the first user.

### Caterpillar Responsibilities

If a defect in material or workmanship is found during the warranty period, Caterpillar will, during normal working hours and at a place of business of a Cat dealer or other source approved by Caterpillar:

- Provide (at Caterpillar's choice) new, Remanufactured, or Caterpillar approved repaired parts or assembled components needed to correct the defect.

**Note:** New, remanufactured, or Caterpillar approved repaired parts or assembled components provided under the terms of this warranty are warranted for the remainder of the warranty period applicable to the product in which installed as if such parts were original components of that product. Items replaced under this warranty become the property of Caterpillar.

- Replace lubricating oil, filters, coolant, and other service items made unusable by the defect.
- Provide reasonable and customary labor needed to correct the defect, including labor to disconnect the product from and reconnect the product to its attached equipment, mounting, and support systems, if required.

For new 3114, 3116, and 3126 engines and, new and Caterpillar rebuild electric power generation products (which includes the following: any new products of other manufacturers packaged and sold by Caterpillar)

- Provide travel labor, up to four hours round trip, in the opinion of Caterpillar, the product cannot reasonably be transported to a place of business of a Cat dealer or other source approved by Caterpillar (travel labor in excess of four hours round trip, and any meals, mileage, lodging, etc. is the user's responsibility).

For all other products:

- Provide reasonable travel expenses for authorized mechanics, including meals, mileage, and lodging, when Caterpillar chooses to make the repair on-site.

### User Responsibilities

The user is responsible for:

- Providing proof of the delivery date to the first user.
- Labor costs, except as stated under "Caterpillar Responsibilities," including costs beyond those required to disconnect the product from and reconnect the product to its attached equipment, mounting, and support systems.

- Travel or transporting costs, except as stated under "Caterpillar Responsibilities."
- Premium or overtime labor costs.
- Parts shipping charges in excess of those that are usual and customary.
- Local taxes, if applicable.

Costs to investigate complaints, unless the problem is caused by a defect in Caterpillar material or workmanship.

- Giving timely notice of a warrantable failure and promptly making the product available for repair.

Performance of the required maintenance (including use of proper fuel, oil, lubricants, and coolant) and items replaced due to normal wear and tear.

- Allowing Caterpillar access to all electronically stored data.

### Limitations

Caterpillar is not responsible for:

- Failures resulting from any use or installation that Caterpillar judges improper.
- Failures resulting from attachments, accessory items, and parts not sold or approved by Caterpillar.
- Failures resulting from abuse, neglect, and/or improper repair.
- Failures resulting from user's delay in making the product available after being notified of a potential product problem.
- Failures resulting from unauthorized repairs or adjustments, and unauthorized fuel setting changes.
- Damage to parts, fixtures, housings, attachments, and accessory items that are not part of the engine, Cat Selective Catalytic Reduction System or electric power generation product (including any products of other manufacturers packaged and sold by Caterpillar).

Repair of components sold by Caterpillar that is warranted directly to the user by their respective manufacturer. Depending on type of application, certain exclusions may apply. Consult your Cat dealer for more information.

(Continued on reverse side...)

This warranty covers every major component of the products. Claims under this warranty should be submitted to a place of business of a Cat dealer or other source approved by Caterpillar. For further information concerning either the location to submit claims or Caterpillar as the issuer of this warranty, write Caterpillar Inc., 100 N. E. Adams St., Peoria, IL USA 61629.

Caterpillar's obligations under this Limited Warranty are subject to, and shall not apply in contravention of, the laws, rules, regulations, directives, ordinances, orders, or statutes of the United States, or of any other applicable jurisdiction, without recourse or liability with respect to Caterpillar.

*A) For products operating outside of Australia, Fiji, Nauru, New Caledonia, New Zealand, Papua New Guinea, the Solomon Islands and Tahiti, the following is applicable:*

**NEITHER THE FOREGOING EXPRESS WARRANTY NOR ANY OTHER WARRANTY BY CATERPILLAR, EXPRESS OR IMPLIED, IS APPLICABLE TO ANY ITEM CATERPILLAR SELLS THAT IS WARRANTED DIRECTLY TO THE USER BY ITS MANUFACTURER.**

**THIS WARRANTY IS EXPRESSLY IN LIEU OF ANY OTHER WARRANTIES, EXPRESS OR IMPLIED, INCLUDING ANY WARRANTY OF MERCHANTABILITY OR FITNESS FOR A PARTICULAR PURPOSE, EXCEPT CATERPILLAR EMISSION-RELATED COMPONENTS WARRANTIES FOR NEW ENGINES, WHERE APPLICABLE. REMEDIES UNDER THIS WARRANTY ARE LIMITED TO THE PROVISION OF MATERIAL AND SERVICES, AS SPECIFIED HEREIN.**

**CATERPILLAR IS NOT RESPONSIBLE FOR INCIDENTAL OR CONSEQUENTIAL DAMAGES.**

**CATERPILLAR EXCLUDES ALL LIABILITY FOR OR ARISING FROM ANY NEGLIGENCE ON ITS PART OR ON THE PART OF ANY OF ITS EMPLOYEES, AGENTS OR REPRESENTATIVES IN RESPECT OF THE MANUFACTURE OR SUPPLY OF GOODS OR THE PROVISION OF SERVICES RELATING TO THE GOODS.**

**IF OTHERWISE APPLICABLE, THE VIENNA CONVENTION ON CONTRACTS FOR THE INTERNATIONAL SALE OF GOODS IS EXCLUDED IN ITS ENTIRETY.**

For personal or family use engines or electric power generation products, operating in the USA, its territories and possessions, some states do not allow limitations on how long an implied warranty may last nor allow the exclusion or limitation of incidental or consequential damages. Therefore, the previously expressed exclusion may not apply to you. This warranty gives you specific legal rights and you may also have other rights, which vary by jurisdiction. To find the location of the nearest Cat dealer or other authorized repair facility, call (800) 447-4986. If you have questions concerning this warranty or its applications, call or write:

In USA and Canada: Caterpillar Inc., Engine Division, P. O. Box 610, Mossville, IL 61552-0610, Attention: Customer Service Manager, Telephone (800) 447-4986. Outside the USA and Canada: Contact your Cat dealer.

*B) For products operating in Australia, Fiji, Nauru, New Caledonia, New Zealand, Papua New Guinea, the Solomon Islands and Tahiti, the following is applicable:*

**THIS WARRANTY IS IN ADDITION TO WARRANTIES AND CONDITIONS IMPLIED BY STATUTE AND OTHER STATUTORY RIGHTS AND OBLIGATIONS THAT BY ANY APPLICABLE LAW CANNOT BE EXCLUDED, RESTRICTED OR MODIFIED ("MANDATORY RIGHTS"). ALL OTHER WARRANTIES OR CONDITIONS, EXPRESS OR IMPLIED (BY STATUTE OR OTHERWISE), ARE EXCLUDED, WITHOUT LIMITING THE FOREGOING PROVISIONS OF THIS PARAGRAPH, WHERE A PRODUCT IS SUPPLIED FOR BUSINESS PURPOSES, THE CONSUMER GUARANTEES UNDER THE CONSUMER GUARANTEES ACT 1993 (NZ) WILL NOT APPLY.**

**NEITHER THIS WARRANTY NOR ANY OTHER CONDITION OR WARRANTY BY CATERPILLAR, EXPRESS OR IMPLIED (SUBJECT ONLY TO THE MANDATORY RIGHTS), IS APPLICABLE TO ANY ITEM CATERPILLAR SELLS THAT IS WARRANTED DIRECTLY TO THE USER BY ITS MANUFACTURER.**

**IF THE MANDATORY RIGHTS MAKE CATERPILLAR LIABLE IN CONNECTION WITH SERVICES OR GOODS, THEN TO THE EXTENT PERMITTED UNDER THE MANDATORY RIGHTS, THAT LIABILITY SHALL BE LIMITED AT CATERPILLAR'S OPTION TO (a) IN THE CASE OF SERVICES, THE SUPPLY OF THE SERVICES AGAIN OR THE PAYMENT OF THE COST OF HAVING THE SERVICES SUPPLIED AGAIN AND (b) IN THE CASE OF GOODS, THE REPAIR OR REPLACEMENT OF THE GOODS, THE SUPPLY OF EQUIVALENT GOODS, THE PAYMENT OF THE COST OF SUCH REPAIR OR REPLACEMENT OR THE ACQUISITION OF EQUIVALENT GOODS.**

**CATERPILLAR EXCLUDES ALL LIABILITY FOR OR ARISING FROM ANY NEGLIGENCE ON ITS PART OR ON THE PART OF ANY OF ITS EMPLOYEES, AGENTS OR REPRESENTATIVES IN RESPECT OF THE MANUFACTURE OR SUPPLY OF GOODS OR THE PROVISION OF SERVICES RELATING TO THE GOODS.**

**CATERPILLAR IS NOT LIABLE FOR INCIDENTAL OR CONSEQUENTIAL DAMAGES UNLESS IMPOSED UNDER MANDATORY RIGHTS.**

**IF OTHERWISE APPLICABLE, THE VIENNA CONVENTION ON CONTRACTS FOR THE INTERNATIONAL SALE OF GOODS IS EXCLUDED IN ITS ENTIRETY.**

*C) For products supplied in Australia:*

**IF THE PRODUCTS TO WHICH THIS WARRANTY APPLIES ARE:**

**I. PRODUCTS OF A KIND ORDINARILY ACQUIRED FOR PERSONAL, DOMESTIC OR HOUSEHOLD USE OR CONSUMPTION; OR**

**II. PRODUCTS THAT COST AUD 40,000 OR LESS,**

**WHERE THOSE PRODUCTS WERE NOT ACQUIRED FOR THE PURPOSE OF RE-SUPPLY OR FOR THE PURPOSE OF USING THEM UP OR TRANSFORMING THEM IN THE COURSE OF PRODUCTION OR MANUFACTURE OR IN THE COURSE OF REPAIRING OTHER GOODS OR FIXTURES, THEN THIS SECTION C APPLIES.**

**THE FOLLOWING MANDATORY TEXT IS INCLUDED PURSUANT TO THE AUSTRALIAN CONSUMER LAW AND INCLUDES REFERENCES TO RIGHTS THE USER MAY HAVE AGAINST THE DIRECT SUPPLIER OF THE PRODUCTS: OUR GOODS COME WITH GUARANTEES THAT CANNOT BE EXCLUDED UNDER THE AUSTRALIAN CONSUMER LAW. YOU ARE ENTITLED TO A REPLACEMENT OR REFUND FOR A MAJOR FAILURE AND COMPENSATION FOR ANY OTHER REASONABLY FORESEEABLE LOSS OR DAMAGE. YOU ARE ALSO ENTITLED TO HAVE THE GOODS REPAIRED OR REPLACED IF THE GOODS FAIL TO BE OF ACCEPTABLE QUALITY AND THE FAILURE DOES NOT AMOUNT TO A MAJOR FAILURE. THE INCLUSION OF THIS TEXT DOES NOT CONSTITUTE ANY REPRESENTATION OR ACCEPTANCE BY CATERPILLAR OF LIABILITY TO THE USER OR ANY OTHER PERSON IN ADDITION TO THAT WHICH CATERPILLAR MAY HAVE UNDER THE AUSTRALIAN CONSUMER LAW.**

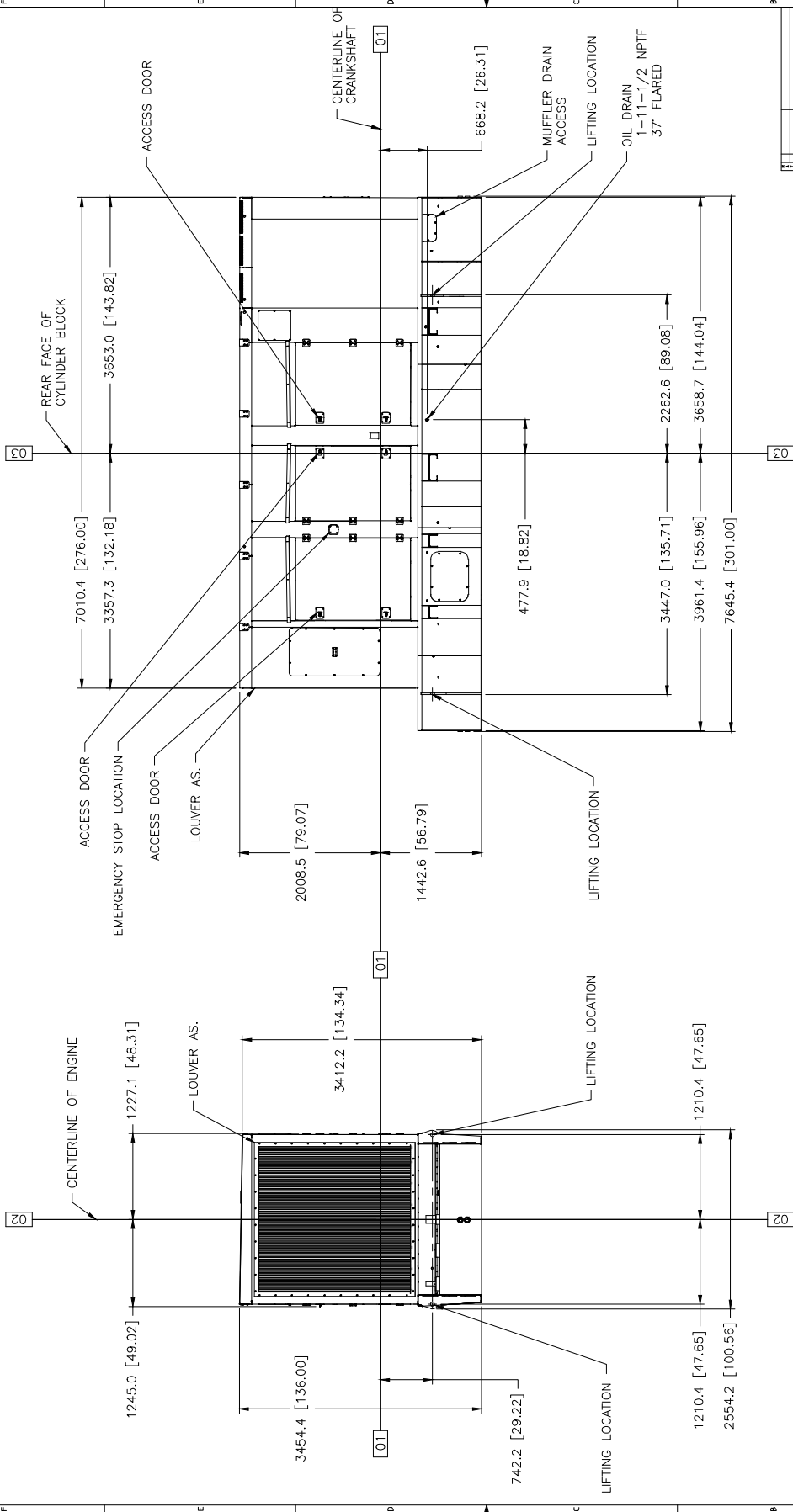
**TO THE EXTENT THE PRODUCTS FALL WITHIN THIS SECTION C BUT ARE NOT OF A KIND ORDINARILY ACQUIRED FOR PERSONAL, DOMESTIC OR HOUSEHOLD USE OR CONSUMPTION, CATERPILLAR LIMITS ITS LIABILITY TO THE EXTENT IT IS PERMITTED TO DO SO UNDER THE AUSTRALIAN CONSUMER LAW TO, AT ITS OPTION, THE REPAIR OR REPLACEMENT OF THE PRODUCTS, THE SUPPLY OF EQUIVALENT PRODUCTS, OR THE PAYMENT OF THE COST OF SUCH REPAIR OR REPLACEMENT OR THE ACQUISITION OF EQUIVALENT PRODUCTS.**

**THE WARRANTY SET OUT IN THIS DOCUMENT IS GIVEN BY CATERPILLAR INC. OR ANY OF ITS SUBSIDIARIES, 100 N. E. ADAMS ST, PEORIA, IL USA 61629, TELEPHONE 1 309 675 1000, THE USER IS RESPONSIBLE FOR ALL COSTS ASSOCIATED WITH MAKING A CLAIM UNDER THE WARRANTY SET OUT IN THIS DOCUMENT, EXCEPT AS EXPRESSLY STATED OTHERWISE IN THIS DOCUMENT, AND THE USER IS REFERRED TO THE BALANCE OF THE DOCUMENT TERMS CONCERNING CLAIM PROCEDURES, CATERPILLAR RESPONSIBILITIES AND USER RESPONSIBILITIES.**

**TO THE EXTENT PERMISSIBLE BY LAW, THE TERMS SET OUT IN THE REMAINDER OF THIS WARRANTY DOCUMENT (INCLUDING SECTION B) CONTINUE TO APPLY TO PRODUCTS TO WHICH THIS SECTION C APPLIES.**

©2016 Caterpillar All Rights Reserved.

CAT, CATERPILLAR, their respective logos, "Caterpillar Yellow", the "Power Edge" trade dress as well as corporate and product identity used herein, are trademarks of Caterpillar and may not be used without permission.



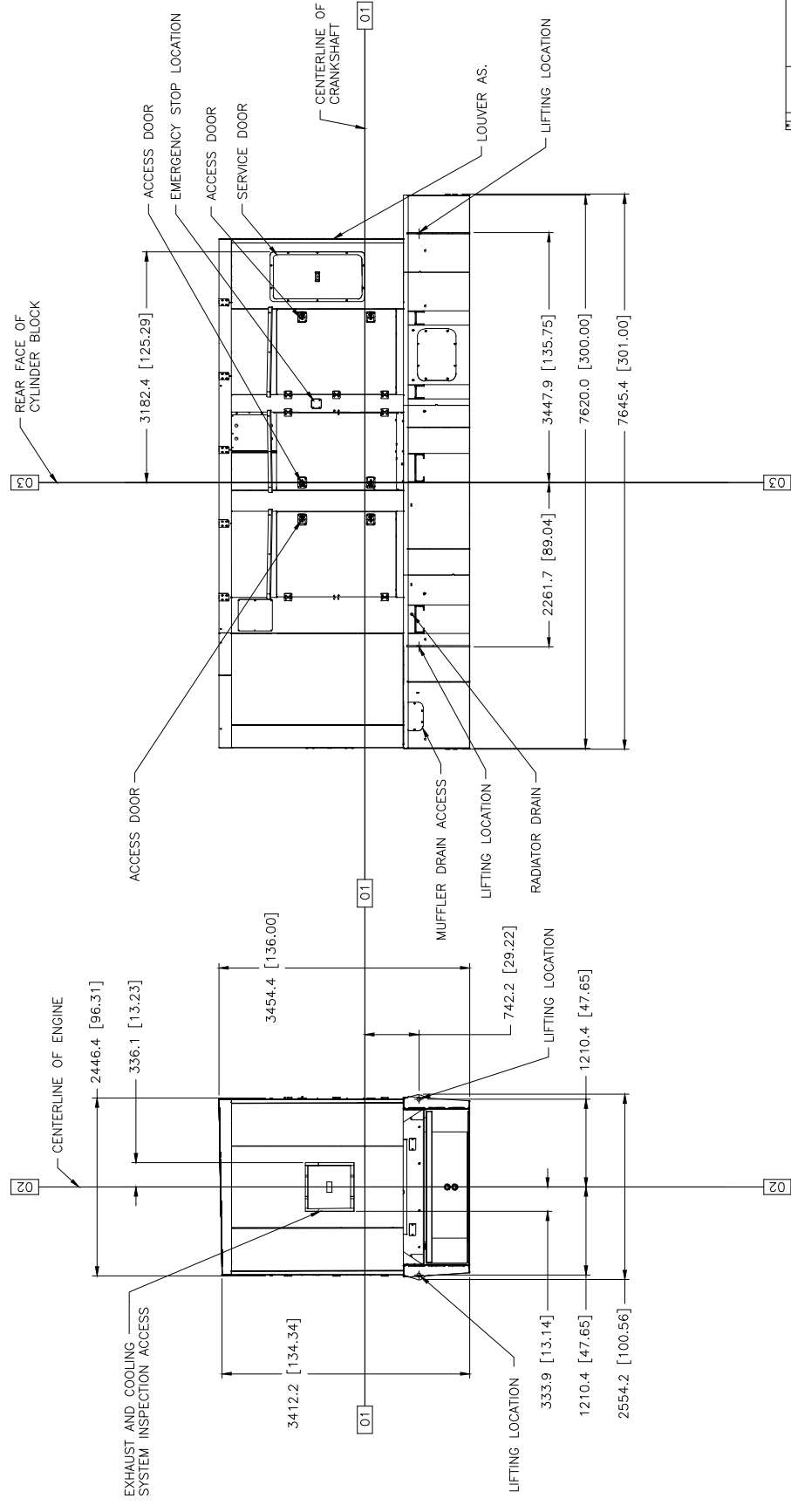
REAR VIEW

RIGHT SIDE VIEW

MODEL	TYPE	PRICING AR
C32	-	LS-1222 CHG 03
C27	-	LS-1233 CHG 01
C27	-	LS-1236 CHG 01

LS-1222 V12 ENCLOSURE W/2000 GAL FUEL BASE SHOWN

1122743 DRAWING-AUTOCAD	
DATE	01/11/00
DESIGNER	J. THORMAN
DRAWN BY	J. THORMAN
CHECKED BY	J. THORMAN
DATE	01/11/00
SCALE	1:1
SAFETYVILLE INC.	
SAFETYVILLE INC. 2100 W. 12TH ST. SUITE 100	
MINNEAPOLIS, MN 55405	
TEL: 612-833-3333 FAX: 612-833-3334	
WWW.SAFETYVILLE.COM	
DRAWING NO. 1122743	
ENCLOSURE V12	
436-1390	



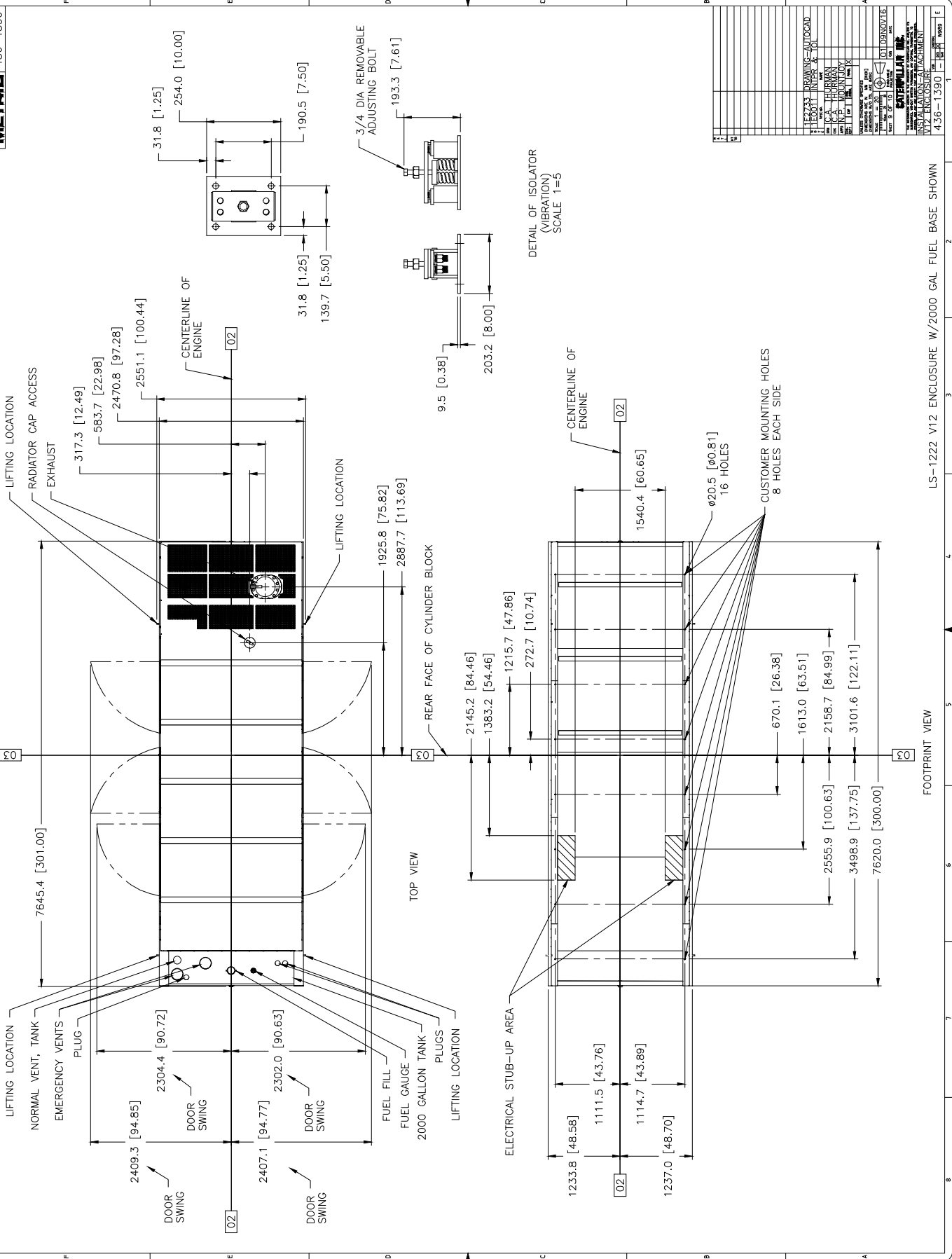
LEFT SIDE VIEW

FRONT VIEW

1	2	3	4	5	6	7	8
9	10	11	12	13	14	15	16
17	18	19	20	21	22	23	24
25	26	27	28	29	30	31	32
33	34	35	36	37	38	39	40
41	42	43	44	45	46	47	48
49	50	51	52	53	54	55	56
57	58	59	60	61	62	63	64
65	66	67	68	69	70	71	72

DRAWING - AUTOCAD	
SCALE: 1:1	
DATE	10/18/2015
DRAWN BY	...
CHECKED BY	...
APPROVED BY	...
SATAPILLAR INC.	
1000 WILSON ROAD, SUITE 100	
VANCOUVER, BC V6P 4K1 CANADA	
TEL: 604 681 1111	
FAX: 604 681 1112	
WWW.SATAPILLAR.COM	
LS-1222 V12 ENCLOSURE W/2000 GAL FUEL BASE SHOWN	
436-1390	1

LS-1222 V12 ENCLOSURE W/2000 GAL FUEL BASE SHOWN



1	112223	DRAWING-AUTOCAD	
2	112223	112223	112223
3	112223	112223	112223
4	112223	112223	112223
5	112223	112223	112223
6	112223	112223	112223
7	112223	112223	112223
8	112223	112223	112223
9	112223	112223	112223
10	112223	112223	112223
11	112223	112223	112223
12	112223	112223	112223
13	112223	112223	112223
14	112223	112223	112223
15	112223	112223	112223
16	112223	112223	112223
17	112223	112223	112223
18	112223	112223	112223
19	112223	112223	112223
20	112223	112223	112223

LS-1222 V12 ENCLOSURE W/2000 GAL FUEL BASE SHOWN

FOOTPRINT VIEW

SCALE 1=5