



MAKE POWER MOVES.



Mobile Generators
25 kVA — 570 kVA

DOOSAN[®]

Portable Power

Table of Contents

About Us	1
Powerful Solutions	2
Diesel Generators	
G25 - G70	3-4
• G25	
• G40	
• G50	
• G70	
G125 - G150	5-6
• G125	
• G150	
G190 - G570	7-8
• G190	
• G240	
• G325	
• G400	
• G570	
Intelligent Load Management System	9
Paralleling and Power Management	9
Specifications	10-12
Doosan Portable Power Full Line Overview	13-14



DOOSAN®

Portable Power

About Us

Doosan Portable Power has more than 100 years of manufacturing expertise and application experience, with a focus on providing the highest quality machines with unrivaled customer service. Our market leading product line of portable air compressors, mobile generators and light towers are proudly built in the USA. Doosan Portable Power is headquartered in Statesville, North Carolina, and was established in 2007 when Doosan Infracore purchased Ingersoll-Rand's Utility Equipment division.

Today, Doosan Portable Power is a subsidiary of Doosan Bobcat Inc. Doosan Bobcat is an industry leader in the engineering, manufacturing and marketing of construction equipment, and also represents the Bobcat brand. Doosan Bobcat is committed to delivering innovative products and services that provide quality and value.





Powerful Solutions

At Doosan Portable Power, we do more than provide superior products. We deliver powerful solutions to move your business forward. Robust portable air compressors that perform on the most demanding job sites. Mobile generators and light towers that are reliable and efficient. Factor in our industry-leading service and support, and it's quite clear that partnering with us is a smart return on your investment.

Dependability

Our equipment is built to last with corrosion-resistant galvanized steel enclosures and a durable, baked-on powder coat finish. Extensive testing at our Statesville, North Carolina facility includes a test track, tilt table, and cold chamber to ensure our machines will perform in the harshest conditions and applications.

Doosan is fully committed to delivering quality machines that maximize uptime and productivity to give you peace of mind.

*“The quality is a 10.
The durability is a 10.”*

-Jack Anderson, Pape Material Handling

Performance

Doosan Portable Power gives you the power you need in the most efficient manner. We provide leading fuel economy and performance while ensuring compliance with the latest emissions standards.

Doosan also offers unmatched versatility to support almost every job or application. And with user friendly controls and diagnostics, anyone can operate our equipment with minimal instruction.

“Doosan has always performed well for us.”

-Mark Grimes, Industrial Marine

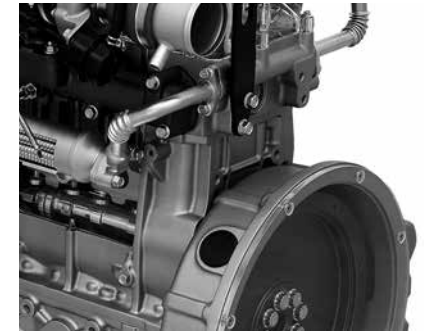
Serviceability

Doosan has an extensive and knowledgeable dealer network. Our dealer-partners have a deep understanding of your business and can provide the solutions you demand.

All of our products are engineered and designed with an emphasis on accessibility to make sure routine maintenance is quick and easy to perform without having to take the machine apart.

“Parts and service are always there when we need it.”

- Mike Venuti, Meruelo Group



LOW MAINTENANCE

The high performance Doosan engine features a diesel oxidation catalyst (DOC) aftertreatment system, which is virtually maintenance-free.



VERSATILITY

Standard units feature multi-voltage and 50/60Hz capability to meet a broad range of applications.

G25

Full specifications on page 11



PRIME POWER RATING 25 kVA | 20 kW

G40

Full specifications on page 11



PRIME POWER RATING 39 kVA | 31 kW

G50

Full specifications on page 11



PRIME POWER RATING 48 kVA | 38 kW

G70

Full specifications on page 11



PRIME POWER RATING 70 kVA | 56 kW

G25-G70 Generators

When you need reliable, dependable power, look to Doosan Portable Power. Our mobile generator range covers applications from 25 to 400 kVA and meets the demanding requirements of rental, construction, events and entertainment, and disaster recovery customers. These rugged packages are designed to perform in the harshest environments—from the frozen oil fields of northern Canada to the scorching desert of the American southwest—you can be confident that your generator has the quality and durability to meet the demands of the most challenging applications.

The G25-70 range is powered by fuel efficient Doosan diesel engines. These state-of-the-art engines have been designed to be powerful and reliable while meeting EPA tier 4 emissions standards without the need for diesel particulate filters. In addition, these high-performance engines provide excellent transient response ensuring precision frequency stability.

The durable CoolBox™ enclosure is acoustically treated to minimize sound levels as low as 63dB(A) while ensuring proper cooling airflow through the package to operate at maximum load in high ambient temperatures.

Doosan mobile generators feature skid baseframes with integrated high capacity fuel tanks which provide a full load runtime of at least 24 hours. In addition, the baseframe is part of the environmental containment system that prevents spillage of fuel or oil outside of the package, safeguarding the environment.

And our heavy-duty running gear system mounts easily to the baseframe with low profile, torsion-style axles with your choice or electric or hydraulic surge brakes, bolt-on fenders, and adjustable height hitches to ensure safe and easy towing—on-road or off.

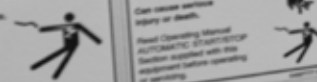
DoosanPortablePower.com



⚡ WARNING
Risk of electric shock.
Respect voltage.
Can cause serious injury or death.

⚡ WARNING
Machine can START AUTOMATICALLY.
Can cause serious injury or death.

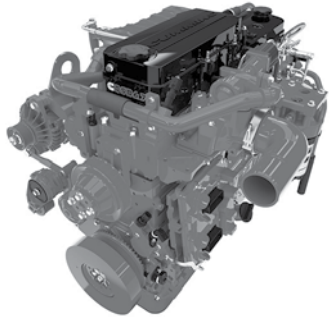
Read Operating Manual
AUTOMATIC STARTER/STOPPER function operates with the equipment before starting or restarting.





AT-A-GLANCE

The easy-to-use operator panel includes the powerful TG410 controller and is complemented by a full array of analog gauges, greatly simplifying control and monitoring.



DURABILITY

The G125-570 range is powered by Cummins diesel engines which meet tier 4 regulations while ensuring reliable performance and reduced maintenance.

G125

Full specifications on page 11



PRIME POWER RATING 125 kVA | 100 kW

G125 & G150 Generators

The G125-150 models include the upgraded CoolBox Plus™ enclosure design which adds a temperature-controlled, variable-speed cooling fan to the package. This allows enhanced performance in extreme ambient temperatures while further improving sound attenuation and reducing water ingress across the operating range.

Doosan mobile generators produce a broad range of output voltages thanks to the standard three-position voltage selector switch or link board panel. The voltage change feature is protected from unauthorized access and will shut the machine down to prevent switching during operation. The customer connection panel is spacious and designed to accept a wide variety of power cables. The convenience

G150

Full specifications on page 11



PRIME POWER RATING 154 kVA | 123 kW

receptacle panel includes 240V single phase twist-lock receptacles and 120V GFCI receptacles that are powered any time the unit is running.

Doosan's advanced controls include an LCD display which annunciates any warnings or shutdowns. In addition, the controller logs all system faults, greatly aiding technicians with diagnostics. The system also supports remote auto start/stop control, plus integration with various telematics systems.

The G125-570 range is powered by Cummins tier 4-compliant diesel engines, paired with high capacity diesel exhaust fluid (DEF) tanks to ensure the DEF supply is matched to the available fuel supply.

G190

Full specifications on page 12



PRIME POWER RATING 181 kVA | 145 kW

G190-G570 Generators

The G190-G325 range features the exclusive DualBox™ enclosure design. This innovative enclosure separates the powertrain from the cooling system, allowing independent control of the cooling performance in each compartment. The engine compartment is cooled by dual, variable speed, electric cooling fans designed to maximize sound attenuation and minimize water ingress. The cooling compartment features a high efficiency, centrifugal style cooling fan which improves fuel economy and provides the cooling performance that tier 4 diesel engines need.



DOOSAN

G240



G240

Full specifications on page 12



PRIME POWER RATING 235 kVA | 188 kW

G325

Full specifications on page 12



PRIME POWER RATING 334 kVA | 267 kW

G400

Full specifications on page 12



PRIME POWER RATING 402 kVA | 322 kW

G570

Full specifications on page 12



PRIME POWER RATING 570 kVA | 456 kW

G190-G570 Generators, cont.

A strong and powerful alternator is a must when powering critical jobs, so Doosan selects alternators that exceed the need. Separately-excited, brushless alternators have the motor starting capability required to power tower cranes, rock crushers and oilfield equipment, while the solid state automatic voltage regulators provide the precise voltage control needed in sensitive applications such as concerts, film production and special events.

Additionally, Doosan selects the highest-grade insulating materials to ensure long life and resistance to dust and moisture common in mobile applications.

Doosan mobile generators have been designed with the service technician in mind. With 500 hour intervals between fluid and filter exchanges, you can be sure that downtime for maintenance is minimized. All maintenance points are easily accessible and designed for fast and easy service.

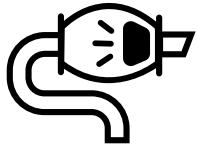
The G400 model is packaged in a compact footprint. Featuring the proven CoolBox Plus™ enclosure, the variable speed cooling fan ensures precision package cooling, reduced noise levels and improved fuel economy. Available with the standard TG410 control or the optional Deif AGC4 Power Management System, the G400 is versatile enough to support any application.

The G570 model includes the latest and greatest T4F engine technology which requires no minimum load. This machine has the highest power density in the market with an oversized alternator and small footprint. The G570 is designed for easy, seamless paralleling with other gensets and comes standard with a DEIF paralleling controller.

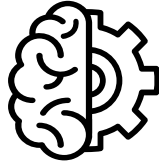
Doosan mobile generators can be equipped with a broad array of factory options including:

- Cold weather packages
- Remote fuel and DEF connections
- Battery chargers
- Camlock panels
- Remote telemetry

AVOID WET STACKING



AUTONOMOUS OPERATION



COLD TEMP



INCREASED UPTIME



Intelligent Load Management System

Doosan understands that generators must perform, even in challenging light load applications that may be further affected by extremely low temperatures. Whether a cyclical application, such as an oilfield pump jack, or a periodic load, such as a mancamp, even properly sized generators can suffer performance or reliability problems. This is particularly challenging for modern tier 4 engines which require high exhaust temperatures for proper performance of the emissions control components.

To perform at its best, your generator must reach a certain operational temperature – anything less hinders performance and makes it difficult to burn off excess fuel. The unburned fuel becomes a sludge-like buildup or wetness in the exhaust system known as “wet stacking.” Diesel generator wet stacking can clog the exhaust and aftertreatment system, requiring time-consuming cleaning and expensive repairs. Wet stacking can also cause permanent damage to internal engine components

ILMS automatically raises the engine and exhaust temperature with supplemental heat, achieving the optimal operating temperature to prevent diesel generator wet stacking and ensure generator performance in light load and fluctuating conditions. Engine manufacturers require a minimum of 30% load on the engine for optimum performance. If you have a small load at your jobsite, the ILMS option will allow you to meet that requirement, resulting in increased performance and reliability without sacrificing capacity or fuel economy.

Paralleling and Power Management

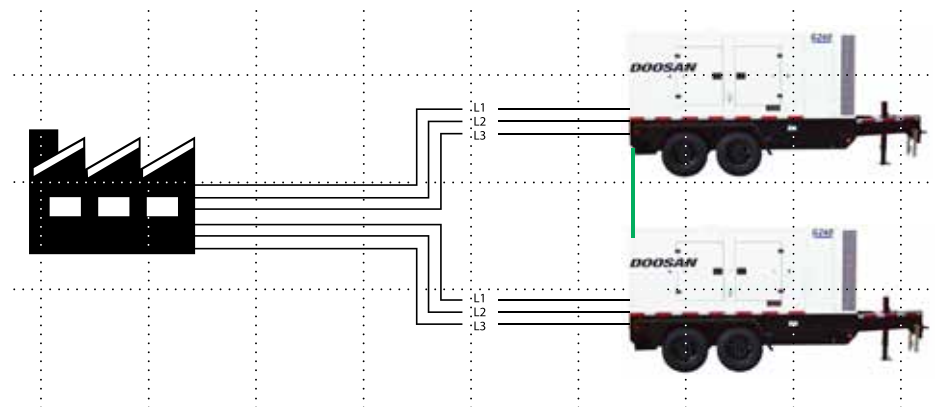
For applications that require additional power or desire redundancy to ensure the ultimate reliability, Doosan offers advanced control systems that allow multiple generators to be synchronized and paralleled together. Doosan has partnered with Deif, a global leader in control systems, to offer a highly configurable control system capable of supporting a broad range of applications, but also intuitive and easy to operate by rental customers.

Load sharing is accomplished by a two-wire CANbus data link and additionally has the option to communicate with other common brands of controller via a three-wire analog data link. The system offers advanced power management capability including load dependent starting and stopping, asymmetric load-sharing, and priority selection which allow the user to optimize load-sharing based on running hours or fuel consumption.

The system comes fully configured from the factory which greatly simplifies commissioning and set up. The controller is easily programmed through the operator interface or via a laptop interface using Deif’s downloadable USW configuration software.

For more advanced applications, Doosan offers the feature-enhanced Deif AGC4 controller. Coupled with the Leroy Somer D510C digital AVR, the system can be easily programmed for high performance in challenging applications such as motor starting, transformer energizing, and close before excitation which can synchronize multiple generators in less than 10 seconds following blackout.

Doosan’s complete solution includes a fully packaged control system, a motorized main circuit breaker, Coupled with the Leroy Somer D510C digital AVR and easy terminations for all required customer connections.





G25

DOOSAN

DoosanPortablePower.com

DOOSAN

Environmental

Specifications

Specifications

Model	G25WDO-3A-T4F			G40WDO-3A-T4F			G50WDO-3A-T4F			G70WDO-3A-T4F			G125WCU-3A-T4F			G150WCU-3A-T4F		
PRIME POWER RATING	AMPS	KW	KVA	AMPS	KW	KVA	AMPS	KW	KVA	AMPS	KW	KVA	AMPS	KW	KVA	AMPS	KW	KVA
@ 480V-3Ø, 0.8PF, 60Hz	30	20	25	47	31	39	58	38	48	84	56	70	151	100	125	186	123	154
@ 240V-3Ø, 0.8PF, 60Hz	60	20	25	93	31	39	115	38	48	168	56	70	301	100	125	371	123	154
@ 208V-3Ø, 0.8PF, 60Hz	61	17	22	106	31	39	125	36	45	190	55	68	336	97	121	411	118	148
@ 240V-1Ø, 1.0PF, 60Hz	69	16.5	16.5	134	32	32	140	33.6	33.6	209	50	50	360	86.5	86.5	433	104	104
@ 120V-1Ø, 1.0PF, 60Hz	69 × 2	16.5	16.5	134 × 2	32	32	140 × 2	33.6	33.6	209 × 2	50	50	360 × 2	86.5	86.5	433 × 2	104	104
@ 400V-3Ø, 0.8PF, 50Hz	29	16	20	45	25	31	58	32	40	89	50	62	152	84	105	191	106	132
Voltage Configuration	3-Position Switch			3-Position Switch			3-Position Switch			3-Position Switch			3-Position Switch			3-Position Switch		
Frequency Capability	50Hz/60Hz Switchable			50Hz/60Hz Switchable			50Hz/60Hz Switchable			50Hz/60Hz Switchable			50Hz/60Hz Switchable			50Hz/60Hz Switchable		
ENGINE																		
Engine Make / Model	Doosan D18			Doosan D24			Doosan D24			Doosan D34			Cummins QSB5-G11			Cummins QSB5-G12		
Displacement (L)	1.794			2.392			2.392			3.409			4.5			4.5		
Number of Cylinders	3			4			4			4			4			4		
Power Output @ 1800RPM - HP (kWm)	33.5 (25)			48.8 (36)			59.8 (44.6)			85.8 (64)			153 (114)			186 (139)		
Emissions Tier Level	Tier 4 Final			Tier 4 Final			Tier 4 Final			Tier 4 Final			Tier 4 Final			Tier 4 Final		
Aftertreatment Technology	DOC			DOC			DOC			DOC / SCR			DOC / SCR			DOC / SCR		
Usable Fuel Tank Capacity - Gal (L)	46.7 (177)			110 (416)			110 (416)			110 (416)			176.5 (668)			176.5 (668)		
Diesel Exhaust Fluid (DEF) Capacity - Gal (L)	N/A			N/A			N/A			5.1 (19.3)			24.4 (92.4)			24.4 (92.4)		
Runtime @ 100% Load - Hr	25.9			44.9			37.2			25			24.5			20.1		
DIMENSIONS WITH RUNNING GEAR																		
Length - in (mm)	130.5 (3315)			130.5 (3315)			130.5 (3315)			163.8 (4161)			171 (4343)			171 (4343)		
Width - in (mm)	72.8 (1850)			72.8 (1850)			72.8 (1850)			71.3 (1810)			72.5 (1841)			72.5 (1841)		
Height - in (mm)	76.6 (1946)			78.4 (1992)			78.4 (1992)			93.3 (2371)			91.0 (2311)			91.0 (2311)		
Weight (Ready to Run) - lb (kg)	3140 (1424)			3870 (1755)			3870 (1755)			5550 (2518)			6950 (3152)			7040 (3193)		
Sound Level @ 23 ft (7m) and 100%	63			64			64			64			68			69		

Model	G190WCU-3A-T4F			G240WCU-3B-T4F			G325WCU-3B-T4F			G400WCU-3B-T4F			G570WCU-2B-T4F		
PRIME POWER RATING	AMPS	KW	KVA	AMPS	KW	KVA	AMPS	KW	KVA	AMPS	KW	KVA	AMPS	KW	KVA
@ 480V-3Ø, 0.8PF, 60Hz	218	145	181	283	188	235	401	267	334	484	322	402	686	456	570
@ 240V-3Ø, 0.8PF, 60Hz	434	145	181	566	188	235	803	267	334	967	322	402	1371	456	570
@ 208V-3Ø, 0.8PF, 60Hz	501	145	181	608	175	219	877	253	316	1116	322	402	1582	456	570
@ 240V-1Ø, 1.0PF, 60Hz	458	110	110	567	136	136	821	197	197	900	216	216	1063	255	255
@ 120V-1Ø, 1.0PF, 60Hz	458 × 2	110	110	567 × 2	136	136	821 × 2	197	197	900 × 2	216	216	N/A	N/A	N/A
@ 400V-3Ø, 0.8PF, 50Hz	238	132	165	289	160	200	404	224	280	559	310	387	N/A	N/A	N/A
Voltage Configuration	3-Position Switch			Link Board Panel			Link Board Panel			Link Board Panel			Link Board Panel		
Frequency Capability	50Hz/60Hz Switchable			50Hz/60Hz Switchable			50Hz/60Hz Switchable			50Hz/60Hz Switchable			60Hz		
ENGINE															
Engine Make / Model	Cummins QSB7-G8			Cummins QSB7-G9			Cummins QSL9-G9			Cummins QSG12			Cummins X15		
Displacement (L)	6.7			6.7			8.9			11.8			14.95		
Number of Cylinders	6			6			6			6			6		
Power Output @ 1800RPM - HP (kWm)	219 (163)			282 (210)			393 (293)			475 (354)			680 (507)		
Emissions Tier Level	Tier 4 Final			Tier 4 Final			Tier 4 Final			Tier 4 Final			Tier 4 Final		
Aftertreatment Technology	DOC / SCR			DOC / SCR			DOC / SCR			DOC / DPF / SCR			SCR		
Usable Fuel Tank Capacity - Gal (L)	330 (1249)			330 (1249)			460 (1741)			470 (1780)			656 (2483.2)		
Diesel Exhaust Fluid (DEF) Capacity - Gal (L)	24.4 (92.4)			24.4 (92.4)			24.4 (92.4)			46 (174)			46 (174)		
Runtime @ 100% Load - Hr	31.7			24.4			24.1			20.2			21.1		
DIMENSIONS WITH RUNNING GEAR															
Length - in (mm)	224 (5689)			224 (5689)			240 (6098)			241 (6121)			260 (6604)		
Width - in (mm)	83.2 (2114)			83.2 (2114)			83 (2109)			83 (2109)			98.5 (2502)		
Height - in (mm)	102.9 (2615)			102.9 (2615)			113 (2870)			115 (2921)			119.8 (3043)		
Weight (Ready to Run) - lb (kg)	11377 (5172)			11377 (5172)			14032 (6378)			15450 (7022)			23574 (10693)		
Sound Level @ 23 ft (7m) and 100%	69			69			76			76			75		

Lighting Systems



LCV & BALLOON LIGHT

For reliable illumination of special events, road and bridge construction, emergency and disaster relief, and general construction sites, choose a Doosan Portable Power lighting system. Our LCV light tower has a compact footprint and an industry leading runtime of 105 hours on a single fill. The BL400 balloon light provides high-quality LED lighting and is the optimal choice for applications where glare-free light is required.

Light Compaction

Upright Rammers



RX-264H | RX-304H | RX-344H

Charged with industry-leading impact forces

Forward Vibratory Plate Compactors



BX-60WH | BX-80WH | BX-120WH

Versatility & reliability

Reversible Vibratory Plate Compactors



BXR-60H | BXR-100H | BXR-200H | BXR-300H

Built to perform, built to last

Walk-Behind Vibratory Rollers



**SX-170H | DX-500E | DX-600H | DX-600E
DX-700H | DX-700E**

Smooth, efficient compaction in complex applications

Air Compressors

Small & Medium Air



**P185-HP150 | P185 Utility
XP185-VHP165 | C185
P250-MHP185 | P425/HP375
HP450/VHP400**

Our high-performance Doosan engines feature diesel oxidation catalyst (DOC) aftertreatment system, which is virtually maintenance-free. Our spin-on oil separation system reduces element changes to just two minutes.

Large Air Low Pressure



XP825/HP750 | HP915 | HP1600

An enhanced ViewPort control panel, easy access to manuals, full color back-lit LED displays, and industry-leading service intervals streamline machine operation.

Large Air High Pressure



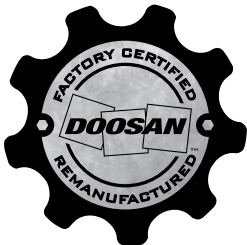
XHP750 | XHP1170

Doosan designed and manufactured airends require less horsepower to deliver a high-volume cfm output for greater fuel economy.



OIL, FILTERS & AIREND FLUIDS

Protect your investment in quality equipment with genuine OEM parts. Doosan Portable Power is your source for the highest-quality parts, filters and lubricants for your Doosan Portable Power products. For information, please contact: 800-633-5206 portablepowersales@doosan.com



REMANUFACTURING PROGRAM

Doosan's Certified Remanufacturing Program extends the life of your Doosan or Ingersoll-Rand portable air compressor or mobile generator, offering like-new performance at less cost, complete with a new warranty. Our Airend Exchange Program or remanufactured starters and alternators can also save you money.



INSTRUMENT QUALITY AIR

Clean air is essential to the safety and efficiency of many compressed air applications. Doosan Portable Power IQ System air compressors provide instrument-quality air that is 99.99% free of contaminants – removing harmful dust, dirt, moisture and oil that are present in untreated air. The unique, onboard IQ System is fully-enclosed within the Doosan air compressor design. A lockable valve system makes it easy to instantly switch between instrument-quality and standard compressed air to tackle a variety of applications all in one day, saving time and money.

DOOSAN[®]

Portable Power

Experience Doosan Portable Power and our industry-leading support and service. Whatever the job, we have the solution. From our comprehensive range of reliable air compressors, to lighting systems and generators, we have a solution to fit your needs. Running a successful business takes more than powerful equipment. That's why Doosan Portable Power partners with an experienced dealer network to stand beside you every step of the way. Doosan Portable Power — more than 100 years of providing excellence.



Doosan Portable Power
1293 Glenway Drive
Statesville, NC 28625
DoosanPortablePower.com

©2021 Doosan Portable Power. All rights reserved.
Rev. 2

Product improvement is a continuous goal at Doosan Infracore Portable Power. Specifications and design are subject to change without notice or obligation. Warranty terms and conditions on new product sales are subject to change. All products are subject to the terms of the applicable warranty in effect on the date of purchase; contact your local Doosan dealer for the current applicable warranty. Doosan[®] and the Doosan logo are registered trademarks of Doosan Corp. in the United States and various other countries around the world.

