

DRAWINGS PREPARED FOR:  
 LOUISIANA CAT  
 TOTAL ENERGY  
 30K DOUBLEWALL 350 GALLON TRAILER  
 w/ WEATHER ENCLOSURE  
 WO# 41046  
 9/4/2015



5401 NW 44TH AVE., BUILDING 7, OCALA, FL 34482  
 PHONE (352) 414-4700 FAX (352) 414-4642

**SPECIAL INSTRUCTIONS:**

SPECIAL INSTRUCTIONS	
1	ELECTRIC BRAKES
2	MOUNT UNIT AND CONNECT FUEL LINES
3	MOUNT ENCLOSURE ON TRAILER DECK
4	2-1/2" PINTLE RING
5	PAINT TRAILER BLACK
6	SHORE POWER KIT FOR JACKET WATER HEATER & BATTER CHARGER. INCLUDES 1 - 15 AMP, 120V INLET RECEPTACLE, 1 - 20 AMP, 208V INLET RECEPTACLE, 1- 25 FT 120V, 12/3 OUTDOOR EXTENSION CORD, AND 1 - 25 FT 208V, 12/3 EXTENSION CORD.
7	ENCLOSURE TO HAVE INTERIOR AND EXTERIOR LED LIGHTS WITH 1-HOUR TIMER SWITCHES w/ HOLD (P/N FF60MHC) POWERED FROM BATTERY DC FOR GENERAL AREA LIGHTING AND ACCESS TO EQUIPMENT AND CONTROL PANEL. TWO EXTERIOR LIGHTS (ONE ON EACH SIDE) WITH ONE SWITCH AND THREE INTERIOR LIGHTS WITH TWO SWITCHES. ALL SWITCHES WILL BE LOCATED INSIDE ENCLOSURE.

**NOTES:**

- GENERATOR, CAT C18 600KW  
 DIMENSIONS: 133" L x 64" W x 83" H  
 WEIGHT:8743 LBS  
 DRAWING # : 444-5749
- TOTAL AIRFLOW REQUIRED: 30067 CFM
- ENCLOSURE WALLS: 2" ALUMINUM TUBE WELDED FRAME
- ENCLOSURE ROOF: 2" ALUMINUM TUBE WELDED FRAME
- ENCLOSURE DIMENSIONS: 210" L x 72" W x 91" H
- ENCLOSURE WEIGHT (APPROX.): 2500 LBS
- ENCLOSURE COLOR: WHITE
- ENCLOSURE SHALL BE PROVIDED w / 4-POINT LIFTING LUGS
- TOTAL PACKAGE WEIGHT:20811 LBS

**Sheet List Table**

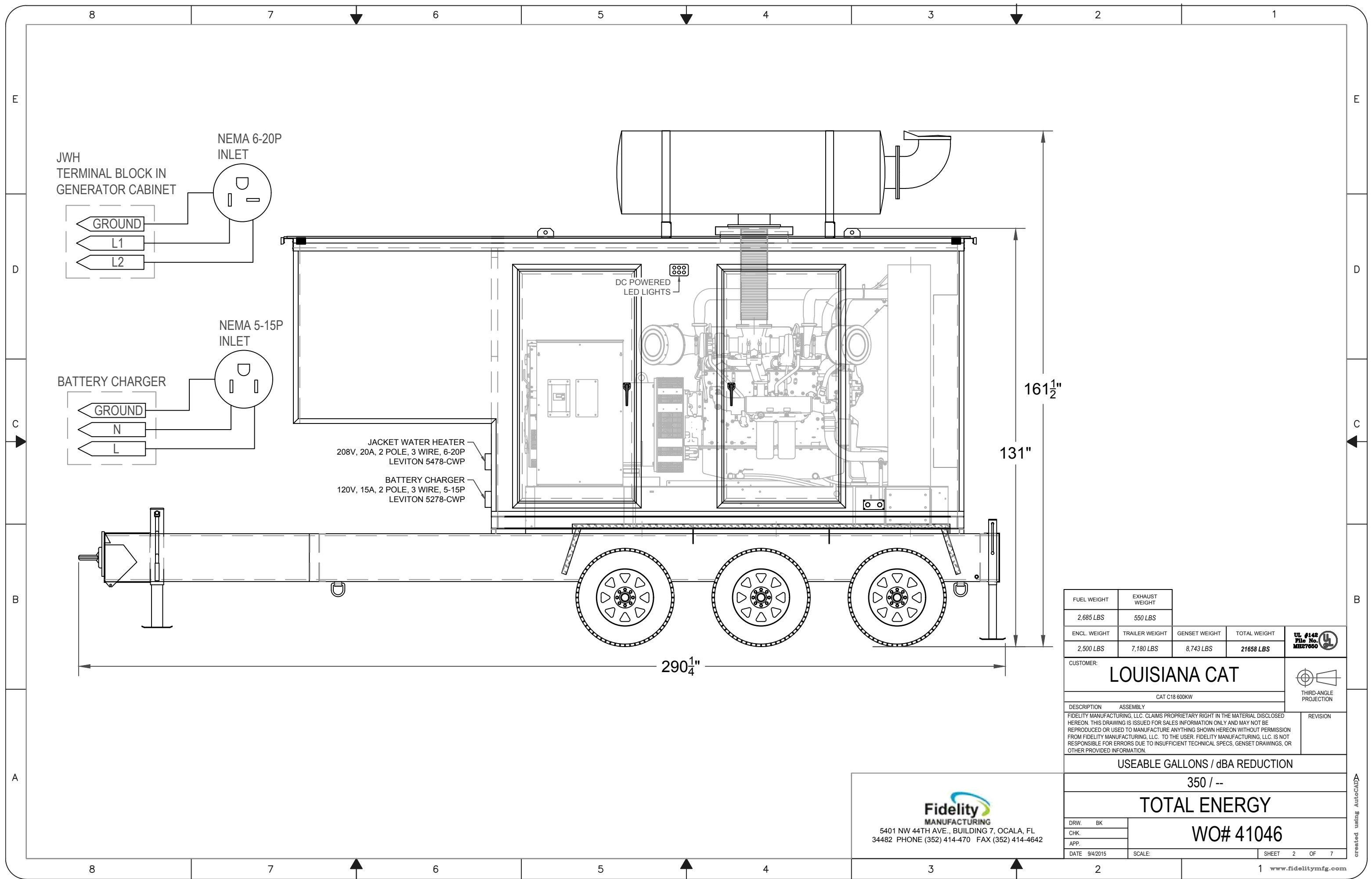
Sheet Number	Sheet Title
1	COVER SHEET
2	ASSEMBLY
3	WEATHER ENCLOSURE RSV
4	WEATHER ENCLOSURE LSV
5	WEATHER ENCLOSURE ENDS
6	ELECTRICAL PLAN
7	TRAILER PLAN VIEW

**REVISIONS:**

REVISION LEVEL	REVISION DESCRIPTION	SHEET OF CHANGE(S)	ENGINEER	DATE
00	INITIAL RELEASE		BK	7/29/2015
01	UPDATED NOTES 6 & 7, ADDED PLAN VIEW & WIRING DIAGRAM		BK	9/4/2015
02				
03				
04				

**DRAWING ACCEPTED FOR PRODUCTION**

SIGNATURE	
PRINT NAME-TITLE	DATE / /



FUEL WEIGHT	EXHAUST WEIGHT			
2,685 LBS	550 LBS			
ENCL. WEIGHT	TRAILER WEIGHT	GENSET WEIGHT	TOTAL WEIGHT	
2,500 LBS	7,180 LBS	8,743 LBS	21,658 LBS	

CUSTOMER: **LOUISIANA CAT**  
 CAT C18 600KW  
 DESCRIPTION ASSEMBLY

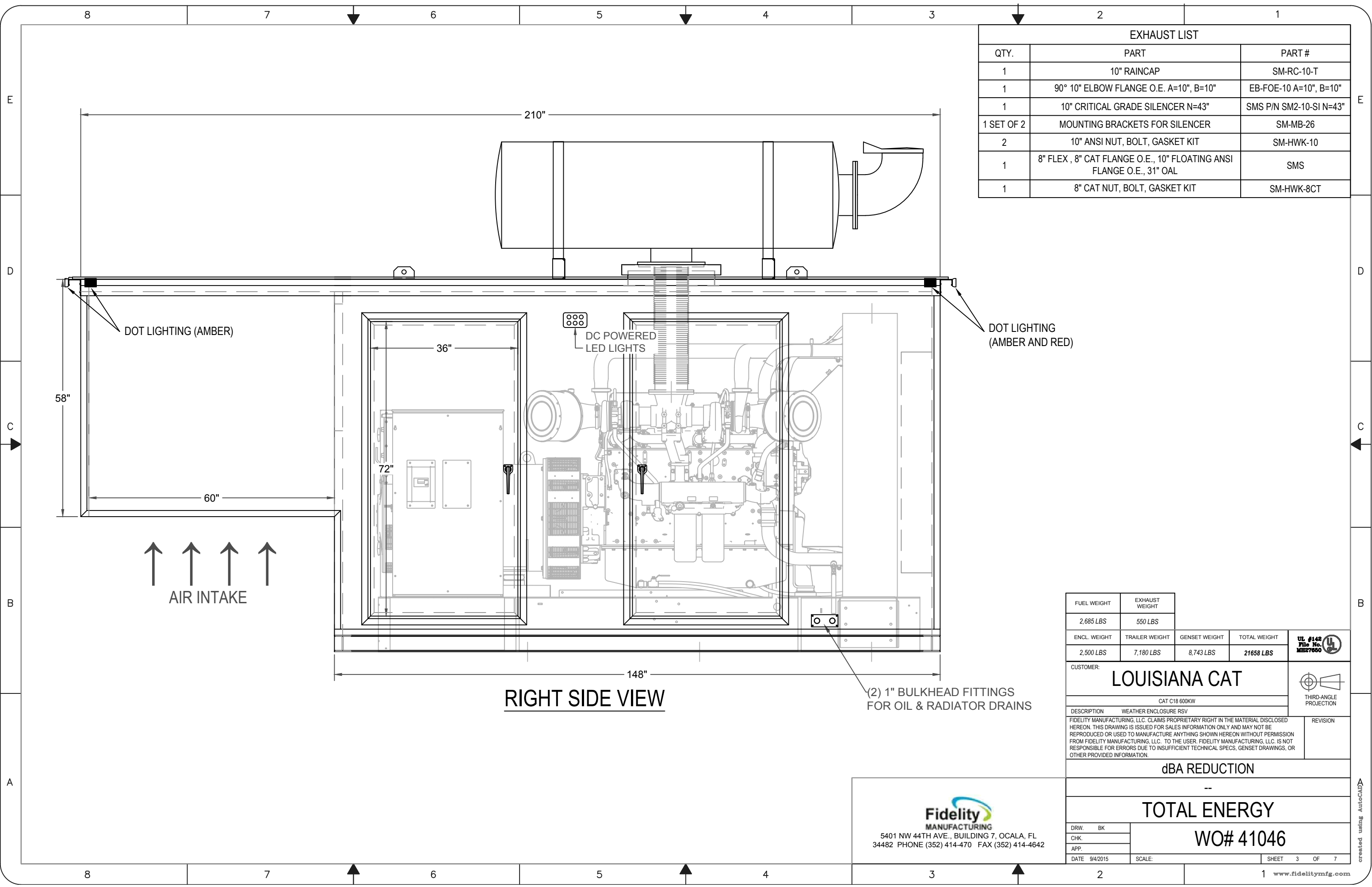
FIDELITY MANUFACTURING, LLC. CLAIMS PROPRIETARY RIGHT IN THE MATERIAL DISCLOSED HEREON. THIS DRAWING IS ISSUED FOR SALES INFORMATION ONLY AND MAY NOT BE REPRODUCED OR USED TO MANUFACTURE ANYTHING SHOWN HEREON WITHOUT PERMISSION FROM FIDELITY MANUFACTURING, LLC. TO THE USER. FIDELITY MANUFACTURING, LLC. IS NOT RESPONSIBLE FOR ERRORS DUE TO INSUFFICIENT TECHNICAL SPECS, GENSET DRAWINGS, OR OTHER PROVIDED INFORMATION.

USEABLE GALLONS / dBA REDUCTION  
 350 / --  
**TOTAL ENERGY**

DRW. BK  
 CHK.  
 APP.  
 DATE 9/4/2015  
 SCALE:  
**WO# 41046**  
 SHEET 2 OF 7

**Fidelity**  
 MANUFACTURING  
 5401 NW 44TH AVE., BUILDING 7, OCALA, FL  
 34482 PHONE (352) 414-470 FAX (352) 414-4642

created using AutoCAD



EXHAUST LIST		
QTY.	PART	PART #
1	10" RAINCAP	SM-RC-10-T
1	90° 10" ELBOW FLANGE O.E. A=10", B=10"	EB-FOE-10 A=10", B=10"
1	10" CRITICAL GRADE SILENCER N=43"	SMS P/N SM2-10-SI N=43"
1 SET OF 2	MOUNTING BRACKETS FOR SILENCER	SM-MB-26
2	10" ANSI NUT, BOLT, GASKET KIT	SM-HWK-10
1	8" FLEX, 8" CAT FLANGE O.E., 10" FLOATING ANSI FLANGE O.E., 31" OAL	SMS
1	8" CAT NUT, BOLT, GASKET KIT	SM-HWK-8CT

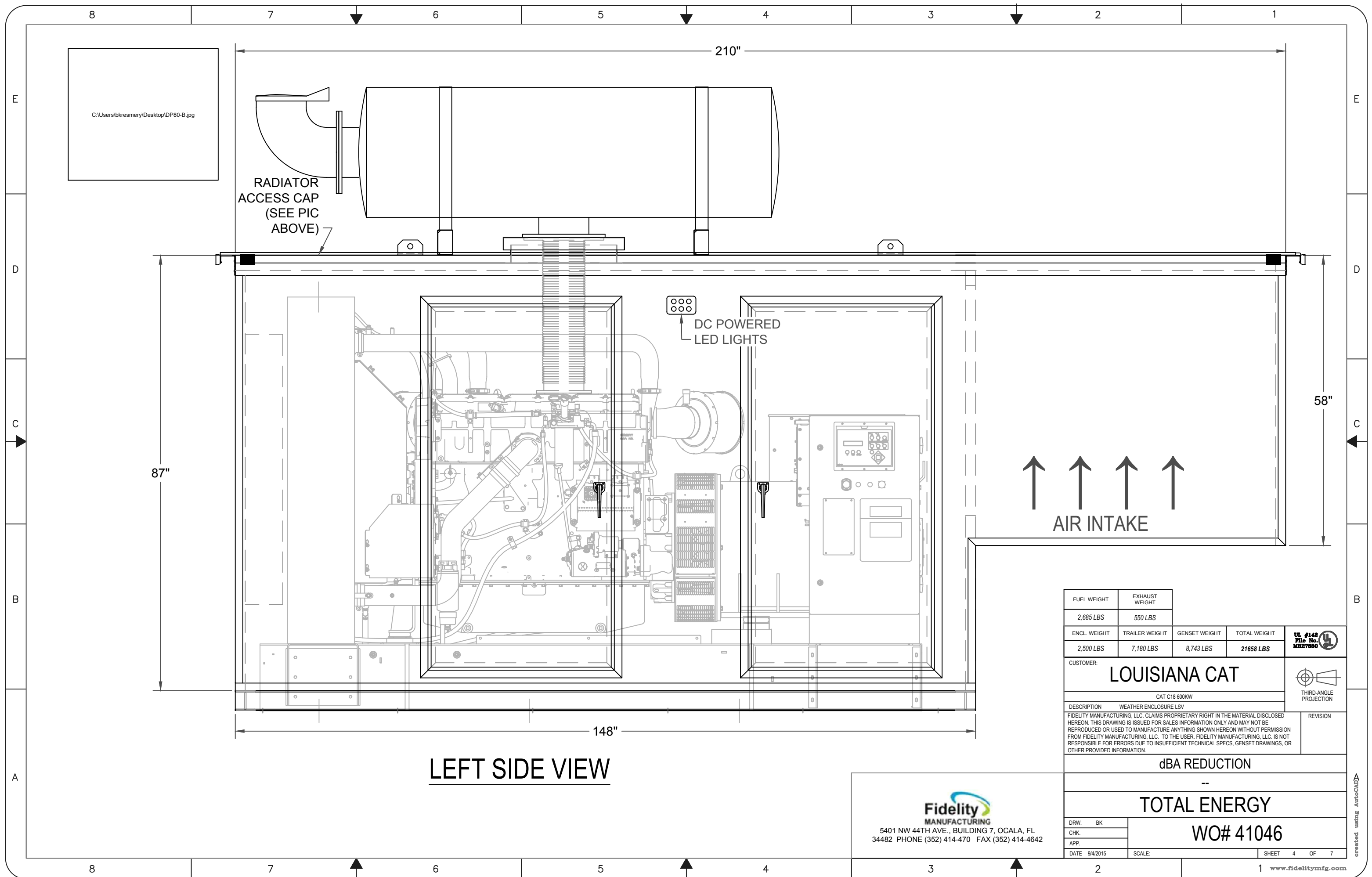
**RIGHT SIDE VIEW**

(2) 1" BULKHEAD FITTINGS FOR OIL & RADIATOR DRAINS

FUEL WEIGHT	EXHAUST WEIGHT			
2,685 LBS	550 LBS			
ENCL. WEIGHT	TRAILER WEIGHT	GENSET WEIGHT	TOTAL WEIGHT	 THIRD-ANGLE PROJECTION
2,500 LBS	7,180 LBS	8,743 LBS	21658 LBS	
CUSTOMER: <b>LOUISIANA CAT</b>				
CAT C18 600KW				
DESCRIPTION WEATHER ENCLOSURE RSV				
<small>FIDELITY MANUFACTURING, LLC. CLAIMS PROPRIETARY RIGHT IN THE MATERIAL DISCLOSED HEREON. THIS DRAWING IS ISSUED FOR SALES INFORMATION ONLY AND MAY NOT BE REPRODUCED OR USED TO MANUFACTURE ANYTHING SHOWN HEREON WITHOUT PERMISSION FROM FIDELITY MANUFACTURING, LLC. TO THE USER. FIDELITY MANUFACTURING, LLC. IS NOT RESPONSIBLE FOR ERRORS DUE TO INSUFFICIENT TECHNICAL SPECS, GENSET DRAWINGS, OR OTHER PROVIDED INFORMATION.</small>				
<b>dBa REDUCTION</b> --				
<b>TOTAL ENERGY</b> <b>WO# 41046</b>				
DRW. BK	CHK.	APP.	DATE 9/4/2015	SCALE:
			SHEET 3 OF 7	www.fidelitymfg.com

5401 NW 44TH AVE., BUILDING 7, OCALA, FL 34482
   
 PHONE (352) 414-470 FAX (352) 414-4642

created using AutoCAD



C:\Users\bkresmery\Desktop\DP80-B.jpg

RADIATOR ACCESS CAP (SEE PIC ABOVE)

DC POWERED LED LIGHTS

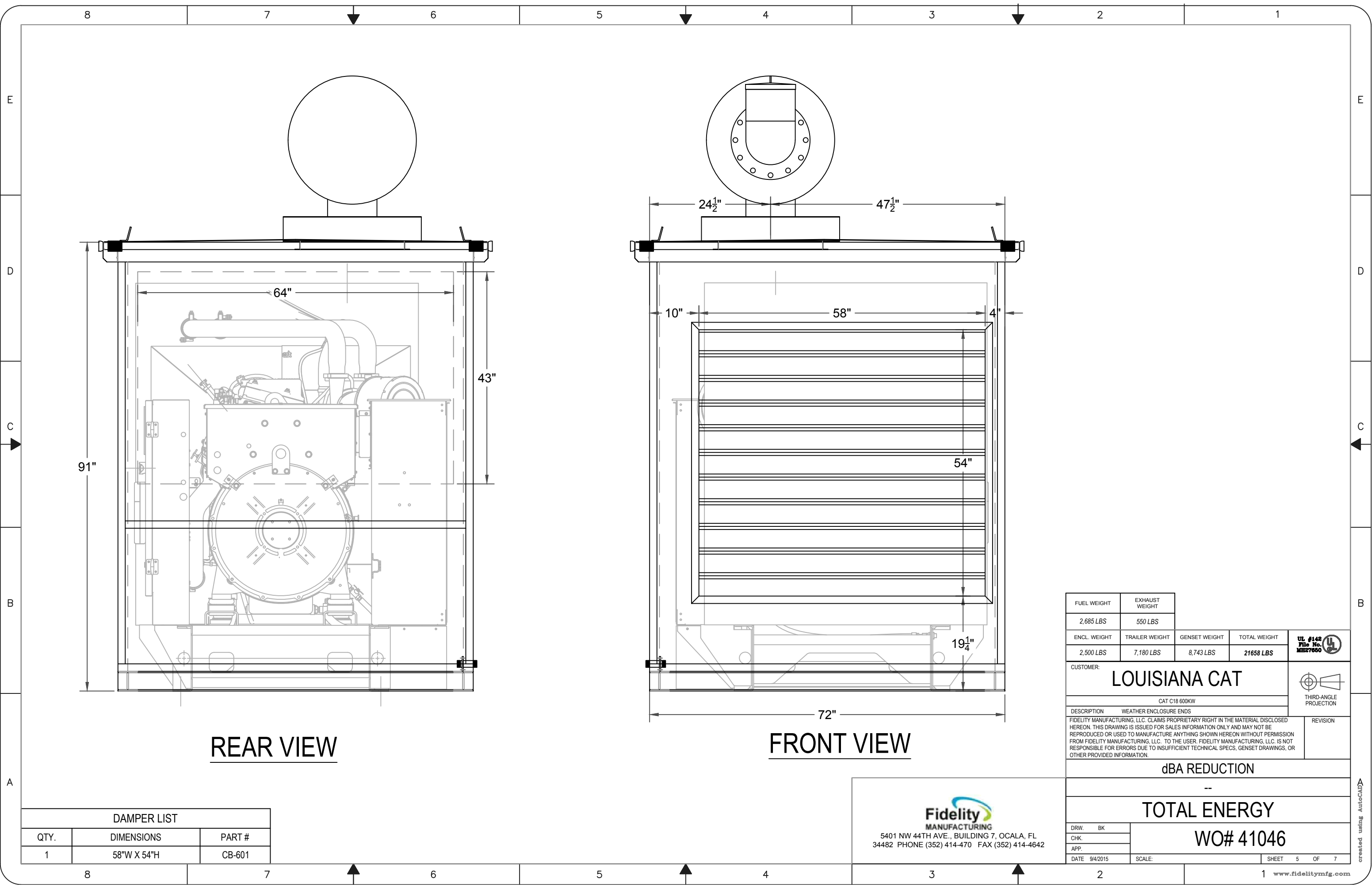
AIR INTAKE

**LEFT SIDE VIEW**

FUEL WEIGHT	EXHAUST WEIGHT											
2,685 LBS	550 LBS											
ENCL. WEIGHT	TRAILER WEIGHT	GENSET WEIGHT	TOTAL WEIGHT	 THIRD-ANGLE PROJECTION								
2,500 LBS	7,180 LBS	8,743 LBS	21658 LBS									
CUSTOMER: <b>LOUISIANA CAT</b>												
DESCRIPTION: CAT C18 600KW WEATHER ENCLOSURE LSV												
<small>FIDELITY MANUFACTURING, LLC. CLAIMS PROPRIETARY RIGHT IN THE MATERIAL DISCLOSED HEREON. THIS DRAWING IS ISSUED FOR SALES INFORMATION ONLY AND MAY NOT BE REPRODUCED OR USED TO MANUFACTURE ANYTHING SHOWN HEREON WITHOUT PERMISSION FROM FIDELITY MANUFACTURING, LLC. TO THE USER. FIDELITY MANUFACTURING, LLC. IS NOT RESPONSIBLE FOR ERRORS DUE TO INSUFFICIENT TECHNICAL SPECS, GENSET DRAWINGS, OR OTHER PROVIDED INFORMATION.</small>												
<table border="1"> <tr> <td>REVISION</td> <td></td> </tr> <tr> <td> </td> <td> </td> </tr> </table>					REVISION							
REVISION												
<table border="1"> <tr> <td colspan="2">dBA REDUCTION</td> </tr> <tr> <td colspan="2">--</td> </tr> <tr> <td colspan="2">TOTAL ENERGY</td> </tr> <tr> <td colspan="2">WO# 41046</td> </tr> </table>					dBA REDUCTION		--		TOTAL ENERGY		WO# 41046	
dBA REDUCTION												
--												
TOTAL ENERGY												
WO# 41046												
DRW. BK	SCALE:		SHEET 4 OF 7									
CHK.												
APP.												
DATE 9/4/2015			www.fidelitymfg.com									

**Fidelity**  
MANUFACTURING  
5401 NW 44TH AVE., BUILDING 7, OCALA, FL  
34482 PHONE (352) 414-470 FAX (352) 414-4642

created using AutoCAD



**REAR VIEW**

**FRONT VIEW**

FUEL WEIGHT	EXHAUST WEIGHT			
2,685 LBS	550 LBS			
ENCL. WEIGHT	TRAILER WEIGHT	GENSET WEIGHT	TOTAL WEIGHT	
2,500 LBS	7,180 LBS	8,743 LBS	21658 LBS	

CUSTOMER:	<b>LOUISIANA CAT</b>	 THIRD-ANGLE PROJECTION
DESCRIPTION	CAT C18 600KW WEATHER ENCLOSURE ENDS	

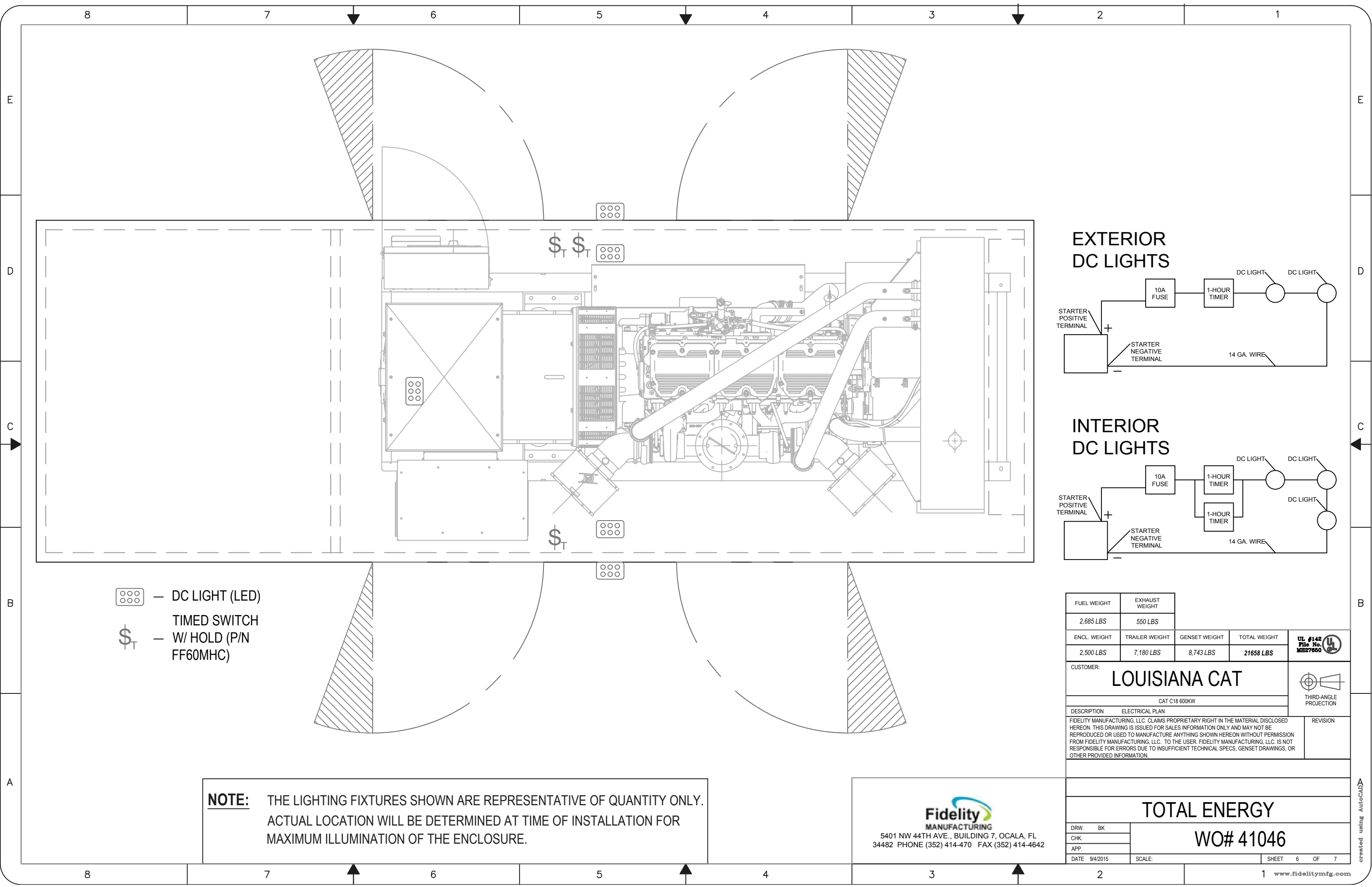
FIDELITY MANUFACTURING, LLC. CLAIMS PROPRIETARY RIGHT IN THE MATERIAL DISCLOSED HEREON. THIS DRAWING IS ISSUED FOR SALES INFORMATION ONLY AND MAY NOT BE REPRODUCED OR USED TO MANUFACTURE ANYTHING SHOWN HEREON WITHOUT PERMISSION FROM FIDELITY MANUFACTURING, LLC. TO THE USER. FIDELITY MANUFACTURING, LLC. IS NOT RESPONSIBLE FOR ERRORS DUE TO INSUFFICIENT TECHNICAL SPECS, GENSET DRAWINGS, OR OTHER PROVIDED INFORMATION.

dBa REDUCTION		 REVISION
--		
TOTAL ENERGY		
WO# 41046		
DRW. BK	SCALE:	SHEET 5 OF 7
CHK.		
APP.		
DATE 9/4/2015		

DAMPER LIST		
QTY.	DIMENSIONS	PART #
1	58"W X 54"H	CB-601

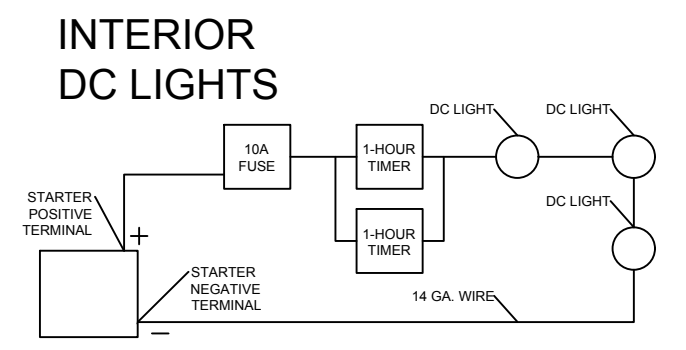
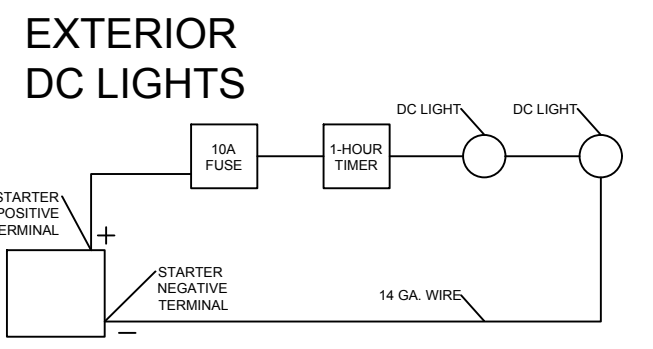
**Fidelity**  
 MANUFACTURING  
 5401 NW 44TH AVE., BUILDING 7, OCALA, FL  
 34482 PHONE (352) 414-470 FAX (352) 414-4642

created using AutoCAD



- DC LIGHT (LED)
- TIMED SWITCH W/ HOLD (P/N FF60MHC)

**NOTE:** THE LIGHTING FIXTURES SHOWN ARE REPRESENTATIVE OF QUANTITY ONLY. ACTUAL LOCATION WILL BE DETERMINED AT TIME OF INSTALLATION FOR MAXIMUM ILLUMINATION OF THE ENCLOSURE.



FUEL WEIGHT	EXHAUST WEIGHT			
2,685 LBS	550 LBS			
ENCL. WEIGHT	TRAILER WEIGHT	GENSET WEIGHT	TOTAL WEIGHT	
2,500 LBS	7,180 LBS	8,743 LBS	21658 LBS	

CUSTOMER:	<b>LOUISIANA CAT</b>	 THIRD-ANGLE PROJECTION
DESCRIPTION	CAT C18 600KW	

FIDELITY MANUFACTURING, LLC. CLAIMS PROPRIETARY RIGHT IN THE MATERIAL DISCLOSED HEREON. THIS DRAWING IS ISSUED FOR SALES INFORMATION ONLY AND MAY NOT BE REPRODUCED OR USED TO MANUFACTURE ANYTHING SHOWN HEREON WITHOUT PERMISSION FROM FIDELITY MANUFACTURING, LLC. TO THE USER. FIDELITY MANUFACTURING, LLC. IS NOT RESPONSIBLE FOR ERRORS DUE TO INSUFFICIENT TECHNICAL SPECS, GENSET DRAWINGS, OR OTHER PROVIDED INFORMATION.

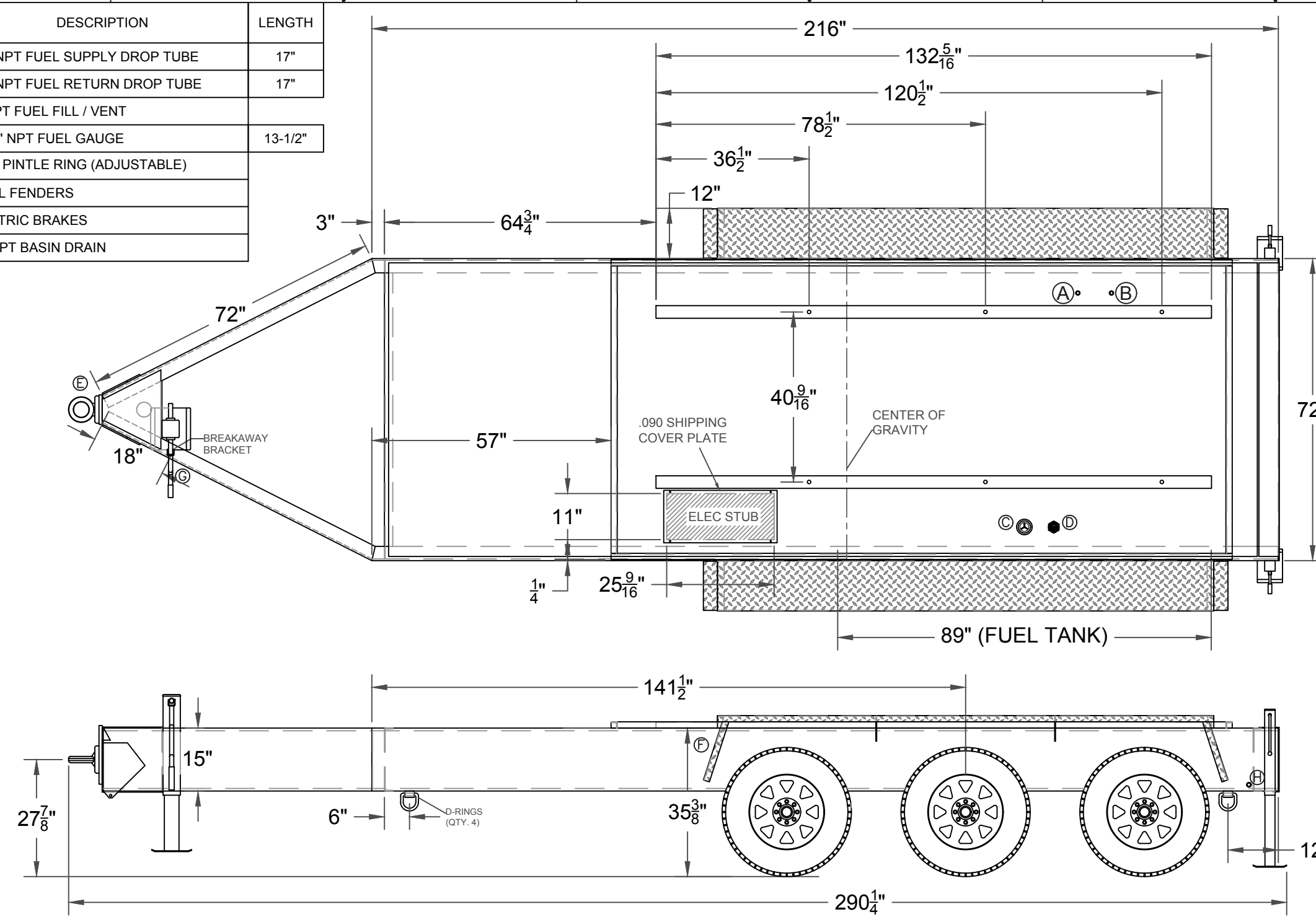
5401 NW 44TH AVE., BUILDING 7, OCALA, FL  
34482 PHONE (352) 414-470 FAX (352) 414-4642

<b>TOTAL ENERGY</b> <b>WO# 41046</b>		DRW. BK	SCALE: _____ SHEET 6 OF 7 www.fidelitymfg.com
		CHK.	
APP.			
DATE 9/4/2015			

created using AutoCAD

FITTING	DESCRIPTION	LENGTH
A	1/2" NPT FUEL SUPPLY DROP TUBE	17"
B	1/2" NPT FUEL RETURN DROP TUBE	17"
C	2" NPT FUEL FILL / VENT	
D	1-1/2" NPT FUEL GAUGE	13-1/2"
E	2-1/2" PINTLE RING (ADJUSTABLE)	
F	STEEL FENDERS	
G	ELECTRIC BRAKES	
H	1/2" NPT BASIN DRAIN	

SPECIAL INSTRUCTIONS	
1	ELECTRIC BRAKES
2	MOUNT UNIT AND CONNECT FUEL LINES
3	MOUNT ENCLOSURE ON TRAILER DECK
4	2-1/2" PINTLE RING
5	PAINT TRAILER BLACK



FUEL WEIGHT	EXHAUST WEIGHT			UL #142 File No. ME27650
2,685 LBS	550 LBS			
ENCL. WEIGHT	TRAILER WEIGHT	GENSET WEIGHT	TOTAL WEIGHT	THIRD-ANGLE PROJECTION
2,500 LBS	7,180 LBS	8,743 LBS	21658 LBS	

CUSTOMER: **LOUISIANA CAT**

DESCRIPTION: CAT C18 600KW

30K DOUBLE WALL TRAILER - 72" X 216" X 15" - 350 GALLONS

FIDELITY MANUFACTURING, LLC. CLAIMS PROPRIETARY RIGHT IN THE MATERIAL DISCLOSED HEREON. THIS DRAWING IS ISSUED FOR SALES INFORMATION ONLY AND MAY NOT BE REPRODUCED OR USED TO MANUFACTURE ANYTHING SHOWN HEREON WITHOUT PERMISSION FROM FIDELITY MANUFACTURING, LLC. TO THE USER. FIDELITY MANUFACTURING, LLC. IS NOT RESPONSIBLE FOR ERRORS DUE TO INSUFFICIENT TECHNICAL SPECS, GENSET DRAWINGS, OR OTHER PROVIDED INFORMATION.

APPROXIMATE GALLONS	
350	
TOTAL ENERGY	
WO# 41046	
DRW. BK	
CHK.	
APP.	
DATE 8/22/2014	SCALE:
SHEET 7 OF 7	

**Fidelity**  
MANUFACTURING  
5401 NW 44TH AVE., BUILDING 7, OCALA, FL  
34482 PHONE (352) 414-470 FAX (352) 414-4642

created using AutoCAD