

# QP-100-V

QUIET POWER GENERATOR  
RENTAL SERIES

**SWP**  
Southwest Products



Powered by **VOLVO PENTA**

*Complete Power Solutions*

## QP-100-V

**Standby Rating: 111 kVA / 88 kWe**

**Prime Rating: 100 kVA / 80 kWe**

**Southwest Products QP-100-V diesel generator is engineered from the ground-up for reliability, durability, and ease-of-use.**

Built with a Volvo Penta Tier 4 Final engine and a compact, rugged design, the QP-100-V is a cost-effective alternative to larger units.

### RELIABLE, STURDY, AND ENVIRONMENTALLY FRIENDLY

- Heavy-duty construction, components and paint
- Reliable 4-cycle, indirect injection, diesel engine
- Volvo Penta Tier 4 Final engine (50 state compliant)
- Oversized alternator with PMG for better motor starting
- Heavy gauge, powder coated, lockable enclosure
- Dual containment fuel cell with containment basin
- 2 year or 2,000 hour limited warranty
- Available with or without optional trailer
- Designed, engineered and assembled in USA

### EXTREMELY QUIET AND FUEL EFFICIENT

- Sound attenuation for superior noise reduction
- Common rail fuel system with gear driven fuel feed pump
- Large capacity fuel cell for extended run time



### FULL FEATURED CONTROL PANEL

- Digital controller with single-button start/stop and 2 wire auto-start
- Full capacity power outlets with lugs and outlets for customer connections
- Circuit breakers for GFCI and twist lock receptacles
- Voltage selection switch with utility power in all voltage modes

Contact SWP for Pricing and Availability

**Surprise, AZ**  
**602.269.3581**

**Signal Hill, CA**  
**562.424.0913**

**Galt, CA**  
**209.245.6000**

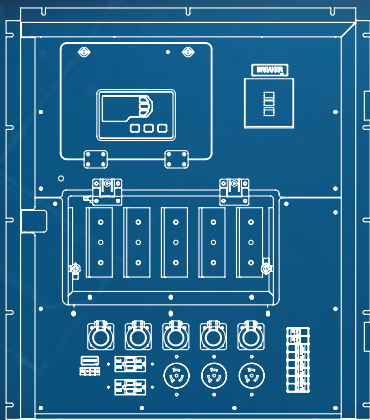
**Houston, TX**  
**832.957.6400**

[www.SouthwestProducts.com](http://www.SouthwestProducts.com)

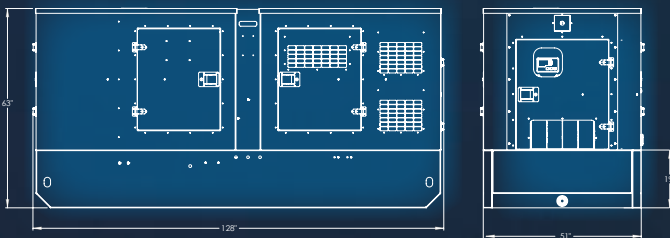
## EASY TO USE CONNECTION AND SERVICE POINTS

- Up to 500 hour service intervals
- Multi-voltage switch with utility outlet power in all voltage modes
- SWP Tough Series TG410 digital genset controller
- Digital engine/generator controller with single button start/stop and 2 wire auto-start
- Optional single axle trailer 79" (W) x 186" (L)
- Custom paint and branding options available
- Single point lift

### Generator Output Panel



### Dimensions



## TECHNICAL SPECIFICATIONS

Model	QP-100-V
Voltages	120/240   120/208   277/480
Standby Rating	111 kVA / 88 kW <sub>e</sub>
Prime Rating	100 kVA / 80 kW <sub>e</sub>
Engine Model	Volvo Penta TAD571VE
Alternator	Mecc Alte/STAMFORD
Sound dBA level @ 23 ft.	67.9 dBA
Main Line Circuit Breaker	400 Amps

### ENCLOSURE SPECIFICATIONS

Weight - Dry	5,242 lb
Length With Trailer	186"
Width With Trailer	79"
Height With Trailer	77"
Weight With Trailer	6,342 lb
Weight Ready to Run	7,400 lb

### ENGINE SPECIFICATIONS

Engine Mfg	Volvo Penta
Model Number	TAD571VE
Prime Output HP (gross)	151
Standby Output HP (gross)	168
Emissions Certification	Tier 4 Final

### ALTERNATOR SPECIFICATIONS\*

277/480 Volt Prime Amps	120.4
277/480 Volt Standby Amps	132.5
120/208 Volt Prime Amps	277.9
120/208 Volt Standby Amps	305.7
120/240 Volt Prime Amps	200.0
120/240 Volt Standby Amps	220.0

\*125/40 C Temp Rise Class H Insulation

### FUEL CONSUMPTION

Fuel Tank Capacity - Gallons	150
Fuel Consumption at Prime Rating	5.7 gal/h
25% load	-
50% load	2.8 gal/h
75% load	4.3 gal/h
100% load	5.7 gal/h
DEF Tank Capacity	70L