



2040 Afton Place
Farmington, NM 87401
Office: 505.327.4945 | Direct: 307.675.5077
jmartindale@emittechnologies.com

Prepared For:
Mary Russell
WAGNER EQUIPMENT COMPANY

QUOTE: QUO-10422-Y8Q0
Expires: October 25, 2013

INFORMATION PROVIDED BY CATERPILLAR

| | |
|-------------------------|-------------|
| Engine: | G3406 TA |
| Horsepower: | 276 |
| RPM: | 1800 |
| Compression Ratio: | 9.4 |
| Exhaust Flow Rate: | 1176 CFM |
| Exhaust Temperature: | 1007 °F |
| Reference: | DM5084-02 |
| Fuel: | Natural Gas |
| Annual Operating Hours: | 8760 |

Uncontrolled Emissions

| | <u>g/bhp-hr</u> |
|---------|-----------------|
| NOx: | 14.85 |
| CO: | 14.80 |
| THC: | 1.86 |
| NMHC: | 0.28 |
| NMNEHC: | N/A |
| HCHO: | N/A |
| O2: | 0.20 % |

POST CATALYST EMISSIONS

| | <u>g/bhp-hr</u> |
|------|-----------------|
| NOx: | <1.00 |
| CO: | <1.00 |

CONTROL EQUIPMENT

Catalyst Housing

| | |
|------------------------|--------------------------|
| Model: | EAS-1450-0505F-2S4E |
| Manufacturer: | EMIT Technologies, Inc |
| Element Size: | Round 14.5" x 3.5" |
| Housing Type: | 2 Element Capacity |
| Catalyst Installation: | Accessible Housing |
| Construction: | 10 gauge Stainless Steel |
| Sample Ports: | 6 (0.5" NPT) |
| Inlet Connections: | 5" Flat Face Flange |
| Outlet Connections: | 5" Flat Face Flange |
| Configuration: | Side In / End Out |
| Silencer: | Integrated |
| Silencer Grade: | Critical |
| Insertion Loss: | 25-30 dBA |
| Estimated Lead Time: | 2 Weeks to Ship |

Catalyst Element

| | |
|----------------------|--------------------------------------|
| Model: | RE-1450-T |
| Catalyst Type: | NSCR, Standard Precious Group Metals |
| Substrate Type: | BRAZED |
| Manufacturer: | EMIT Technologies, Inc |
| Element Quantity: | 1 |
| Element Size: | Round 14.5" x 3.5" |
| Estimated Lead Time: | In Stock |



2040 Afton Place
Farmington, NM 87401
Office: 505.327.4945 | Direct: 307.675.5077
jmartindale@emittechnologies.com

Air Fuel Ratio Controller

| | |
|------------------------------|--|
| Model: | ENG-S-150-TA |
| Manufacturer: | EMIT Technologies, Inc |
| Description: | EDGE NG Air Fuel Ratio Controller 4-Wire Narrowband O2 Sensor Digital Power Valve O2 Sensor Weldment Wiring Harness (2) Type K Thermocouple |
| Digital Power Valve Size: | 1.50" NPT |
| Estimated Lead Time: | In Stock |



2040 Afton Place
Farmington, NM 87401
Office: 505.327.4945 | Direct: 307.675.5077
jmartindale@emittechnologies.com

PRICING

| | | Unit Price | Quantity | Extended Price |
|---|------------------------|-------------------|-----------------|-----------------------|
| EAS-1450-0505F-2S4E | <i>Stainless Steel</i> | \$1,910.00 | 1 | \$1,910.00 |
| RE-1450-T | | \$1,330.00 | 1 | \$1,330.00 |
| ENG-S-150-TA | | \$2,590.00 | 1 | \$2,590.00 |
| 14.5" MOUNTING BRACKET (WRAP AROUND) | | \$150.00 | 1 | \$150.00 |
| | | | TOTAL | \$5,980.00 |



2040 Afton Place
Farmington, NM 87401
Office: 505.327.4945 | Direct: 307.675.5077
jmartindale@emittechnologies.com

WARRANTY

EMIT Technologies, Inc. warrants that the goods supplied will be free from defects in workmanship by EMIT Technologies, Inc. for a period of one (2) year from date of shipment. EMIT Technologies, Inc. will not be responsible for any defects which result from improper use, neglect, failure to properly maintain or which are attributable to defects, errors or omissions in any drawings, specifications, plans or descriptions, whether written or oral, supplied to EMIT Technologies, Inc. by Buyer.

Catalyst performance using an EMIT Air/Fuel ratio controller is dependent upon properly defined set-points, variable with engine and fuel gas composition. Air/fuel ratio controller performance is guaranteed, but not limited, to fuel gas with a HHV content of 1400 BTU/SCF.

Catalyst performance will be guaranteed for a period of 1 year from installation, or 8760 operating hours, whichever comes first. The catalyst shall be operated with an automatic air/fuel ratio controller. The performance guarantee shall not cover the effects of excessive ash masking due to operation at low load, improper engine maintenance, or inappropriate lubrication oil. The performance guarantee shall not cover the effects of continuous engine misfires (cylinder or ignition) exposing the catalyst to excessive exothermic reaction temperatures. In most cases, excluding thermal deactivation, catalyst performance is redeemable by means of proper washing (refer to EMIT Catalyst/Silencer Housing Manual for element wash information, or contact a local EMIT Sales representative).

The exhaust temperature operating range at the converter inlet is a minimum of 600°F for oxidation catalyst and 750 °F for NSCR catalyst, and a maximum of 1250°F.

If a properly functioning, high temperature shut down switch is not installed, thermal deactivation of catalyst at sustained temperatures above 1250°F is not covered. If excessive exposure to over oxygenation of NSCR catalyst occurs due to improperly functioning or non-existent Air/Fuel ratio control, then deactivation of catalyst is not warranted.

The catalyst conversion efficiencies (% reduction) will be guaranteed for engine loads of 50 to 100 percent. Standard Oxidation Catalyst conversion efficiencies (% reduction) will be guaranteed for fuel gas containing less than 1.5% mole fraction of non-methane, non-ethane hydrocarbons. Applications where fuel gas exceeds this level will require a Premium Oxidation Catalyst to maintain guaranteed VOC conversion efficiencies.

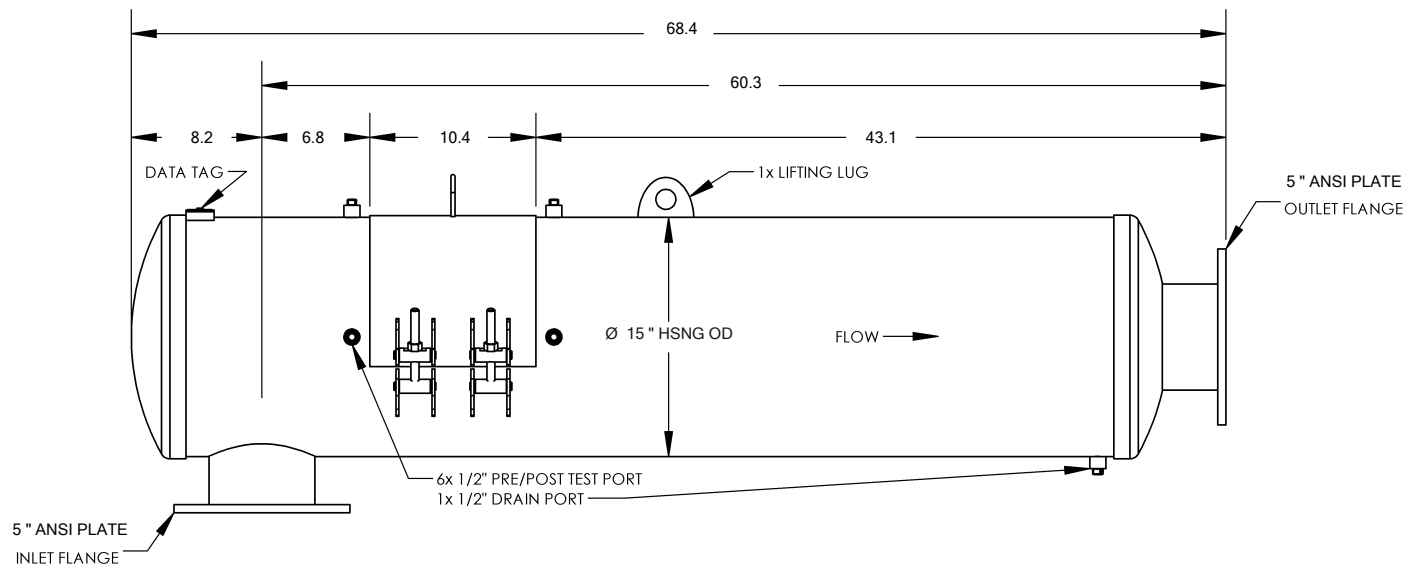
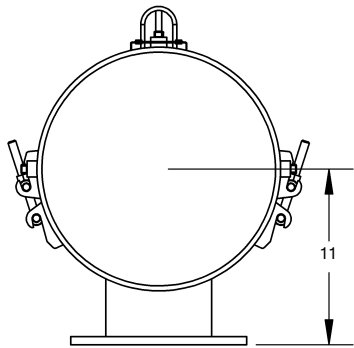
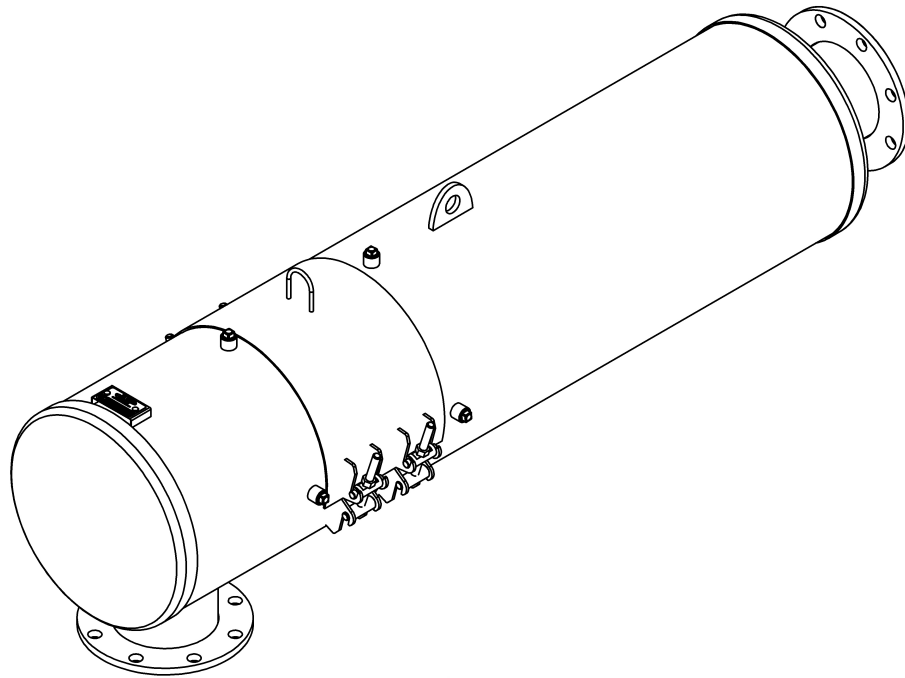
Engine lubrication oil shall contain less than 0.5 wt% Sulfated Ash with a maximum allowable specific oil consumption of 0.7 g/bhp-hr. The catalyst shall be limited to a maximum ash loading of 0.022 lb/ft³. Phosphorous and zinc additives are limited to 0.03 wt%. New or Reconstructed engines must operate for a minimum of 100 hours prior to catalyst installation, otherwise the warranty is void.

The catalyst must not be exposed to the following know poisoning agents, including: antimony, arsenic, chromium, copper, iron, lead, lithium, magnesium, mercury, nickel, phosphorous, potassium, silicon, sodium, sulfur, tin, and zinc. Total poison concentrations in the fuel gas must be limited to 0.25 ppm or less for catalyst to function properly.

Shipment - Promised shipping dates are approximate lead times from the point of manufacture and are not guaranteed. EMIT Technologies, Inc. will not be liable for any loss, damage or delay in manufacture or delivery resulting from any cause beyond its control including, but not limited to a period equal to the time lost by reason of that delay. All products will be crated as per best practice to prevent any damage during shipment. Unless otherwise specified, Buyer will pay for any special packing and shipping requirements. Acceptance of goods by common carrier constitutes delivery to Buyer. EMIT Technologies, Inc. shall not be responsible for goods damaged or lost in transit.

Terms: Credit is extended to purchaser for net 30 time period. If payment is not received in the net 30 timeframe, interest on the unpaid balance will accrue at a rate of 1.5% per month from the invoice date.


Order Cancellation Terms: Upon cancellation of an order once submittal of a Purchase Order has occurred, the customer will pay a 25% restocking fee for Catalyst Housings, Catalyst Elements, and Air/Fuel Ratio Controllers; 50% restocking fee for Cooler Top Solutions, Exhaust System Accessories, and other Custom Built Products; 100% of all associated shipping costs incurred by EMIT; 100% of all project expenses incurred by EMIT for Field Services.



NOTES
 14.5 IN. CATALYST HOUSING,
 CRITICAL GRADE SILENCER, 5 & 5 IN.
 FLANGES.
 DIMENSIONS NOT TO SCALE

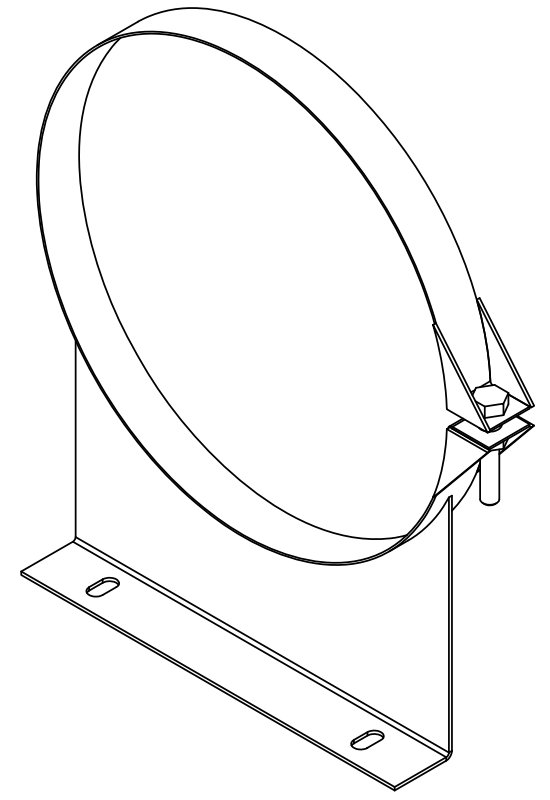
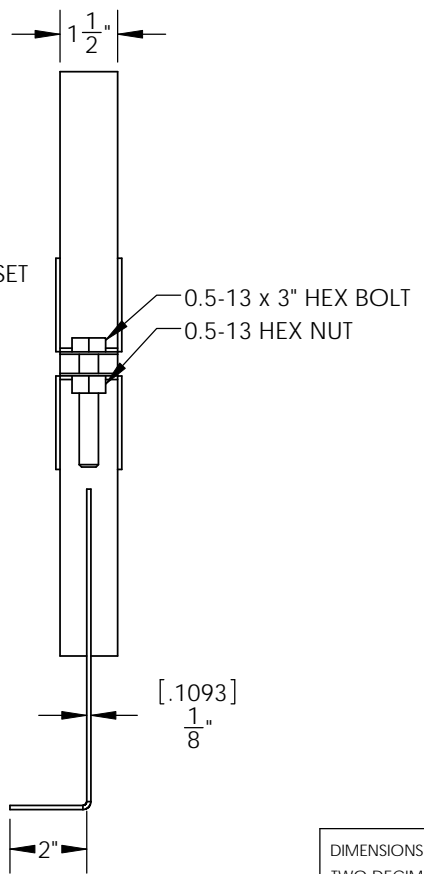
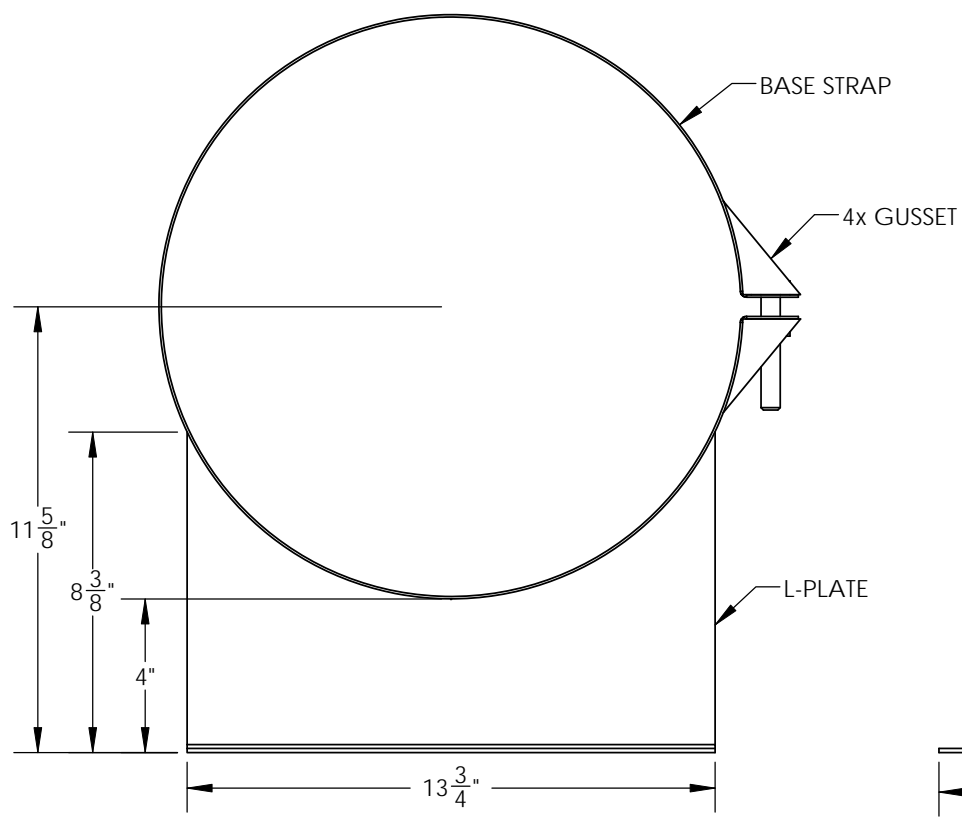
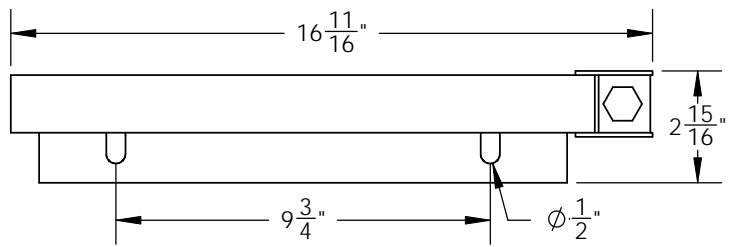
| | | | |
|-------------|-----|-------------|--------------------------|
| CASE NUMBER | EJN | CUSTOMER | DO NOT SCALE DRAWING |
| CHM | | ENGINE | DIMENSIONS ARE IN INCHES |
| | | COOLER | TWO DECIMAL ± |
| | | LOCATION | THREE DECIMAL ± |
| | | SITE NAME | MATERIAL |
| | | UNIT NUMBER | STAINLESS STEEL |
| | | | DRAWN BY |
| | | | CHECKED BY |
| | | | DATE |

PROPRIETARY AND CONFIDENTIAL
 THIS DRAWING AND SPECIFICATIONS ARE
 THE PROPERTY OF EMIT TECHNOLOGIES
 AND SHALL NOT BE REPRODUCED,
 DISTRIBUTED, DISCLOSED OR USED FOR
 MANUFACTURE OR SALE WITHOUT THE
 PERMISSION OF EMIT TECHNOLOGIES.



P.O. Box 6785 Ph. 307-673-0883
 Sheridan, WY 82801 Fax 307-675-5977

| | |
|---------------------|----------|
| DESCRIPTION: | |
| EAS-1450-0505F-2S4E | |
| SIZE | ITEM NO. |
| A | |
| SCALE: 1:X | WEIGHT: |
| SHEET 1 OF 1 | |



DIMENSIONS ARE IN INCHES
 TWO DECIMAL ± --
 THREE DECIMAL ± --

MATERIAL
 Stainless Steel

DRAWN BY
 MWJ

CHECKED BY

DATE

EMIT
 TECHNOLOGIES
 P.O. Box 6785 Sheridan, WY, 82801
 Ph. 307-673-0883 Fax 307-675-5977

DESCRIPTION:
 14.5 in. Wrap-Around Bracket

| | | |
|----------|------------|------|
| SIZE | PART. NO. | REV. |
| A | 68300-1450 | |

| | | |
|------------|----------------|--------------|
| SCALE: 1:5 | WEIGHT: 5 lbs. | SHEET 1 OF 5 |
|------------|----------------|--------------|

PROPRIETARY AND CONFIDENTIAL
 THIS DRAWING AND SPECIFICATIONS ARE THE PROPERTY OF EMIT TECHNOLOGIES AND SHALL NOT BE REPRODUCED, DISTRIBUTED, DISCLOSED OR USED FOR MANUFACTURE OR SALE WITHOUT THE PERMISSION OF EMIT TECHNOLOGIES.