



Wheeler - PSD
 4901 West 2100 South
 Salt Lake City , UT
 84120
 801-978-1581

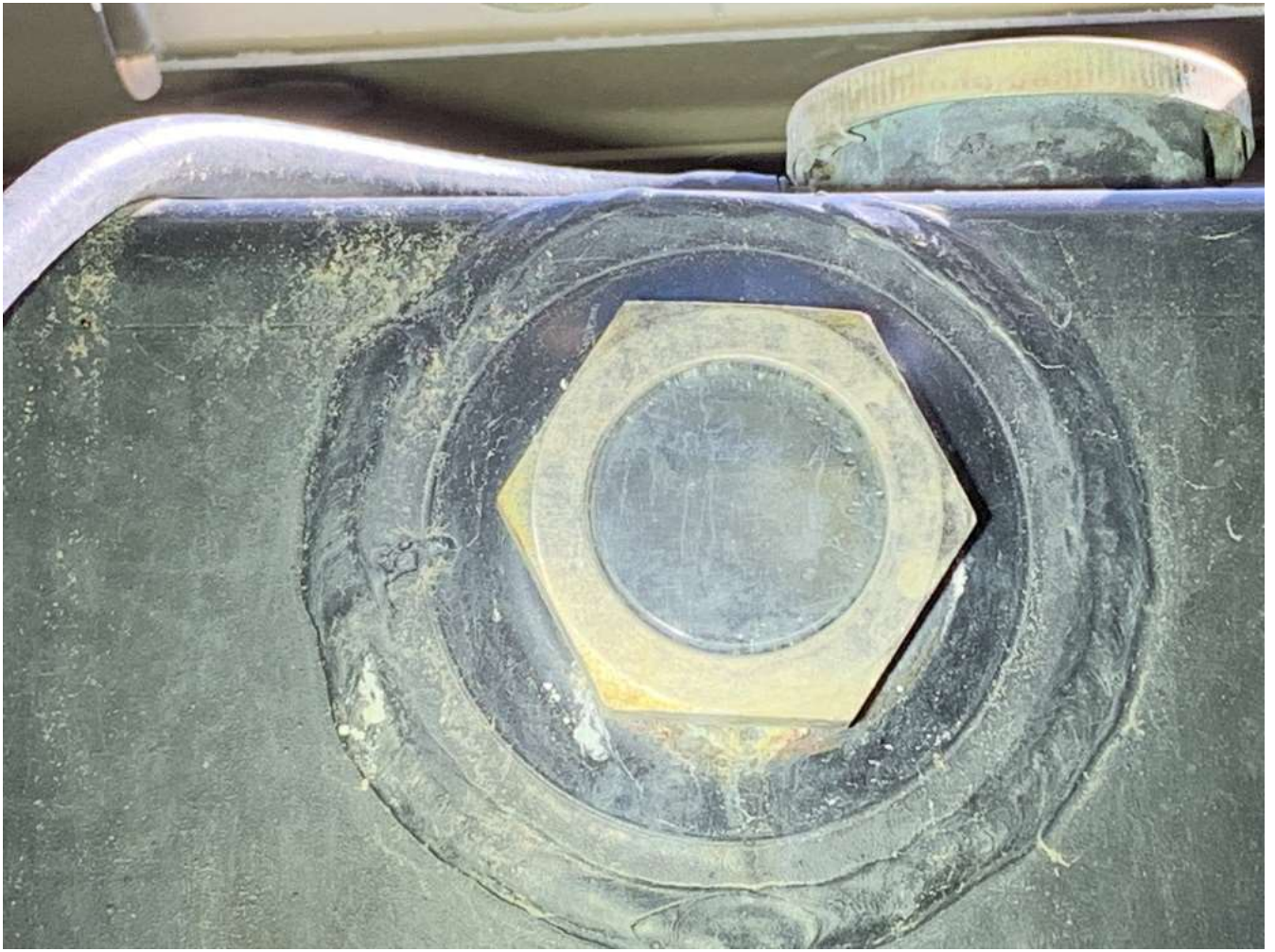
PSD INSPECTION SHEET 2

Sep 06, 2019

WO #	PS90250	Customer	Hyrum City Corporation
Equip	Contact	Matt Draper
Serial #	G000131899	Phone	435-851-0600
Equipment ID			
Advisor	Paige Harker		
Phone	801-978-1528		

<p>Needs Immediate Attention</p> <ul style="list-style-type: none"> • Radiator and Cooling System - Check for Coolant Leaks Inspected • Radiator and Cooling System - Check Upper Coolant Heater Hose Inspected • Engine, Intake, Exhaust & Fuel System - Check Flexible Fuel Lines Inspected • Engine, Intake, Exhaust & Fuel System - Check Air Cleaner Elements Inspected • Engine, Intake, Exhaust & Fuel System - Check Air Cleaner Indicator Inspected • Engine, Intake, Exhaust & Fuel System - Check for Fuel Leaks Inspected • Operating Checks - Recheck for Coolant Leaks W/Running Inspected 	<p>Needs Attention</p> <ul style="list-style-type: none"> • Radiator and Cooling System - Check Coolant Level Inspected 	<p>Photos / Video</p> <ul style="list-style-type: none"> • Radiator and Cooling System - Check Coolant Level Inspected • Radiator and Cooling System - Check Coolant Inhibitors Inspected • Radiator and Cooling System - Check for Coolant Leaks Inspected • Engine, Intake, Exhaust & Fuel System - Check Flexible Fuel Lines Inspected • Engine, Intake, Exhaust & Fuel System - Check Air Cleaner Elements Inspected • Engine, Intake, Exhaust & Fuel System - Check Air Cleaner Indicator Inspected • Engine, Intake, Exhaust & Fuel System - Check for Fuel Leaks Inspected • Final Inspection - Verify Circuit Breaker is Closed Inspected • Verify Unit Hours - Verify Unit Hours
--	---	---

Radiator and Cooling System	
<p>Check Coolant Level</p> <p><i>Coolant level is low, but above the LCL sensor.</i></p> <p> Photo(s) attached</p>	SUGGESTED



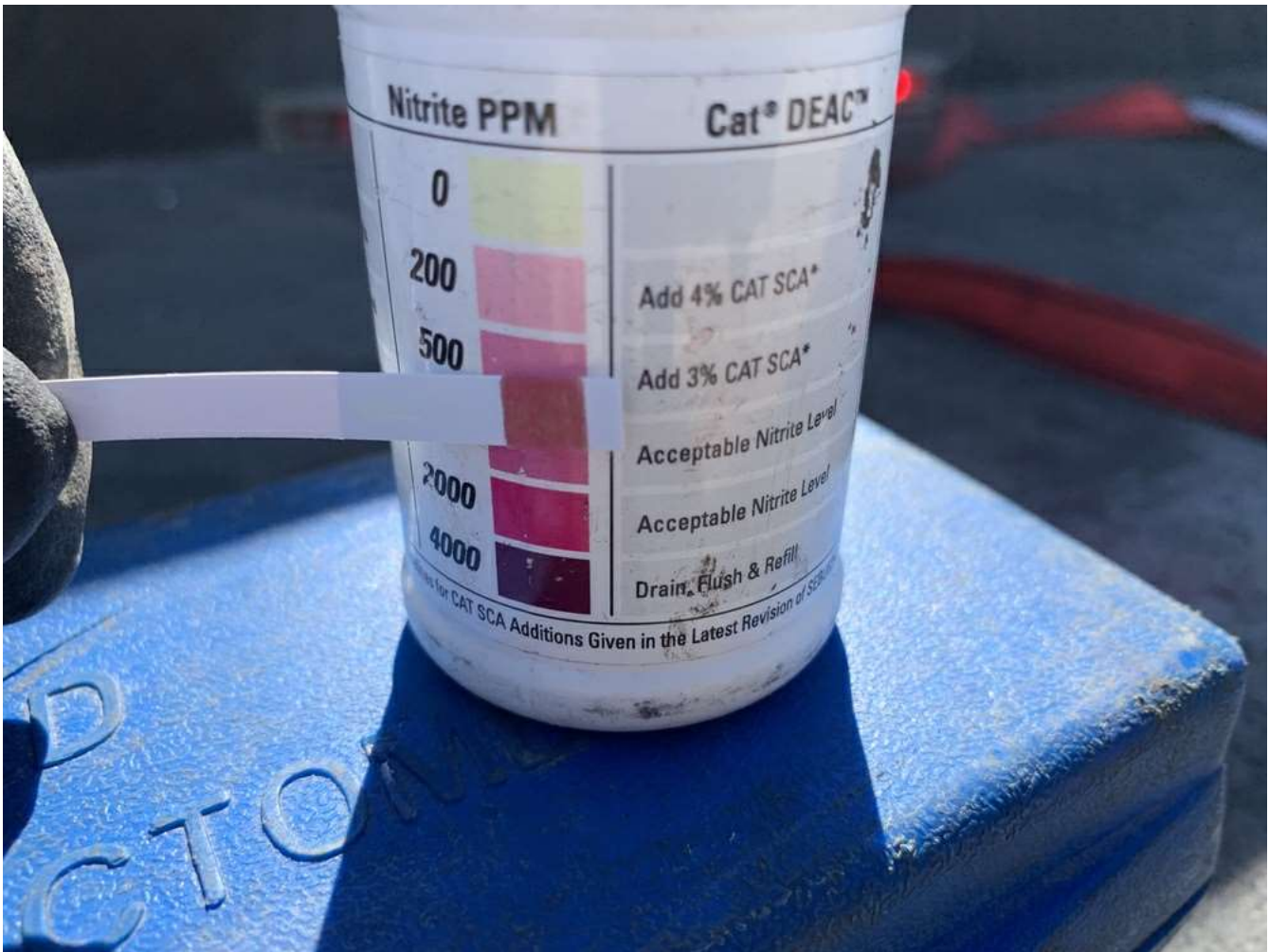
Check Antifreeze Protection Level

 INSPECTED

Check Coolant Inhibitors

 Photo(s) attached

 INSPECTED




Check Radiator Cap and Seat

 INSPECTED

Check for Coolant Leaks

Coolant leaks from left upper block heater hose while running.

 **Photo(s)** attached

 NEEDED



Check Radiator Core for Obstructions	☑ INSPECTED
Check Jacket Water Heaters <i>Block heater hoses are not connected to power.</i>	☑ INSPECTED
Check Upper Radiator Hose	☑ INSPECTED
Check Lower Radiator Hose	☑ INSPECTED
Check Upper Coolant Heater Hose <i>Left upper heater hose leaks while running.</i>	✘ NEEDED
Check Lower Coolant Heater Hose / Clamp	☑ INSPECTED
Coolant Sample	☑ INSPECTED

Engine, Intake, Exhaust & Fuel System

Check Belts

✔ INSPECTED

Check Lube Oil Level


✔ INSPECTED

Check Flexible Coolant Connections

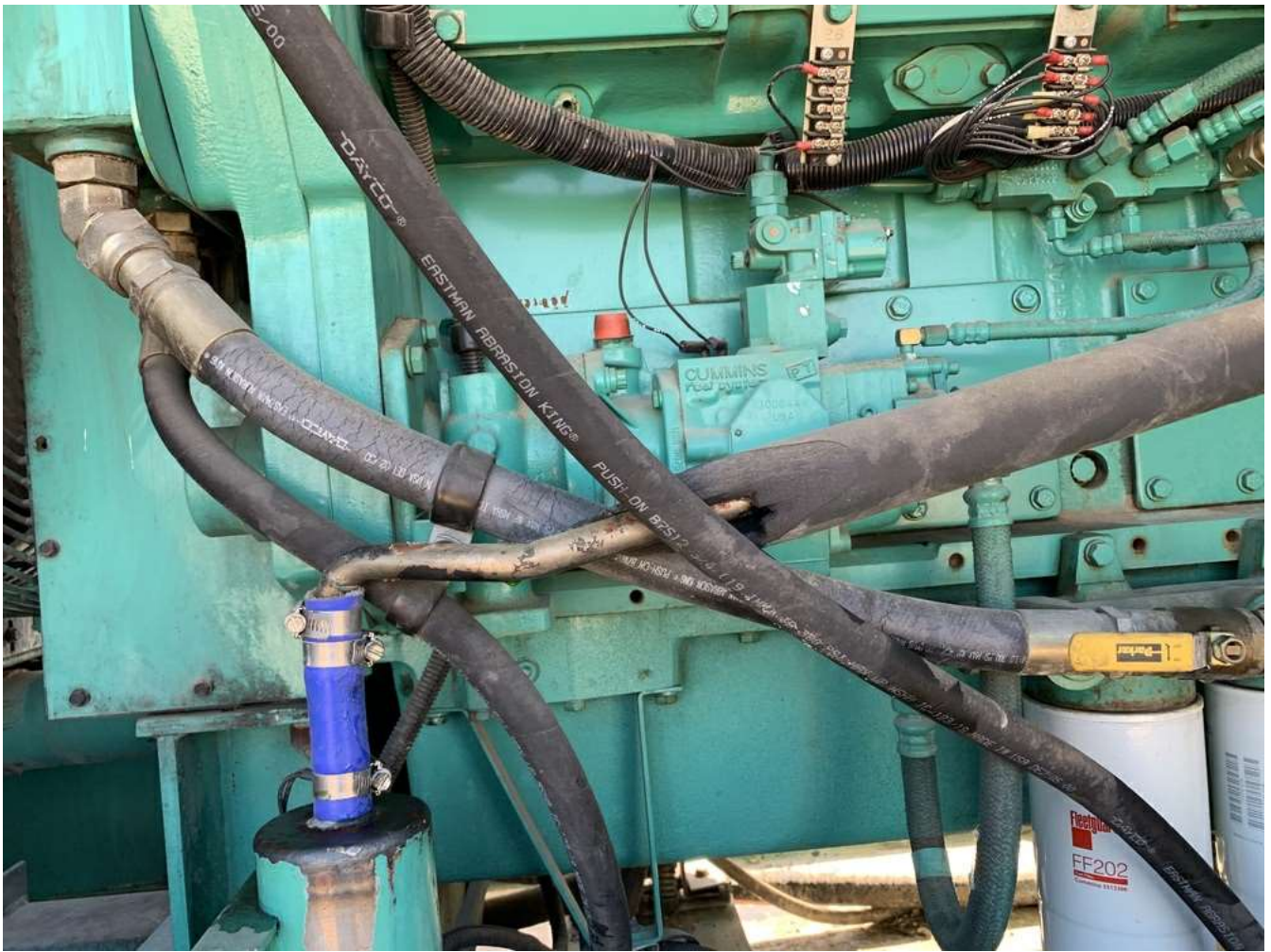
✔ INSPECTED

Check Flexible Fuel Lines

Fuel supply line to filter head is cracked. Recommend replacement.

 Photo(s) attached

✘ NEEDED





Check Air Cleaner Elements

Recommend replacing air filters.

 **Photo(s)** attached

✕ NEEDED







Check Air Cleaner Seal

Check Air Cleaner Indicator

00 Photo(s) attached

INSPECTED

NEEDED



Check for Fuel Leaks

Fuel leaks from left side of engine when load gets to 50%.

Video(s) viewable at <https://mdsnotify.com/r/td201352>

Photo(s) attached

✘ NEEDED



Check for Oil Leaks	✔ INSPECTED
Clean Crankcase Vent / Breather	✔ INSPECTED
Check Turbo End Play & Leaks	✔ INSPECTED
Check Flexible Exhaust Connection	✔ INSPECTED
Check Block Heater (Visual)	✔ INSPECTED
Oil Sample	✔ INSPECTED
Generator, Batteries & Controls	
Check Air Gap on Generator	✔ INSPECTED
Check Insulation on Generator Leads	✔ INSPECTED
Check for Dirt or Build Up on Generator	✔ INSPECTED
Check Cranking Termination	✔ INSPECTED
Check Battery Connections	✔ INSPECTED
Tighten Loose Terminals	✔ INSPECTED
Check Loose Relays on Control System	✔ INSPECTED
Check Voltage Regulator	✔ INSPECTED
Battery #1	
CCA's	✔ INSPECTED
Age <i>Batteries replaced during inspection.</i>	✔ INSPECTED
Check Battery Voltage	✔ INSPECTED
Operating Checks	
Battery Voltage Dip	✔ INSPECTED
Recheck for Coolant Leaks W/Running	✘ NEEDED
Check Engine Instrumentation	✔ INSPECTED
Check for Abnormal Noise or Vibration	✔ INSPECTED
Check for Excessive Crankcase Blowby	✔ INSPECTED
Adjust Governor Control	✔ INSPECTED
Overcrank Test	✔ INSPECTED
Test Safety / Shutdown / Panel Pre Alarms	✔ INSPECTED
Place All Switches in Proper Mode <i>Switch left in off position.</i>	✔ INSPECTED
Walk around Inspection of Installation	✔ INSPECTED
Check for IO Sec On-Line Capability	✔ INSPECTED
Fuel Tank	
Fuel Tank Level	✔ INSPECTED
Fuel Clarity Test	✔ INSPECTED

Fuel Sample

INSPECTED

Final Inspection

Verify Engine Control Is in Auto

Left unit in off position.

INSPECTED

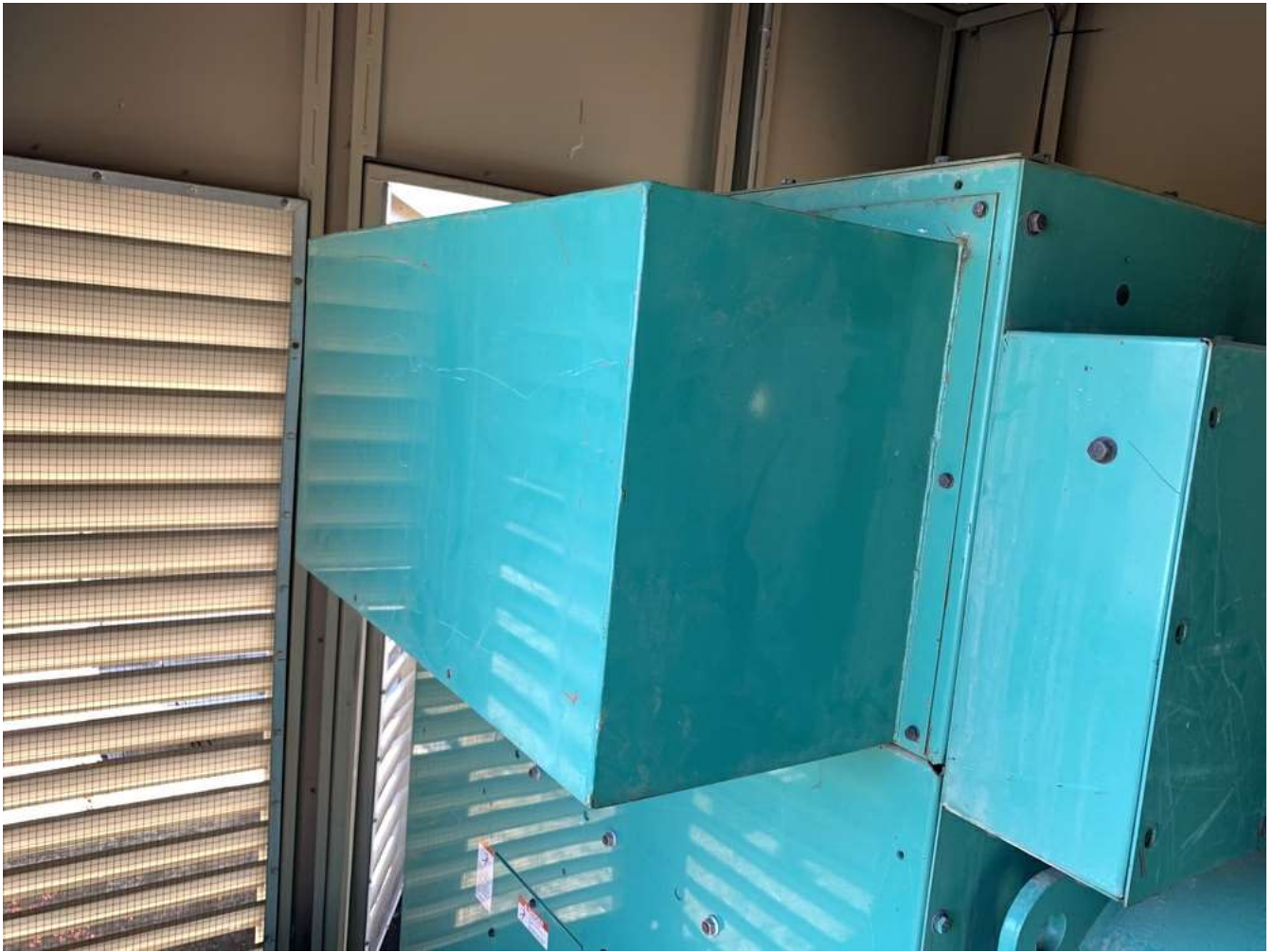
Verify Circuit Breaker is Closed





Generator does not have a breaker hooked up.

INSPECTED

 **Photo(s)** attached





Verify Voltage Regulator is On	 INSPECTED
Verify Battery Charger is On <i>Battery charger is not connected.</i>	 INSPECTED
Verify Jacket Water Heater is On <i>Block heaters are disconnected.</i>	 INSPECTED
Double Check Starter "S" Terminal	 INSPECTED

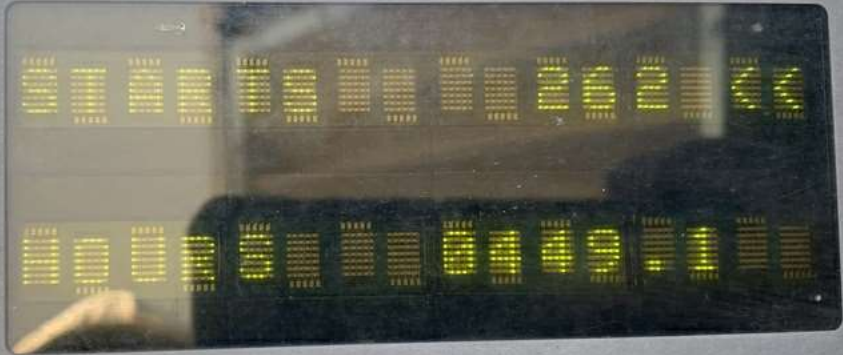
Verify Unit Hours

Verify Unit Hours

449.1

 **Photo(s)** attached

ontrol



Reset

Menu

Panel Lights

