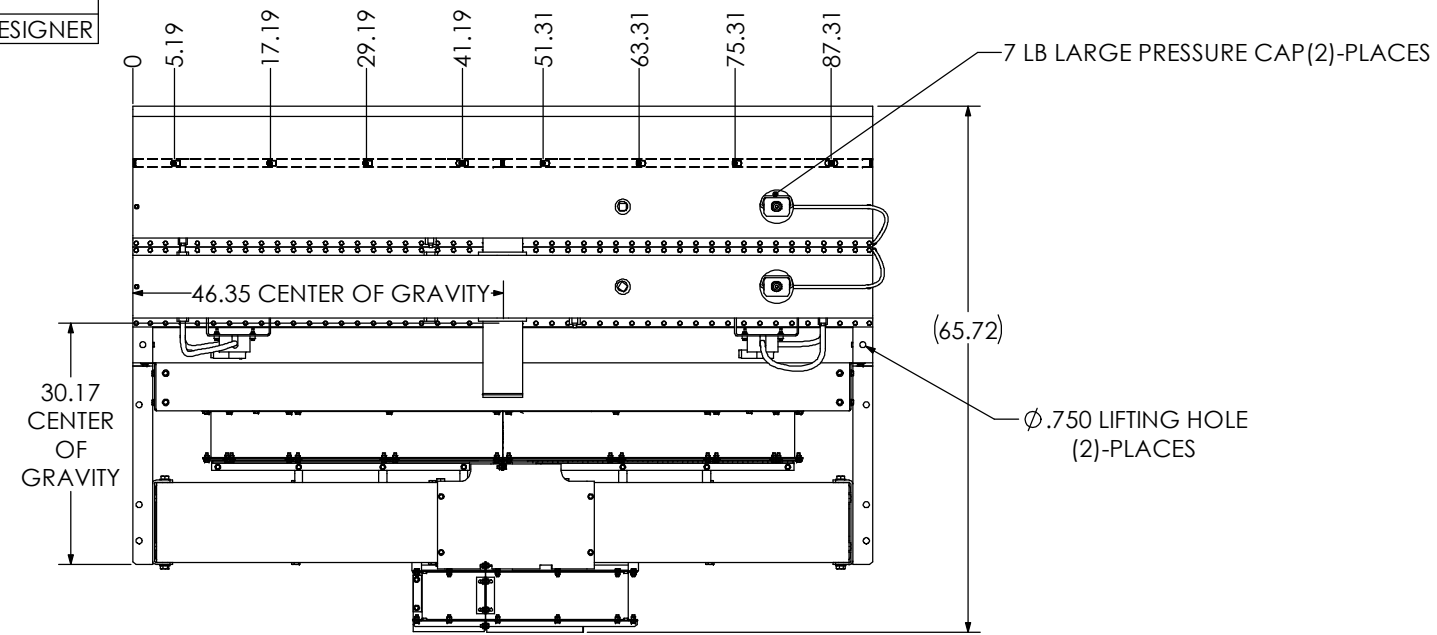


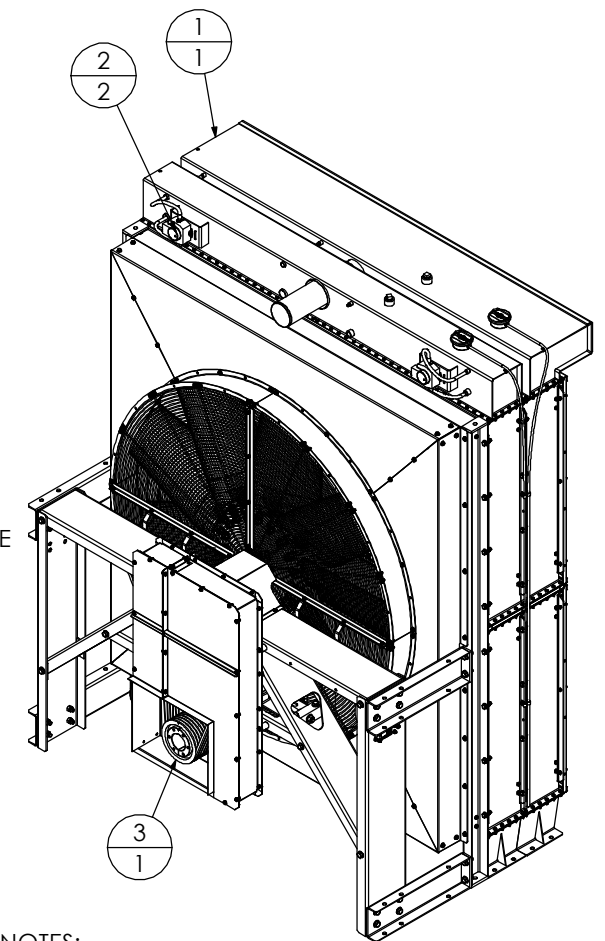
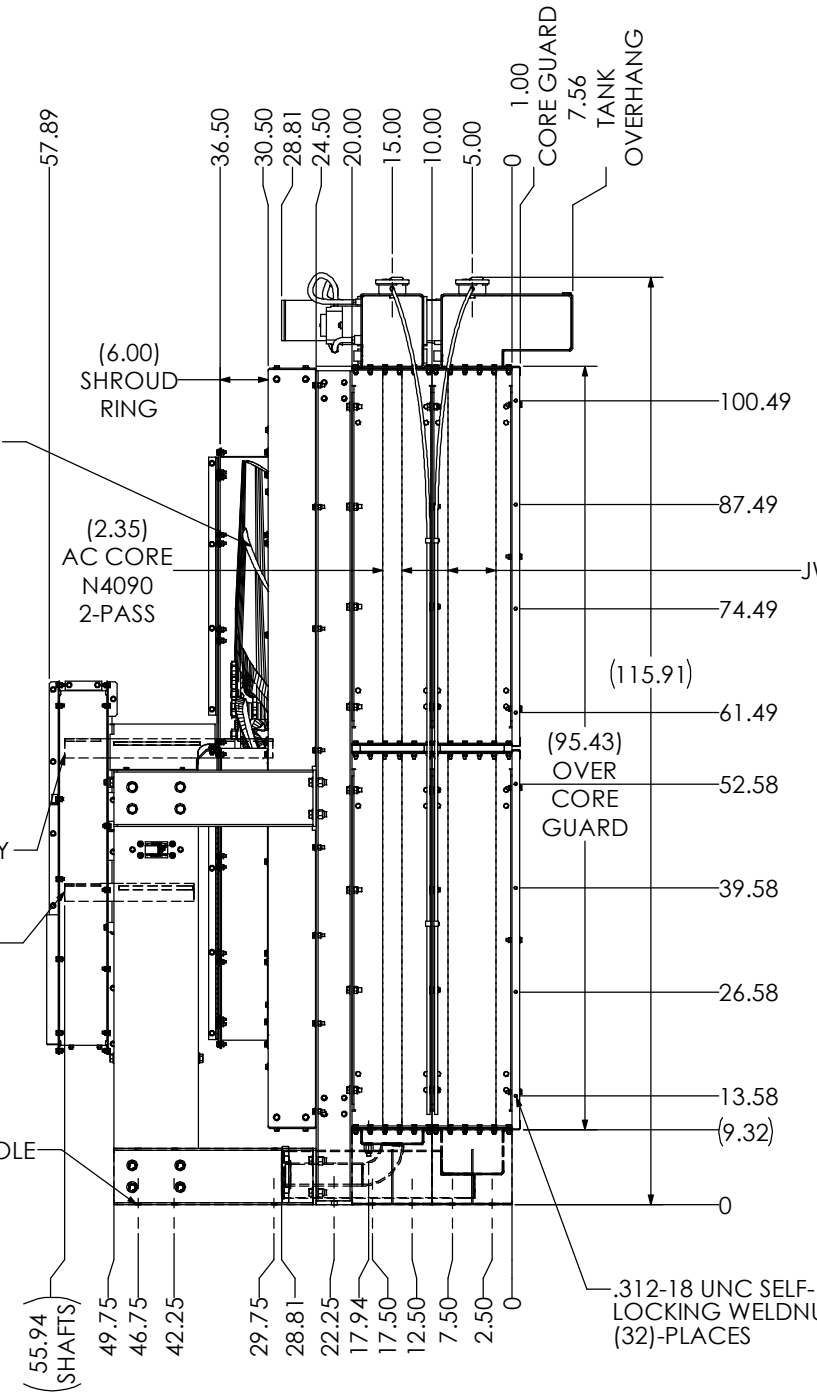
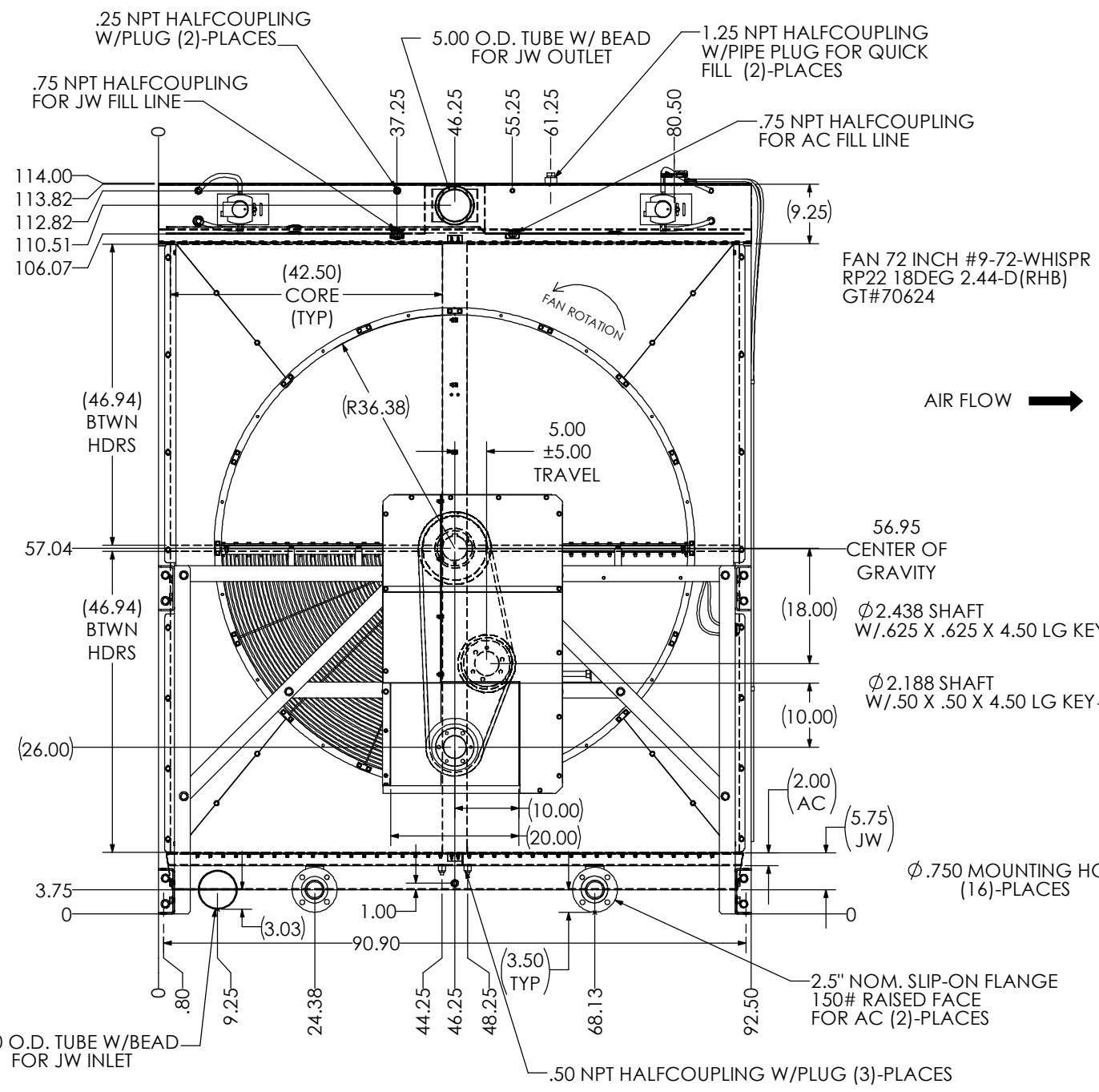
REVISIONS			
REV.	ECN #	DATE	DESIGNER

ITEM NO.	PART NO.	DESCRIPTION	QTY.
1	5592	BOLTED LG RAD ASSY (B)	1
2	2890B-LSG	LEVEL SWITCH GAGE	2
SHIP LOOSE ITEM			
3	5592-DK	DRIVE KIT (F55 954 RPM)	1



DRIVE KIT INFORMATION
 ENGINE RPM: 1200
 FAN RPM: 954
 FAN POWER DRAW
 88.9 HP @STD
 79.7 HP @DESIGN

2890B/LSG NOTES:
 FLOAT OPERATED LEVEL GAUGE W/ SPDT SWITCH
 RATED: 10A @125 VAC
 .05A @125 VDC
 10A @ 30 VDC



- NOTES:
- 55 SQ. FT. F-SERIES.
 - DRIVE KITS SHOWN FOR REFERENCE ONLY, TO BE SHIPPED LOOSE.
 - ESTIMATED RJ CAPACITY = 69.90 GAL. W/ 15.95 GAL OF EXPANSION.
 - ESTIMATED RA CAPACITY = 36.09 GAL. W/ 7.44 GAL OF EXPANSION.

COATING: BLACK (B)
 ESTIMATED UNIT DRY WEIGHT = 4444 LBS.

GENERAL TOLERANCE		STANDARD TOLERANCE		CUSTOMER REF.	
SUPERCEDE STANDARD TOLERANCES AND ARE:		UNLESS OTHERWISE SPECIFIED ARE:		CUSTOMER REF.	
MTG FEATURE SIZE	+/- .03	2 PLACE DIMENSIONS:	+/- .19	CUSTOMER:	EPG
MTG LOCATION	+/- .13	3 PLACE DIMENSIONS:	+/- .063	CUSTOMER NUMBER:	F55-48-1P/JW-2PAC-AS
MTG HOLE LOCATION CTR-CTR	+/- .08	ALL DIMENSIONS SHOWN ARE IN INCHES		DRAWING NO.:	5592-AS
CONNECTION SIZE	+/- .03	ALL ANGLED DIMENSIONS ARE REFERENCE		ISSUE NO.:	P-03
CONNECTION LOCATION	+/- .25			DESCRIPTION:	BOLTED LG RAD ASSY (B)
CONNECTION LCTN CTR-CTR	+/- .13	THIRD ANGLE PROJECTION		SCALE:	1:12
				DATE:	1/6/2013
				DESIGNED BY:	WC
				REVIEWED BY:	WC
				SHEET:	1 of 1.0
				CHK'D:	
				DATE:	

THIS PRINT IS PROPERTY OF COVRAD GT AND/OR ITS SUBSIDIARIES AND MUST NOT BE USED IN ANY MANNER DETRIMENTAL TO THEIR INTERESTS

PART NO. 5592/AS